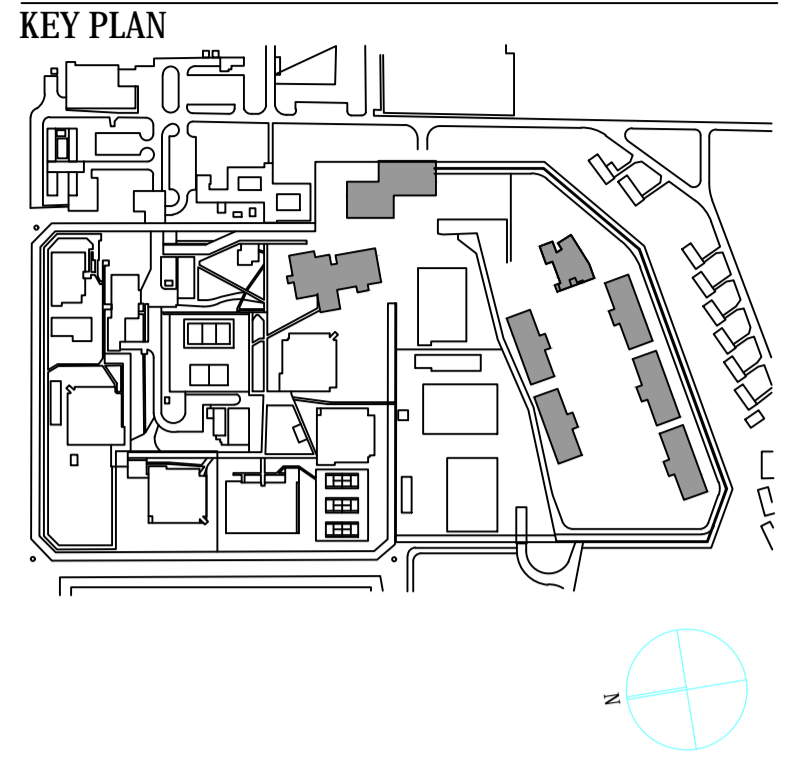


**GENERAL NOTES**  
 1. VERIFY ALL DIMENSIONS AND LEVELS ON SITE BY SURVEY CHECK PRIOR TO ORDERING OR CONSTRUCTION. DO NOT SCALE DRAWINGS.  
 2. DRAWINGS SHALL NOT BE USED FOR CONSTRUCTION PURPOSES UNTIL ISSUED FOR CONSTRUCTION.



**REVISIONS**

REV.	DESCRIPTION	DATE	CHK
1	PRELIMINARY TENDER ISSUE	06/07/2018	MC

**PRELIMINARY**

CLIENT NSW JUSTICE INFRASTRUCTURE & ASSETS  
 LEVEL 2, 50 PHILLIP STREET, SYDNEY NSW 2000  
 D&C SUB-CONTRACTOR LENDLEASE  
 EXCHANGE PL. 300 BARANGAROO AVE, SYDNEY 2000, ph (02) 9236 6111  
 ARCHITECT GUYMER BAILEY ARCHITECTS  
 19 TERRACE STREET, TOOWONG QLD 4066, ph (07) 3870 9700  
 LANDSCAPE ARCHITECT GUYMER BAILEY ARCHITECTS  
 19 TERRACE STREET, TOOWONG QLD 4066, ph (07) 3870 9700  
 STRUCTURAL / CIVIL NORTHROP CONSULTING ENGINEERS Pty Ltd  
 LEVEL 11, 345 GEORGE STREET, SYDNEY NSW 2000, ph (02) 9241 4188  
 SERVICES JHA  
 LEVEL 23, 101 MILLER ST, NTH SYDNEY NSW 2060, ph (02) 9437 1000  
 SECURITY / COMMS SECURITY CONSULTING GROUP  
 LEVEL 8, 66 GOULBURN STREET, SYDNEY NSW 2000, ph (02) 8599 7550

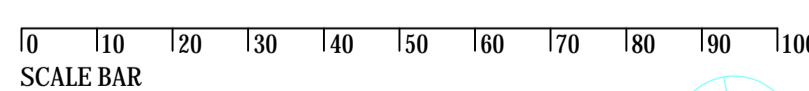


Sydney  
 Level 11 345 George Street, Sydney NSW 2000  
 Ph (02) 9241 4188 Fax (02) 9241 4324  
 Email sydney@northrop.com.au ABN 81 094 433 100



PROJECT  
**CESSENOCK CORRECTIONAL CENTRE EXPANSION.**  
 LINDSAY STREET, CESSENOCK, NSW 2325

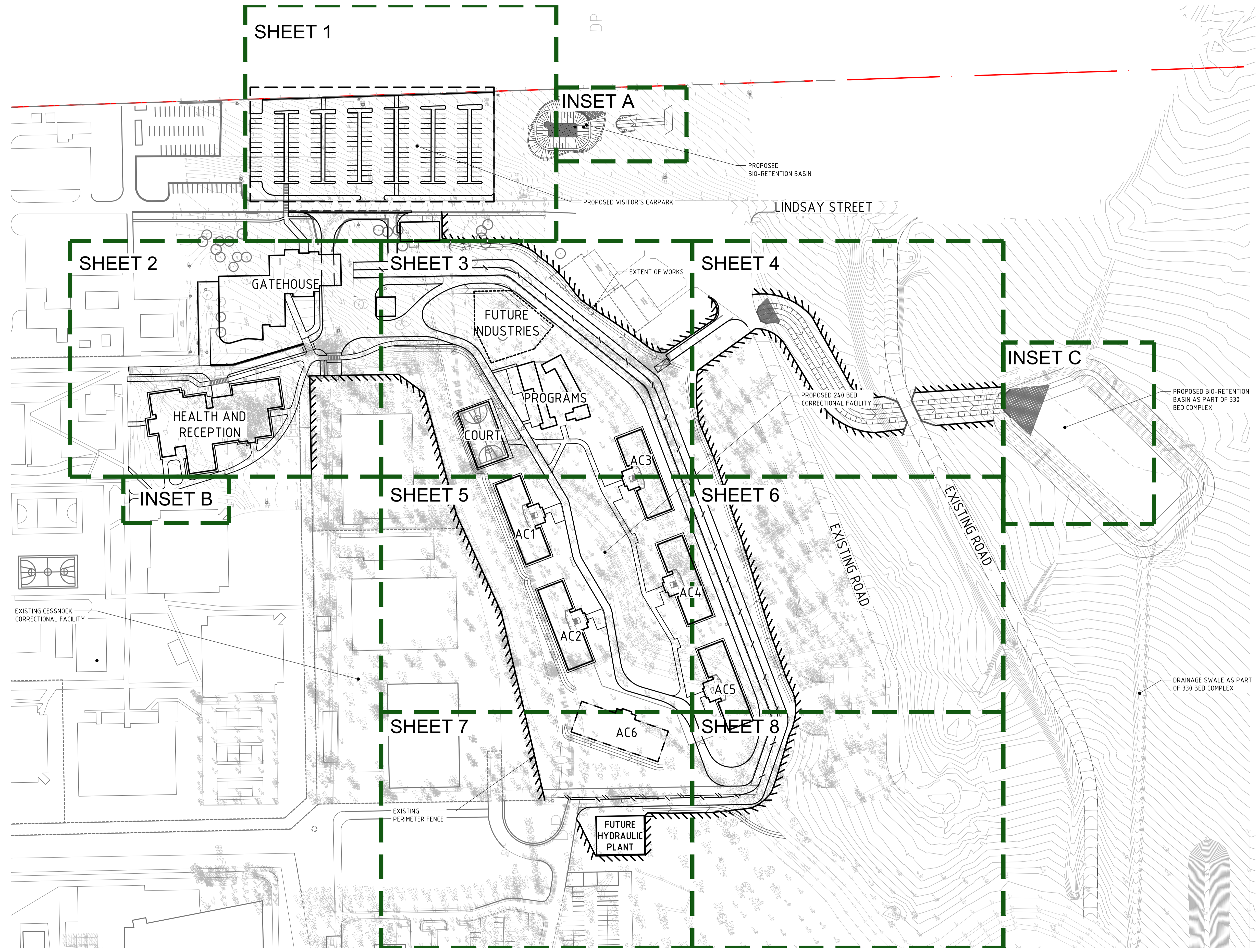
DRAWING TITLE  
**GENERAL ARRANGEMENT PLAN**



SCALE 1:1000 @ A1

DATE	DRAWN	CHECKED	APPROVED
06.07.18	UM	MC	AD
PROJECT No.	DRAWING No.	STAGE	REV
180594	CV-AA-54.01		1

PRINT DATE: 06/07/18  
 PLOT DATE: 06/07/18  
 PLOT TIME: 10:09:30 AM  
 PLOT SCALE: 1:1000  
 PLOT SHEET: 01  
 PLOT TOTAL SHEETS: 08  
 PLOT FILE: C:\Users\umc\Documents\CV-AA-54\CV-AA-54-01.dwg



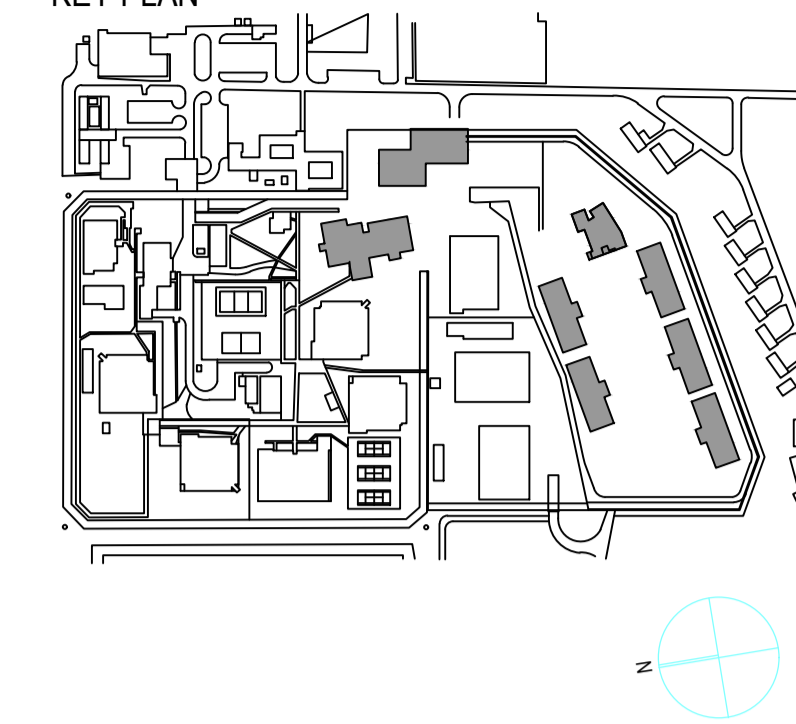
EXISTING CESSNOCK CORRECTIONAL FACILITY

DRAINAGE SWALE AS PART OF 330 BED COMPLEX

FUTURE HYDRAULIC PLANT

**GENERAL NOTES**  
 1. VERIFY ALL DIMENSIONS AND LEVELS ON SITE BY SURVEY CHECK PRIOR TO ORDERING OR CONSTRUCTION. DO NOT SCALE DRAWINGS.  
 2. DRAWINGS SHALL NOT BE USED FOR CONSTRUCTION PURPOSES UNTIL ISSUED FOR CONSTRUCTION.

**KEY PLAN**

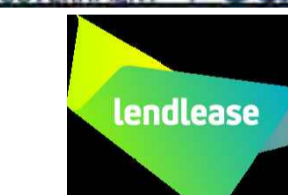


**REVISIONS**

REV.	DESCRIPTION	DATE	CHK
1	PRELIMINARY TENDER ISSUE	08/07/2018	MC
2	ISSUED FOR TENDER	13/07/2018	MC

**PRELIMINARY**

CLIENT: NSW JUSTICE INFRASTRUCTURE & ASSETS  
 LEVEL 2, 50 PHILLIP STREET, SYDNEY NSW 2000  
 D&C SUB-CONTRACTOR: LENDLEASE  
 EXCHANGE PL, 300 BARANGAROO AVE, SYDNEY 2000, ph (02) 9236 6111  
 ARCHITECT: GUYMER BAILEY ARCHITECTS  
 19 TERRACE STREET, TOOWONG QLD 4066, ph (07) 3870 9700  
 LANDSCAPE ARCHITECT: GUYMER BAILEY ARCHITECTS  
 19 TERRACE STREET, TOOWONG QLD 4066, ph (07) 3870 9700  
 STRUCTURAL / CIVIL: NORTHROP CONSULTING ENGINEERS Pty Ltd  
 LEVEL 11, 345 GEORGE STREET, SYDNEY NSW 2000, ph (02) 9241 4188  
 SERVICES: JHA  
 LEVEL 23, 101 MILLER ST, NTH SYDNEY NSW 2060, ph (02) 9437 1000  
 SECURITY / COMMS: SECURITY CONSULTING GROUP  
 LEVEL 8, 66 GOULBURN STREET, SYDNEY NSW 2000, ph (02) 8599 7550

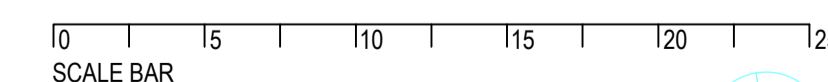


Sydney  
 Level 11 345 George Street, Sydney NSW 2000  
 Ph (02) 9241 4188 Fax (02) 9241 4324  
 Email: sydneynorthrop.com.au ABN 81 094 433 100



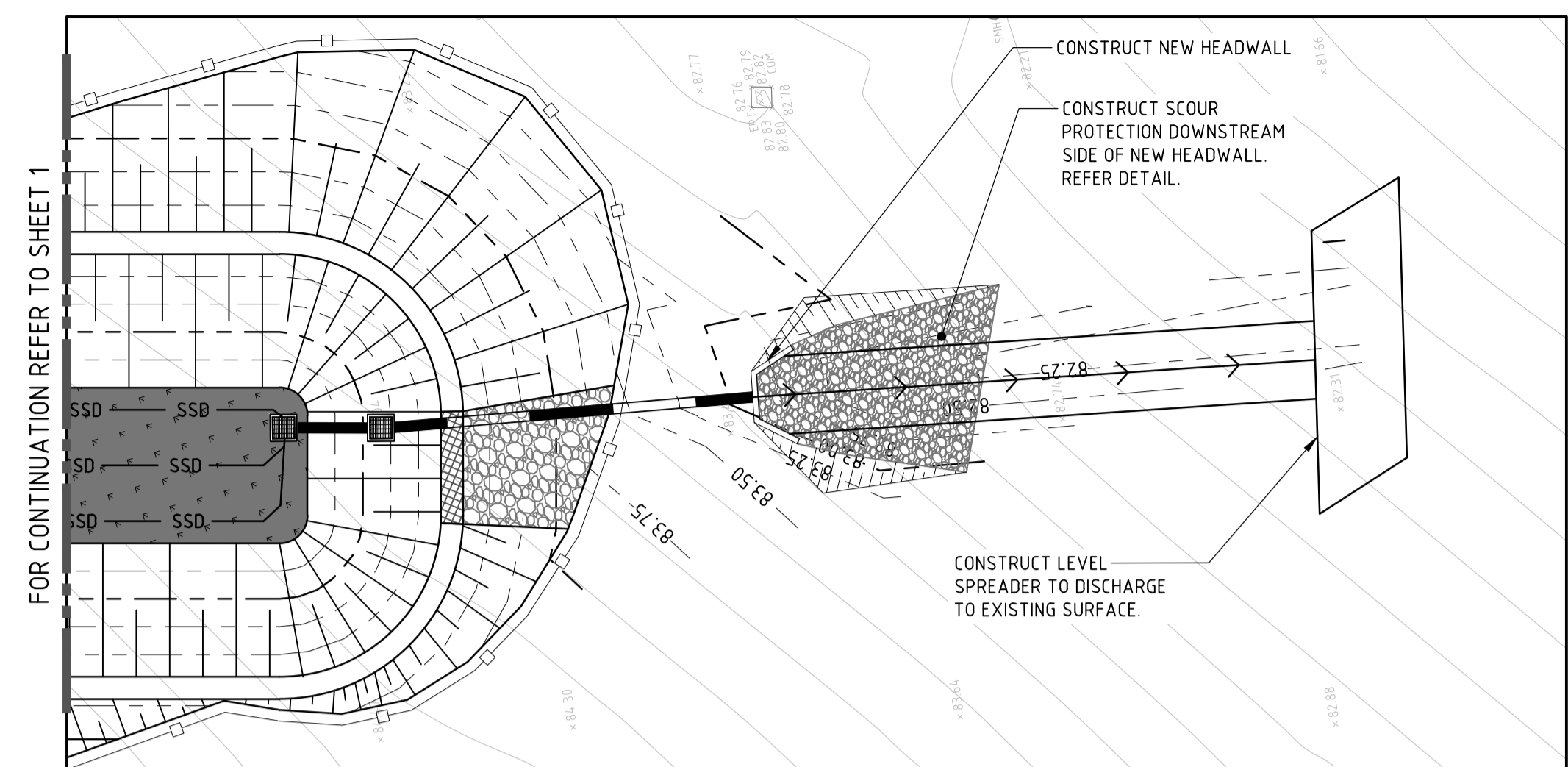
PROJECT  
**CESSNOCK CORRECTIONAL CENTRE EXPANSION.**  
 LINDSAY STREET, CESSNOCK, NSW 2325

DRAWING TITLE  
**SITWORKS AND STORMWATER MANAGEMENT PLAN - SHEET 1**



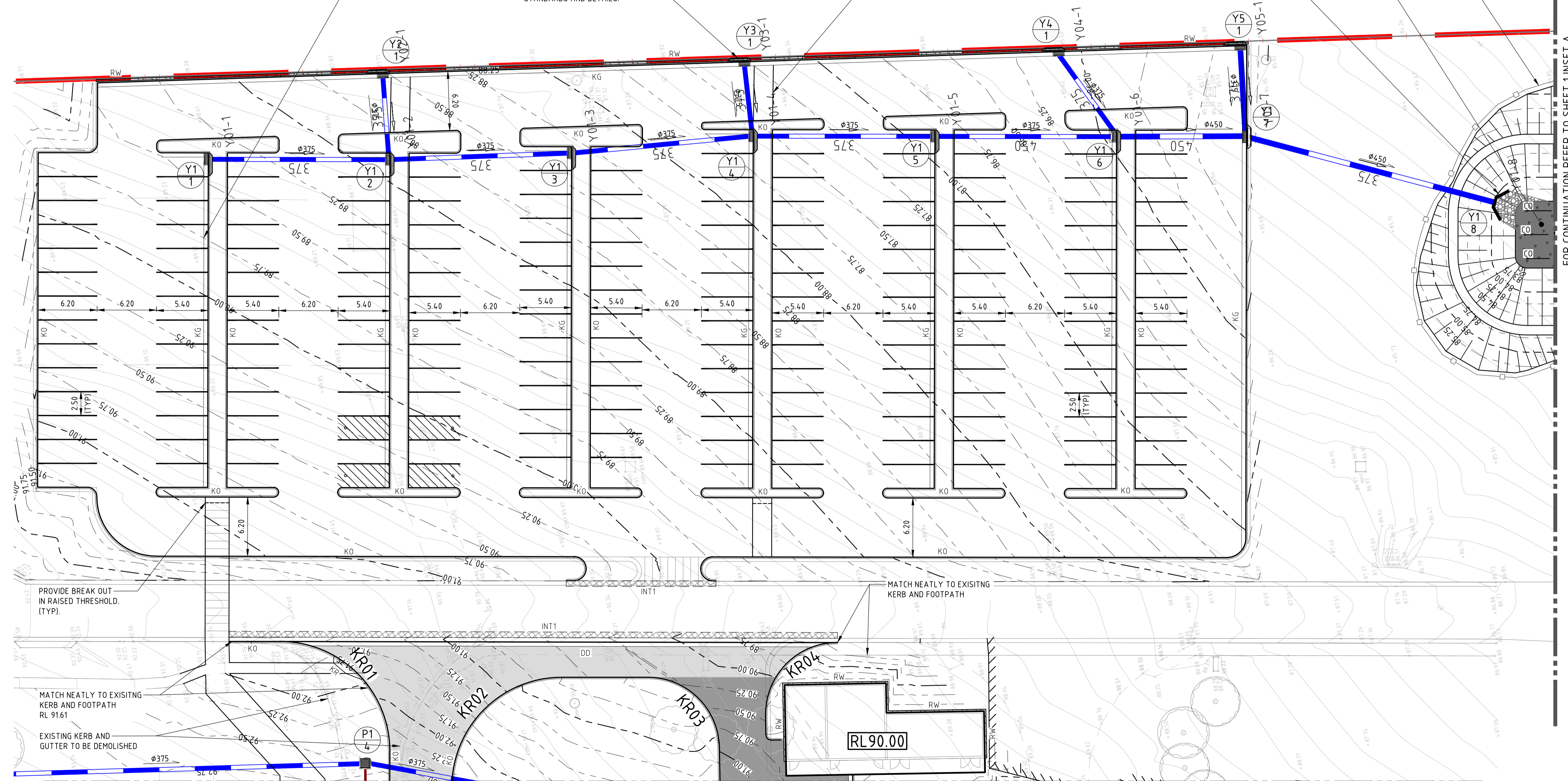
SCALE		PROJECT NORTH	
1:250 @ A1			
DATE	DRAWN	CHECKED	APPROVED
13.07.18	UM	MC	AD
PROJECT No.	DRAWING No.	STAGE	REV
180594	CV-AA-60.01		2

PRINT DATE: 13.07.18  
 PREPARED: P:\019\Sub\180594 - Cessnock Correctional Centre - Level 2\02\Site\DWG\Site\DWG\CES-CV-AA-60.01.PDS\0204.PDS\01.dwg



**INSET A**

CONSTRUCT KERB AND GUTTER (KG) IN ACCORDANCE WITH COUNCIL'S STANDARDS AND DETAILS.  
 CONSTRUCT KERB INLET PIT IN ACCORDANCE WITH COUNCIL'S STANDARDS AND DETAILS.

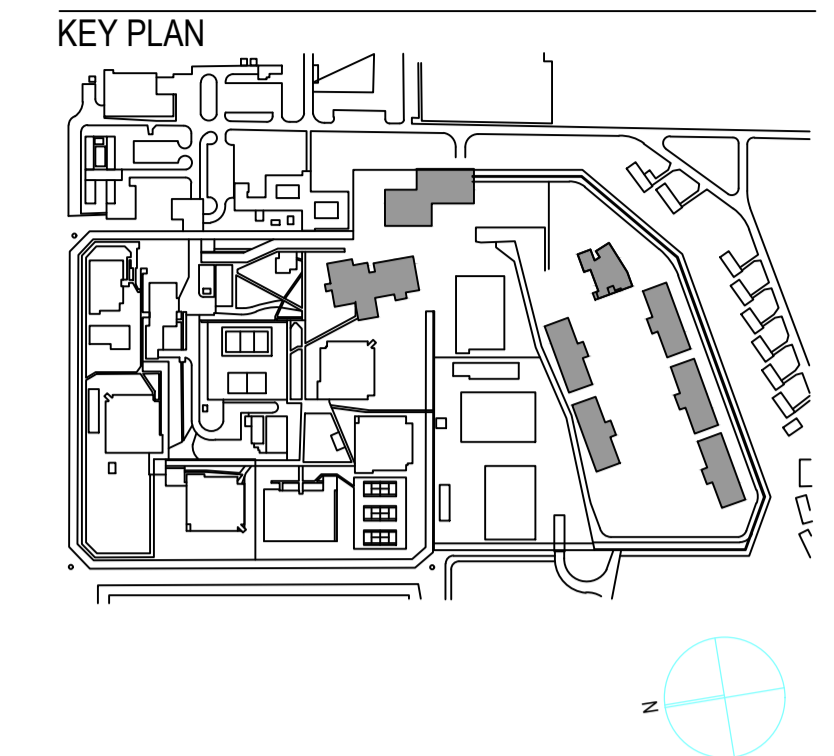


FOR CONTINUATION REFER TO SHEET 2

FOR CONTINUATION REFER TO SHEET 1

FOR CONTINUATION REFER TO SHEET 1 INSET A

GENERAL NOTES  
 1. VERIFY ALL DIMENSIONS AND LEVELS ON SITE BY SURVEY CHECK PRIOR TO ORDERING OR CONSTRUCTION. DO NOT SCALE DRAWINGS.  
 2. DRAWINGS SHALL NOT BE USED FOR CONSTRUCTION PURPOSES UNTIL ISSUED FOR CONSTRUCTION.



REVISIONS

REV.	DESCRIPTION	DATE	CHK.
1	PRELIMINARY TENDER ISSUE	06/07/2018	MC
2	ISSUED FOR TENDER	13/07/2018	MC

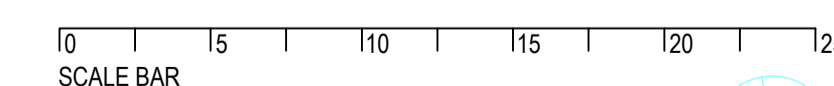
**PRELIMINARY**

CLIENT NSW JUSTICE INFRASTRUCTURE & ASSETS  
 LEVEL 2, 50 PHILLIP STREET, SYDNEY NSW 2000  
 D&C SUB-CONTRACTOR LENDLEASE  
 EXCHANGE PL, 300 BARANGAROO AVE, SYDNEY 2000, ph (02) 9236 6111  
 ARCHITECT GUYMER BAILEY ARCHITECTS  
 19 TERRACE STREET, TOOWONG QLD 4066, ph (07) 3870 9700  
 LANDSCAPE ARCHITECT GUYMER BAILEY ARCHITECTS  
 19 TERRACE STREET, TOOWONG QLD 4066, ph (07) 3870 9700  
 STRUCTURAL / CIVIL NORTHROP CONSULTING ENGINEERS Pty Ltd  
 LEVEL 11, 345 GEORGE STREET, SYDNEY NSW 2000, ph (02) 9241 4188  
 SERVICES JHA  
 LEVEL 23, 101 MILLER ST, NTH SYDNEY NSW 2060, ph (02) 9437 1000  
 SECURITY / COMMS SECURITY CONSULTING GROUP  
 LEVEL 8, 66 GOULBURN STREET, SYDNEY NSW 2000, ph (02) 8599 7550



PROJECT  
**CESSNOCK CORRECTIONAL CENTRE EXPANSION.**  
 LINDSAY STREET, CESSNOCK, NSW 2325

DRAWING TITLE  
**SITWORKS AND STORMWATER MANAGEMENT PLAN - SHEET 2**

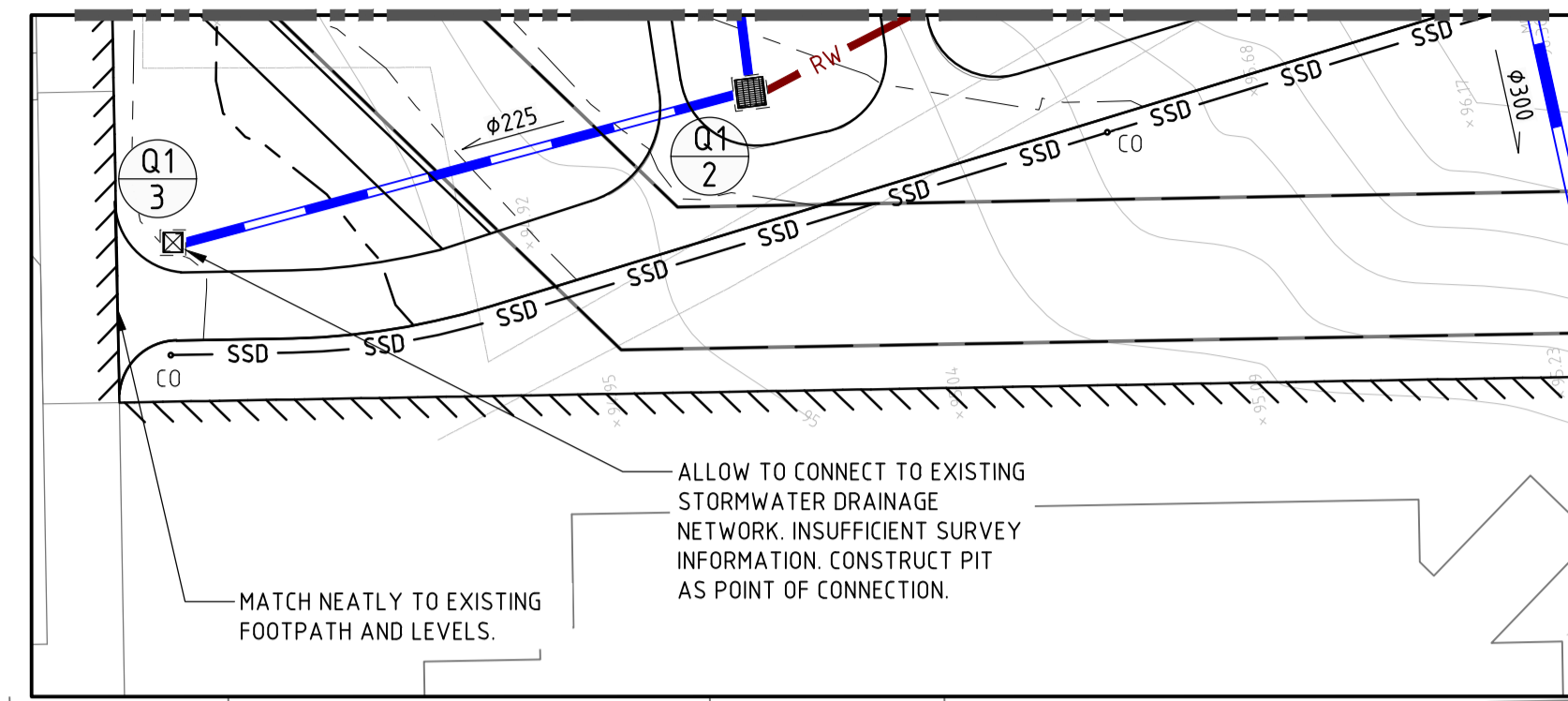


SCALE	DATE	DRAWN	PROJECT NORTH	CHECKED	APPROVED
1:250 @ A1	13.07.18	UM	MC	AD	REV 2
PROJECT No.	DRAWING No.	STAGE	REV		
180594	CV-AA-60.02				

PRINT DATE: 13.07.18  
 PREPARED: F01018-Sub/0204 - Cessnock Correctional Centre - Level 2 Stormwater Management Plan - CIVIL CAD P0204/2018/01-01-01-01

FOR CONTINUATION REFER TO SHEET 1

FOR CONTINUATION REFER TO SHEET 2



INSET B

PROPOSED RETAINING WALL  
 MAX 1m HIGH. REFER DETAIL.

MATCH NEATLY TO EXISTING FOOTPATH AND LEVELS.

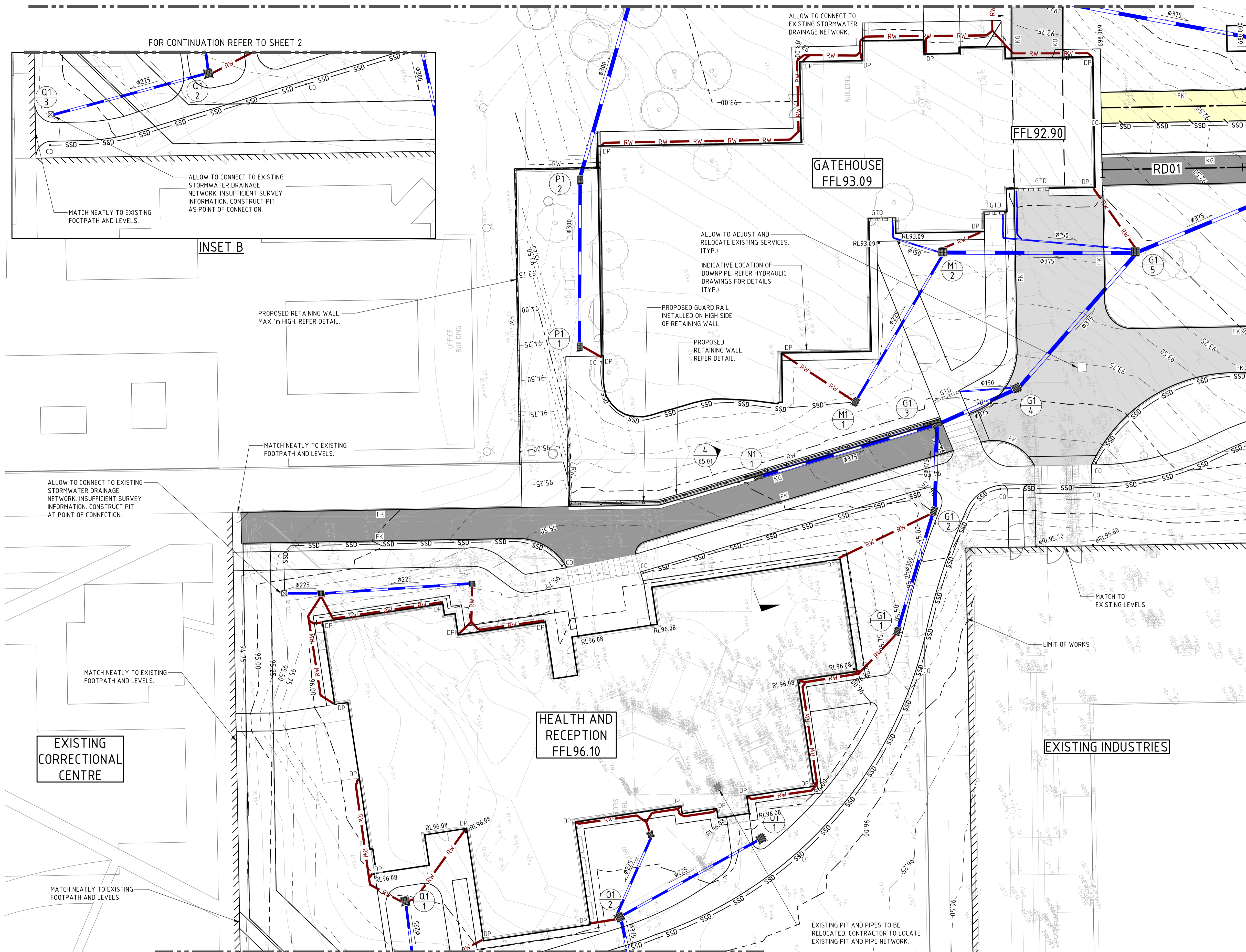
ALLOW TO CONNECT TO EXISTING STORMWATER DRAINAGE NETWORK. INSUFFICIENT SURVEY INFORMATION. CONSTRUCT PIT AT POINT OF CONNECTION.

MATCH NEATLY TO EXISTING FOOTPATH AND LEVELS.

EXISTING CORRECTIONAL CENTRE

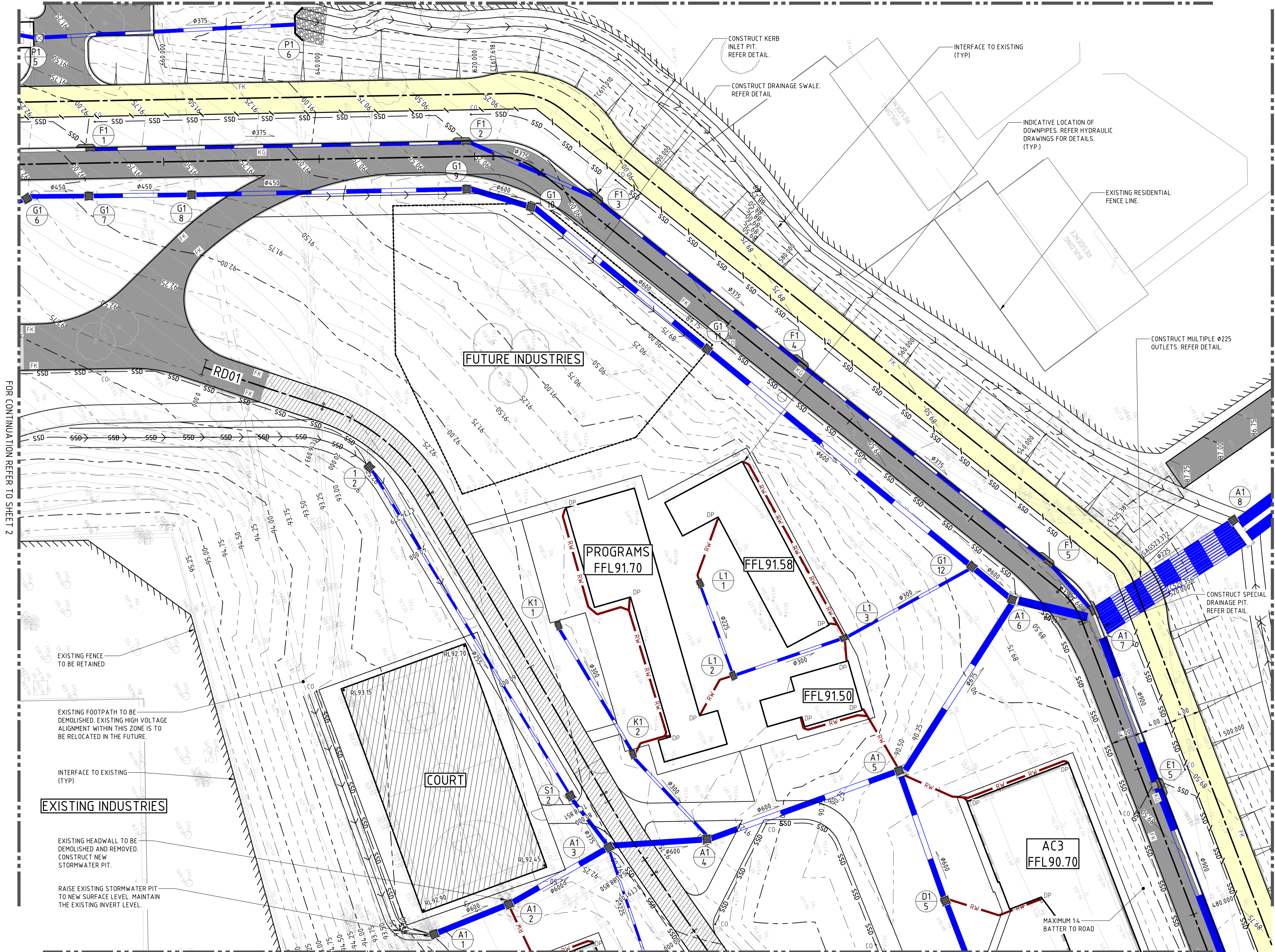
MATCH NEATLY TO EXISTING FOOTPATH AND LEVELS.

FOR CONTINUATION REFER TO SHEET 2 INSET B



FOR CONTINUATION REFER TO SHEET 3

FOR CONTINUATION REFER TO SHEET 1

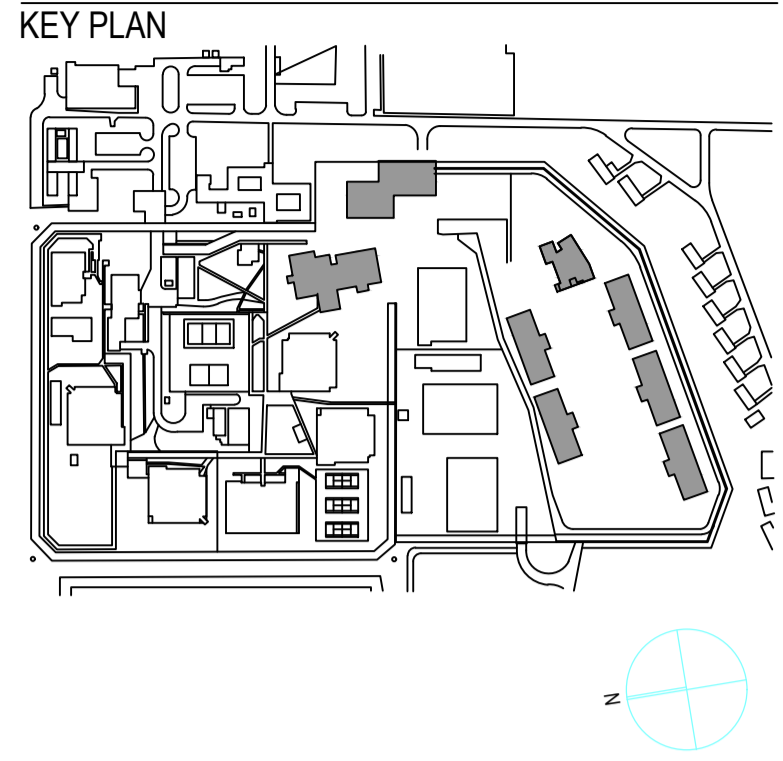


FOR CONTINUATION REFER TO SHEET 2

FOR CONTINUATION REFER TO SHEET 4

FOR CONTINUATION REFER TO SHEET 5

- GENERAL NOTES
1. VERIFY ALL DIMENSIONS AND LEVELS ON SITE BY SURVEY CHECK PRIOR TO ORDERING OR CONSTRUCTION. DO NOT SCALE DRAWINGS.
  2. DRAWINGS SHALL NOT BE USED FOR CONSTRUCTION PURPOSES UNTIL ISSUED FOR CONSTRUCTION.



REVISIONS

REV.	DESCRIPTION	DATE	CHK
1	PRELIMINARY TENDER ISSUE	06/07/2018	MC
2	ISSUED FOR TENDER	13/07/2018	MC

**PRELIMINARY**

CLIENT NSW JUSTICE INFRASTRUCTURE & ASSETS  
LEVEL 2, 50 PHILLIP STREET, SYDNEY NSW 2000

D&C SUB-CONTRACTOR LENDLEASE  
EXCHANGE PL, 300 BARANGAROO AVE, SYDNEY 2000, ph (02) 9236 6111

ARCHITECT GUYMER BAILEY ARCHITECTS  
19 TERRACE STREET, TOOWONG QLD 4066, ph (07) 3870 9700

LANDSCAPE ARCHITECT GUYMER BAILEY ARCHITECTS  
19 TERRACE STREET, TOOWONG QLD 4066, ph (07) 3870 9700

STRUCTURAL / CIVIL NORTHROP CONSULTING ENGINEERS Pty Ltd  
LEVEL 11, 345 GEORGE STREET, SYDNEY NSW 2000, ph (02) 9241 4188

SERVICES JHA  
LEVEL 23, 101 MILLER ST, NTH SYDNEY NSW 2060, ph (02) 9437 1000

SECURITY / COMMS SECURITY CONSULTING GROUP  
LEVEL 8, 66 GOULBURN STREET, SYDNEY NSW 2000, ph (02) 8599 7550

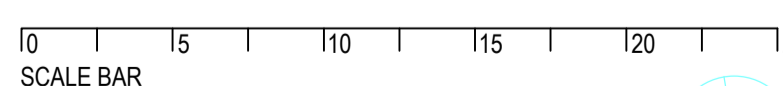


**NORTHROP**  
Sydney  
Level 11 345 George Street, Sydney NSW 2000  
Ph (02) 9241 4188 Fax (02) 9241 4324  
Email sydney@northrop.com.au ABN 81 094 433 100

GUYMER | BAILEY architects

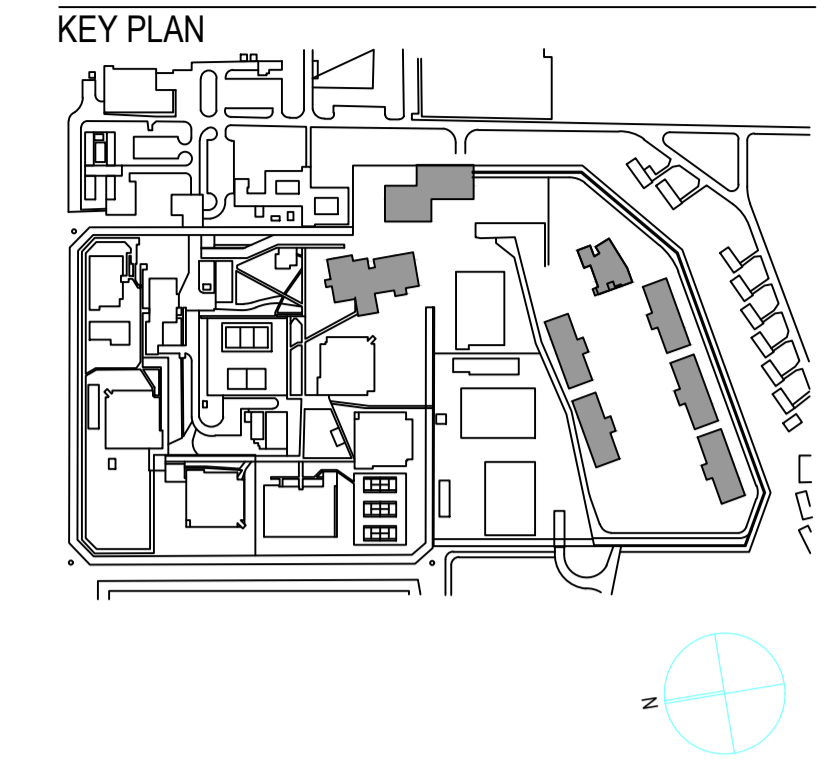
PROJECT  
**CESSNOCK CORRECTIONAL CENTRE EXPANSION.**  
LINDSAY STREET, CESSNOCK, NSW 2325

DRAWING TITLE  
**SITWORKS AND STORMWATER MANAGEMENT PLAN - SHEET 3**



SCALE	PROJECT NORTH			
1:250 @ A1	DRAWN	CHECKED	APPROVED	
DATE 13.07.18	UM	MC	AD	
PROJECT No. 180594	DRAWING No. CV-AA-60.03	STAGE	REV	
			2	

**GENERAL NOTES**  
 1. VERIFY ALL DIMENSIONS AND LEVELS ON SITE BY SURVEY CHECK PRIOR TO ORDERING OR CONSTRUCTION. DO NOT SCALE DRAWINGS.  
 2. DRAWINGS SHALL NOT BE USED FOR CONSTRUCTION PURPOSES UNTIL ISSUED FOR CONSTRUCTION.



**REVISIONS**

REV.	DESCRIPTION	DATE	CHK.
1	PRELIMINARY TENDER ISSUE	08/07/2018	MC
2	ISSUED FOR TENDER	13/07/2018	MC

**PRELIMINARY**

CLIENT: NSW JUSTICE INFRASTRUCTURE & ASSETS  
 LEVEL 2, 50 PHILLIP STREET, SYDNEY NSW 2000  
 D&C SUB-CONTRACTOR: LENDLEASE  
 EXCHANGE PL. 300 BARANGAROO AVE, SYDNEY 2000, ph (02) 9236 6111  
 ARCHITECT: GUYMER BAILEY ARCHITECTS  
 19 TERRACE STREET, TOOWONG QLD 4066, ph (07) 3870 9700  
 LANDSCAPE ARCHITECT: GUYMER BAILEY ARCHITECTS  
 19 TERRACE STREET, TOOWONG QLD 4066, ph (07) 3870 9700  
 STRUCTURAL / CIVIL: NORTHRUP CONSULTING ENGINEERS Pty Ltd  
 LEVEL 11, 345 GEORGE STREET, SYDNEY NSW 2000, ph (02) 9241 4188  
 SERVICES: JHA  
 LEVEL 23, 101 MILLER ST, NTH SYDNEY NSW 2060, ph (02) 9437 1000  
 SECURITY / COMMS: SECURITY CONSULTING GROUP  
 LEVEL 8, 66 GOULBURN STREET, SYDNEY NSW 2000, ph (02) 8599 7550

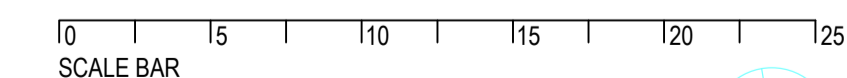


Sydney  
 Level 11 345 George Street, Sydney NSW 2000  
 Ph (02) 9241 4188 Fax (02) 9241 4324  
 Email: sydney@northrop.com.au ABN 81 094 433 100

GUYMER | BAILEY architects

PROJECT  
**CESSNOCK CORRECTIONAL CENTRE EXPANSION.**  
 LINDSAY STREET, CESSNOCK, NSW 2325

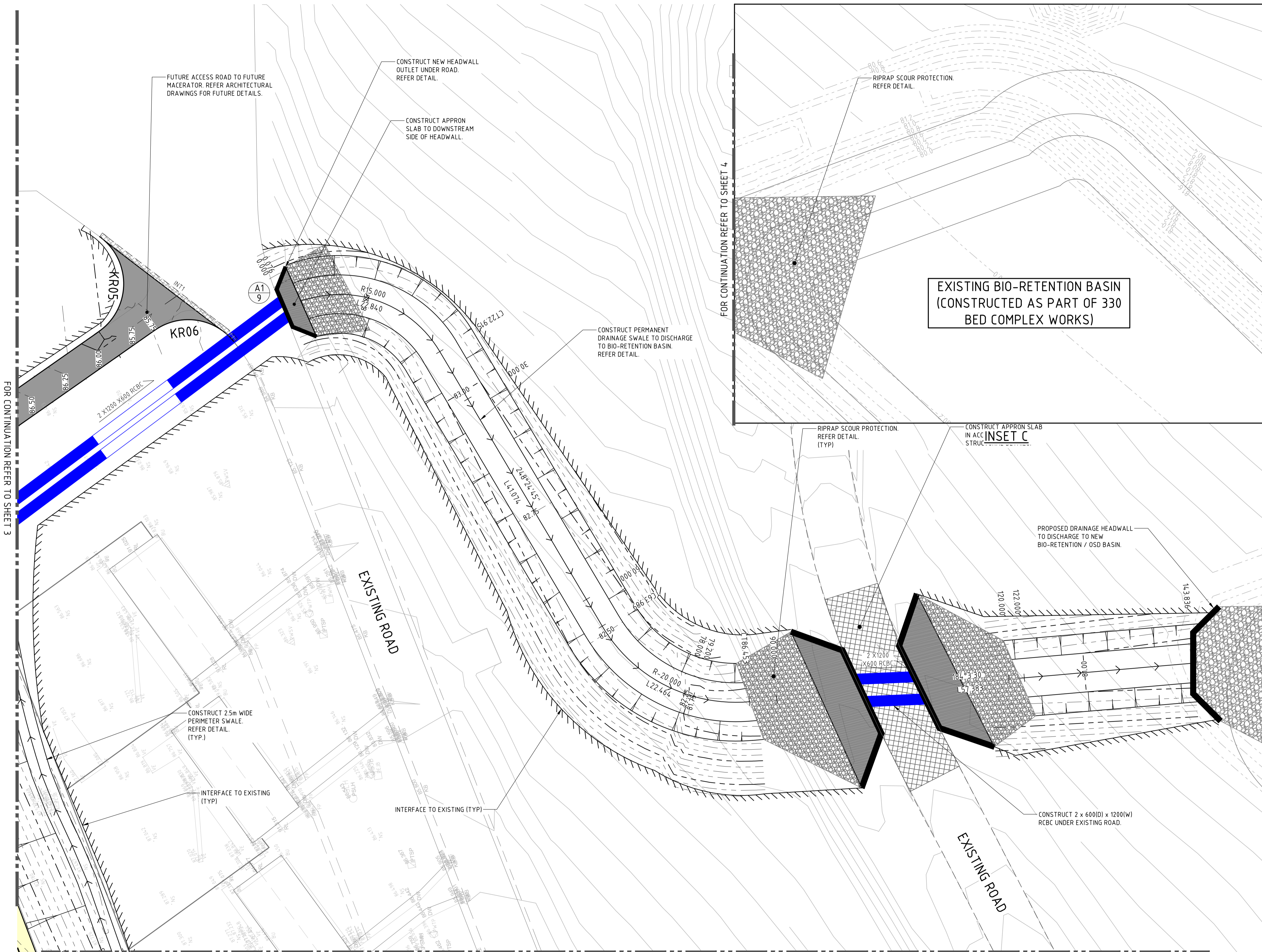
DRAWING TITLE  
**SITWORKS AND STORMWATER MANAGEMENT PLAN - SHEET 4**



SCALE: 1:250 @ A1 PROJECT NORTH

DATE	DRAWN	CHECKED	APPROVED
13.07.18	UM	MC	AD
PROJECT No.	DRAWING No.	STAGE	REV
180594	CV-AA-60.04		2

PRINT DATE: 13.07.18  
 PREPARED: P:\180594\180594 - Cessnock Correctional Centre - Landworks\Drawings\Siteworks\CV-AA-60.04\230518.DWG



FOR CONTINUATION REFER TO SHEET 3

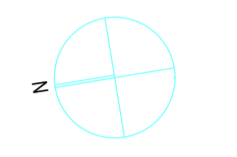
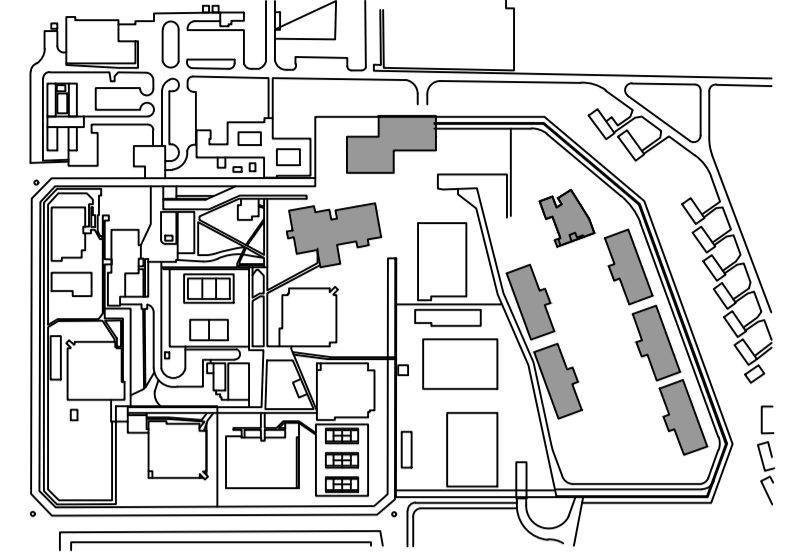
FOR CONTINUATION REFER TO SHEET 4

FOR CONTINUATION REFER TO SHEET 4, INSET C

FOR CONTINUATION REFER TO SHEET 6

**GENERAL NOTES**  
 1. VERIFY ALL DIMENSIONS AND LEVELS ON SITE BY SURVEY CHECK PRIOR TO ORDERING OR CONSTRUCTION. DO NOT SCALE DRAWINGS.  
 2. DRAWINGS SHALL NOT BE USED FOR CONSTRUCTION PURPOSES UNTIL ISSUED FOR CONSTRUCTION.

**KEY PLAN**



**REVISIONS**

REV.	DESCRIPTION	DATE	CHK
1	PRELIMINARY TENDER ISSUE	06/07/2018	MC
2	ISSUED FOR TENDER	13/07/2018	MC

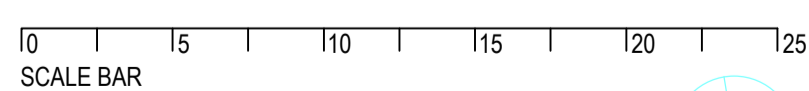
**PRELIMINARY**

CLIENT: NSW JUSTICE INFRASTRUCTURE & ASSETS  
 LEVEL 2, 50 PHILLIP STREET, SYDNEY NSW 2000  
 D&C SUB-CONTRACTOR: LENDLEASE  
 EXCHANGE PL. 300 BARANGAROO AVE, SYDNEY 2000, ph (02) 9236 6111  
 ARCHITECT: GUYMER BAILEY ARCHITECTS  
 19 TERRACE STREET, TOOWONG QLD 4066, ph (07) 3870 9700  
 LANDSCAPE ARCHITECT: GUYMER BAILEY ARCHITECTS  
 19 TERRACE STREET, TOOWONG QLD 4066, ph (07) 3870 9700  
 STRUCTURAL / CIVIL: NORTHROP CONSULTING ENGINEERS Pty Ltd  
 LEVEL 23, 101 MILLER ST, NTH SYDNEY NSW 2060, ph (02) 9437 1000  
 SERVICES: JHA  
 LEVEL 23, 101 MILLER ST, NTH SYDNEY NSW 2060, ph (02) 9437 1000  
 SECURITY / COMMIS: SECURITY CONSULTING GROUP  
 LEVEL 8, 66 GOULBURN STREET, SYDNEY NSW 2000, ph (02) 8599 7550



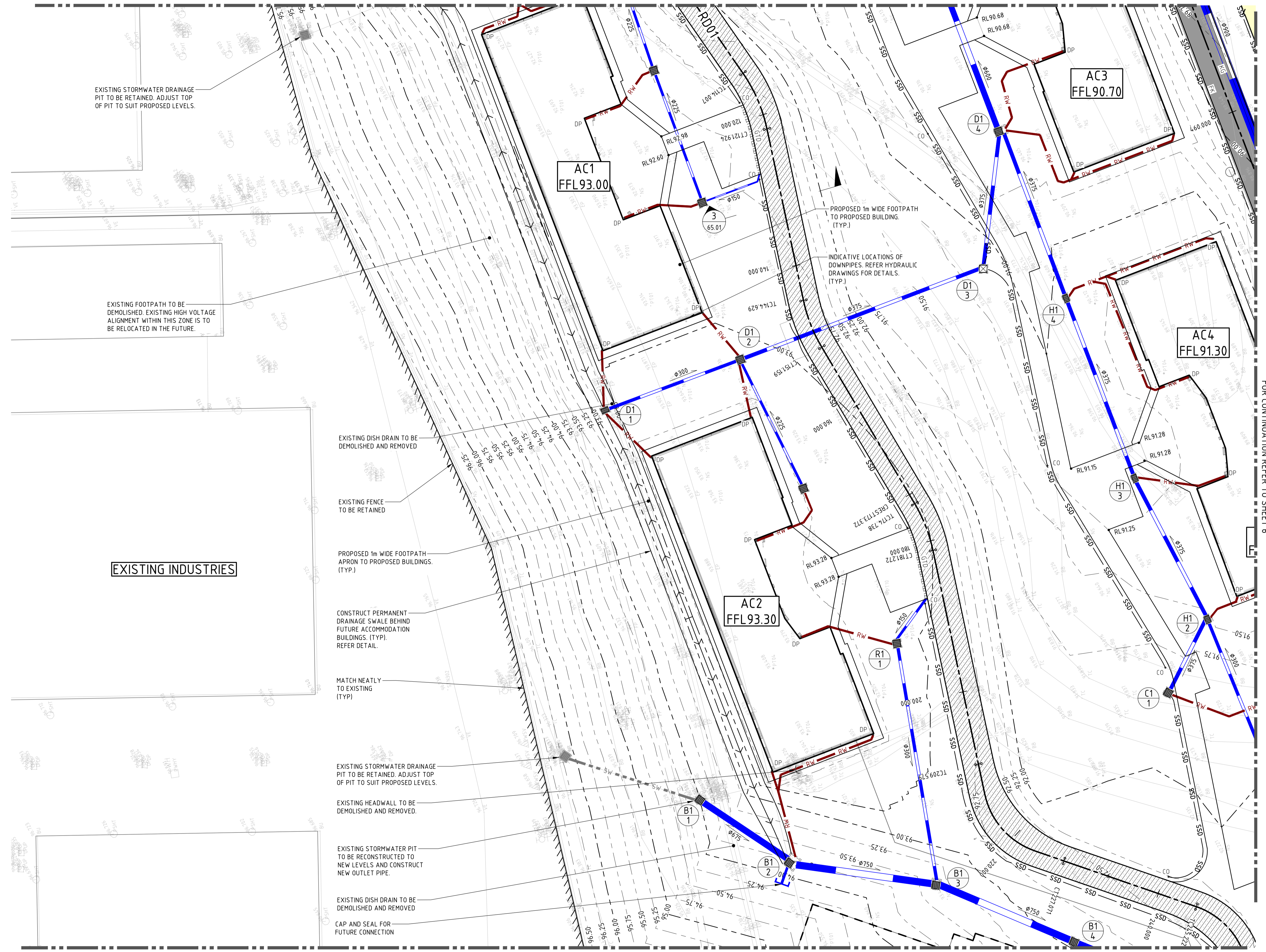
PROJECT: **CESSNOCK CORRECTIONAL CENTRE EXPANSION.**  
 LINDSAY STREET, CESSNOCK, NSW 2325

**DRAWING TITLE**  
**SITeworks AND STORMwater**  
**MANAGEMENT PLAN - SHEET 5**



SCALE: 1:250 @ A1	PROJECT NORTH		
DATE: 13.07.18	DRAWN: UM	CHECKED: MC	APPROVED: AD
PROJECT No: 180594	DRAWING No: CV-AA-60.05	STAGE: 2	REV: 2

FOR CONTINUATION REFER TO SHEET 3



FOR CONTINUATION REFER TO SHEET 7

FOR CONTINUATION REFER TO SHEET 6

EXISTING STORMWATER DRAINAGE PIT TO BE RETAINED. ADJUST TOP OF PIT TO SUIT PROPOSED LEVELS.

EXISTING FOOTPATH TO BE DEMOLISHED. EXISTING HIGH VOLTAGE ALIGNMENT WITHIN THIS ZONE IS TO BE RELOCATED IN THE FUTURE.

EXISTING DISH DRAIN TO BE DEMOLISHED AND REMOVED

EXISTING FENCE TO BE RETAINED

PROPOSED 1m WIDE FOOTPATH APRON TO PROPOSED BUILDINGS. (TYP.)

CONSTRUCT PERMANENT DRAINAGE SWALE BEHIND FUTURE ACCOMMODATION BUILDINGS. (TYP). REFER DETAIL.

MATCH NEATLY TO EXISTING (TYP)

EXISTING STORMWATER DRAINAGE PIT TO BE RETAINED. ADJUST TOP OF PIT TO SUIT PROPOSED LEVELS.

EXISTING HEADWALL TO BE DEMOLISHED AND REMOVED.

EXISTING STORMWATER PIT TO BE RECONSTRUCTED TO NEW LEVELS AND CONSTRUCT NEW OUTLET PIPE.

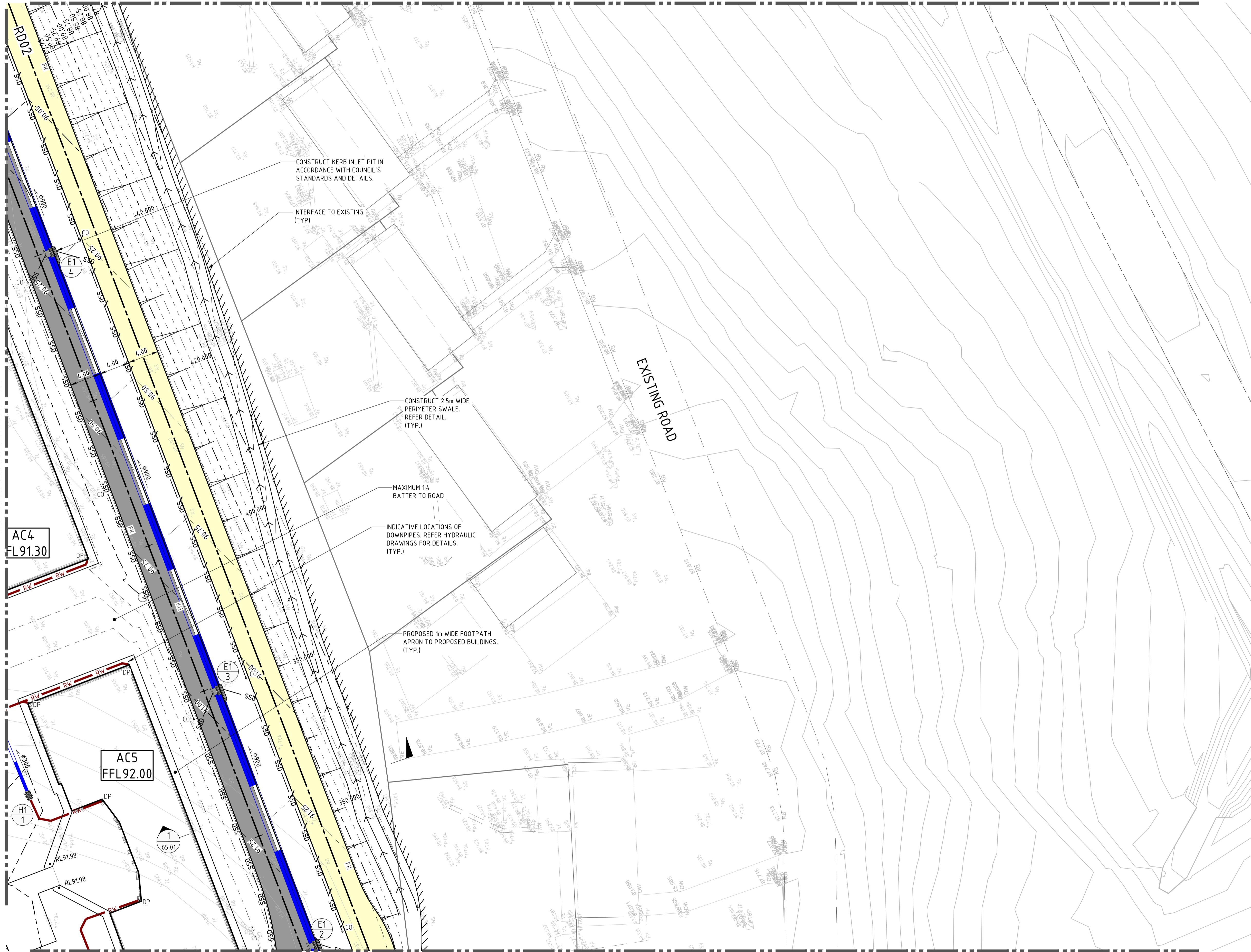
EXISTING DISH DRAIN TO BE DEMOLISHED AND REMOVED  
 CAP AND SEAL FOR FUTURE CONNECTION

**EXISTING INDUSTRIES**

PROPOSED 1m WIDE FOOTPATH TO PROPOSED BUILDING. (TYP.)

INDICATIVE LOCATIONS OF DOWNPIPES. REFER HYDRAULIC DRAWINGS FOR DETAILS. (TYP.)

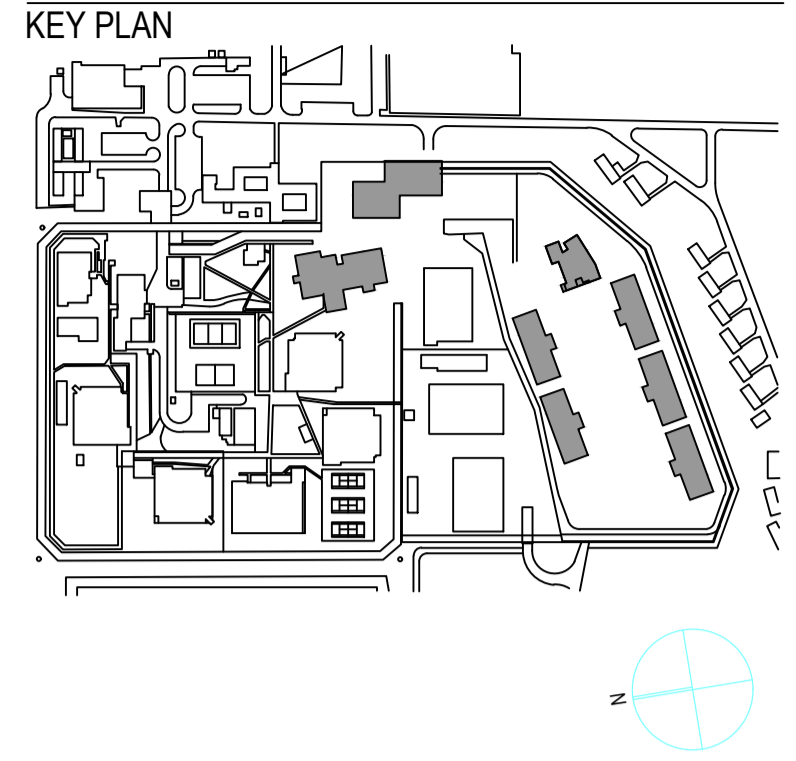
FOR CONTINUATION REFER TO SHEET 4



FOR CONTINUATION REFER TO SHEET 5

FOR CONTINUATION REFER TO SHEET 8

- GENERAL NOTES**
1. VERIFY ALL DIMENSIONS AND LEVELS ON SITE BY SURVEY CHECK PRIOR TO ORDERING OR CONSTRUCTION. DO NOT SCALE DRAWINGS.
  2. DRAWINGS SHALL NOT BE USED FOR CONSTRUCTION PURPOSES UNTIL ISSUED FOR CONSTRUCTION.



**REVISIONS**

REV.	DESCRIPTION	DATE	CHK
1	PRELIMINARY TENDER ISSUE	06/07/2018	MC
2	ISSUED FOR TENDER	13/07/2018	MC

**PRELIMINARY**

**CLIENT** NSW JUSTICE INFRASTRUCTURE & ASSETS  
LEVEL 2, 50 PHILLIP STREET, SYDNEY NSW 2000

**D&C SUB-CONTRACTOR** LENDLEASE  
EXCHANGE PL, 300 BARANGAROO AVE, SYDNEY 2000, ph (02) 9236 6111

**ARCHITECT** GUYMER BAILEY ARCHITECTS  
19 TERRACE STREET, TOOWONG QLD 4066, ph (07) 3870 9700

**LANDSCAPE ARCHITECT** GUYMER BAILEY ARCHITECTS  
19 TERRACE STREET, TOOWONG QLD 4066, ph (07) 3870 9700

**STRUCTURAL / CIVIL** NORTHPROP CONSULTING ENGINEERS Pty Ltd  
LEVEL 11, 345 GEORGE STREET, SYDNEY NSW 2000, ph (02) 9241 4188

**SERVICES** JHA  
LEVEL 23, 101 MILLER ST, NTH SYDNEY NSW 2060, ph (02) 9437 1000

**SECURITY / COMMS** SECURITY CONSULTING GROUP  
LEVEL 8, 66 GOULBURN STREET, SYDNEY NSW 2000, ph (02) 8599 7550

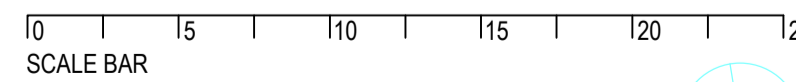


**NORTHPROP**  
Sydney  
Level 11 345 George Street, Sydney NSW 2000  
Ph (02) 9241 4188 Fax (02) 9241 4324  
Email sydney@northrop.com.au ABN 81 094 433 100

**GUYMER | BAILEY architects**

**PROJECT**  
**CESSNOCK CORRECTIONAL CENTRE EXPANSION.**  
LINDSAY STREET, CESSNOCK, NSW 2325

**DRAWING TITLE**  
**SITWORKS AND STORMWATER MANAGEMENT PLAN - SHEET 6**

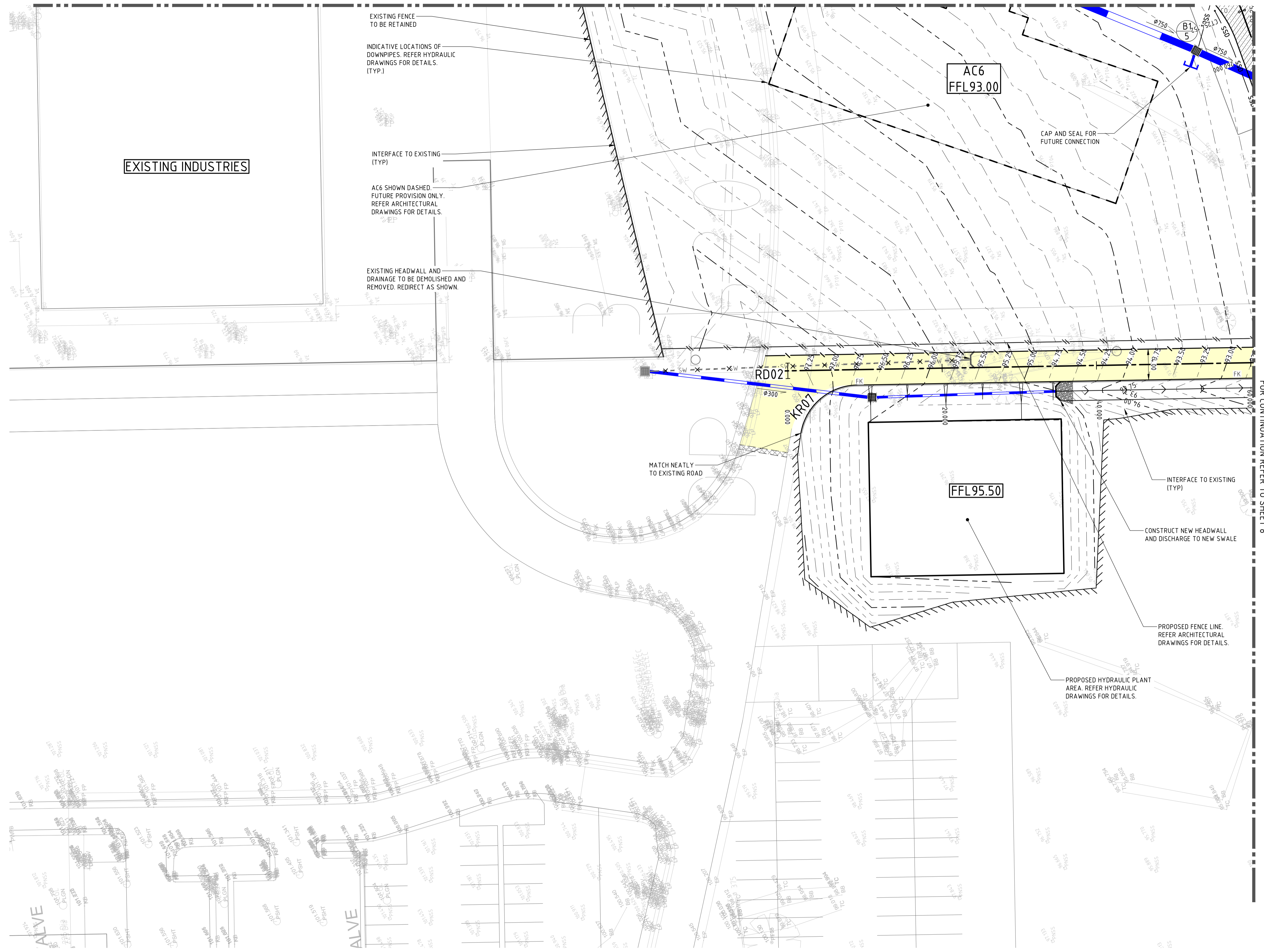


**SCALE** 1:250 @ A1

DATE	DRAWN	PROJECT NORTH	CHECKED	APPROVED
13.07.18	UM	MC	AD	
PROJECT No.	DRAWING No.	STAGE	REV	
180594	CV-AA-60.06		2	

PRINT DATE: 13.07.18  
FILE NAME: P:\2018\20180594 - Cessnock Correctional Centre - Level 2\Drawings\Site\Site\CV-AA-60.06 SITEWORKS AND STORMWATER MANAGEMENT PLAN - SHEET 6.dwg

FOR CONTINUATION REFER TO SHEET 5



EXISTING FENCE TO BE RETAINED  
INDICATIVE LOCATIONS OF DOWNPIPES. REFER HYDRAULIC DRAWINGS FOR DETAILS. (TYP.)

INTERFACE TO EXISTING (TYP)

AC6 SHOWN DASHED. FUTURE PROVISION ONLY. REFER ARCHITECTURAL DRAWINGS FOR DETAILS.

EXISTING HEADWALL AND DRAINAGE TO BE DEMOLISHED AND REMOVED. REDIRECT AS SHOWN.

MATCH NEATLY TO EXISTING ROAD

AC6  
FFL93.00

CAP AND SEAL FOR FUTURE CONNECTION

INTERFACE TO EXISTING (TYP)

CONSTRUCT NEW HEADWALL AND DISCHARGE TO NEW SWALE

PROPOSED FENCE LINE. REFER ARCHITECTURAL DRAWINGS FOR DETAILS.

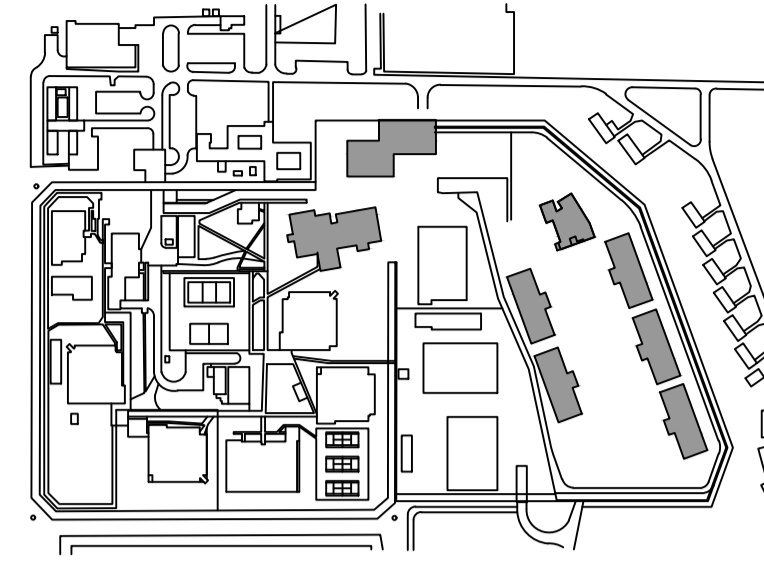
PROPOSED HYDRAULIC PLANT AREA. REFER HYDRAULIC DRAWINGS FOR DETAILS.

EXISTING INDUSTRIES

FFL95.50

**GENERAL NOTES**  
1. VERIFY ALL DIMENSIONS AND LEVELS ON SITE BY SURVEY CHECK PRIOR TO ORDERING OR CONSTRUCTION. DO NOT SCALE DRAWINGS.  
2. DRAWINGS SHALL NOT BE USED FOR CONSTRUCTION PURPOSES UNTIL ISSUED FOR CONSTRUCTION.

**KEY PLAN**



**REVISIONS**

REV.	DESCRIPTION	DATE	CHK
1	PRELIMINARY TENDER ISSUE	08/07/2018	MC
2	ISSUED FOR TENDER	13/07/2018	MC

### PRELIMINARY

CLIENT: NSW JUSTICE INFRASTRUCTURE & ASSETS  
LEVEL 2, 50 PHILLIP STREET, SYDNEY NSW 2000

D&C SUB-CONTRACTOR: LENDLEASE

EXCHANGE PL: 300 BARANGAROO AVE, SYDNEY 2000, ph (02) 9236 6111

ARCHITECT: GUYMER BAILEY ARCHITECTS  
19 TERRACE STREET, TOOWONG QLD 4066, ph (07) 3870 9700

LANDSCAPE ARCHITECT: GUYMER BAILEY ARCHITECTS  
19 TERRACE STREET, TOOWONG QLD 4066, ph (07) 3870 9700

STRUCTURAL / CIVIL: NORTHROP CONSULTING ENGINEERS Pty Ltd  
LEVEL 11, 345 GEORGE STREET, SYDNEY NSW 2000, ph (02) 9241 4188

SERVICES: JHA  
LEVEL 23, 101 MILLER ST, NTH SYDNEY NSW 2060, ph (02) 9437 1000

SECURITY / COMMS: SECURITY CONSULTING GROUP  
LEVEL 8, 66 GOULBURN STREET, SYDNEY NSW 2000, ph (02) 8599 7550

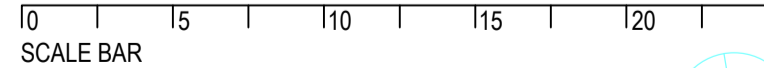


Sydney  
Level 11 345 George Street, Sydney NSW 2000  
Ph (02) 9241 4188 Fax (02) 9241 4324  
Email sydney@northrop.com.au ABN 81 094 433 100



PROJECT  
**CESSNOCK CORRECTIONAL CENTRE EXPANSION.**  
LINDSAY STREET, CESSNOCK, NSW 2325

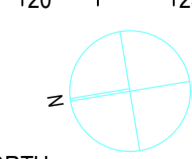
DRAWING TITLE  
**SITWORKS AND STORMWATER MANAGEMENT PLAN - SHEET 7**



SCALE 1:250 @ A1

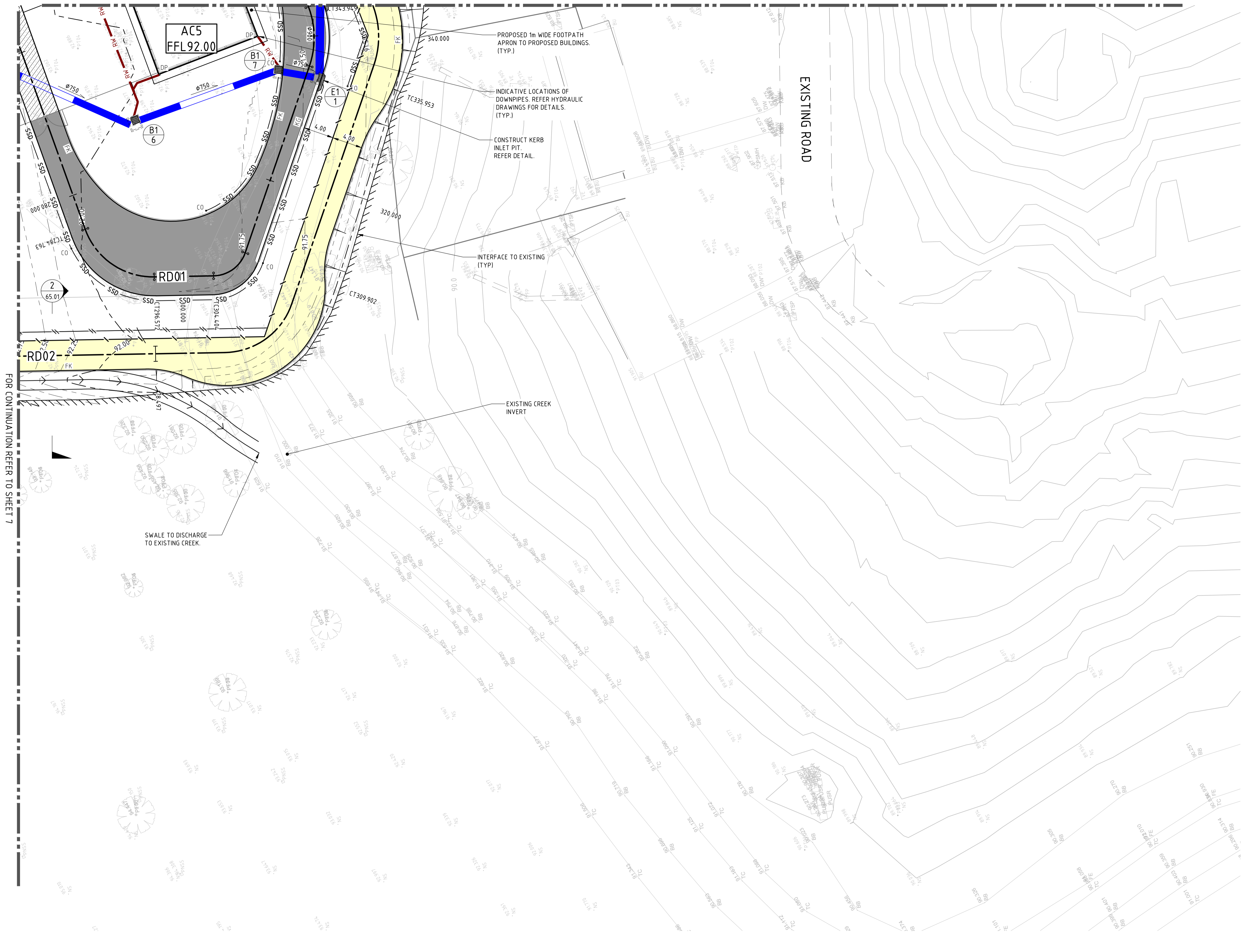
DATE	DRAWN	PROJECT NORTH	APPROVED
13.07.18	UM	MC	AD
PROJECT No.	DRAWING No.	STAGE	REV
180594	CV-AA-60.07		2

PRINT DATE: 13.07.18  
PREPARED: 13.07.18 / 180594 - Cessnock Correctional Centre - Level 2 - 50 Phillip Street - Sydney NSW 2000 - Justice



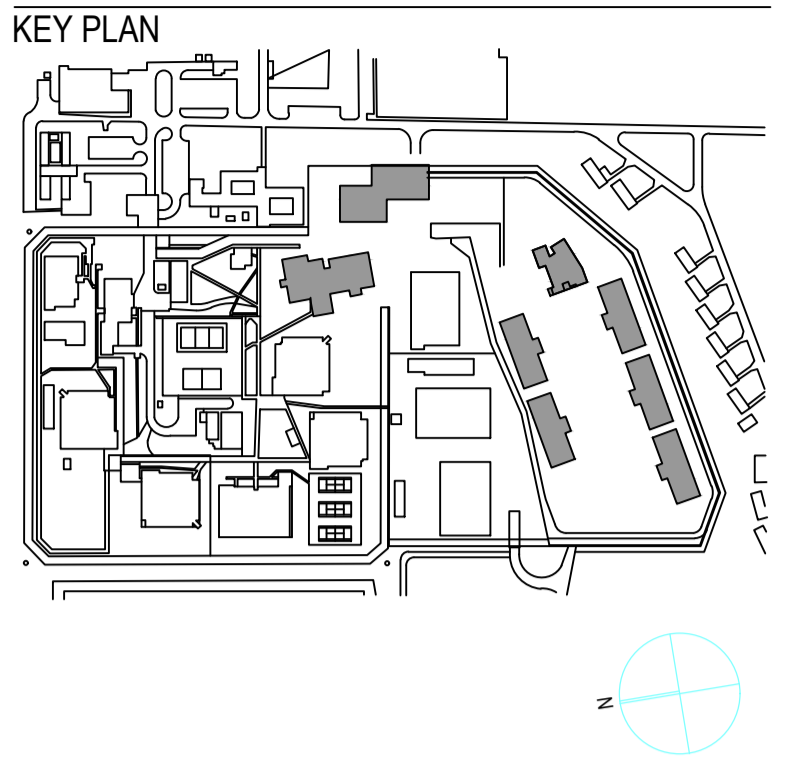


FOR CONTINUATION REFER TO SHEET 1



FOR CONTINUATION REFER TO SHEET 7

**GENERAL NOTES**  
 1. VERIFY ALL DIMENSIONS AND LEVELS ON SITE BY SURVEY CHECK PRIOR TO ORDERING OR CONSTRUCTION. DO NOT SCALE DRAWINGS.  
 2. DRAWINGS SHALL NOT BE USED FOR CONSTRUCTION PURPOSES UNTIL ISSUED FOR CONSTRUCTION.



**REVISIONS**

REV.	DESCRIPTION	DATE	CHK
1	PRELIMINARY TENDER ISSUE	06/07/2018	MC
2	ISSUED FOR TENDER	13/07/2018	MC

**PRELIMINARY**

**CLIENT** NSW JUSTICE INFRASTRUCTURE & ASSETS  
 LEVEL 2, 50 PHILLIP STREET, SYDNEY NSW 2000

**D&C SUB-CONTRACTOR** LENDLEASE  
 EXCHANGE PL, 300 BARANGAROO AVE, SYDNEY 2000, ph (02) 9236 6111

**ARCHITECT** GUYMER BAILEY ARCHITECTS  
 19 TERRACE STREET, TOOWONG QLD 4066, ph (07) 3870 9700

**LANDSCAPE ARCHITECT** GUYMER BAILEY ARCHITECTS  
 19 TERRACE STREET, TOOWONG QLD 4066, ph (07) 3870 9700

**STRUCTURAL / CIVIL** NORTHROP CONSULTING ENGINEERS Pty Ltd  
 LEVEL 11, 345 GEORGE STREET, SYDNEY NSW 2000, ph (02) 9241 4188

**SERVICES** JHA  
 LEVEL 23, 101 MILLER ST, NTH SYDNEY NSW 2060, ph (02) 9437 1000

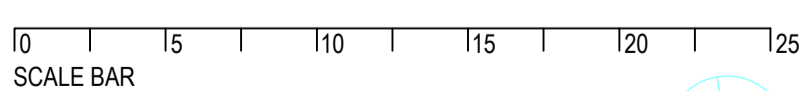
**SECURITY / COMMIS** SECURITY CONSULTING GROUP  
 LEVEL 8, 66 GOULBURN STREET, SYDNEY NSW 2000, ph (02) 8599 7550



**GUYMER BAILEY architects**

**PROJECT**  
**CESSNOCK CORRECTIONAL CENTRE EXPANSION.**  
 LINDSAY STREET, CESSNOCK, NSW 2325

**DRAWING TITLE**  
**SITWORKS AND STORMWATER MANAGEMENT PLAN - SHEET 8**



**SCALE** 1:250 @ A1

**DATE** 13.07.18

**PROJECT No.** 180594

**DATE** 13.07.18

**PROJECT No.** 180594

**PRINT DATE:** 13.07.18

DRAWN	CHECKED	PROJECT NORTH	APPROVED
UM	MC	MC	AD

**CV-AA-60.08 2**

PREPARED BY: 13018/18/UM/UM - CHECKED BY: 13018/18/MC/MC - PROJECT NORTH APPROVED BY: 13018/18/AD/AD - DATE: 13/07/18