



Police
& Justice

Statistical Publication

NSW Inmate Census 2013: Summary of Characteristics

**Simon Corben
Data & Systems Manager**

**Statistical Publication No. 41
February 2014
ISSN 0814 1215**

Corrective Services NSW

NSW INMATE CENSUS 2013

Summary of Characteristics

Simon Corben
Data and Systems Manager
Corrections Research, Evaluation
and Statistics
February 2014

Statistical Publication No. 41

ISSN 0814 1215

© Corrective Services NSW

Corrections Research, Evaluation and Statistics
Corrective Services NSW
Level 3, 20 Lee Street,
SYDNEY NSW 2000

Telephone: (02) 8346 - 1556 Facsimile: (02) 8346 - 1590

E-mail: simon.corben@dcs.nsw.gov.au
research.enquiries@dcs.nsw.gov.au

Web: <http://www.correctiveservices.nsw.gov.au>

Table of Contents

Explanatory notes	i
1. All inmates (includes periodic detainees)	
Statistical summary	3
Table 1.1 Demographic characteristics	4
Table 1.2 Legal status characteristics	5
Table 1.3 Characteristics of offences and sentences	6
Table 1.4 Inmate security classification	9
Table 1.5 Location and correctional centre security classification	10
Table 1.6 Country of birth	12
Table 1.7 Statistical area of last known address	16
2. Full-time custody inmates	
Statistical summary	21
Table 2.1 Demographic characteristics	22
Table 2.2 Legal status characteristics	23
Table 2.3 Characteristics of offences and sentences	24
Table 2.4 Inmate security classification	27
Table 2.5 Location and correctional centre security classification	28
Table 2.6 Country of birth	30
Table 2.7 Statistical area of last known address	34
3. Periodic detainees	
Statistical summary	39
Table 3.1 Demographic characteristics	40
Table 3.2 Legal status characteristics	41
Table 3.3 Characteristics of offences and sentences	42
Table 3.4 Location and classification of detainees	44
Table 3.5 Country of birth	45
Table 3.6 Statistical area of last known address	49
4. Most serious offence by aggregate sentence length (sentenced inmates) or time in custody (unsentenced inmates)	
Table 4.1.1 Most serious offence by aggregate sentence imposed – Sentenced male inmates in full-time custody	53
Table 4.1.2 Most serious offence by aggregate sentence imposed – Sentenced female inmates in full-time custody	54
Table 4.1.3 Most serious offence by aggregate sentence imposed – All sentenced inmates in full-time custody	55
Table 4.2.1 Most serious offence by aggregate sentence imposed – Sentenced male inmates in full-time custody (percentage)	56

Table 4.2.2	Most serious offence by aggregate sentence imposed – Sentenced female inmates in full-time custody (percentage)	57
Table 4.2.3	Most serious offence by aggregate sentence imposed – All sentenced inmates in full-time custody (percentage)	58
Table 4.3.1	Most serious offence by aggregate sentence imposed – Sentenced male detainees in periodic detention	59
Table 4.3.2	Most serious offence by aggregate sentence imposed – Sentenced female detainees in periodic detention	60
Table 4.3.3	Most serious offence by aggregate sentence imposed – All sentenced detainees in periodic detention	61
Table 4.4.1	Most serious offence by time in custody – Unsentenced male inmates in full-time custody	62
Table 4.4.2	Most serious offence by time in custody – Unsentenced female inmates in full-time custody	63
Table 4.4.3	Most serious offence by time in custody – All unsentenced inmates in full-time custody	64

5. Population trends

Table 5.1	Trends in the total inmate population by place of detention; 1982 to 2013	67
Table 5.2	Trends in the gender of the inmate population; 1982 to 2013	68
Figure 1	Trends in the gender of the inmate population (includes periodic detention)	69
Figure 2	Trends in inmate custodial programs (includes periodic detention)	69
Table 5.3	Trends in the Aboriginal/Torres Strait Islander status of inmates; 1982 to 2013	70
Table 5.4	Trends in the legal status of inmates; 1982 to 2013	71
Figure 3	Trends in the Aboriginal/TSI inmates (includes periodic detention)	72
Figure 4	Trends in the legal status of inmates (includes periodic detention)	72
Table 5.5	Trends in the Aboriginal and Torres Strait Islander inmate population by gender; 1982 to 2013	73
Table 5.6	Trends in the Aboriginal and Torres Strait Islander inmate population by gender and custodial program; 1982 to 2013	74
Table 5.7	Trends in the security classification of convicted inmates (excluding periodic detention); 1983 to 2013	75
Table 5.8	Trends in most serious offence (Australian Standard Offence Classification - ASOC); 1982 to 2013	76
Figure 5	Trends in the security classification of convicted inmates (excludes periodic detention)	77
Figure 6	Trends in the most serious offence (includes periodic detention)	77
Table 5.9	Trends in age profile of inmates; 1982 to 2013	78

Figure 7	Trends in the age profile of inmates (includes periodic detention	79
Figure 8	Trends in the age profile of Aboriginal/TSI inmates (includes periodic detention.....	79

Appendices

Appendix 1: Australian Standard Offence Classification (ASOC)	83
Appendix 2: Offence grouping for trends	87

EXPLANATORY NOTES

(a) General information

The New South Wales Inmate Census was conducted as part of the National Australian Prison Census for 30 June 2013. The first Australian National Prison Census was conducted on 30 June 1982 and both the NSW and National inmate censuses have been conducted annually since that time. Previous publications of the NSW Inmate Census can be obtained from the Corrective Services NSW website (<http://www.correctiveservices.nsw.gov.au>). National prison census publications are published by the Australian Bureau of Statistics (ABS) (see *Prisoners in Australia ABS Catalogue 4517.0*).

(b) Scope of data collection

This publication contains summary statistics of inmates managed by Corrective Services NSW (CSNSW) who were held in full-time custody in New South Wales at midnight on 30 June 2013 and of inmates with a 'live' order for periodic detention as at 30 June 2013. Inmates temporarily absent from a correctional centre (as at midnight on Census night) under s26 of the *Crimes (Administration of Sentences) Act, 1999* have been excluded with the exception of those inmates housed at Parramatta Transitional Centre and Bolwara House Transitional Centre (Emu Plains). Police custody 'police-bail refused' detainees held in police/court complexes as at midnight on Census night under the management of CSNSW (as provided under Part 13 of the *Crimes (Administration of Sentences) Act 1999*) are also included.

Prior to 2007, the scope of the NSW Inmate Census was based strictly based on inmates held in gazetted correctional centres and periodic detention centres as at midnight on 30 June each year. Despite the fact that CSNSW had managed inmates in police/court complexes since 1992 and transitional centres since 1996, these inmates were not considered for inclusion in the scope of the Census data collection because they were not held in gazetted correctional centres. Between 1997 and 2006, this publication series has included these statistics as separate totals for inmates held in police/court complexes and transitional centres.

Offenders residing in non-custodial facilities managed by CSNSW such as Community Offender Community Offender Support Program Centres (COSP Centres) and community residential facilities (such as the Balund-a facility at Tabulam) are excluded from the scope of the inmate Census as these offenders are not held in custody. These offenders are incorporated within the scope of the NSW Community Offender Census (available at <http://www.correctiveservices.nsw.gov.au>). Persons held at the NSW Department of Health's Forensic Hospital (adjacent to Long Bay Complex) are also excluded as this facility is not a gazetted correctional centre nor is it managed by CSNSW.

The scope for this publication is closely aligned with the ABS's National Australian Prison Census. However, as a census of adult prisoners, the National Australian Prison Census excludes all inmates held at Kariong Juvenile Correctional Centre in NSW (regardless of age). On 30 June 2013 there were 31 inmates held at Kariong Juvenile Correctional Centre which have been included in this publication.

(c) Concept of an episode of imprisonment

Statistical information describing legal status, type of sentence, court type, sentence terms, most serious offence *etc* all relate to the episode of imprisonment current at the time of the Census. For the purposes of this publication, an episode of imprisonment is taken as a continuous period of imprisonment under the management of CSNSW.

In distinguishing between the current and any previous episode of imprisonment the following rules were applied:

- i. for inmates held in custody for breach of a parole or licence order relating to a previous period(s) of imprisonment, the previous period(s) of imprisonment is/are excluded from the current episode;
- ii. any period of imprisonment prior to a release from a court where the inmate was subsequently freed without having been returned to full-time custody within 1 day, was excluded from the current episode;
- iii. any period of imprisonment prior to a transfer into police custody where the inmate was subsequently freed without having been returned to full-time custody within 5 days, was excluded from the current episode;
- iv. any period of imprisonment prior to release on bail, on a bond or to immigration authorities was excluded from the current episode;
- v. any period of imprisonment prior to transfer to an institution other than a NSW correctional centre (including Kariong Juvenile Correctional Centre), a transitional centre or police/court complex operated by CSNSW was excluded from the current episode. For example, this excludes detention in a psychiatric hospital, juvenile or interstate correctional institution;
- vi. for inmates who had escaped from CSNSW custody and had been subsequently returned to custody, the episode of imprisonment current at the time of the escape was included in the current episode;
- vii. for inmates who have had their periodic detention order cancelled and were now serving the sentence by way of full-time imprisonment, or have been placed into full-time custody in relation to other offences, the

period of periodic detention imprisonment was excluded from the current episode;

- viii. for inmates returned to periodic detention (after a period of full-time imprisonment) to serve the remainder of an original sentence by way of periodic detention, the original episode of periodic detention (prior to full-time imprisonment) is included in the current episode.

(d) Aboriginality

An inmate is recorded as an Aboriginal or Torres Strait Islander (TSI) where they have identified as such (by self report) in any current or previous episode of imprisonment. Prior to 2002 the Aboriginal/TSI status of the inmate current at the time of the Census was recorded.

(e) Known prior imprisonment as an adult

For the purposes of this publication known prior imprisonment includes any episode of imprisonment within periodic detention or full-time custody within NSW. Prior imprisonment includes imprisonment under a court issued order within a police/court cell complexes managed by the CSNSW but excludes any period of detention managed by CSNSW as a police-bail refused detainee.

Prior to 1999, prior adult imprisonment was based simply on whether an inmate had any known episode of prior imprisonment as an adult in a gazetted correctional centre in NSW. A hierarchy of sub-categories of known prior imprisonment based on custodial program and legal status was introduced in 1999. In 2009 the hierarchy was revised to identify inmates having prior community based order(s) under CSNSW supervision within the population of inmates with no prior custodial imprisonment. Where there is more than one period of prior imprisonment of a particular sub-category, the highest sub-category is used. The sub-categories, from lowest to highest, are:

- i. no prior imprisonment or community-based order;
- ii. prior community based order but no prior imprisonment;
- iii. an episode of periodic detention;
- iv. an episode on remand in full-time custody;
- v. an episode in full-time custody for fine default;
- vi. an episode in full-time custody under sentence.

(f) English speaking status of country of birth

Country of birth classification is based on the Standard Australian Classification of Countries (SACC) Second Edition (Australian Bureau of

Statistics Catalogue No: 1269.0, ABS 2008). English speaking status of the country of birth is based on the 'Main English speaking countries' as identified in ABS publication *Australian Standard Classification of Countries for Social Statistics (ASCCSS) (ABS Catalogue No. 1269.0)*. The main English speaking countries comprise: Australia, Canada, New Zealand, Republic of Ireland, South Africa, United Kingdom (Channel Islands, England, Scotland, Wales and Northern Ireland) and the United States of America.

(g) Legal status

For the purpose of this publication, inmates have been classified to one of the following seven legal status categories:

- i. under sentence - no appeal;
- ii. awaiting result of appeal against conviction or sentence;
- iii. detained as a forensic/correctional patient;
- iv. unconvicted (awaiting court hearing/trial);
- v. awaiting deportation;
- vi. awaiting extradition to another jurisdiction; or
- vii. civil inmate (held in custody for an offence other than a criminal offence).

The previously reported category 'convicted but awaiting sentence' was removed from this publication in 2007 as this legal status is not able to be determined from available electronic records. Inmates with this status are now included as 'unconvicted' inmates. Inmates held as Police custody 'police-bail refused' detainees are recorded as unconvicted inmates.

(h) Type of sentence

This item relates to the aggregate sentence imposed (see explanatory note (m)).

The category 'Life sentence' is comprised of (a) persons sentenced to an 'existing life sentence' (as defined in Schedule 1 of the *Crimes (Sentencing Procedure) Act 1999*) who have either yet to have that sentence redetermined by the Supreme Court or have been prohibited from making further application (b) persons sentenced to an 'existing life sentence' who have had that sentence redetermined by the Supreme Court and the court has declined to set a specific term for the sentence but has set a non-parole period of a term of years (c) persons sentenced to 'natural life' following proclamation of the *Life Sentences Amendment Act, 1989* and (d) persons sentenced to 'Life' with/without a non-parole period under federal/interstate legislation.

The category 'Forensic patient' is comprised of persons identified as 'forensic patients' as defined under Section 42 of the *Mental Health (Forensic Provisions) Act 1990* which includes persons found not guilty by reason of

mental illness and persons found unfit to be tried. The category also includes persons convicted or held on remand for a criminal offence who are transferred from a correctional centre to a mental health facility managed by CSNSW as a 'correctional patient' under Section 55 of the *Act*. Prior to 2011 these persons were reported in Tables 1.3 and 2.3 as 'forensic patients – Type B'.

Full-time custody inmates (convicted or unconvicted) who have a current order for periodic detention are recorded as full-time custody inmates.

For other sentence types detailed in this publication sentences are described as either 'Sentence/Non-Parole' where a court imposed a non-parole period (i.e. that component of the sentence that must be served in custody) or as 'Sentence/Parole period declined' where the court did not impose a non-parole period.

A new fine enforcement system for NSW was introduced from 27 January 1998 under the *Fines Act 1996* and is based on a hierarchy of civil and non-custodial sanctions with imprisonment as a sanction of last resort. Since that time inmates whose sentence type is recorded as 'Fine default' were held only for reason of default on a commonwealth or interstate fine (i.e. there are no outstanding charges or current sentences). The last fine defaulter was received into CSNSW custody in August 2004.

(i) Level and State of court

This item represents the level and State of court at which (for sentenced inmates) the current sentence for the most serious offence was imposed. For unsentenced inmates, the court at which the order for detention for the most serious offence (see explanatory note (k) below) current at the time of the Census is used. Appeal courts were recorded only where such courts have altered the sentence term imposed for the most serious offence. Where the most serious offence was breach of parole, the court of conviction is shown as State Parole Authority (formerly the NSW Parole Board). Inmates only detained awaiting deportation are shown under 'Immigration Authority'.

The NSW Drug Court program commenced on 8 February 1999 as a non-custodial program for illicit drug dependant offenders charged with non-violent offences. Inmates shown with a court of 'Drug Court' are convicted offenders either (a) held in custody as unsentenced inmates by the Drug Court pending determination of or placement on their program, (b) in custody serving a 'sanction' for a breach of the Drug Court order or (c) had their program terminated and were subsequently ordered by the Drug Court to serve the original suspended sentence by imprisonment in full-time custody.

(j) Classification of offences

In this publication the classification of offences has been based on the Australian Standard Offence Classification (ASOC), 2008 (2nd edition) (ABS Catalogue No. 1234.0). A summary of the classification is given in Appendix 1.

The ASOC 2008 classification was introduced into this publication for the first time in 2009. In 2008 and 2007 the classification of offences was based on ASOC 1997 (1st edition). Prior to 2007, offences were classified according to the Second Revision of the New South Wales Classification of Offences and of Care and Protection Orders for Children (ANCO). An ASOC to ANCO concordance is provided as part of the ABS publication (see Appendix 4).

Under ASOC 2008 offences involving attempts, threats, intentions, and conspiracies are generally classified in the same subdivision as the actual offence, whereas under ASOC 1997, conspiracy offences (with the exception of conspiracy to murder) were classified to 'Division 13 - Public Order Offences'. In this publication both the ASOC division and subdivisions to which the most serious offence was classified have been reported.

Trends series (Section 5) have also been revised to concord with ASOC 2008. ASOC 1997 data for years 1989 to 2009 have been revised using the ASOC to ANCO concordance. Prior to 1989 offence data was not recorded at a level of detail which enabled a re-mapping to ASOC 2008. This data remains mapped to ASOC 1997, however, at the division level, differences between ASOC editions for these time periods are not expected to be significant.

Improved coding procedures for sentenced and unsentenced inmates whose most serious offence/charge fell within ASOC Division 16 - Miscellaneous Offences were introduced in 2012. Specifically these related to import / export regulations. Where possible, previous years results presented in trend series have been revised, however, caution should be exercised when comparing 2012 miscellaneous offence data with previous years.

(k) Most serious offence

Although an inmate may be held by CSNSW for a number of different offences, only the characteristics of the most serious of all offences in the current imprisonment episode is used in this publication. Generally, the most serious offence is selected as the offence for which the longest sentence was imposed for a single count, regardless of the possible result of any appeals. For the purpose of this calculation, offences where no sentence had been imposed at the time of the sentence (i.e. remand orders) are treated as having a sentence length of zero.

Where the longest sentence was imposed on more than one offence, the most serious offence was identified using the National Offence Index (NOI) associated with each ASOC (2008) group. In 2008, following the adoption of

ASOC (1997), the same methodology was used but was based on the NOI (1997). Prior to 2008 the offence with the lowest NSW ANCO code was selected as the most serious offence where the longest sentence was imposed on more than one offence. A table detailing historical trends in most serious offence based on ASOC division is provided in Section 5 (see Table 5.8).

(l) Federal offences

The identification of inmates with federal offence(s) is based on the federal status of all offences relating to the current imprisonment episode regardless of whether, at the time of the Census, a sentence had been imposed or had expired for that offence. Federal offences are identified by CSNSW staff using information recorded on court documents provided to the agency.

(m) Aggregate sentence

This item represents the longest period that a person may be detained under sentence in the current episode and includes any 'balance of sentence' terms. Pending charges that are likely to extend the aggregate sentence are ignored. In the case of an inmate serving the balance of a sentence after revocation of parole or licence, only the balance of the sentence is included, as distinct from publications previous to 1998 where the whole of the original sentence was included.

For the purpose of this publication, the aggregate sentence category 'Forensic patient' includes all persons with a legal status or sentence type of 'Forensic patient' regardless of any other sentence imposed during the current episode. The aggregate sentence length for 'Life' and certain 'Forensic patient' sentence types is indeterminate as the sentencing authority does not impose a sentence expiry date for these sentences (refer to explanatory note (h) above).

(n) Inmate security classification

Inmates in correctional centres are classified in accordance with the *Crimes (Administration of Sentences) Regulation 2001* (Clauses 22, 23 and 24), incorporating the classification system for female inmates introduced on 4 July 1997. Inmates held at the Compulsory Drug Treatment Centre are not classified according to the regulations and are shown separately. Security classification sub-categories for unsentenced inmates were introduced into this publication in 1999. In this publication the security classification current at the time of the Census is shown. It should be noted that some convicted inmates may have an 'unconvicted' inmate security classification if they were facing further and more serious charges or they had not been re-classified at the time of the Census.

Following abolition of period detention as a NSW sentencing option in October 2010 all periodic detainees were progressively transferred to Periodic detention Stage 2. Stage 2 detainees are not required to attend a periodic detention centre during each detention period, instead these detainees stay overnight in their own home and report to a work site or detention centre (as required) each detention period.

On summary sheets, Maximum security includes both convicted and unconvicted inmates classified as AA, A1, A2, E1 and Category 5 (females). Medium security includes both convicted and unconvicted inmates classified as B, E2 and Category 4 (Females). Minimum security includes both convicted and unconvicted inmates classified as C1, C2, C3, Category 1, 2 and 3 (females) and inmates held at the Compulsory Drug Treatment Centre.

(o) Statistical area of last known address

The statistical area of last known address reported in this publication is based on the self reported postcode of last known address at the time of the Census. Postcodes were mapped to the statistical areas within the *Australian Statistical Geographical Standard (ASGS)* (*Australian Bureau of Statistics Catalogue No: 1270.0, ABS 2011*). Previous publications were mapped to the *Australian Standard Geographical Classification (ASGC)* (*Catalogue No: 1216.0, ABS 2009*).

(p) Significant events

The following is a summary of legislative and operational changes enacted between 30 June 2012 and 30 June 2013 which may have had a significant impact on the size and characteristics of the NSW inmate population:

- Silverwater Correctional Centre was re-gazetted as part of Dawn de Loas Correctional Centre on 3 May 2013.
- The last inmates at the minimum security units of Grafton Correctional Centre were transferred on 12 July 2012.
- A number of the maximum security units at the Metropolitan Special Programs Centre were closed on 16 March 2013 and the management of other was transferred to Long Bay Hospital.
- The last detainees managed at Wollongong Periodic Detention Centre were transferred on 14 October 2012.

Symbols

- * represents percentage values of less than 0.05%

Section 1

ALL INMATES

- inmates held in gazetted correctional centres, transitional centres, police/court complexes and periodic detention centres in NSW

ALL INMATES Statistical Summary

3	Total persons					9928
	Gender			Male	9247	(93.1%)
				Female	681	(6.9%)
1	Aboriginality			Aboriginal/TSI	2318	(23.3%)
				Non-Aboriginal/TSI	7485	(75.4%)
				Unknown	125	(1.3%)
0	Age					
	Age group	Male	%	Female	%	Total %
	Under 18 ¹	21	0.2%	-	--	21 (0.2%)
	18 to 24	1691	18.3%	90	13.2%	1781 (17.9%)
	25 to 34	3209	34.7%	251	36.9%	3460 (34.9%)
	35 to 44	2461	26.6%	194	28.5%	2655 (26.7%)
	45 and over	1865	20.2%	146	21.4%	2011 (20.3%)
	1. Inmates under 18 years of age are held at Kariong Juvenile Correctional Centre.					
	Country of birth			Australian born	7432	(74.9%)
				Overseas born	2292	(23.1%)
				Unknown	204	(2.1%)
S	English speaking status of country of birth					
				Australian born	7432	(74.9%)
				Other English speaking	534	(5.4%)
				Non-English speaking	1760	(17.7%)
				Unknown	204	(2.1%)
U	Prior adult imprisonment (including remand)					
				Yes	7393	(74.5%)
				No	2535	(25.5%)
S	Maximum period of imprisonment					
				Unsentenced	2778	(28.0%)
				Periodic detention	8	(0.1%)
				Less than 2 years	2601	(26.2%)
				2 to less than 5 years	1568	(15.8%)
				5 to less than 20 years	2418	(24.4%)
				20 years +	388	(3.9%)
				Life/Forensic patient	167	(1.7%)
W	Inmate security classification					
	Security level	Convicted	%	Unconvicted	%	Total %
	Maximum	674	9.7%	986	33.2%	1660 16.7%
	Medium	1379	19.8%	1221	41.2%	2600 26.2%
	Minimum	4779	68.7%	482	16.2%	5261 53.0%
	Unclassified	121	1.7%	278	9.4%	399 4.0%
	Periodic detention	8	0.1%	-	-	8 0.1%
	Total	6961	100%	2967	100%	9928 100%
U						

Table 1.1 Demographic characteristics

	GENDER				TOTAL	
	Male		Female			
Age at Census date (years)						
Under 16 ¹	--	--	--	--	--	--
16 ¹	10	0.1%	--	--	10	0.1%
17 ¹	11	0.1%	--	--	11	0.1%
18	82	0.9%	6	0.9%	88	0.9%
19	167	1.8%	6	0.9%	173	1.7%
20	244	2.6%	7	1.0%	251	2.5%
21-22	596	6.4%	33	4.8%	629	6.3%
23-24	602	6.5%	38	5.6%	640	6.4%
25-29	1587	17.2%	114	16.7%	1701	17.1%
30-34	1622	17.5%	137	20.1%	1759	17.7%
35-39	1333	14.4%	99	14.5%	1432	14.4%
40-44	1128	12.2%	95	14.0%	1223	12.3%
45-49	737	8.0%	55	8.1%	792	8.0%
50-54	444	4.8%	41	6.0%	485	4.9%
55-59	293	3.2%	32	4.7%	325	3.3%
60-64	197	2.1%	10	1.5%	207	2.1%
65 +	194	2.1%	8	1.2%	202	2.0%
Aboriginality						
Aboriginal/Torres Strait Islander	2117	22.9%	201	29.5%	2318	23.3%
Non-Aboriginal	7023	75.9%	462	67.8%	7485	75.4%
Unknown	107	1.2%	18	2.6%	125	1.3%
Known prior imprisonment as an adult						
Known prior imprisonment	6922	74.9%	471	69.2%	7393	74.5%
- full-time custody (convicted)	5000	54.1%	303	44.5%	5303	53.4%
- full-time custody (fine only)	39	0.4%	2	0.3%	41	0.4%
- full-time custody (remand)	1878	20.3%	166	24.4%	2044	20.6%
- periodic detention	5	0.1%	--	--	5	0.1%
No prior imprisonment	2325	25.1%	210	30.8%	2535	25.5%
- prior community based order	427	4.6%	31	4.6%	458	4.6%
- no prior imprisonment or community order	1898	20.5%	179	26.3%	2077	20.9%
Marital status at reception						
Never married	5308	57.4%	330	48.5%	5638	56.8%
Married/de-facto	2700	29.2%	216	31.7%	2916	29.4%
Separated	247	2.7%	26	3.8%	273	2.7%
Divorced	353	3.8%	37	5.4%	390	3.9%
Widowed	45	0.5%	8	1.2%	53	0.5%
Unknown	594	6.4%	64	9.4%	658	6.6%
English speaking status of country of birth						
Australian born	6932	75.0%	498	73.1%	7430	74.8%
Other English speaking	490	5.3%	44	6.5%	534	5.4%
Non-English speaking	1644	17.8%	116	17.0%	1760	17.7%
Country of birth unknown	181	2.0%	23	3.4%	204	2.1%
TOTAL	9247	100.0%	681	100.0%	9928	100.0%

* Less than 0.05%

1. Inmates under 18 years of age are held at Kariiong Juvenile Correctional Centre.

Table 1.2 Legal status characteristics

	GENDER				TOTAL	
	Male		Female			
Legal status						
Under sentence - no appeal	6365	68.8%	431	63.3%	6796	68.5%
Appellant	257	2.8%	24	3.5%	281	2.8%
Forensic patient	72	0.8%	--	--	72	0.7%
Remand/trial ¹	2552	27.6%	226	33.2%	2778	28.0%
Awaiting deportation	--	--	--	--	--	--
Awaiting extradition	--	--	--	--	--	--
Civil inmate	1	*	--	--	1	*
Type of sentence						
Not under sentence	2552	27.6%	226	33.2%	2778	28.0%
Life	92	1.0%	3	0.4%	95	1.0%
Forensic patient	72	0.8%	--	--	72	0.7%
Sentence/Non Parole	5500	59.5%	357	52.4%	5857	59.0%
Sentence/Parole declined	1024	11.1%	94	13.8%	1118	11.3%
Fine default	--	--	--	--	--	--
Periodic (Sen/Non Parole)	1	*	--	--	1	*
Periodic (Sen/Parole declined)	6	0.1%	1	0.1%	7	0.1%
Level of Court of most serious offence						
Supreme	962	10.4%	59	8.7%	1021	10.3%
District	3751	40.6%	241	35.4%	3992	40.2%
Local	3601	38.9%	299	43.9%	3900	39.3%
Parole Board	758	8.2%	65	9.5%	823	8.3%
Drug Court	134	1.4%	17	2.5%	151	1.5%
Children's Court	40	0.4%	--	--	40	0.4%
Federal/Other	1	*	--	--	1	*
Immigration	--	--	--	--	--	--
State of Court of most serious offence						
New South Wales	9226	99.8%	678	99.6%	9904	99.8%
Victoria	5	0.1%	--	--	5	0.1%
Queensland	6	0.1%	--	--	6	0.1%
South Australia	2	*	--	--	2	*
Western Australia	6	0.1%	3	0.4%	9	0.1%
Tasmania	--	--	--	--	--	--
Northern Territory	--	--	--	--	--	--
Australian Capital Territory	1	*	--	--	1	*
Overseas	1	*	--	--	1	*
TOTAL	9247	100.0%	681	100.0%	9928	100.0%

* Less than 0.05%

1. Remand/trial includes awaiting sentence - see explanatory note (g).

Table 1.3 Characteristics of offences and sentences

	GENDER				TOTAL	
	Male		Female			
Most serious offence (MSO) ¹						
Homicide and related offences	796	8.6%	59	8.7%	855	8.6%
Murder	552	6.0%	37	5.4%	589	5.9%
Attempted murder	98	1.1%	6	0.9%	104	1.0%
Manslaughter and driving causing death	146	1.6%	16	2.3%	162	1.6%
Acts intended to cause injury	1765	19.1%	110	16.2%	1875	18.9%
Assault	1630	17.6%	105	15.4%	1735	17.5%
Other acts intended to cause injury	135	1.5%	5	0.7%	140	1.4%
Sexual assault and related offences	994	10.7%	17	2.5%	1011	10.2%
Sexual assault	886	9.6%	13	1.9%	899	9.1%
Non-assaultive sexual offences	108	1.2%	4	0.6%	112	1.1%
Dangerous or negligent acts endang. persons	218	2.4%	9	1.3%	227	2.3%
Dangerous or negligent operation of vehicle	186	2.0%	8	1.2%	194	2.0%
Other dangerous or negligent acts	32	0.3%	1	0.1%	33	0.3%
Abduction, harassment and other offences	162	1.8%	14	2.1%	176	1.8%
Abduction and kidnapping	107	1.2%	12	1.8%	119	1.2%
Deprivation of liberty / false imprisonment	14	0.2%	1	0.1%	15	0.2%
Harassment and threatening behaviour	41	0.4%	1	0.1%	42	0.4%
Robbery, extortion and related offences	997	10.8%	34	5.0%	1031	10.4%
Robbery	996	10.8%	34	5.0%	1030	10.4%
Blackmail and extortion	1	*	--	--	1	*
Unlawful entry with intent/burglary, B&E	843	9.1%	40	5.9%	883	8.9%
Theft and related offences	349	3.8%	69	10.1%	418	4.2%
Motor vehicle theft and related offences	69	0.7%	7	1.0%	76	0.8%
Theft (except motor vehicles)	166	1.8%	49	7.2%	215	2.2%
Receive or handle proceeds of crime	114	1.2%	13	1.9%	127	1.3%
Fraud, deception and related offences	174	1.9%	48	7.0%	222	2.2%
Obtain benefit by deception	126	1.4%	43	6.3%	169	1.7%
Forgery and counterfeiting	5	0.1%	--	--	5	0.1%
Deceptive business/government practices	10	0.1%	1	0.1%	11	0.1%
Other fraud and deception offences	33	0.4%	4	0.6%	37	0.4%
Illicit drug offences	1412	15.3%	164	24.1%	1576	15.9%
Import or export illicit drugs	305	3.3%	63	9.3%	368	3.7%
Deal or traffic in illicit drugs	932	10.1%	88	12.9%	1020	10.3%
Manufacture or cultivate illicit drugs	145	1.6%	6	0.9%	151	1.5%
Possess and/or use illicit drugs	30	0.3%	6	0.9%	36	0.4%
Other illicit drug offences	--	--	1	0.1%	1	*
Prohibited and regulated weapons etc.	139	1.5%	5	0.7%	144	1.5%
Prohibited weapons/explosives	52	0.6%	--	--	52	0.5%
Regulated weapons/explosives	87	0.9%	5	0.7%	92	0.9%
Property damage and environmental pollution	84	0.9%	2	0.3%	86	0.9%
Public order offences	85	0.9%	3	0.4%	88	0.9%
Disorderly conduct	69	0.7%	2	0.3%	71	0.7%
Regulated public order offences	14	0.2%	--	--	14	0.1%
Offensive conduct	2	*	1	0.1%	3	*
Traffic and vehicle regulatory offences	232	2.5%	21	3.1%	253	2.5%
Driving licence offences	181	2.0%	19	2.8%	200	2.0%
Road vehicle registration and roadworthiness	--	--	--	--	--	--
Regulatory driving offences	51	0.6%	2	0.3%	53	0.5%
Pedestrian offences	--	--	--	--	--	--
Offences against justice procedures etc.	954	10.3%	81	11.9%	1035	10.4%
Breach of custodial order offences	16	0.2%	1	0.1%	17	0.2%
Breach of community-based orders	776	8.4%	68	10.0%	844	8.5%
Breach of violence and non-violence orders	66	0.7%	5	0.7%	71	0.7%
Offences against government operations	30	0.3%	--	--	30	0.3%
Offences against government security	9	0.1%	--	--	9	0.1%
Offences against justice procedures	57	0.6%	7	1.0%	64	0.6%
Miscellaneous offences	43	0.5%	5	0.7%	48	0.5%
TOTAL	9247	100.0%	681	100.0%	9928	100.0%

* Less than 0.05%

1. Offences classified under Australian Standard Offence Classification 2008 - see explanatory note (j).

Table 1.3 Characteristics of offences and sentences (continued)

	GENDER				TOTAL	
	Male		Female			
Length of aggregate sentence						
Not under sentence	2552	27.6%	226	33.2%	2778	28.0%
1 - 7 days	1	*	--	--	1	*
8 - < 1 month	6	0.1%	1	0.1%	7	0.1%
1 month - < 3 months	71	0.8%	14	2.1%	85	0.9%
3 months - < 6 months	243	2.6%	26	3.8%	269	2.7%
6 months - < 9 months	327	3.5%	38	5.6%	365	3.7%
9 months - < 1 year	547	5.9%	58	8.5%	605	6.1%
1 - < 2 years	1184	12.8%	85	12.5%	1269	12.8%
2 - < 5 years	1475	16.0%	93	13.7%	1568	15.8%
5 - < 7 years	682	7.4%	45	6.6%	727	7.3%
7 - < 10 years	793	8.6%	37	5.4%	830	8.4%
10 - < 15 years	583	6.3%	22	3.2%	605	6.1%
15 - < 20 years	244	2.6%	12	1.8%	256	2.6%
20 years +	368	4.0%	20	2.9%	388	3.9%
Life	92	1.0%	3	0.4%	95	1.0%
Forensic patient	72	0.8%	--	--	72	0.7%
Periodic detention	7	0.1%	1	0.1%	8	0.1%
Indeterminate sentences - Life sentence and Forensic patients						
Not Life or Forensic/correctional patient	9083	98.2%	678	99.6%	9761	98.3%
Life 'Natural Life'	42	0.5%	2	0.3%	44	0.4%
Life - yet to be redetermined	9	0.1%	--	--	9	0.1%
Life / Non Parole period	38	0.4%	1	0.1%	39	0.4%
Life - Breach of parole/licence	1	*	--	--	1	*
Life (ACT)	--	--	--	--	--	--
Life (Federal)	2	*	--	--	2	*
Forensic patient - Indeterminate term	31	0.3%	--	--	31	0.3%
Forensic patient - Limiting term	21	0.2%	--	--	21	0.2%
Correctional patient ¹ - under sentence	9	0.1%	--	--	9	0.1%
Correctional patient ¹ - unsentenced	11	0.1%	--	--	11	0.1%
Is any offence a federal offence ?						
Yes	492	5.3%	61	9.0%	553	5.6%
No	8755	94.7%	620	91.0%	9375	94.4%
Is the most serious offence a federal offence ?						
Yes	406	4.4%	57	8.4%	463	4.7%
No	8841	95.6%	624	91.6%	9465	95.3%
TOTAL	9247	100.0%	681	100.0%	9928	100.0%

* less than 0.05%.

1. See explanatory note (h).

Table 1.3 Characteristics of offences and sentences (continued)

	GENDER				TOTAL	
	Male		Female			
Is the inmate serving a term for breach of parole, licence or escape ?						
Not breach of parole/licence or escapee	7606	82.3%	585	85.9%	8191	82.5%
Breach of parole	1601	17.3%	96	14.1%	1697	17.1%
Breach of licence	--	--	--	--	--	--
Escape	29	0.3%	--	--	29	0.3%
Breach of parole and escape	11	0.1%	--	--	11	0.1%
Are there any other offences for inmates whose MSO is breach of parole/licence ?						
MSO not breach of parole/licence	8552	92.5%	620	91.0%	9172	92.4%
No other offence (excludes fines)	242	2.6%	22	3.2%	264	2.7%
Remand for other offence(s)	289	3.1%	25	3.7%	314	3.2%
Convicted for other offence(s)	164	1.8%	14	2.1%	178	1.8%
Is the inmate in full-time custody having breached an order (other than parole/licence)?						
In full-time - no breach	9220	99.7%	678	99.6%	9898	99.7%
Sentenced - breach of periodic detention	16	0.2%	2	0.3%	18	0.2%
Sentenced - breach of home detention	4	*	--	--	4	*
Remanded - breach of periodic detention	--	--	--	--	--	--
Remanded - breach home detention	--	--	--	--	--	--
Periodic Detention	7	0.1%	1	0.1%	8	0.1%
Has there been an episode in full-time (FT) custody since commencing periodic detention?						
Currently in full-time custody	9240	99.9%	680	99.9%	9920	99.9%
In periodic detention - no FT episode	7	0.1%	1	0.1%	8	0.1%
In periodic detention - at least one FT episode	--	--	--	--	--	--
Time to serve to earliest date of release (EDR)						
Unsentenced	2552	27.6%	226	33.2%	2778	28.0%
Earliest date of release lapsed	249	2.7%	2	0.3%	251	2.5%
< 3 months	1376	14.9%	150	22.0%	1526	15.4%
3 - < 6 months	1120	12.1%	86	12.6%	1206	12.1%
6 - < 12 months	1224	13.2%	74	10.9%	1298	13.1%
1 - < 2 years	1077	11.6%	65	9.5%	1142	11.5%
2 - < 5 years	943	10.2%	44	6.5%	987	9.9%
5 years +	542	5.9%	31	4.6%	573	5.8%
Indeterminate (Life/forensic patient) ¹	164	1.8%	3	0.4%	167	1.7%
TOTAL	9247	100.0%	681	100.0%	9928	100.0%

1. Includes all inmates with a type of sentence of Life or Forensic patient regardless of whether an earliest date of release exists for that inmate.

Table 1.4 Inmate security classification

	GENDER				TOTAL	
	Male		Female			
Security classification of inmate ¹						
Maximum security classification						
Maximum security - Convicted	674	7.3%	--	--	674	6.8%
AA	6	0.1%	--	--	6	0.1%
A1	22	0.2%	--	--	22	0.2%
A2	554	6.0%	--	--	554	5.6%
E1	92	1.0%	--	--	92	0.9%
Category 5 (Female)	--	--	--	--	--	--
Maximum security - Unconvicted	986	10.7%	--	--	986	9.9%
Unconvicted AA	1	*	--	--	1	*
Unconvicted A1	--	--	--	--	--	--
Unconvicted A2	955	10.3%	--	--	955	9.6%
Unconvicted E1	30	0.3%	--	--	30	0.3%
Sub-total Maximum security	1660	18.0%	--	--	1660	16.7%
Medium security classification						
Medium security - Convicted	1337	14.5%	42	6.2%	1379	13.9%
B	1016	11.0%	--	--	1016	10.2%
E2	321	3.5%	14	2.1%	335	3.4%
Category 4 (Female)	--	--	28	4.1%	28	0.3%
Medium security - Unconvicted	1152	12.5%	69	10.1%	1221	12.3%
Unconvicted B	1057	11.4%	--	--	1057	10.6%
Unconvicted E2	95	1.0%	8	1.2%	103	1.0%
Unconvicted Category 4 (Female)	--	--	61	9.0%	61	0.6%
Sub-total Medium security	2489	26.9%	111	16.3%	2600	26.2%
Minimum security classification						
Minimum security - Convicted	4385	47.4%	394	57.9%	4779	48.1%
C1	1384	15.0%	--	--	1384	13.9%
C2	2553	27.6%	--	--	2553	25.7%
C3	411	4.4%	--	--	411	4.1%
Compulsory Drug Treatment Centre	37	0.4%	--	--	37	0.4%
Category 3 (Female)	--	--	57	8.4%	57	0.6%
Category 2 (Female)	--	--	287	42.1%	287	2.9%
Category 1 (Female)	--	--	50	7.3%	50	0.5%
Minimum security - Unconvicted	352	3.8%	130	19.1%	482	4.9%
Unconvicted C1	352	3.8%	--	--	352	3.5%
Unconvicted Category 3 (Female)	--	--	59	8.7%	59	0.6%
Unconvicted Category 2 (Female)	--	--	71	10.4%	71	0.7%
Sub-total Minimum	4737	51.2%	524	76.9%	5261	53.0%
Unclassified						
Unclassified - convicted	108	1.2%	13	1.9%	121	1.2%
Unclassified - unconvicted	246	2.7%	32	4.7%	278	2.8%
Sub-total Unclassified	354	3.8%	45	6.6%	399	4.0%
Periodic Detention						
Periodic detainee - Stage 1	--	--	--	--	--	--
Periodic detainee - Stage 2	7	0.1%	1	0.1%	8	0.1%
Sub-total Periodic detention	7	0.1%	1	0.1%	8	0.1%
TOTAL	9247	100.0%	681	100.0%	9928	100.0%

1. Some convicted inmates may have an "unconvicted" inmate classification if they were facing further and more serious charges or had not been re-classified at the time of the census. Therefore the total number of inmates with "convicted" inmate classifications may not be equal to the total number of convicted inmates.

Table 1.5 Location and correctional centre security classification

	GENDER				TOTAL	
	Male		Female			
Correctional centre by security rating						
Maximum security						
Cessnock (Maximum)	230	2.5%	--	--	230	2.3%
Goulburn (Maximum)	441	4.8%	--	--	441	4.4%
High Risk Management	32	0.3%	--	--	32	0.3%
Lithgow	328	3.5%	--	--	328	3.3%
Long Bay Hospital	369	4.0%	1	0.1%	370	3.7%
Metro. Special Programs (Maximum)	36	0.4%	--	--	36	0.4%
Metropolitan Remand and Reception	892	9.6%	--	--	892	9.0%
Parklea (Maximum)	738	8.0%	--	--	738	7.4%
Silverwater Women's	--	--	207	30.4%	207	2.1%
South Coast (Maximum)	332	3.6%	1	0.1%	333	3.4%
Special Purpose Centre (Maximum)	48	0.5%	--	--	48	0.5%
Wellington (Maximum)	347	3.8%	--	--	347	3.5%
Sub-total Maximum security	3793	41.0%	209	30.7%	4002	40.3%
Medium security						
Bathurst (Medium)	402	4.3%	2	0.3%	404	4.1%
Broken Hill (Medium)	37	0.4%	--	--	37	0.4%
Cooma	149	1.6%	--	--	149	1.5%
Dillwynia (Medium)	--	--	158	23.2%	158	1.6%
Grafton (Medium)	38	0.4%	3	0.4%	41	0.4%
John Morony (Medium)	254	2.7%	--	--	254	2.6%
Junee (Medium)	627	6.8%	1	0.1%	628	6.3%
Kariong (Juvenile)	31	0.3%	--	--	31	0.3%
Mid-North Coast (Medium)	364	3.9%	--	--	364	3.7%
Tamworth (Medium)	49	0.5%	--	--	49	0.5%
Sub-total Medium security	1951	21.1%	164	24.1%	2115	21.3%
Minimum security						
Bathurst (Minimum)	177	1.9%	--	--	177	1.8%
Brewarrina (Yetta Dhinnakkal)	27	0.3%	--	--	27	0.3%
Broken Hill (Minimum)	25	0.3%	5	0.7%	30	0.3%
Cessnock (Minimum)	439	4.7%	--	--	439	4.4%
Compulsory Drug Treatment	32	0.3%	--	--	32	0.3%
Dawn de Loas	507	5.5%	--	--	507	5.1%
Dillwynia (Minimum)	--	--	21	3.1%	21	0.2%
Emu Plains	--	--	172	25.3%	172	1.7%
Glen Innes	139	1.5%	--	--	139	1.4%
Goulburn (Minimum)	102	1.1%	--	--	102	1.0%
Ivanhoe (Warakirri)	22	0.2%	--	--	22	0.2%
Junee (Minimum)	140	1.5%	--	--	140	1.4%
Mannus	153	1.7%	--	--	153	1.5%
Metro. Special Programs (Minimum)	545	5.9%	--	--	545	5.5%
Mid-North Coast (Minimum)	109	1.2%	42	6.2%	151	1.5%
Oberon	116	1.3%	--	--	116	1.2%
Outer Metropolitan Multi-Purpose	237	2.6%	--	--	237	2.4%
Parklea (Minimum)	76	0.8%	--	--	76	0.8%
South Coast (Minimum)	210	2.3%	--	--	210	2.1%
St. Heliers	280	3.0%	--	--	280	2.8%
Tamworth (Minimum)	23	0.2%	--	--	23	0.2%
Wellington (Minimum)	84	0.9%	42	6.2%	126	1.3%
Sub-total Minimum security	3443	37.2%	282	41.4%	3725	37.5%
Sub-total Correctional Centres	9187	99.4%	655	96.2%	9842	99.1%

Table 1.5 Location and correctional centre security classification (continued)

	GENDER				TOTAL	
	Male		Female			
Transitional Centres						
Bolwara House Transitional Centres	--	--	10	1.5%	10	0.1%
Parramatta Transitional Centre	--	--	10	1.5%	10	0.1%
Sub-total Transitional Centres	--	--	20	2.9%	20	0.2%
Court/Police Cell Complexes						
Albury	1	*	--	--	1	*
Batesman Bay	1	*	--	--	1	*
Campbelltown	1	*	1	0.1%	2	*
Dubbo	--	--	--	--	--	--
Lismore	5	0.1%	--	--	5	0.1%
Moree	2	*	--	--	2	*
Newcastle	1	*	--	--	1	*
Parramatta	1	*	2	0.3%	3	*
Penrith	3	*	2	0.3%	5	0.1%
Port Macquarie	1	*	--	--	1	*
Queanbeyan	--	--	--	--	--	--
Surry Hills (Sydney)	31	0.3%	--	--	31	0.3%
Wagga Wagga	1	*	--	--	1	*
Wollongong	5	0.1%	--	--	5	0.1%
Sub-total Court/Police Cell Complexes	53	0.6%	5	0.7%	58	0.6%
Periodic detention centres						
Periodic Detention Administration	5	0.1%	1	0.1%	6	0.1%
Silverwater PDC (Stage 2)	2	*	--	--	2	*
Sub-total Periodic detention	7	0.1%	1	0.1%	8	0.1%
TOTAL	9247	100.0%	681	100.0%	9928	100.0%

* less than 0.05%

Table 1.6 Country of birth

Country of birth	GENDER				TOTAL	
	Male		Female			
OCEANIA AND ANTARCTICA						
AUSTRALIA (incl. ext. territories)	6934	75.0%	498	73.1%	7432	74.9%
- New South Wales	5704	61.7%	401	58.9%	6105	61.5%
- Victoria	226	2.4%	15	2.2%	241	2.4%
- Queensland	254	2.7%	12	1.8%	266	2.7%
- South Australia	63	0.7%	6	0.9%	69	0.7%
- Western Australia	33	0.4%	6	0.9%	39	0.4%
- Tasmania	37	0.4%	3	0.4%	40	0.4%
- Northern Territory	18	0.2%	1	0.1%	19	0.2%
- Australian Capital Territory	54	0.6%	2	0.3%	56	0.6%
- Australian External Territories	--	--	--	--	--	--
- Australia (not further defined)	545	5.9%	52	7.6%	597	6.0%
- Norfolk Island	--	--	--	--	--	--
NEW ZEALAND	283	3.1%	23	3.4%	306	3.1%
MELANESIA	12	0.1%	--	--	12	0.1%
- New Caledonia	--	--	--	--	--	--
- Papua New Guinea	10	0.1%	--	--	10	0.1%
- Solomon Islands	1	*	--	--	1	*
- Vanuatu	1	*	--	--	1	*
MICRONESIA	--	--	--	--	--	--
POLYNESIA (excl. Hawaii)	148	1.6%	7	1.0%	155	1.6%
- Cook Islands	10	0.1%	--	--	10	0.1%
- Fiji	75	0.8%	6	0.9%	81	0.8%
- Samoa	41	0.4%	--	--	41	0.4%
- Samoa American	--	--	--	--	--	--
- Tonga	22	0.2%	1	0.1%	23	0.2%
- Tuvalu	--	--	--	--	--	--
Sub-total						
OCEANIA AND ANTARCTICA	7377	79.8%	528	77.5%	7905	79.6%
NORTH-WEST EUROPE						
UNITED KINGDOM	121	1.3%	9	1.3%	130	1.3%
- England	101	1.1%	8	1.2%	109	1.1%
- Isle of Man	--	--	--	--	--	--
- Northern Ireland	2	*	--	--	2	*
- Scotland	17	0.2%	1	0.1%	18	0.2%
- Wales	1	*	--	--	1	*
IRELAND	17	0.2%	1	0.1%	18	0.2%
WESTERN EUROPE	44	0.5%	2	0.3%	46	0.5%
- Austria	12	0.1%	--	--	12	0.1%
- Belgium	5	0.1%	--	--	5	0.1%
- France	5	0.1%	--	--	5	0.1%
- Germany	13	0.1%	2	0.3%	15	0.2%
- Monaco	1	*	--	--	1	*
- Netherlands	8	0.1%	--	--	8	0.1%
- Switzerland	--	--	--	--	--	--
NORTHERN EUROPE	4	*	--	--	4	*
- Denmark	--	--	--	--	--	--
- Finland	3	*	--	--	3	*
- Sweden	1	*	--	--	1	*
Sub-total						
NORTH-WEST EUROPE	186	2.0%	12	1.8%	198	2.0%

* Less than 0.05%

Table 1.6 Country of birth (continued)

Country of birth (continued)	GENDER				TOTAL	
	Male		Female			
SOUTHERN AND EASTERN EUROPE						
SOUTHERN EUROPE	51	0.6%	1	0.1%	52	0.5%
- Italy	27	0.3%	--	--	27	0.3%
- Malta	7	0.1%	--	--	7	0.1%
- Portugal	9	0.1%	--	--	9	0.1%
- Spain	8	0.1%	1	0.1%	9	0.1%
SOUTH EASTERN EUROPE	109	1.2%	1	0.1%	110	1.1%
- Albania	4	*	--	--	4	*
- Bosnia-Herzegovina	7	0.1%	--	--	7	0.1%
- Bulgaria	1	*	--	--	1	*
- Croatia	15	0.2%	--	--	15	0.2%
- Cyprus	8	0.1%	--	--	8	0.1%
- Fmr Yugoslav Rep. of Macedonia	28	0.3%	1	0.1%	29	0.3%
- Greece	19	0.2%	--	--	19	0.2%
- Montenegro	1	*	--	--	1	*
- Romania	16	0.2%	--	--	16	0.2%
- Serbia	10	0.1%	--	--	10	0.1%
- Slovenia	--	--	--	--	--	--
EASTERN EUROPE	22	0.2%	3	0.4%	25	0.3%
- Belarus	--	--	--	--	--	--
- Czech Republic	3	*	--	--	3	*
- Hungary	5	0.1%	--	--	5	0.1%
- Latvia	--	--	--	--	--	--
- Lithuania	3	*	--	--	3	*
- Poland	4	*	1	0.1%	5	0.1%
- Russian Federation	6	0.1%	--	--	6	0.1%
- Ukraine	1	*	2	0.3%	3	*
Sub-total						
SOUTHERN AND EASTERN EUROPE	182	2.0%	5	0.7%	187	1.9%
NORTH AFRICA AND THE MIDDLE EAST						
NORTH AFRICA	53	0.6%	1	0.1%	54	0.5%
- Algeria	2	*	--	--	2	*
- Egypt	18	0.2%	--	--	18	0.2%
- Libya	1	*	--	--	1	*
- Morocco	2	*	--	--	2	*
- Sudan	30	0.3%	1	0.1%	31	0.3%
- Western Sahara	--	--	--	--	--	--
MIDDLE EAST	291	3.1%	5	0.7%	296	3.0%
- Gaza Strip and West Bank	--	--	--	--	--	--
- Iran	28	0.3%	--	--	28	0.3%
- Iraq	58	0.6%	2	0.3%	60	0.6%
- Israel	5	0.1%	--	--	5	0.1%
- Jordan	7	0.1%	--	--	7	0.1%
- Kuwait	3	*	1	0.1%	4	*
- Lebanon	149	1.6%	2	0.3%	151	1.5%
- Saudi Arabia	3	*	--	--	3	*
- Syria	6	0.1%	--	--	6	0.1%
- Turkey	30	0.3%	--	--	30	0.3%
- United Arab Emirates	2	*	--	--	2	*
Sub-total						
NORTH AFRICA AND THE MIDDLE EAST	344	3.7%	6	0.9%	350	3.5%

* Less than 0.05%

Table 1.6 Country of birth (continued)

Country of birth (continued)	GENDER				TOTAL	
	Male		Female			
SOUTH-EAST ASIA						
MAINLAND SOUTH-EAST ASIA	324	3.5%	58	8.5%	382	3.8%
- Burma (Myanmar)	4	*	--	--	4	*
- Cambodia	24	0.3%	5	0.7%	29	0.3%
- Laos	19	0.2%	1	0.1%	20	0.2%
- Thailand	30	0.3%	4	0.6%	34	0.3%
- Viet Nam	247	2.7%	48	7.0%	295	3.0%
MARITIME SOUTH-EAST ASIA	144	1.6%	15	2.2%	159	1.6%
- Brunei Darussalam	--	--	--	--	--	--
- Indonesia	39	0.4%	--	--	39	0.4%
- Malaysia	24	0.3%	6	0.9%	30	0.3%
- Philippines	61	0.7%	8	1.2%	69	0.7%
- Singapore	19	0.2%	1	0.1%	20	0.2%
- East Timor	1	*	--	--	1	*
Sub-total	468	5.1%	73	10.7%	541	5.4%
SOUTHEAST ASIA						
NORTH-EAST ASIA						
CHINESE ASIA (incl. Mongolia)	169	1.8%	17	2.5%	186	1.9%
- China (excl. SAR's and Taiwan)	123	1.3%	14	2.1%	137	1.4%
- Hong Kong (SAR of China)	38	0.4%	3	0.4%	41	0.4%
- Macau	1	*	--	--	1	*
- Mongolia	--	--	--	--	--	--
- Taiwan	7	0.1%	--	--	7	0.1%
JAPAN AND THE KOREAS	35	0.4%	--	--	35	0.4%
- Japan	4	*	--	--	4	*
- Korea, Democratic People's Republic of (North)	1	*	--	--	1	*
- Korea, Republic of (South)	30	0.3%	--	--	30	0.3%
Sub-total	204	2.2%	17	2.5%	221	2.2%
SOUTHERN AND CENTRAL ASIA						
SOUTHERN ASIA	74	0.8%	1	0.1%	75	0.8%
- Bangladesh	8	0.1%	--	--	8	0.1%
- India	37	0.4%	1	0.1%	38	0.4%
- Nepal	2	*	--	--	2	*
- Pakistan	13	0.1%	--	--	13	0.1%
- Sri Lanka	14	0.2%	--	--	14	0.1%
CENTRAL ASIA	25	0.3%	--	--	25	0.3%
- Afghanistan	25	0.3%	--	--	25	0.3%
- Armenia	--	--	--	--	--	--
- Kazakhstan	--	--	--	--	--	--
Sub-total	99	1.1%	1	0.1%	100	1.0%
AMERICAS						
NORTHERN AMERICA	46	0.5%	9	1.3%	55	0.6%
- Bermuda	--	--	--	--	--	--
- Canada	22	0.2%	6	0.9%	28	0.3%
- United States of America	24	0.3%	3	0.4%	27	0.3%

* Less than 0.05%

Table 1.6 Country of birth (continued)

Country of birth (continued)	GENDER				TOTAL	
	Male		Female			
AMERICAS (continued)						
SOUTH AMERICA	60	0.6%	3	0.4%	63	0.6%
- Argentina	7	0.1%	--	--	7	0.1%
- Bolivia	1	*	--	--	1	*
- Brazil	4	*	--	--	4	*
- Chile	15	0.2%	1	0.1%	16	0.2%
- Colombia	18	0.2%	1	0.1%	19	0.2%
- Ecuador	2	*	--	--	2	*
- Peru	6	0.1%	--	--	6	0.1%
- Uruguay	7	0.1%	1	0.1%	8	0.1%
CENTRAL AMERICA	19	0.2%	--	--	19	0.2%
- El Salvador	7	0.1%	--	--	7	0.1%
- Guatemala	--	--	--	--	--	--
- Mexico	8	0.1%	--	--	8	0.1%
- Nicaragua	4	*	--	--	4	*
CARIBBEAN	3	*	1	0.1%	4	*
- Cuba	1	*	--	--	1	*
- Jamaica	2	*	1	0.1%	3	*
Sub-total AMERICAS	128	1.4%	13	1.9%	141	1.4%
SUB-SAHARAN AFRICA						
CENTRAL & WEST AFRICA	33	0.4%	--	--	33	0.3%
- Benin	1	*	--	--	1	*
- Congo	2	*	--	--	2	*
- Gambia	--	--	--	--	--	--
- Ghana	--	--	--	--	--	--
- Mauritania	--	--	--	--	--	--
- Niger	--	--	--	--	--	--
- Nigeria	26	0.3%	--	--	26	0.3%
- Senegal	--	--	--	--	--	--
- Sierra Leone	4	*	--	--	4	*
SOUTHERN & EAST AFRICA	47	0.5%	3	0.4%	50	0.5%
- Angola	1	*	--	--	1	*
- Botswana	--	--	--	--	--	--
- Ethiopia	4	*	--	--	4	*
- Kenya	4	*	--	--	4	*
- Malawi	--	--	--	--	--	--
- Mauritius	3	*	--	--	3	*
- Somalia	--	--	--	--	--	--
- South Africa	23	0.2%	2	0.3%	25	0.3%
- Tanzania	2	*	1	0.1%	3	*
- Uganda	--	--	--	--	--	--
- Zambia	--	--	--	--	--	--
- Zimbabwe	5	0.1%	--	--	5	0.1%
- Southern & East Africa (nec)	5	0.1%	--	--	5	0.1%
Sub-total SUB-SAHARAN AFRICA	80	0.9%	3	0.4%	83	0.8%
UNKNOWN	179	1.9%	23	3.4%	202	2.0%
TOTAL	9247	100.0%	681	100.0%	9928	100.0%

* Less than 0.05%

nec - not elsewhere classified

Table 1.7 Statistical area of last known address

Statistical area (Level 4)	GENDER				TOTAL	
	Male		Female			
New South Wales						
Capital Region	228	2.5%	20	2.9%	248	2.5%
Central Coast	347	3.8%	26	3.8%	373	3.8%
Central West	248	2.7%	32	4.7%	280	2.8%
Coffs Harbour - Grafton	164	1.8%	10	1.5%	174	1.8%
Far West and Orana	326	3.5%	19	2.8%	345	3.5%
Hunter Valley exc Newcastle	288	3.1%	30	4.4%	318	3.2%
Illawarra	381	4.1%	25	3.7%	406	4.1%
Mid North Coast	332	3.6%	25	3.7%	357	3.6%
Murray	116	1.3%	5	0.7%	121	1.2%
New England and North West	343	3.7%	17	2.5%	360	3.6%
Newcastle and Lake Macquarie	433	4.7%	37	5.4%	470	4.7%
Richmond - Tweed	239	2.6%	15	2.2%	254	2.6%
Riverina	209	2.3%	9	1.3%	218	2.2%
Southern Highlands and Shoalhaven	156	1.7%	9	1.3%	165	1.7%
Sydney - Baulkham Hills and Hawkesbury	59	0.6%	3	0.4%	62	0.6%
Sydney - Blacktown	525	5.7%	29	4.3%	554	5.6%
Sydney - City and Inner South	590	6.4%	62	9.1%	652	6.6%
Sydney - Eastern Suburbs	218	2.4%	11	1.6%	229	2.3%
Sydney - Inner South West	760	8.2%	52	7.6%	812	8.2%
Sydney - Inner West	212	2.3%	17	2.5%	229	2.3%
Sydney - North Sydney and Hornsby	102	1.1%	1	0.1%	103	1.0%
Sydney - Northern Beaches	93	1.0%	8	1.2%	101	1.0%
Sydney - Outer South West	451	4.9%	23	3.4%	474	4.8%
Sydney - Outer West and Blue Mountains	341	3.7%	23	3.4%	364	3.7%
Sydney - Parramatta	593	6.4%	38	5.6%	631	6.4%
Sydney - Ryde	56	0.6%	10	1.5%	66	0.7%
Sydney - South West	679	7.3%	58	8.5%	737	7.4%
Sydney - Sutherland	139	1.5%	19	2.8%	158	1.6%
Sub-total New South Wales	8628	93.3%	633	93.0%	9261	93.3%
Victoria	47	0.5%	3	0.4%	50	0.5%
Queensland	75	0.8%	6	0.9%	81	0.8%
South Australia	7	0.1%	--	--	7	0.1%
Western Australia	6	0.1%	--	--	6	0.1%
Tasmania	--	--	--	--	--	--
Northern Territory	1	*	--	--	1	*
Australian Capital Territory	7	0.1%	--	--	7	0.1%
Sub-total other states/territories	143	1.5%	9	1.3%	152	1.5%
No fixed abode	126	1.4%	2	0.3%	128	1.3%
Overseas	64	0.7%	9	1.3%	73	0.7%
Unknown	286	3.1%	28	4.1%	314	3.2%
TOTAL	9247	100.0%	681	100.0%	9928	100.0%

Section 2

FULL-TIME CUSTODY INMATES

- inmates held in gazetted
correctional centres, transitional
centres and police/court complexes
in NSW

FULL-TIME CUSTODY INMATES Statistical Summary

3	Total persons					9920
	Gender					
		Male				9240 (93.1%)
		Female				680 (6.9%)
1	Aboriginality					
		Aboriginal/TSI				2316 (23.3%)
		Non-Aboriginal/TSI				7479 (75.4%)
		Unknown				125 (1.3%)
0	Age					
	Age group	Male	%	Female	%	Total %
	Under 18 ¹	21	0.2%	-	--	21 (0.2%)
	18 to 24	1691	18.3%	90	13.2%	1781 (18.0%)
	25 to 34	3208	34.7%	251	36.9%	3459 (34.9%)
	35 to 44	2459	26.6%	194	28.5%	2653 (26.7%)
	45 and over	1861	20.1%	145	21.3%	2006 (20.2%)
	1. Inmates under 18 years of age are held at Kariong Juvenile Correctional Centre.					
S	Country of birth					
		Australian born				7425 (74.8%)
		Overseas born				2291 (23.1%)
		Unknown				204 (2.1%)
	English speaking status of country of birth					
		Australian born				7425 (74.8%)
		Other English speaking				534 (5.4%)
		Non-English speaking				1759 (17.7%)
		Unknown				204 (2.1%)
S	Prior adult imprisonment (including remand)					
		Yes				7389 (74.5%)
		No				2531 (25.5%)
	Maximum period of imprisonment					
		Unsentenced				2778 (28.0%)
		Less than 2 years				2601 (26.2%)
		2 to less than 5 years				1568 (15.8%)
		5 to less than 20 years				2418 (24.4%)
		20 years +				388 (3.9%)
		Life/Forensic patient				167 (1.7%)
E	Inmate security classification					
	Security level	Convicted	%	Unconvicted	%	Total %
	Maximum	674	9.7%	986	33.2%	1660 16.7%
	Medium	1379	19.8%	1221	41.2%	2600 26.2%
	Minimum	4779	68.7%	482	16.2%	5261 53.0%
	Unclassified	121	1.7%	278	9.4%	399 4.0%
	Total	6953	100%	2967	100%	9920 100%

Table 2.1 Demographic characteristics

	GENDER				TOTAL	
	Male		Female			
Age at Census date (years)						
Under 16 ¹	--	--	--	--	--	--
16 ¹	10	0.1%	--	--	10	0.1%
17 ¹	11	0.1%	--	--	11	0.1%
18	82	0.9%	6	0.9%	88	0.9%
19	167	1.8%	6	0.9%	173	1.7%
20	244	2.6%	7	1.0%	251	2.5%
21-22	596	6.5%	33	4.9%	629	6.3%
23-24	602	6.5%	38	5.6%	640	6.5%
25-29	1587	17.2%	114	16.8%	1701	17.1%
30-34	1621	17.5%	137	20.1%	1758	17.7%
35-39	1333	14.4%	99	14.6%	1432	14.4%
40-44	1126	12.2%	95	14.0%	1221	12.3%
45-49	736	8.0%	55	8.1%	791	8.0%
50-54	443	4.8%	41	6.0%	484	4.9%
55-59	291	3.1%	31	4.6%	322	3.2%
60-64	197	2.1%	10	1.5%	207	2.1%
65 +	194	2.1%	8	1.2%	202	2.0%
Aboriginality						
Aboriginal/Torres Strait Islander	2116	22.9%	200	29.4%	2316	23.3%
Non-Aboriginal	7017	75.9%	462	67.9%	7479	75.4%
Unknown	107	1.2%	18	2.6%	125	1.3%
Known prior imprisonment as an adult						
Known prior imprisonment	6918	74.9%	471	69.3%	7389	74.5%
- full-time custody (convicted)	4999	54.1%	303	44.6%	5302	53.4%
- full-time custody (fine only)	39	0.4%	2	0.3%	41	0.4%
- full-time custody (remand)	1875	20.3%	166	24.4%	2041	20.6%
- periodic detention	5	0.1%	--	--	5	0.1%
No prior imprisonment	2322	25.1%	209	30.7%	2531	25.5%
- prior community based order	425	4.6%	31	4.6%	456	4.6%
- no prior imprisonment or community order	1897	20.5%	178	26.2%	2075	20.9%
Marital status at reception						
Never married	5307	57.4%	330	48.5%	5637	56.8%
Married/de-facto	2697	29.2%	215	31.6%	2912	29.4%
Separated	246	2.7%	26	3.8%	272	2.7%
Divorced	353	3.8%	37	5.4%	390	3.9%
Widowed	45	0.5%	8	1.2%	53	0.5%
Unknown	592	6.4%	64	9.4%	656	6.6%
English speaking status of country of birth						
Australian born	6926	75.0%	497	73.1%	7423	74.8%
Other English speaking	490	5.3%	44	6.5%	534	5.4%
Non-English speaking	1643	17.8%	116	17.1%	1759	17.7%
Country of birth unknown	181	2.0%	23	3.4%	204	2.1%
TOTAL	9240	100.0%	680	100.0%	9920	100.0%

* Less than 0.05%

1. Inmates under 18 years of age are held at Kariong Juvenile Correctional Centre.

Table 2.2 Legal status characteristics

	GENDER				TOTAL	
	Male		Female			
Legal status						
Under sentence - no appeal	6358	68.8%	430	63.2%	6788	68.4%
Appellant	257	2.8%	24	3.5%	281	2.8%
Forensic patient	72	0.8%	--	--	72	0.7%
Remand/trial ¹	2552	27.6%	226	33.2%	2778	28.0%
Awaiting deportation	--	--	--	--	--	--
Awaiting extradition	--	--	--	--	--	--
Civil inmate	1	*	--	--	1	*
Type of sentence						
Not under sentence	2552	27.6%	226	33.2%	2778	28.0%
Life	92	1.0%	3	0.4%	95	1.0%
Forensic patient	72	0.8%	--	--	72	0.7%
Sentence/Non Parole	5500	59.5%	357	52.5%	5857	59.0%
Sentence/Parole declined	1024	11.1%	94	13.8%	1118	11.3%
Fine default	--	--	--	--	--	--
Level of Court of most serious offence						
Supreme	961	10.4%	59	8.7%	1020	10.3%
District	3749	40.6%	240	35.3%	3989	40.2%
Local	3597	38.9%	299	44.0%	3896	39.3%
Parole Board	758	8.2%	65	9.6%	823	8.3%
Drug Court	134	1.5%	17	2.5%	151	1.5%
Children's Court	40	0.4%	--	--	40	0.4%
Federal/Other	1	*	--	--	1	*
Immigration	--	--	--	--	--	--
State of Court of most serious offence						
New South Wales	9219	99.8%	677	99.6%	9896	99.8%
Victoria	5	0.1%	--	--	5	0.1%
Queensland	6	0.1%	--	--	6	0.1%
South Australia	2	*	--	--	2	*
Western Australia	6	0.1%	3	0.4%	9	0.1%
Tasmania	--	--	--	--	--	--
Northern Territory	--	--	--	--	--	--
Australian Capital Territory	1	*	--	--	1	*
Overseas	1	*	--	--	1	*
TOTAL	9240	100.0%	680	100.0%	9920	100.0%

* Less than 0.05%

1. Remand/trial includes awaiting sentence - see explanatory note (g).

Table 2.3 Characteristics of offences and sentences

	GENDER				TOTAL	
	Male		Female			
Most serious offence (MSO) ¹						
Homicide and related offences	796	8.6%	59	8.7%	855	8.6%
Murder	552	6.0%	37	5.4%	589	5.9%
Attempted murder	98	1.1%	6	0.9%	104	1.0%
Manslaughter and driving causing death	146	1.6%	16	2.4%	162	1.6%
Acts intended to cause injury	1765	19.1%	110	16.2%	1875	18.9%
Assault	1630	17.6%	105	15.4%	1735	17.5%
Other acts intended to cause injury	135	1.5%	5	0.7%	140	1.4%
Sexual assault and related offences	994	10.8%	17	2.5%	1011	10.2%
Sexual assault	886	9.6%	13	1.9%	899	9.1%
Non-assaultive sexual offences	108	1.2%	4	0.6%	112	1.1%
Dangerous or negligent acts endang. persons	218	2.4%	9	1.3%	227	2.3%
Dangerous or negligent operation of vehicle	186	2.0%	8	1.2%	194	2.0%
Other dangerous or negligent acts	32	0.3%	1	0.1%	33	0.3%
Abduction, harassment and other offences	162	1.8%	14	2.1%	176	1.8%
Abduction and kidnapping	107	1.2%	12	1.8%	119	1.2%
Deprivation of liberty / false imprisonment	14	0.2%	1	0.1%	15	0.2%
Harassment and threatening behaviour	41	0.4%	1	0.1%	42	0.4%
Robbery, extortion and related offences	997	10.8%	34	5.0%	1031	10.4%
Robbery	996	10.8%	34	5.0%	1030	10.4%
Blackmail and extortion	1	*	--	--	1	*
Unlawful entry with intent/burglary, B&E	842	9.1%	40	5.9%	882	8.9%
Theft and related offences	349	3.8%	69	10.1%	418	4.2%
Motor vehicle theft and related offences	69	0.7%	7	1.0%	76	0.8%
Theft (except motor vehicles)	166	1.8%	49	7.2%	215	2.2%
Receive or handle proceeds of crime	114	1.2%	13	1.9%	127	1.3%
Fraud, deception and related offences	169	1.8%	47	6.9%	216	2.2%
Obtain benefit by deception	121	1.3%	42	6.2%	163	1.6%
Forgery and counterfeiting	5	0.1%	--	--	5	0.1%
Deceptive business/government practices	10	0.1%	1	0.1%	11	0.1%
Other fraud and deception offences	33	0.4%	4	0.6%	37	0.4%
Illicit drug offences	1411	15.3%	164	24.1%	1575	15.9%
Import or export illicit drugs	305	3.3%	63	9.3%	368	3.7%
Deal or traffic in illicit drugs	931	10.1%	88	12.9%	1019	10.3%
Manufacture or cultivate illicit drugs	145	1.6%	6	0.9%	151	1.5%
Possess and/or use illicit drugs	30	0.3%	6	0.9%	36	0.4%
Other illicit drug offences	--	--	1	0.1%	1	*
Prohibited and regulated weapons etc.	139	1.5%	5	0.7%	144	1.5%
Prohibited weapons/explosives	52	0.6%	--	--	52	0.5%
Regulated weapons/explosives	87	0.9%	5	0.7%	92	0.9%
Property damage and environmental pollution	84	0.9%	2	0.3%	86	0.9%
Public order offences	85	0.9%	3	0.4%	88	0.9%
Disorderly conduct	69	0.7%	2	0.3%	71	0.7%
Regulated public order offences	14	0.2%	--	--	14	0.1%
Offensive conduct	2	*	1	0.1%	3	*
Traffic and vehicle regulatory offences	232	2.5%	21	3.1%	253	2.6%
Driving licence offences	181	2.0%	19	2.8%	200	2.0%
Road vehicle registration and roadworthiness	--	--	--	--	--	--
Regulatory driving offences	51	0.6%	2	0.3%	53	0.5%
Pedestrian offences	--	--	--	--	--	--
Offences against justice procedures etc.	954	10.3%	81	11.9%	1035	10.4%
Breach of custodial order offences	16	0.2%	1	0.1%	17	0.2%
Breach of community-based orders	776	8.4%	68	10.0%	844	8.5%
Breach of violence and non-violence orders	66	0.7%	5	0.7%	71	0.7%
Offences against government operations	30	0.3%	--	--	30	0.3%
Offences against government security	9	0.1%	--	--	9	0.1%
Offences against justice procedures	57	0.6%	7	1.0%	64	0.6%
Miscellaneous offences	43	0.5%	5	0.7%	48	0.5%
TOTAL	9240	100.0%	680	100.0%	9920	100.0%

* Less than 0.05%

1. Offences classified under Australian Standard Offence Classification 2008 - see explanatory note (j).

Table 2.3 Characteristics of offences and sentences (continued)

	GENDER				TOTAL	
	Male		Female			
Length of aggregate sentence						
Not under sentence	2552	27.6%	226	33.2%	2778	28.0%
1 - 7 days	1	*	--	--	1	*
8 - < 1 month	6	0.1%	1	0.1%	7	0.1%
1 month - < 3 months	71	0.8%	14	2.1%	85	0.9%
3 months - < 6 months	243	2.6%	26	3.8%	269	2.7%
6 months - < 9 months	327	3.5%	38	5.6%	365	3.7%
9 months - < 1 year	547	5.9%	58	8.5%	605	6.1%
1 - < 2 years	1184	12.8%	85	12.5%	1269	12.8%
2 - < 5 years	1475	16.0%	93	13.7%	1568	15.8%
5 - < 7 years	682	7.4%	45	6.6%	727	7.3%
7 - < 10 years	793	8.6%	37	5.4%	830	8.4%
10 - < 15 years	583	6.3%	22	3.2%	605	6.1%
15 - < 20 years	244	2.6%	12	1.8%	256	2.6%
20 years +	368	4.0%	20	2.9%	388	3.9%
Life	92	1.0%	3	0.4%	95	1.0%
Forensic patient	72	0.8%	--	--	72	0.7%
Indeterminate sentences - Life sentence and Forensic patients						
Not Life or Forensic/correctional patient	9076	98.2%	677	99.6%	9753	98.3%
Life 'Natural Life'	42	0.5%	2	0.3%	44	0.4%
Life - yet to be redetermined	9	0.1%	--	--	9	0.1%
Life / Non Parole period	38	0.4%	1	0.1%	39	0.4%
Life - Breach of parole/licence	1	*	--	--	1	*
Life (ACT)	--	--	--	--	--	--
Life (Federal)	2	*	--	--	2	*
Forensic patient - Indeterminate term	31	0.3%	--	--	31	0.3%
Forensic patient - Limiting term	21	0.2%	--	--	21	0.2%
Correctional patient ¹ - under sentence	9	0.1%	--	--	9	0.1%
Correctional patient ¹ - unsentenced	11	0.1%	--	--	11	0.1%
Is any offence a federal offence ?						
Yes	487	5.3%	60	8.8%	547	5.5%
No	8753	94.7%	620	91.2%	9373	94.5%
Is the most serious offence a federal offence ?						
Yes	401	4.3%	56	8.2%	457	4.6%
No	8839	95.7%	624	91.8%	9463	95.4%
TOTAL	9240	100.0%	680	100.0%	9920	100.0%

* less than 0.05%.

1. See explanatory note (h).

Table 2.3 Characteristics of offences and sentences (continued)

	GENDER				TOTAL	
	Male		Female			
Is the inmate serving a term for breach of parole, licence or escape ?						
Not breach of parole/licence or escapee	7599	82.2%	584	85.9%	8183	82.5%
Breach of parole	1601	17.3%	96	14.1%	1697	17.1%
Breach of licence	--	--	--	--	--	--
Escape	29	0.3%	--	--	29	0.3%
Breach of parole and escape	11	0.1%	--	--	11	0.1%
Are there any other offences for inmates whose MSO is breach of parole/licence ?						
MSO not breach of parole/licence	8545	92.5%	619	91.0%	9164	92.4%
No other offence (excludes fines)	242	2.6%	22	3.2%	264	2.7%
Remand for other offence(s)	289	3.1%	25	3.7%	314	3.2%
Convicted for other offence(s)	164	1.8%	14	2.1%	178	1.8%
Is the inmate in full-time custody having breached an order (other than parole/licence)?						
In full-time - no breach	9220	99.8%	678	99.7%	9898	99.8%
Sentenced - breach of periodic detention	16	0.2%	2	0.3%	18	0.2%
Sentenced - breach of home detention	4	*	--	--	4	*
Remanded - breach of periodic detention	--	--	--	--	--	--
Remanded - breach home detention	--	--	--	--	--	--
Has there been an episode in full-time (FT) custody since commencing periodic detention?						
Currently in full-time custody	9240	100.0%	680	100.0%	9920	100.0%
Time to serve to earliest date of release (EDR)						
Unsentenced	2552	27.6%	226	33.2%	2778	28.0%
Earliest date of release lapsed	248	2.7%	2	0.3%	250	2.5%
< 3 months	1372	14.8%	150	22.1%	1522	15.3%
3 - < 6 months	1119	12.1%	86	12.6%	1205	12.1%
6 - < 12 months	1223	13.2%	73	10.7%	1296	13.1%
1 - < 2 years	1077	11.7%	65	9.6%	1142	11.5%
2 - < 5 years	943	10.2%	44	6.5%	987	9.9%
5 years +	542	5.9%	31	4.6%	573	5.8%
Indeterminate (Life/forensic patient) ¹	164	1.8%	3	0.4%	167	1.7%
TOTAL	9240	100.0%	680	100.0%	9920	100.0%

1. Includes all inmates with a type of sentence of Life or Forensic patient regardless of whether an earliest date of release exists for that inmate.

Table 2.4 Inmate security classification

	GENDER				TOTAL	
	Male		Female			
Security classification of inmate ¹						
Maximum security classification						
Maximum security - Convicted	674	7.3%	--	--	674	6.8%
AA	6	0.1%	--	--	6	0.1%
A1	22	0.2%	--	--	22	0.2%
A2	554	6.0%	--	--	554	5.6%
E1	92	1.0%	--	--	92	0.9%
Category 5 (Female)	--	--	--	--	--	--
Maximum security - Unconvicted	986	10.7%	--	--	986	9.9%
Unconvicted AA	1	*	--	--	1	*
Unconvicted A1	--	--	--	--	--	--
Unconvicted A2	955	10.3%	--	--	955	9.6%
Unconvicted E1	30	0.3%	--	--	30	0.3%
Sub-total Maximum security	1660	18.0%	--	--	1660	16.7%
Medium security classification						
Medium security - Convicted	1337	14.5%	42	6.2%	1379	13.9%
B	1016	11.0%	--	--	1016	10.2%
E2	321	3.5%	14	2.1%	335	3.4%
Category 4 (Female)	--	--	28	4.1%	28	0.3%
Medium security - Unconvicted	1152	12.5%	69	10.1%	1221	12.3%
Unconvicted B	1057	11.4%	--	--	1057	10.7%
Unconvicted E2	95	1.0%	8	1.2%	103	1.0%
Unconvicted Category 4 (Female)	--	--	61	9.0%	61	0.6%
Sub-total Medium security	2489	26.9%	111	16.3%	2600	26.2%
Minimum security classification						
Minimum security - Convicted	4385	47.5%	394	57.9%	4779	48.2%
C1	1384	15.0%	--	--	1384	14.0%
C2	2553	27.6%	--	--	2553	25.7%
C3	411	4.4%	--	--	411	4.1%
Compulsory Drug Treatment Centre	37	0.4%	--	--	37	0.4%
Category 3 (Female)	--	--	57	8.4%	57	0.6%
Category 2 (Female)	--	--	287	42.2%	287	2.9%
Category 1 (Female)	--	--	50	7.4%	50	0.5%
Minimum security - Unconvicted	352	3.8%	130	19.1%	482	4.9%
Unconvicted C1	352	3.8%	--	--	352	3.5%
Unconvicted Category 3 (Female)	--	--	59	8.7%	59	0.6%
Unconvicted Category 2 (Female)	--	--	71	10.4%	71	0.7%
Sub-total Minimum	4737	51.3%	524	77.1%	5261	53.0%
Unclassified						
Unclassified - convicted	108	1.2%	13	1.9%	121	1.2%
Unclassified - unconvicted	246	2.7%	32	4.7%	278	2.8%
Sub-total Unclassified	354	3.8%	45	6.6%	399	4.0%
TOTAL	9240	100.0%	680	100.0%	9920	100.0%

1. Some convicted inmates may have an "unconvicted" inmate classification if they were facing further and more serious charges or had not been re-classified at the time of the census. Therefore the total number of inmates with "convicted" inmate classifications may not be equal to the total number of convicted inmates.

Table 2.5 Location and correctional centre security classification

	GENDER				TOTAL	
	Male		Female			
Correctional centre by security rating						
Maximum security						
Cessnock (Maximum)	230	2.5%	--	--	230	2.3%
Goulburn (Maximum)	441	4.8%	--	--	441	4.4%
High Risk Management	32	0.3%	--	--	32	0.3%
Lithgow	328	3.5%	--	--	328	3.3%
Long Bay Hospital	369	4.0%	1	0.1%	370	3.7%
Metro. Special Programs (Maximum)	36	0.4%	--	--	36	0.4%
Metropolitan Remand and Reception	892	9.7%	--	--	892	9.0%
Parklea (Maximum)	738	8.0%	--	--	738	7.4%
Silverwater Women's	--	--	207	30.4%	207	2.1%
South Coast (Maximum)	332	3.6%	1	0.1%	333	3.4%
Special Purpose Centre (Maximum)	48	0.5%	--	--	48	0.5%
Wellington (Maximum)	347	3.8%	--	--	347	3.5%
Sub-total Maximum security	3793	41.0%	209	30.7%	4002	40.3%
Medium security						
Bathurst (Medium)	402	4.4%	2	0.3%	404	4.1%
Broken Hill (Medium)	37	0.4%	--	--	37	0.4%
Cooma	149	1.6%	--	--	149	1.5%
Dillwynia (Medium)	--	--	158	23.2%	158	1.6%
Grafton (Medium)	38	0.4%	3	0.4%	41	0.4%
John Morony (Medium)	254	2.7%	--	--	254	2.6%
Junee (Medium)	627	6.8%	1	0.1%	628	6.3%
Kariong (Juvenile)	31	0.3%	--	--	31	0.3%
Mid-North Coast (Medium)	364	3.9%	--	--	364	3.7%
Tamworth (Medium)	49	0.5%	--	--	49	0.5%
Sub-total Medium security	1951	21.1%	164	24.1%	2115	21.3%
Minimum security						
Bathurst (Minimum)	177	1.9%	--	--	177	1.8%
Brewarrina (Yetta Dhinnakkal)	27	0.3%	--	--	27	0.3%
Broken Hill (Minimum)	25	0.3%	5	0.7%	30	0.3%
Cessnock (Minimum)	439	4.8%	--	--	439	4.4%
Compulsory Drug Treatment	32	0.3%	--	--	32	0.3%
Dawn de Loas	507	5.5%	--	--	507	5.1%
Dillwynia (Minimum)	--	--	21	3.1%	21	0.2%
Emu Plains	--	--	172	25.3%	172	1.7%
Glen Innes	139	1.5%	--	--	139	1.4%
Goulburn (Minimum)	102	1.1%	--	--	102	1.0%
Ivanhoe (Warakirri)	22	0.2%	--	--	22	0.2%
Junee (Minimum)	140	1.5%	--	--	140	1.4%
Mannus	153	1.7%	--	--	153	1.5%
Metro. Special Programs (Minimum)	545	5.9%	--	--	545	5.5%
Mid-North Coast (Minimum)	109	1.2%	42	6.2%	151	1.5%
Oberon	116	1.3%	--	--	116	1.2%
Outer Metropolitan Multi-Purpose	237	2.6%	--	--	237	2.4%
Parklea (Minimum)	76	0.8%	--	--	76	0.8%
South Coast (Minimum)	210	2.3%	--	--	210	2.1%
St. Heliers	280	3.0%	--	--	280	2.8%
Tamworth (Minimum)	23	0.2%	--	--	23	0.2%
Wellington (Minimum)	84	0.9%	42	6.2%	126	1.3%
Sub-total Minimum security	3443	37.3%	282	41.5%	3725	37.6%
Sub-total Correctional Centres	9187	99.4%	655	96.3%	9842	99.2%

Table 2.5 Location and correctional centre security classification (continued)

	GENDER				TOTAL	
	Male		Female			
Transitional Centres						
Bolwara House Transitional Centres	--	--	10	1.5%	10	0.1%
Parramatta Transitional Centre	--	--	10	1.5%	10	0.1%
Sub-total Transitional Centres	--	--	20	2.9%	20	0.2%
Court/Police Cell Complexes						
Albury	1	*	--	--	1	*
Batesman Bay	1	*	--	--	1	*
Campbelltown	1	*	1	0.1%	2	*
Dubbo	--	--	--	--	--	--
Lismore	5	0.1%	--	--	5	0.1%
Moree	2	*	--	--	2	*
Newcastle	1	*	--	--	1	*
Parramatta	1	*	2	0.3%	3	*
Penrith	3	*	2	0.3%	5	0.1%
Port Macquarie	1	*	--	--	1	*
Queanbeyan	--	--	--	--	--	--
Surry Hills (Sydney)	31	0.3%	--	--	31	0.3%
Wagga Wagga	1	*	--	--	1	*
Wollongong	5	0.1%	--	--	5	0.1%
Sub-total Court/Police Cell Complexes	53	0.6%	5	0.7%	58	0.6%
TOTAL	9240	100.0%	680	100.0%	9920	100.0%

* less than 0.05%

Table 2.6 Country of birth

Country of birth	GENDER				TOTAL	
	Male		Female			
OCEANIA AND ANTARCTICA						
AUSTRALIA (incl. ext. territories)	6928	75.0%	497	73.1%	7425	74.8%
- New South Wales	5702	61.7%	400	58.8%	6102	61.5%
- Victoria	226	2.4%	15	2.2%	241	2.4%
- Queensland	252	2.7%	12	1.8%	264	2.7%
- South Australia	63	0.7%	6	0.9%	69	0.7%
- Western Australia	32	0.3%	6	0.9%	38	0.4%
- Tasmania	37	0.4%	3	0.4%	40	0.4%
- Northern Territory	17	0.2%	1	0.1%	18	0.2%
- Australian Capital Territory	54	0.6%	2	0.3%	56	0.6%
- Australian External Territories	--	--	--	--	--	--
- Australia (not further defined)	545	5.9%	52	7.6%	597	6.0%
- Norfolk Island	--	--	--	--	--	--
NEW ZEALAND	283	3.1%	23	3.4%	306	3.1%
MELANESIA	12	0.1%	--	--	12	0.1%
- New Caledonia	--	--	--	--	--	--
- Papua New Guinea	10	0.1%	--	--	10	0.1%
- Solomon Islands	1	*	--	--	1	*
- Vanuatu	1	*	--	--	1	*
MICRONESIA	--	--	--	--	--	--
POLYNESIA (excl. Hawaii)	148	1.6%	7	1.0%	155	1.6%
- Cook Islands	10	0.1%	--	--	10	0.1%
- Fiji	75	0.8%	6	0.9%	81	0.8%
- Samoa	41	0.4%	--	--	41	0.4%
- Samoa American	--	--	--	--	--	--
- Tonga	22	0.2%	1	0.1%	23	0.2%
- Tuvalu	--	--	--	--	--	--
Sub-total						
OCEANIA AND ANTARCTICA	7371	79.8%	527	77.5%	7898	79.6%
NORTH-WEST EUROPE						
UNITED KINGDOM	121	1.3%	9	1.3%	130	1.3%
- England	101	1.1%	8	1.2%	109	1.1%
- Isle of Man	--	--	--	--	--	--
- Northern Ireland	2	*	--	--	2	*
- Scotland	17	0.2%	1	0.1%	18	0.2%
- Wales	1	*	--	--	1	*
IRELAND	17	0.2%	1	0.1%	18	0.2%
WESTERN EUROPE	43	0.5%	2	0.3%	45	0.5%
- Austria	12	0.1%	--	--	12	0.1%
- Belgium	5	0.1%	--	--	5	0.1%
- France	5	0.1%	--	--	5	0.1%
- Germany	12	0.1%	2	0.3%	14	0.1%
- Monaco	1	*	--	--	1	*
- Netherlands	8	0.1%	--	--	8	0.1%
- Switzerland	--	--	--	--	--	--
NORTHERN EUROPE	4	*	--	--	4	*
- Denmark	--	--	--	--	--	--
- Finland	3	*	--	--	3	*
- Sweden	1	*	--	--	1	*
Sub-total						
NORTH-WEST EUROPE	185	2.0%	12	1.8%	197	2.0%

* Less than 0.05%

Table 2.6 Country of birth (continued)

Country of birth (continued)	GENDER				TOTAL	
	Male		Female			
SOUTHERN AND EASTERN EUROPE						
SOUTHERN EUROPE	51	0.6%	1	0.1%	52	0.5%
- Italy	27	0.3%	--	--	27	0.3%
- Malta	7	0.1%	--	--	7	0.1%
- Portugal	9	0.1%	--	--	9	0.1%
- Spain	8	0.1%	1	0.1%	9	0.1%
SOUTH EASTERN EUROPE	109	1.2%	1	0.1%	110	1.1%
- Albania	4	*	--	--	4	*
- Bosnia-Herzegovina	7	0.1%	--	--	7	0.1%
- Bulgaria	1	*	--	--	1	*
- Croatia	15	0.2%	--	--	15	0.2%
- Cyprus	8	0.1%	--	--	8	0.1%
- Fmr Yugoslav Rep. of Macedonia	28	0.3%	1	0.1%	29	0.3%
- Greece	19	0.2%	--	--	19	0.2%
- Montenegro	1	*	--	--	1	*
- Romania	16	0.2%	--	--	16	0.2%
- Serbia	10	0.1%	--	--	10	0.1%
- Slovenia	--	--	--	--	--	--
EASTERN EUROPE	22	0.2%	3	0.4%	25	0.3%
- Belarus	--	--	--	--	--	--
- Czech Republic	3	*	--	--	3	*
- Hungary	5	0.1%	--	--	5	0.1%
- Latvia	--	--	--	--	--	--
- Lithuania	3	*	--	--	3	*
- Poland	4	*	1	0.1%	5	0.1%
- Russian Federation	6	0.1%	--	--	6	0.1%
- Ukraine	1	*	2	0.3%	3	*
Sub-total						
SOUTHERN AND EASTERN EUROPE	182	2.0%	5	0.7%	187	1.9%
NORTH AFRICA AND THE MIDDLE EAST						
NORTH AFRICA	53	0.6%	1	0.1%	54	0.5%
- Algeria	2	*	--	--	2	*
- Egypt	18	0.2%	--	--	18	0.2%
- Libya	1	*	--	--	1	*
- Morocco	2	*	--	--	2	*
- Sudan	30	0.3%	1	0.1%	31	0.3%
- Western Sahara	--	--	--	--	--	--
MIDDLE EAST	291	3.1%	5	0.7%	296	3.0%
- Gaza Strip and West Bank	--	--	--	--	--	--
- Iran	28	0.3%	--	--	28	0.3%
- Iraq	58	0.6%	2	0.3%	60	0.6%
- Israel	5	0.1%	--	--	5	0.1%
- Jordan	7	0.1%	--	--	7	0.1%
- Kuwait	3	*	1	0.1%	4	*
- Lebanon	149	1.6%	2	0.3%	151	1.5%
- Saudi Arabia	3	*	--	--	3	*
- Syria	6	0.1%	--	--	6	0.1%
- Turkey	30	0.3%	--	--	30	0.3%
- United Arab Emirates	2	*	--	--	2	*
Sub-total						
NORTH AFRICA AND THE MIDDLE EAST	344	3.7%	6	0.9%	350	3.5%

* Less than 0.05%

Table 2.6 Country of birth (continued)

Country of birth (continued)	GENDER				TOTAL	
	Male		Female			
SOUTH-EAST ASIA						
MAINLAND SOUTH-EAST ASIA	324	3.5%	58	8.5%	382	3.9%
- Burma (Myanmar)	4	*	--	--	4	*
- Cambodia	24	0.3%	5	0.7%	29	0.3%
- Laos	19	0.2%	1	0.1%	20	0.2%
- Thailand	30	0.3%	4	0.6%	34	0.3%
- Viet Nam	247	2.7%	48	7.1%	295	3.0%
MARITIME SOUTH-EAST ASIA	144	1.6%	15	2.2%	159	1.6%
- Brunei Darussalam	--	--	--	--	--	--
- Indonesia	39	0.4%	--	--	39	0.4%
- Malaysia	24	0.3%	6	0.9%	30	0.3%
- Philippines	61	0.7%	8	1.2%	69	0.7%
- Singapore	19	0.2%	1	0.1%	20	0.2%
- East Timor	1	*	--	--	1	*
Sub-total	468	5.1%	73	10.7%	541	5.5%
SOUTHEAST ASIA						
NORTH-EAST ASIA						
CHINESE ASIA (incl. Mongolia)	169	1.8%	17	2.5%	186	1.9%
- China (excl. SAR's and Taiwan)	123	1.3%	14	2.1%	137	1.4%
- Hong Kong (SAR of China)	38	0.4%	3	0.4%	41	0.4%
- Macau	1	*	--	--	1	*
- Mongolia	--	--	--	--	--	--
- Taiwan	7	0.1%	--	--	7	0.1%
JAPAN AND THE KOREAS	35	0.4%	--	--	35	0.4%
- Japan	4	*	--	--	4	*
- Korea, Democratic People's Republic of (North)	1	*	--	--	1	*
- Korea, Republic of (South)	30	0.3%	--	--	30	0.3%
Sub-total	204	2.2%	17	2.5%	221	2.2%
SOUTHERN AND CENTRAL ASIA						
SOUTHERN ASIA	74	0.8%	1	0.1%	75	0.8%
- Bangladesh	8	0.1%	--	--	8	0.1%
- India	37	0.4%	1	0.1%	38	0.4%
- Nepal	2	*	--	--	2	*
- Pakistan	13	0.1%	--	--	13	0.1%
- Sri Lanka	14	0.2%	--	--	14	0.1%
CENTRAL ASIA	25	0.3%	--	--	25	0.3%
- Afghanistan	25	0.3%	--	--	25	0.3%
- Armenia	--	--	--	--	--	--
- Kazakhstan	--	--	--	--	--	--
Sub-total	99	1.1%	1	0.1%	100	1.0%
AMERICAS						
NORTHERN AMERICA	46	0.5%	9	1.3%	55	0.6%
- Bermuda	--	--	--	--	--	--
- Canada	22	0.2%	6	0.9%	28	0.3%
- United States of America	24	0.3%	3	0.4%	27	0.3%

* Less than 0.05%

Table 2.6 Country of birth (continued)

Country of birth (continued)	GENDER				TOTAL	
	Male		Female			
AMERICAS (continued)						
SOUTH AMERICA	60	0.6%	3	0.4%	63	0.6%
- Argentina	7	0.1%	--	--	7	0.1%
- Bolivia	1	*	--	--	1	*
- Brazil	4	*	--	--	4	*
- Chile	15	0.2%	1	0.1%	16	0.2%
- Colombia	18	0.2%	1	0.1%	19	0.2%
- Ecuador	2	*	--	--	2	*
- Peru	6	0.1%	--	--	6	0.1%
- Uruguay	7	0.1%	1	0.1%	8	0.1%
CENTRAL AMERICA	19	0.2%	--	--	19	0.2%
- El Salvador	7	0.1%	--	--	7	0.1%
- Guatemala	--	--	--	--	--	--
- Mexico	8	0.1%	--	--	8	0.1%
- Nicaragua	4	*	--	--	4	*
CARIBBEAN	3	*	1	0.1%	4	*
- Cuba	1	*	--	--	1	*
- Jamaica	2	*	1	0.1%	3	*
Sub-total AMERICAS	128	1.4%	13	1.9%	141	1.4%
SUB-SAHARAN AFRICA						
CENTRAL & WEST AFRICA	33	0.4%	--	--	33	0.3%
- Benin	1	*	--	--	1	*
- Congo	2	*	--	--	2	*
- Gambia	--	--	--	--	--	--
- Ghana	--	--	--	--	--	--
- Mauritania	--	--	--	--	--	--
- Niger	--	--	--	--	--	--
- Nigeria	26	0.3%	--	--	26	0.3%
- Senegal	--	--	--	--	--	--
- Sierra Leone	4	*	--	--	4	*
SOUTHERN & EAST AFRICA	47	0.5%	3	0.4%	50	0.5%
- Angola	1	*	--	--	1	*
- Botswana	--	--	--	--	--	--
- Ethiopia	4	*	--	--	4	*
- Kenya	4	*	--	--	4	*
- Malawi	--	--	--	--	--	--
- Mauritius	3	*	--	--	3	*
- Somalia	--	--	--	--	--	--
- South Africa	23	0.2%	2	0.3%	25	0.3%
- Tanzania	2	*	1	0.1%	3	*
- Uganda	--	--	--	--	--	--
- Zambia	--	--	--	--	--	--
- Zimbabwe	5	0.1%	--	--	5	0.1%
- Southern & East Africa (nec)	5	0.1%	--	--	5	0.1%
Sub-total SUB-SAHARAN AFRICA	80	0.9%	3	0.4%	83	0.8%
UNKNOWN	179	1.9%	23	3.4%	202	2.0%
TOTAL	9240	100.0%	680	100.0%	9920	100.0%

* Less than 0.05%

nec - not elsewhere classified

Table 2.7 Statistical area of last known address

Statistical area (Level 4)	GENDER				TOTAL	
	Male		Female			
New South Wales						
Capital Region	228	2.5%	20	2.9%	248	2.5%
Central Coast	346	3.7%	26	3.8%	372	3.8%
Central West	248	2.7%	32	4.7%	280	2.8%
Coffs Harbour - Grafton	164	1.8%	10	1.5%	174	1.8%
Far West and Orana	326	3.5%	19	2.8%	345	3.5%
Hunter Valley exc Newcastle	288	3.1%	30	4.4%	318	3.2%
Illawarra	380	4.1%	25	3.7%	405	4.1%
Mid North Coast	332	3.6%	25	3.7%	357	3.6%
Murray	116	1.3%	5	0.7%	121	1.2%
New England and North West	343	3.7%	17	2.5%	360	3.6%
Newcastle and Lake Macquarie	431	4.7%	37	5.4%	468	4.7%
Richmond - Tweed	239	2.6%	15	2.2%	254	2.6%
Riverina	209	2.3%	9	1.3%	218	2.2%
Southern Highlands and Shoalhaven	156	1.7%	9	1.3%	165	1.7%
Sydney - Baulkham Hills and Hawkesbury	59	0.6%	3	0.4%	62	0.6%
Sydney - Blacktown	524	5.7%	29	4.3%	553	5.6%
Sydney - City and Inner South	589	6.4%	61	9.0%	650	6.6%
Sydney - Eastern Suburbs	218	2.4%	11	1.6%	229	2.3%
Sydney - Inner South West	759	8.2%	52	7.6%	811	8.2%
Sydney - Inner West	212	2.3%	17	2.5%	229	2.3%
Sydney - North Sydney and Hornsby	102	1.1%	1	0.1%	103	1.0%
Sydney - Northern Beaches	93	1.0%	8	1.2%	101	1.0%
Sydney - Outer South West	451	4.9%	23	3.4%	474	4.8%
Sydney - Outer West and Blue Mountains	341	3.7%	23	3.4%	364	3.7%
Sydney - Parramatta	593	6.4%	38	5.6%	631	6.4%
Sydney - Ryde	56	0.6%	10	1.5%	66	0.7%
Sydney - South West	679	7.3%	58	8.5%	737	7.4%
Sydney - Sutherland	139	1.5%	19	2.8%	158	1.6%
Sub-total New South Wales	8621	93.3%	632	92.9%	9253	93.3%
Victoria	47	0.5%	3	0.4%	50	0.5%
Queensland	75	0.8%	6	0.9%	81	0.8%
South Australia	7	0.1%	--	--	7	0.1%
Western Australia	6	0.1%	--	--	6	0.1%
Tasmania	--	--	--	--	--	--
Northern Territory	1	*	--	--	1	*
Australian Capital Territory	7	0.1%	--	--	7	0.1%
Sub-total other states/territories	143	1.5%	9	1.3%	152	1.5%
No fixed abode	126	1.4%	2	0.3%	128	1.3%
Overseas	64	0.7%	9	1.3%	73	0.7%
Unknown	286	3.1%	28	4.1%	314	3.2%
TOTAL	9240	100.0%	680	100.0%	9920	100.0%

Section 3

PERIODIC DETAINEES

- detainees held in gazetted periodic detention centres in NSW

PERIODIC DETAINEES Statistical Summary

M	Total persons		8		
	Gender				
		Male	7	(87.5%)	
		Female	1	(12.5%)	
1	Aboriginality				
		Aboriginal/TSI	2	(25.0%)	
		Non-Aboriginal/TSI	6	(75.0%)	
		Unknown	--	--	
O	Age				
	Age group	Male	%	Female	
				%	
				Total	
				%	
	Under 18	-	--	-	--
	18 to 24	-	--	-	--
	25 to 34	1	14.3%	-	--
	35 to 44	2	28.6%	-	--
	45 and over	4	57.1%	1	100.0%
				5	(62.5%)
	Country of birth				
		Australian born	7	(87.5%)	
		Overseas born	1	(12.5%)	
		Unknown	--	--	
S	English speaking status of country of birth				
		Australian born	7	(87.5%)	
		Other English speaking	--	--	
		Non-English speaking	1	(12.5%)	
		Unknown	--	--	
U	Prior adult imprisonment (including remand)				
		Yes	4	(50.0%)	
		No	4	(50.0%)	
S	Maximum period of imprisonment				
		1 to 20 weeks	1	(12.5%)	
		21 to 40 weeks	5	(62.5%)	
		41 to 100 weeks	1	(12.5%)	
		101 weeks +	1	(12.5%)	
Z	Inmate security classification				
		PD - Stage 1	--	--	
		PD - Stage 2	8	(100.0%)	
U					

Table 3.1 Demographic characteristics

	GENDER				TOTAL	
	Male		Female			
Age at Census date (years)						
Under 16 ¹	--	--	--	--	--	--
16 ¹	--	--	--	--	--	--
17 ¹	--	--	--	--	--	--
18	--	--	--	--	--	--
19	--	--	--	--	--	--
20	--	--	--	--	--	--
21-22	--	--	--	--	--	--
23-24	--	--	--	--	--	--
25-29	--	--	--	--	--	--
30-34	1	14.3%	--	--	1	12.5%
35-39	--	--	--	--	--	--
40-44	2	28.6%	--	--	2	25.0%
45-49	1	14.3%	--	--	1	12.5%
50-54	1	14.3%	--	--	1	12.5%
55-59	2	28.6%	1	100.0%	3	37.5%
60-64	--	--	--	--	--	--
65 +	--	--	--	--	--	--
Aboriginality						
Aboriginal/Torres Strait Islander	1	14.3%	1	100.0%	2	25.0%
Non-Aboriginal	6	85.7%	--	--	6	75.0%
Unknown	--	--	--	--	--	--
Known prior imprisonment as an adult						
Known prior imprisonment	4	57.1%	--	--	4	50.0%
- full-time custody (convicted)	1	14.3%	--	--	1	12.5%
- full-time custody (fine only)	--	--	--	--	--	--
- full-time custody (remand)	3	42.9%	--	--	3	37.5%
- periodic detention	--	--	--	--	--	--
No prior imprisonment	3	42.9%	1	100.0%	4	50.0%
- prior community based order	2	28.6%	--	--	2	25.0%
- no prior imprisonment or community order	1	14.3%	1	100.0%	2	25.0%
Marital status at reception						
Never married	1	14.3%	--	--	1	12.5%
Married/de-facto	3	42.9%	1	100.0%	4	50.0%
Separated	1	14.3%	--	--	1	12.5%
Divorced	--	--	--	--	--	--
Widowed	--	--	--	--	--	--
Unknown	2	28.6%	--	--	2	25.0%
English speaking status of country of birth						
Australian born	6	85.7%	1	100.0%	7	87.5%
Other English speaking	--	--	--	--	--	--
Non-English speaking	1	14.3%	--	--	1	12.5%
Country of birth unknown	--	--	--	--	--	--
TOTAL	7	100.0%	1	100.0%	8	100.0%

* Less than 0.05%

1. Inmates under 18 years of age are held at Kariiong Juvenile Correctional Centre.

Table 3.2 Legal status characteristics

	GENDER		TOTAL
	Male	Female	
Legal status			
Under sentence - no appeal	7 100.0%	1 100.0%	8 100.0%
Appellant	-- --	-- --	-- --
Type of sentence			
Periodic (Sen/Non Parole)	1 14.3%	-- --	1 12.5%
Periodic (Sen/Parole declined)	6 85.7%	1 100.0%	7 87.5%
Level of Court of most serious offence			
Supreme	1 14.3%	-- --	1 12.5%
District	2 28.6%	1 100.0%	3 37.5%
Local	4 57.1%	-- --	4 50.0%
Parole Board	-- --	-- --	-- --
Drug Court	-- --	-- --	-- --
Children's Court	-- --	-- --	-- --
Federal/Other	-- --	-- --	-- --
Immigration	-- --	-- --	-- --
State of Court of most serious offence			
New South Wales	7 100.0%	1 100.0%	8 100.0%
TOTAL	7 100.0%	1 100.0%	8 100.0%

* Less than 0.05%

Table 3.3 Characteristics of offences and sentences

	GENDER				TOTAL	
	Male		Female			
Most serious offence (MSO) ¹						
Homicide and related offences	--	--	--	--	--	--
Murder	--	--	--	--	--	--
Attempted murder	--	--	--	--	--	--
Manslaughter and driving causing death	--	--	--	--	--	--
Acts intended to cause injury	--	--	--	--	--	--
Assault	--	--	--	--	--	--
Other acts intended to cause injury	--	--	--	--	--	--
Sexual assault and related offences	--	--	--	--	--	--
Sexual assault	--	--	--	--	--	--
Non-assaultive sexual offences	--	--	--	--	--	--
Dangerous or negligent acts endang. persons	--	--	--	--	--	--
Dangerous or negligent operation of vehicle	--	--	--	--	--	--
Other dangerous or negligent acts	--	--	--	--	--	--
Abduction, harassment and other offences	--	--	--	--	--	--
Abduction and kidnapping	--	--	--	--	--	--
Deprivation of liberty / false imprisonment	--	--	--	--	--	--
Harassment and threatening behaviour	--	--	--	--	--	--
Robbery, extortion and related offences	--	--	--	--	--	--
Robbery	--	--	--	--	--	--
Blackmail and extortion	--	--	--	--	--	--
Unlawful entry with intent/burglary, B&E	1	14.3%	--	--	1	12.5%
Theft and related offences	--	--	--	--	--	--
Motor vehicle theft and related offences	--	--	--	--	--	--
Theft (except motor vehicles)	--	--	--	--	--	--
Receive or handle proceeds of crime	--	--	--	--	--	--
Fraud, deception and related offences	5	71.4%	1	100.0%	6	75.0%
Obtain benefit by deception	5	71.4%	1	100.0%	6	75.0%
Forgery and counterfeiting	--	--	--	--	--	--
Deceptive business/government practices	--	--	--	--	--	--
Other fraud and deception offences	--	--	--	--	--	--
Illicit drug offences	1	14.3%	--	--	1	12.5%
Import or export illicit drugs	--	--	--	--	--	--
Deal or traffic in illicit drugs	1	14.3%	--	--	1	12.5%
Manufacture or cultivate illicit drugs	--	--	--	--	--	--
Possess and/or use illicit drugs	--	--	--	--	--	--
Other illicit drug offences	--	--	--	--	--	--
Prohibited and regulated weapons etc.	--	--	--	--	--	--
Prohibited weapons/explosives	--	--	--	--	--	--
Regulated weapons/explosives	--	--	--	--	--	--
Property damage and environmental pollution	--	--	--	--	--	--
Public order offences	--	--	--	--	--	--
Disorderly conduct	--	--	--	--	--	--
Regulated public order offences	--	--	--	--	--	--
Offensive conduct	--	--	--	--	--	--
Traffic and vehicle regulatory offences	--	--	--	--	--	--
Driving licence offences	--	--	--	--	--	--
Road vehicle registration and roadworthiness	--	--	--	--	--	--
Regulatory driving offences	--	--	--	--	--	--
Pedestrian offences	--	--	--	--	--	--
Offences against justice procedures etc.	--	--	--	--	--	--
Breach of custodial order offences	--	--	--	--	--	--
Breach of community-based orders	--	--	--	--	--	--
Breach of violence and non-violence orders	--	--	--	--	--	--
Offences against government operations	--	--	--	--	--	--
Offences against government security	--	--	--	--	--	--
Offences against justice procedures	--	--	--	--	--	--
Miscellaneous offences	--	--	--	--	--	--
TOTAL	7	100.0%	1	100.0%	8	100.0%

* Less than 0.05%

1. Offences classified under Australian Standard Offence Classification 2008 - see explanatory note (j).

Table 3.3 Characteristics of offences and sentences (continued)

	GENDER				TOTAL	
	Male		Female			
Length of aggregate sentence						
1 to 20 weeks	1	14.3%	--	--	1	12.5%
21 to 40 weeks	5	71.4%	--	--	5	62.5%
41 to 60 weeks	--	--	--	--	--	--
61 to 80 weeks	--	--	1	100.0%	1	12.5%
81 to 100 weeks	--	--	--	--	--	--
101 to 120 weeks	1	14.3%	--	--	1	12.5%
120 weeks +	--	--	--	--	--	--
Is any offence a federal offence ?						
Yes	5	71.4%	1	100.0%	6	75.0%
No	2	28.6%	--	--	2	25.0%
Is the most serious offence a federal offence ?						
Yes	5	71.4%	1	100.0%	6	75.0%
No	2	28.6%	--	--	2	25.0%
Is the inmate serving a term for breach of parole, licence or escape ?						
Not breach of parole/licence or escapee	7	100.0%	1	100.0%	8	100.0%
Has there been an episode in full-time custody since commencing periodic detention?						
In PD - no FT episode	7	100.0%	1	100.0%	8	100.0%
In PD - at least one FT episode	--	--	--	--	--	--
Time to serve to earliest date of release (EDR)						
Earliest date of release lapsed	1	14.3%	--	--	1	12.5%
< 3 months	4	57.1%	--	--	4	50.0%
3 - < 6 months	1	14.3%	--	--	1	12.5%
6 - < 12 months	1	14.3%	1	100.0%	2	25.0%
1 - < 2 years	--	--	--	--	--	--
2 - < 5 years	--	--	--	--	--	--
TOTAL	7	100.0%	1	100.0%	8	100.0%

* less than 0.05%.

Table 3.4 Location and classification of detainees

	GENDER		TOTAL
	Male	Female	
Periodic detention centres			
Periodic Detention Administration	5 71.4%	1 100.0%	6 75.0%
Silverwater PDC (Stage 2)	2 28.6%	-- --	2 25.0%
Security classification of detainee			
Periodic detainee - Stage 1	-- --	-- --	-- --
Periodic detainee - Stage 2	7 100.0%	1 100.0%	8 100.0%
Correctional Centre security			
Periodic detention	7 100.0%	1 100.0%	8 100.0%
TOTAL	7 100.0%	1 100.0%	8 100.0%

* less than 0.05%

Table 3.5 Country of birth

Country of birth	GENDER				TOTAL	
	Male		Female			
OCEANIA AND ANTARCTICA						
AUSTRALIA (incl. ext. territories)	6	85.7%	1	100.0%	7	87.5%
- New South Wales	2	28.6%	1	100.0%	3	37.5%
- Victoria	--	--	--	--	--	--
- Queensland	2	28.6%	--	--	2	25.0%
- South Australia	--	--	--	--	--	--
- Western Australia	1	14.3%	--	--	1	12.5%
- Tasmania	--	--	--	--	--	--
- Northern Territory	1	14.3%	--	--	1	12.5%
- Australian Capital Territory	--	--	--	--	--	--
- Australian External Territories	--	--	--	--	--	--
- Australia (not further defined)	--	--	--	--	--	--
- Norfolk Island	--	--	--	--	--	--
NEW ZEALAND	--	--	--	--	--	--
MELANESIA	--	--	--	--	--	--
MICRONESIA	--	--	--	--	--	--
POLYNESIA (excl. Hawaii)	--	--	--	--	--	--
Sub-total	6	85.7%	1	100.0%	7	87.5%
OCEANIA AND ANTARCTICA						
NORTH-WEST EUROPE						
UNITED KINGDOM	--	--	--	--	--	--
IRELAND	--	--	--	--	--	--
WESTERN EUROPE	1	14.3%	--	--	1	12.5%
- Germany	1	14.3%	--	--	1	12.5%
NORTHERN EUROPE	--	--	--	--	--	--
Sub-total	1	14.3%	--	--	1	12.5%
Sub-total	1	14.3%	--	--	1	12.5%
UNKNOWN	--	--	--	--	--	--
TOTAL	7	100.0%	1	100.0%	8	100.0%

* Less than 0.05%

Table 3.6 Statistical area of last known address

Statistical area (Level 4)	GENDER				TOTAL	
	Male		Female			
New South Wales						
Capital Region	--	--	--	--	--	--
Central Coast	1	14.3%	--	--	1	12.5%
Central West	--	--	--	--	--	--
Coffs Harbour - Grafton	--	--	--	--	--	--
Far West and Orana	--	--	--	--	--	--
Hunter Valley exc Newcastle	--	--	--	--	--	--
Illawarra	1	14.3%	--	--	1	12.5%
Mid North Coast	--	--	--	--	--	--
Murray	--	--	--	--	--	--
New England and North West	--	--	--	--	--	--
Newcastle and Lake Macquarie	2	28.6%	--	--	2	25.0%
Richmond - Tweed	--	--	--	--	--	--
Riverina	--	--	--	--	--	--
Southern Highlands and Shoalhaven	--	--	--	--	--	--
Sydney - Baulkham Hills and Hawkesbury	--	--	--	--	--	--
Sydney - Blacktown	1	14.3%	--	--	1	12.5%
Sydney - City and Inner South	1	14.3%	1	100.0%	2	25.0%
Sydney - Eastern Suburbs	--	--	--	--	--	--
Sydney - Inner South West	1	14.3%	--	--	1	12.5%
Sydney - Inner West	--	--	--	--	--	--
Sydney - North Sydney and Hornsby	--	--	--	--	--	--
Sydney - Northern Beaches	--	--	--	--	--	--
Sydney - Outer South West	--	--	--	--	--	--
Sydney - Outer West and Blue Mountains	--	--	--	--	--	--
Sydney - Parramatta	--	--	--	--	--	--
Sydney - Ryde	--	--	--	--	--	--
Sydney - South West	--	--	--	--	--	--
Sydney - Sutherland	--	--	--	--	--	--
Sub-total New South Wales	7	100.0%	1	100.0%	8	100.0%
Victoria	--	--	--	--	--	--
Queensland	--	--	--	--	--	--
South Australia	--	--	--	--	--	--
Western Australia	--	--	--	--	--	--
Tasmania	--	--	--	--	--	--
Northern Territory	--	--	--	--	--	--
Australian Capital Territory	--	--	--	--	--	--
Sub-total other states/territories	--	--	--	--	--	--
No fixed abode	--	--	--	--	--	--
Overseas	--	--	--	--	--	--
Unknown	--	--	--	--	--	--
TOTAL	7	100.0%	1	100.0%	8	100.0%

Section 4

MOST SERIOUS OFFENCE:

Aggregate sentence
(Sentenced inmates/detainees)

and

Time in custody
(Unsentenced inmates)

Table 4.1.1 Most serious offence by aggregate sentence imposed - Sentenced male inmates in full-time custody

Most serious offence ¹	Aggregate sentence														TOTAL
	< 1 mth	1-<3 mths	3-<6 mths	6-<9 mths	9-<12 mths	1-<2 years	2-< 5 years	5-<7 years	7-< 10 years	10-<15 years	15-<20 years	20 + years	Life	Forensic Patient	
Homicide and related	--	--	--	--	--	3	28	24	52	64	100	259	75	19	624
Acts intended to cause injury	--	3	29	81	161	297	237	90	94	48	9	9	--	17	1075
Sexual assault and related	--	--	1	3	12	35	139	107	169	186	53	37	--	16	758
Dangerous or negligent acts endang. persons	--	--	6	8	20	69	47	8	3	--	--	--	--	--	161
Abduction, harassment etc.	--	1	--	2	5	10	23	20	14	18	2	1	--	--	96
Robbery, extortion etc.	--	--	--	3	3	27	256	155	133	73	14	6	--	5	675
Unlawful entry with intent/burglary, B&E	--	--	4	6	41	160	278	75	40	20	3	4	--	3	634
Theft and related	1	4	21	32	61	98	48	12	12	4	1	--	--	1	295
Fraud, deception and related	--	--	2	5	12	29	42	24	11	4	3	--	--	--	132
Illicit drug offences	1	2	1	4	15	44	169	126	234	153	54	43	13	2	861
Weapons and explosives	--	--	2	2	1	15	29	19	14	5	--	--	--	--	87
Property damage and environmental pollution	1	1	3	1	7	14	12	7	2	2	--	1	--	3	54
Public order offences	--	--	4	6	9	31	15	4	7	2	1	--	--	1	80
Traffic and vehicle regulatory offences	--	1	19	28	77	83	12	--	--	--	--	--	--	--	220
Offences against justice procedures etc.	4	59	151	146	122	264	134	11	7	2	3	6	2	--	911
Miscellaneous offences	--	--	--	--	1	5	6	--	1	2	1	--	4	5	25
TOTAL	7	71	243	327	547	1184	1475	682	793	583	244	366	94	72	6688

1. Offences classified under Australian Standard Offence Classification (2008) - see explanatory note (j).

Table 4.1.2

Most serious offence by aggregate sentence imposed - Sentenced female inmates in full-time custody

Most serious offence ¹	Aggregate sentence														TOTAL
	< 1 mth	1-<3 mths	3-<6 mths	6-<9 mths	9-<12 mths	1-<2 years	2-< 5 years	5-<7 years	7-< 10 years	10-<15 years	15-<20 years	20 + years	Life	Forensic Patient	
Homicide and related	--	--	--	--	--	1	1	6	5	8	6	16	3	--	46
Acts intended to cause injury	--	1	2	4	17	16	11	3	4	1	1	--	--	--	60
Sexual assault and related	--	--	--	--	--	--	2	2	2	2	1	1	--	--	10
Dangerous or negligent acts endang. persons	--	--	--	--	2	2	4	--	--	--	--	--	--	--	8
Abduction, harassment etc.	--	--	--	--	--	--	3	3	--	2	--	--	--	--	8
Robbery, extortion etc.	--	--	--	--	1	1	9	4	1	--	--	--	--	--	16
Unlawful entry with intent/burglary, B&E	--	--	--	1	4	10	8	1	1	--	--	--	--	--	25
Theft and related	1	3	2	8	15	16	6	2	1	1	--	--	--	--	55
Fraud, deception and related	--	--	--	1	3	11	17	4	3	--	--	--	--	--	39
Illicit drug offences	--	--	1	1	3	10	20	20	20	8	4	3	--	--	90
Weapons and explosives	--	--	--	--	--	1	--	--	--	--	--	--	--	--	1
Property damage and environmental pollution	--	--	1	--	--	--	--	--	--	--	--	--	--	--	1
Public order offences	--	--	--	2	--	--	--	--	--	--	--	--	--	--	2
Traffic and vehicle regulatory offences	--	1	--	5	4	6	3	--	--	--	--	--	--	--	19
Offences against justice procedures etc.	--	9	20	16	8	11	8	--	--	--	--	--	--	--	72
Miscellaneous offences	--	--	--	--	1	--	1	--	--	--	--	--	--	--	2
TOTAL	1	14	26	38	58	85	93	45	37	22	12	20	3	--	454

1. Offences classified under Australian Standard Offence Classification (2008) - see explanatory note (j).

Table 4.1.3 Most serious offence by aggregate sentence imposed - All sentenced inmates in full-time custody

Most serious offence ¹	Aggregate sentence														TOTAL
	< 1 mth	1-<3 mths	3-<6 mths	6-<9 mths	9-<12 mths	1-<2 years	2-< 5 years	5-<7 years	7-< 10 years	10-<15 years	15-<20 years	20 + years	Life	Forensic Patient	
Homicide and related	--	--	--	--	--	4	29	30	57	72	106	275	78	19	670
Acts intended to cause injury	--	4	31	85	178	313	248	93	98	49	10	9	--	17	1135
Sexual assault and related	--	--	1	3	12	35	141	109	171	188	54	38	--	16	768
Dangerous or negligent acts endang. persons	--	--	6	8	22	71	51	8	3	--	--	--	--	--	169
Abduction, harassment etc.	--	1	--	2	5	10	26	23	14	20	2	1	--	--	104
Robbery, extortion etc.	--	--	--	3	4	28	265	159	134	73	14	6	--	5	691
Unlawful entry with intent/burglary, B&E	--	--	4	7	45	170	286	76	41	20	3	4	--	3	659
Theft and related	2	7	23	40	76	114	54	14	13	5	1	--	--	1	350
Fraud, deception and related	--	--	2	6	15	40	59	28	14	4	3	--	--	--	171
Illicit drug offences	1	2	2	5	18	54	189	146	254	161	58	46	13	2	951
Weapons and explosives	--	--	2	2	1	16	29	19	14	5	--	--	--	--	88
Property damage and environmental pollution	1	1	4	1	7	14	12	7	2	2	--	1	--	3	55
Public order offences	--	--	4	8	9	31	15	4	7	2	1	--	--	1	82
Traffic and vehicle regulatory offences	--	2	19	33	81	89	15	--	--	--	--	--	--	--	239
Offences against justice procedures etc.	4	68	171	162	130	275	142	11	7	2	3	6	2	--	983
Miscellaneous offences	--	--	--	--	2	5	7	--	1	2	1	--	4	5	27
TOTAL	8	85	269	365	605	1269	1568	727	830	605	256	386	97	72	7142

1. Offences classified under Australian Standard Offence Classification (2008) - see explanatory note (j).

Table 4.2.1

Most serious offence by aggregate sentence imposed - Sentenced male inmates in full-time custody (percentage)

Most serious offence ¹	Aggregate sentence														TOTAL
	< 1 mth	1-<3 mths	3-<6 mths	6-<9 mths	9-<12 mths	1-<2 years	2-< 5 years	5-<7 years	7-< 10 years	10-<15 years	15-<20 years	20 + years	Life	Forensic Patient	
Homicide and related	--	--	--	--	--	0.3	1.9	3.5	6.6	11.0	41.0	70.8	79.8	26.4	9.3
Acts intended to cause injury	--	4.2	11.9	24.8	29.4	25.1	16.1	13.2	11.9	8.2	3.7	2.5	--	23.6	16.1
Sexual assault and related	--	--	0.4	0.9	2.2	3.0	9.4	15.7	21.3	31.9	21.7	10.1	--	22.2	11.3
Dangerous or negligent acts endang. persons	--	--	2.5	2.4	3.7	5.8	3.2	1.2	0.4	--	--	--	--	--	2.4
Abduction, harassment etc.	--	1.4	--	0.6	0.9	0.8	1.6	2.9	1.8	3.1	0.8	0.3	--	--	1.4
Robbery, extortion etc.	--	--	--	0.9	0.5	2.3	17.4	22.7	16.8	12.5	5.7	1.6	--	6.9	10.1
Unlawful entry with intent/burglary, B&E	--	--	1.6	1.8	7.5	13.5	18.8	11.0	5.0	3.4	1.2	1.1	--	4.2	9.5
Theft and related	14.3	5.6	8.6	9.8	11.2	8.3	3.3	1.8	1.5	0.7	0.4	--	--	1.4	4.4
Fraud, deception and related	--	--	0.8	1.5	2.2	2.4	2.8	3.5	1.4	0.7	1.2	--	--	--	2.0
Illicit drug offences	14.3	2.8	0.4	1.2	2.7	3.7	11.5	18.5	29.5	26.2	22.1	11.7	13.8	2.8	12.9
Weapons and explosives	--	--	0.8	0.6	0.2	1.3	2.0	2.8	1.8	0.9	--	--	--	--	1.3
Property damage and environmental pollution	14.3	1.4	1.2	0.3	1.3	1.2	0.8	1.0	0.3	0.3	--	0.3	--	4.2	0.8
Public order offences	--	--	1.6	1.8	1.6	2.6	1.0	0.6	0.9	0.3	0.4	--	--	1.4	1.2
Traffic and vehicle regulatory offences	--	1.4	7.8	8.6	14.1	7.0	0.8	--	--	--	--	--	--	--	3.3
Offences against justice procedures etc.	57.1	83.1	62.1	44.6	22.3	22.3	9.1	1.6	0.9	0.3	1.2	1.6	2.1	--	13.6
Miscellaneous offences	--	--	--	--	0.2	0.4	0.4	--	0.1	0.3	0.4	--	4.3	6.9	0.4
TOTAL	100	100	100	100	100	100	100	100	100	100	100	100	100	100	100

1. Offences classified under Australian Standard Offence Classification (2008) - see explanatory note (j).

Table 4.2.2 Most serious offence by aggregate sentence imposed - Sentenced female inmates in full-time custody (percentage)

Most serious offence ¹	Aggregate sentence														TOTAL
	< 1 mth	1-<3 mths	3-<6 mths	6-<9 mths	9-<12 mths	1-<2 years	2-< 5 years	5-<7 years	7-< 10 years	10-<15 years	15-<20 years	20 + years	Life	Forensic Patient	
Homicide and related	--	--	--	--	--	1.2	1.1	13.3	13.5	36.4	50.0	80.0	100.0	--	10.1
Acts intended to cause injury	--	7.1	7.7	10.5	29.3	18.8	11.8	6.7	10.8	4.5	8.3	--	--	--	13.2
Sexual assault and related	--	--	--	--	--	--	2.2	4.4	5.4	9.1	8.3	5.0	--	--	2.2
Dangerous or negligent acts endang. persons	--	--	--	--	3.4	2.4	4.3	--	--	--	--	--	--	--	1.8
Abduction, harassment etc.	--	--	--	--	--	--	3.2	6.7	--	9.1	--	--	--	--	1.8
Robbery, extortion etc.	--	--	--	--	1.7	1.2	9.7	8.9	2.7	--	--	--	--	--	3.5
Unlawful entry with intent/burglary, B&E	--	--	--	2.6	6.9	11.8	8.6	2.2	2.7	--	--	--	--	--	5.5
Theft and related	100.0	21.4	7.7	21.1	25.9	18.8	6.5	4.4	2.7	4.5	--	--	--	--	12.1
Fraud, deception and related	--	--	--	2.6	5.2	12.9	18.3	8.9	8.1	--	--	--	--	--	8.6
Illicit drug offences	--	--	3.8	2.6	5.2	11.8	21.5	44.4	54.1	36.4	33.3	15.0	--	--	19.8
Weapons and explosives	--	--	--	--	--	1.2	--	--	--	--	--	--	--	--	0.2
Property damage and environmental pollution	--	--	3.8	--	--	--	--	--	--	--	--	--	--	--	0.2
Public order offences	--	--	--	5.3	--	--	--	--	--	--	--	--	--	--	0.4
Traffic and vehicle regulatory offences	--	7.1	--	13.2	6.9	7.1	3.2	--	--	--	--	--	--	--	4.2
Offences against justice procedures etc.	--	64.3	76.9	42.1	13.8	12.9	8.6	--	--	--	--	--	--	--	15.9
Miscellaneous offences	--	--	--	--	1.7	--	1.1	--	--	--	--	--	--	--	0.4
TOTAL	100	100	100	100	100	100	100	100	100	100	100	100	100	--	100

1. Offences classified under Australian Standard Offence Classification (2008) - see explanatory note (j).

Table 4.2.3

**Most serious offence by aggregate sentence imposed -
All sentenced inmates in full-time custody (percentage)**

Most serious offence ¹	Aggregate sentence														TOTAL
	< 1 mth	1-<3 mths	3-<6 mths	6-<9 mths	9-<12 mths	1-<2 years	2-< 5 years	5-<7 years	7-< 10 years	10-<15 years	15-<20 years	20 + years	Life	Forensic Patient	
Homicide and related	--	--	--	--	--	0.3	1.8	4.1	6.9	11.9	41.4	71.2	80.4	26.4	9.4
Acts intended to cause injury	--	4.7	11.5	23.3	29.4	24.7	15.8	12.8	11.8	8.1	3.9	2.3	--	23.6	15.9
Sexual assault and related	--	--	0.4	0.8	2.0	2.8	9.0	15.0	20.6	31.1	21.1	9.8	--	22.2	10.8
Dangerous or negligent acts endang. persons	--	--	2.2	2.2	3.6	5.6	3.3	1.1	0.4	--	--	--	--	--	2.4
Abduction, harassment etc.	--	1.2	--	0.5	0.8	0.8	1.7	3.2	1.7	3.3	0.8	0.3	--	--	1.5
Robbery, extortion etc.	--	--	--	0.8	0.7	2.2	16.9	21.9	16.1	12.1	5.5	1.6	--	6.9	9.7
Unlawful entry with intent/burglary, B&E	--	--	1.5	1.9	7.4	13.4	18.2	10.5	4.9	3.3	1.2	1.0	--	4.2	9.2
Theft and related	25.0	8.2	8.6	11.0	12.6	9.0	3.4	1.9	1.6	0.8	0.4	--	--	1.4	4.9
Fraud, deception and related	--	--	0.7	1.6	2.5	3.2	3.8	3.9	1.7	0.7	1.2	--	--	--	2.4
Illicit drug offences	12.5	2.4	0.7	1.4	3.0	4.3	12.1	20.1	30.6	26.6	22.7	11.9	13.4	2.8	13.3
Weapons and explosives	--	--	0.7	0.5	0.2	1.3	1.8	2.6	1.7	0.8	--	--	--	--	1.2
Property damage and environmental pollution	12.5	1.2	1.5	0.3	1.2	1.1	0.8	1.0	0.2	0.3	--	0.3	--	4.2	0.8
Public order offences	--	--	1.5	2.2	1.5	2.4	1.0	0.6	0.8	0.3	0.4	--	--	1.4	1.1
Traffic and vehicle regulatory offences	--	2.4	7.1	9.0	13.4	7.0	1.0	--	--	--	--	--	--	--	3.3
Offences against justice procedures etc.	50.0	80.0	63.6	44.4	21.5	21.7	9.1	1.5	0.8	0.3	1.2	1.6	2.1	--	13.8
Miscellaneous offences	--	--	--	--	0.3	0.4	0.4	--	0.1	0.3	0.4	--	4.1	6.9	0.4
TOTAL	100	100	100	100	100	100	100	100	100	100	100	100	100	100	100

1. Offences classified under Australian Standard Offence Classification (2008) - see explanatory note (j).

Table 4.3.1 Most serious offence by aggregate sentence imposed - Sentenced male detainees in periodic detention

Most serious offence ¹	Aggregate sentence (weeks)												TOTAL			
	1 - 20		21 - 40		41 - 60		61 - 80		81 - 100		101 - 120				120+	
	No.	%	No.	%	No.	%	No.	%	No.	%	No.	%	No.	%	No.	%
Homicide and related	--	--	--	--	--	--	--	--	--	--	--	--	--	--	--	--
Acts intended to cause injury	--	--	--	--	--	--	--	--	--	--	--	--	--	--	--	--
Sexual assault and related	--	--	--	--	--	--	--	--	--	--	--	--	--	--	--	--
Dangerous or negligent acts endang. persons	--	--	--	--	--	--	--	--	--	--	--	--	--	--	--	--
Abduction, harassment etc.	--	--	--	--	--	--	--	--	--	--	--	--	--	--	--	--
Robbery, extortion etc.	--	--	--	--	--	--	--	--	--	--	--	--	--	--	--	--
Unlawful entry with intent/burglary, B&E	--	--	1	20.0	--	--	--	--	--	--	--	--	--	1	14.3	--
Theft and related	--	--	--	--	--	--	--	--	--	--	--	--	--	--	--	--
Fraud, deception and related	1	100.0	4	80.0	--	--	--	--	--	--	--	--	--	5	71.4	--
Illicit drug offences	--	--	--	--	--	--	--	--	--	--	1	100.0	--	1	14.3	--
Weapons and explosives	--	--	--	--	--	--	--	--	--	--	--	--	--	--	--	--
Property damage and environmental pollution	--	--	--	--	--	--	--	--	--	--	--	--	--	--	--	--
Public order offences	--	--	--	--	--	--	--	--	--	--	--	--	--	--	--	--
Traffic and vehicle regulatory offences	--	--	--	--	--	--	--	--	--	--	--	--	--	--	--	--
Offences against justice procedures etc.	--	--	--	--	--	--	--	--	--	--	--	--	--	--	--	--
Miscellaneous offences	--	--	--	--	--	--	--	--	--	--	--	--	--	--	--	--
TOTAL	1	100	5	100	--	--	--	--	--	--	1	100	--	7	100	--

1. Offences classified under Australian Standard Offence Classification (2008) - see explanatory note (j).

Table 4.3.2

Most serious offence by aggregate sentence imposed - Sentenced female detainees in periodic detention

Most serious offence ¹	Aggregate sentence (weeks)												TOTAL			
	1 - 20		21 - 40		41 - 60		61 - 80		81 - 100		101 - 120				120+	
	No.	%	No.	%	No.	%	No.	%	No.	%	No.	%	No.	%	No.	%
Homicide and related	--	--	--	--	--	--	--	--	--	--	--	--	--	--	--	--
Acts intended to cause injury	--	--	--	--	--	--	--	--	--	--	--	--	--	--	--	--
Sexual assault and related	--	--	--	--	--	--	--	--	--	--	--	--	--	--	--	--
Dangerous or negligent acts endang. persons	--	--	--	--	--	--	--	--	--	--	--	--	--	--	--	--
Abduction, harassment etc.	--	--	--	--	--	--	--	--	--	--	--	--	--	--	--	--
Robbery, extortion etc.	--	--	--	--	--	--	--	--	--	--	--	--	--	--	--	--
Unlawful entry with intent/burglary, B&E	--	--	--	--	--	--	--	--	--	--	--	--	--	--	--	--
Theft and related	--	--	--	--	--	--	--	--	--	--	--	--	--	--	--	--
Fraud, deception and related	--	--	--	--	--	--	1	100.0	--	--	--	--	--	--	1	100.0
Illicit drug offences	--	--	--	--	--	--	--	--	--	--	--	--	--	--	--	--
Weapons and explosives	--	--	--	--	--	--	--	--	--	--	--	--	--	--	--	--
Property damage and environmental pollution	--	--	--	--	--	--	--	--	--	--	--	--	--	--	--	--
Public order offences	--	--	--	--	--	--	--	--	--	--	--	--	--	--	--	--
Traffic and vehicle regulatory offences	--	--	--	--	--	--	--	--	--	--	--	--	--	--	--	--
Offences against justice procedures etc.	--	--	--	--	--	--	--	--	--	--	--	--	--	--	--	--
Miscellaneous offences	--	--	--	--	--	--	--	--	--	--	--	--	--	--	--	--
TOTAL	--	--	--	--	--	--	1	100	--	--	--	--	--	--	1	100

1. Offences classified under Australian Standard Offence Classification (2008) - see explanatory note (j).

Table 4.3.3 Most serious offence by aggregate sentence imposed - All sentenced detainees in periodic detention

Most serious offence ¹	Aggregate sentence (weeks)												TOTAL			
	1 - 20		21 - 40		41 - 60		61 - 80		81 - 100		101 - 120				120+	
	No.	%	No.	%	No.	%	No.	%	No.	%	No.	%	No.	%	No.	%
Homicide and related	--	--	--	--	--	--	--	--	--	--	--	--	--	--	--	--
Acts intended to cause injury	--	--	--	--	--	--	--	--	--	--	--	--	--	--	--	--
Sexual assault and related	--	--	--	--	--	--	--	--	--	--	--	--	--	--	--	--
Dangerous or negligent acts endang. persons	--	--	--	--	--	--	--	--	--	--	--	--	--	--	--	--
Abduction, harassment etc.	--	--	--	--	--	--	--	--	--	--	--	--	--	--	--	--
Robbery, extortion etc.	--	--	--	--	--	--	--	--	--	--	--	--	--	--	--	--
Unlawful entry with intent/burglary, B&E	--	--	1	20.0	--	--	--	--	--	--	--	--	--	--	1	12.5
Theft and related	--	--	--	--	--	--	--	--	--	--	--	--	--	--	--	--
Fraud, deception and related	1	100.0	4	80.0	--	--	1	100.0	--	--	--	--	--	--	6	75.0
Illicit drug offences	--	--	--	--	--	--	--	--	--	--	1	100.0	--	--	1	12.5
Weapons and explosives	--	--	--	--	--	--	--	--	--	--	--	--	--	--	--	--
Property damage and environmental pollution	--	--	--	--	--	--	--	--	--	--	--	--	--	--	--	--
Public order offences	--	--	--	--	--	--	--	--	--	--	--	--	--	--	--	--
Traffic and vehicle regulatory offences	--	--	--	--	--	--	--	--	--	--	--	--	--	--	--	--
Offences against justice procedures etc.	--	--	--	--	--	--	--	--	--	--	--	--	--	--	--	--
Miscellaneous offences	--	--	--	--	--	--	--	--	--	--	--	--	--	--	--	--
TOTAL	1	100	5	100	--	--	1	100	--	--	1	100	--	--	8	100

1. Offences classified under Australian Standard Offence Classification (2008) - see explanatory note (j).

Table 4.4.1

Most serious offence by time in custody - Unsentenced male inmates in full-time custody

Most serious offence ²	Time in custody ¹														TOTAL	
	< 1 month		1 - < 3 months		3 - < 6 months		6 - < 9 months		9 - < 12 months		1 - < 2 years		2 - < 5 years			
	No.	%	No.	%	No.	%	No.	%	No.	%	No.	%	No.	%	No.	%
Homicide and related	7	1.3	17	2.7	30	6.0	18	6.1	18	9.2	54	17.5	28	43.1	172	6.7
Acts intended to cause injury	212	37.9	216	34.4	115	22.8	62	21.2	35	17.9	47	15.3	3	4.6	690	27.0
Sexual assault and related	34	6.1	50	8.0	59	11.7	32	10.9	23	11.7	31	10.1	7	10.8	236	9.2
Dangerous or negligent acts endang. persons	13	2.3	17	2.7	18	3.6	5	1.7	3	1.5	1	0.3	--	--	57	2.2
Abduction, harassment etc.	11	2.0	16	2.6	13	2.6	10	3.4	6	3.1	10	3.2	--	--	66	2.6
Robbery, extortion etc.	44	7.9	58	9.3	78	15.5	61	20.8	26	13.3	51	16.6	4	6.2	322	12.6
Unlawful entry with intent/burglary, B&E	52	9.3	73	11.6	50	9.9	21	7.2	7	3.6	5	1.6	--	--	208	8.2
Theft and related	38	6.8	10	1.6	2	0.4	--	--	2	1.0	1	0.3	1	1.5	54	2.1
Fraud, deception and related	12	2.1	14	2.2	3	0.6	5	1.7	--	--	3	1.0	--	--	37	1.4
Illicit drug offences	76	13.6	113	18.0	105	20.8	70	23.9	68	34.7	97	31.5	21	32.3	550	21.6
Weapons and explosives	12	2.1	16	2.6	12	2.4	4	1.4	2	1.0	6	1.9	--	--	52	2.0
Property damage and environmental pollution	10	1.8	10	1.6	7	1.4	1	0.3	1	0.5	1	0.3	--	--	30	1.2
Public order offences	4	0.7	--	--	1	0.2	--	--	--	--	--	--	--	--	5	0.2
Traffic and vehicle regulatory offences	8	1.4	4	0.6	--	--	--	--	--	--	--	--	--	--	12	0.5
Offences against justice procedures etc.	24	4.3	9	1.4	3	0.6	2	0.7	4	2.0	1	0.3	--	--	43	1.7
Miscellaneous offences	2	0.4	4	0.6	8	1.6	2	0.7	1	0.5	--	--	1	1.5	18	0.7
TOTAL	559	100	627	100	504	100	293	100	196	100	308	100	65	100	2552	100

1. These statistics may include inmates who completed serving a sentence(s) for other offences(s) during the current imprisonment episode but remained in custody as an unsentenced inmate pending the outcome of other charges or awaiting deportation. The time spent in custody therefore includes any time served under sentence in the current episode.

2. Offences classified under Australian Standard Offence Classification (2008) - see explanatory note (j).

**Table 4.4.2 Most serious offence by time in custody -
Unsentenced female inmates in full-time custody**

Most serious offence ²	Time in custody ¹														TOTAL	
	< 1 month		1 - < 3 months		3 - < 6 months		6 - < 9 months		9 - < 12 months		1 - < 2 years		2 - < 5 years			
	No.	%	No.	%	No.	%	No.	%	No.	%	No.	%	No.	%	No.	%
Homicide and related	1	1.2	2	3.9	--	--	2	8.0	--	--	5	22.7	3	60.0	13	5.8
Acts intended to cause injury	20	23.8	14	27.5	6	20.7	4	16.0	3	30.0	3	13.6	--	--	50	22.1
Sexual assault and related	1	1.2	1	2.0	2	6.9	--	--	--	--	3	13.6	--	--	7	3.1
Dangerous or negligent acts endang. persons	1	1.2	--	--	--	--	--	--	--	--	--	--	--	--	1	0.4
Abduction, harassment etc.	1	1.2	1	2.0	--	--	1	4.0	2	20.0	1	4.5	--	--	6	2.7
Robbery, extortion etc.	10	11.9	4	7.8	2	6.9	1	4.0	1	10.0	--	--	--	--	18	8.0
Unlawful entry with intent/burglary, B&E	6	7.1	4	7.8	3	10.3	2	8.0	--	--	--	--	--	--	15	6.6
Theft and related	11	13.1	2	3.9	--	--	--	--	--	--	1	4.5	--	--	14	6.2
Fraud, deception and related	3	3.6	4	7.8	1	3.4	--	--	--	--	--	--	--	--	8	3.5
Illicit drug offences	14	16.7	17	33.3	14	48.3	15	60.0	3	30.0	9	40.9	2	40.0	74	32.7
Weapons and explosives	4	4.8	--	--	--	--	--	--	--	--	--	--	--	--	4	1.8
Property damage and environmental pollution	1	1.2	--	--	--	--	--	--	--	--	--	--	--	--	1	0.4
Public order offences	1	1.2	--	--	--	--	--	--	--	--	--	--	--	--	1	0.4
Traffic and vehicle regulatory offences	1	1.2	1	2.0	--	--	--	--	--	--	--	--	--	--	2	0.9
Offences against justice procedures etc.	7	8.3	1	2.0	1	3.4	--	--	--	--	--	--	--	--	9	4.0
Miscellaneous offences	2	2.4	--	--	--	--	--	--	1	10.0	--	--	--	--	3	1.3
TOTAL	84	100	51	100	29	100	25	100	10	100	22	100	5	100	226	100

1. These statistics may include inmates who completed serving a sentence(s) for other offences(s) during the current imprisonment episode but remained in custody as an unsentenced inmate pending the outcome of other charges or awaiting deportation. The time spent in custody therefore includes any time served under sentence in the current episode.

2. Offences classified under Australian Standard Offence Classification (2008) - see explanatory note (j).

Table 4.4.3

**Most serious offence by time in custody -
All unsentenced inmates in full-time custody**

Most serious offence ²	Time in custody ¹														TOTAL	
	< 1 month		1 - < 3 months		3 - < 6 months		6 - < 9 months		9 - < 12 months		1 - < 2 years		2 - < 5 years			
	No.	%	No.	%	No.	%	No.	%	No.	%	No.	%	No.	%	No.	%
Homicide and related	8	1.2	19	2.8	30	5.6	20	6.3	18	8.7	59	17.9	31	44.3	185	6.7
Acts intended to cause injury	232	36.1	230	33.9	121	22.7	66	20.8	38	18.4	50	15.2	3	4.3	740	26.6
Sexual assault and related	35	5.4	51	7.5	61	11.4	32	10.1	23	11.2	34	10.3	7	10.0	243	8.7
Dangerous or negligent acts endang. persons	14	2.2	17	2.5	18	3.4	5	1.6	3	1.5	1	0.3	--	--	58	2.1
Abduction, harassment etc.	12	1.9	17	2.5	13	2.4	11	3.5	8	3.9	11	3.3	--	--	72	2.6
Robbery, extortion etc.	54	8.4	62	9.1	80	15.0	62	19.5	27	13.1	51	15.5	4	5.7	340	12.2
Unlawful entry with intent/burglary, B&E	58	9.0	77	11.4	53	9.9	23	7.2	7	3.4	5	1.5	--	--	223	8.0
Theft and related	49	7.6	12	1.8	2	0.4	--	--	2	1.0	2	0.6	1	1.4	68	2.4
Fraud, deception and related	15	2.3	18	2.7	4	0.8	5	1.6	--	--	3	0.9	--	--	45	1.6
Illicit drug offences	90	14.0	130	19.2	119	22.3	85	26.7	71	34.5	106	32.1	23	32.9	624	22.5
Weapons and explosives	16	2.5	16	2.4	12	2.3	4	1.3	2	1.0	6	1.8	--	--	56	2.0
Property damage and environmental pollution	11	1.7	10	1.5	7	1.3	1	0.3	1	0.5	1	0.3	--	--	31	1.1
Public order offences	5	0.8	--	--	1	0.2	--	--	--	--	--	--	--	--	6	0.2
Traffic and vehicle regulatory offences	9	1.4	5	0.7	--	--	--	--	--	--	--	--	--	--	14	0.5
Offences against justice procedures etc.	31	4.8	10	1.5	4	0.8	2	0.6	4	1.9	1	0.3	--	--	52	1.9
Miscellaneous offences	4	0.6	4	0.6	8	1.5	2	0.6	2	1.0	--	--	1	1.4	21	0.8
TOTAL	643	100	678	100	533	100	318	100	206	100	330	100	70	100	2778	100

1. These statistics may include inmates who completed serving a sentence(s) for other offences(s) during the current imprisonment episode but remained in custody as an unsentenced inmate pending the outcome of other charges or awaiting deportation. The time spent in custody therefore includes any time served under sentence in the current episode.

2. Offences classified under Australian Standard Offence Classification (2008) - see explanatory note (j).

Section 5

POPULATION TRENDS

**Table 5.1 Trends in the total inmate population
by place of detention as at 30th June; 1982 to 2013**

Year	FULL-TIME CUSTODY				Periodic Detention Centres	TOTAL POPULATION ³
	Gazetted Correctional Centres	Transitional Centres ¹	Police/Court Complexes ²	Sub-total Full-time custody		
1982	3466	--	--	3466	253	3719
1983	3487	--	--	3487	246	3733
1984	3093	--	--	3093	261	3354
1985	3842	--	--	3842	273	4115
1986	3927	--	--	3927	302	4229
1987	4169	--	--	4169	382	4551
1988	4269	--	--	4269	422	4691
1989	4736	--	--	4736	546	5282
1990	5538	--	--	5538	829	6367
1991	5960	--	--	5960	1143	7103
1992	6228	--	n.a.	6228	1257	7485
1993	6392	--	n.a.	6392	1240	7632
1994	6420	--	n.a.	6420	1291	7711
1995	6384	--	n.a.	6384	1365	7749
1996	6267	--	n.a.	6267	1424	7691
1997	6403	8	n.a.	6411	1546	7957
1998	6475	14	n.a.	6489	1335	7824
1999	7242	17	34	7293	1140	8433
2000	7330	15	2	7347	1202	8549
2001	7735	20	46	7801	1045	8846
2002	7793	23	60	7876	883	8759
2003	8009	26	59	8094	787	8881
2004	8498	29	60	8587	742	9329
2005	8948	27	30	9005	855	9860
2006	9051	27	52	9130	724	9854
2007	9486	28	43	9557	761	10318
2008	9701	30	128	9859	690	10549
2009	10276	29	63	10368	792	11160
2010	10233	35	25	10293	691	10984
2011	9888	28	29	9945	119	10064
2012	9566	27	50	9643	23	9666
2013	9842	20	58	9920	8	9928

1. Transitional Centres commenced operation in September 1996.

2. Corrective Services NSW began managing a small number of Police/Court Complexes in 1992 and operations in this area have increased since 1999. Data on the number of inmates held in these places of detention as at 30 June each year is not available prior to 1999.

3. Total Inmate Population incorporates full-time custody and periodic detention. Prior to 2007 published totals for "Total inmates" included inmates held in gazetted correctional centres and periodic detention centres only and excluded transitional centres and police/court complexes - see explanatory note (b).

**Table 5.2 Trends in the gender of the inmate population;
1982 to 2013 (All inmates - includes periodic detainees)**

Year	FULL-TIME CUSTODY		PERIODIC DETENTION		TOTAL	
	Males	Female	Male	Female	Male	Female
1982	3335	131	247	6	3582	137
1983	3316	171	235	11	3551	182
1984	2936	157	252	9	3188	166
1985	3642	200	265	8	3907	208
1986	3726	201	281	21	4007	222
1987	3961	208	352	30	4313	238
1988	4038	231	398	24	4436	255
1989	4473	263	519	27	4992	290
1990	5197	341	785	44	5982	385
1991	5626	334	1085	58	6711	392
1992	5898	330	1189	68	7087	398
1993	6087	305	1184	56	7271	361
1994	6100	320	1202	89	7302	409
1995	6070	314	1270	95	7340	409
1996	5929	338	1324	100	7253	438
1997	6057	354	1419	127	7476	481
1998	6117	372	1225	110	7342	482
1999	6832	461	1031	109	7863	570
2000	6877	470	1095	107	7972	577
2001	7259	542	967	78	8226	620
2002	7340	536	814	69	8154	605
2003	7565	529	724	63	8289	592
2004	7988	599	683	59	8671	658
2005	8384	621	783	72	9167	693
2006	8450	680	664	60	9114	740
2007	8852	705	682	79	9534	784
2008	9137	722	631	59	9768	781
2009	9587	781	719	73	10306	854
2010	9529	764	638	53	10167	817
2011	9253	692	108	11	9361	703
2012	8977	666	21	2	8998	668
2013	9240	680	7	1	9247	681

Figure 1: Trends in the gender of the inmate population (includes periodic detention) as at 30 June each year

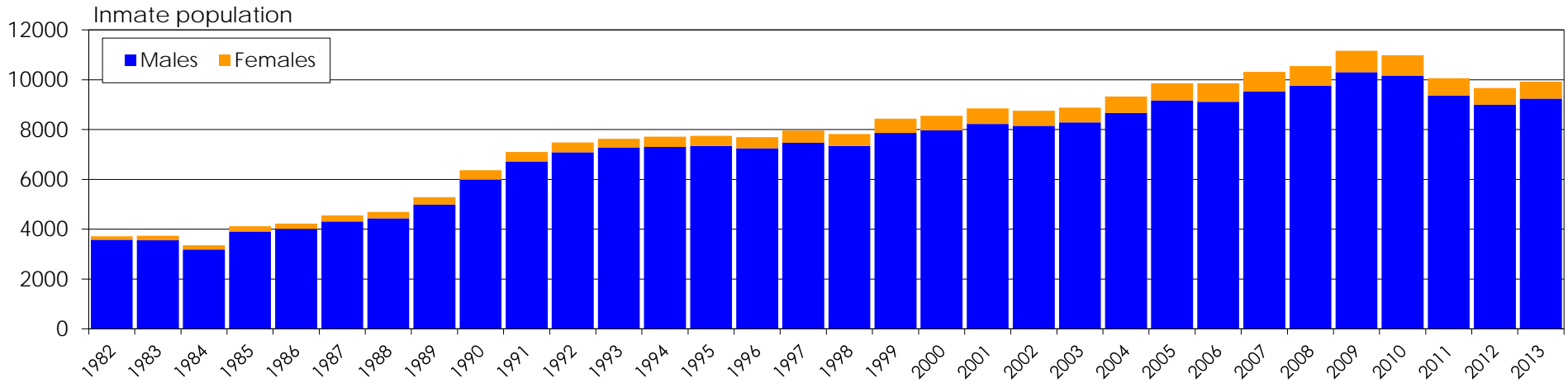
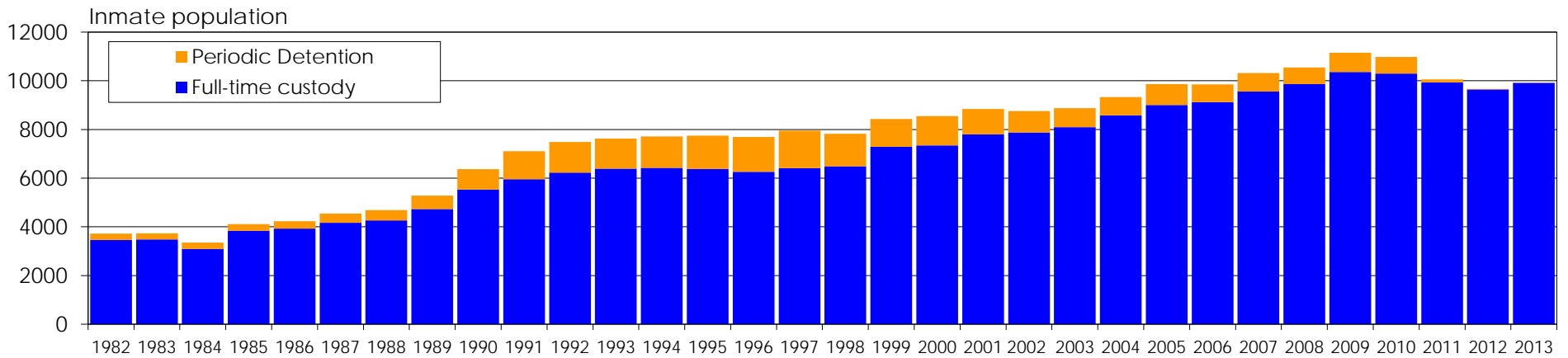


Figure 2: Trends in the inmate custodial program (includes periodic detention) as at 30 June each year



**Table 5.3 Trends in the Aboriginal/Torres Strait Islander ¹ status of inmates;
1982 to 2013 (All inmates - includes periodic detainees)**

Year	Aboriginal/TSI		Non-Aboriginal		Unknown		All inmates
	Number	%	Number	%	Number	%	Number
1982	216	5.8%	3474	93.4%	29	0.8%	3719
1983	236	6.3%	3394	90.9%	103	2.8%	3733
1984	242	7.2%	3047	90.8%	65	1.9%	3354
1985	304	7.4%	3726	90.5%	85	2.1%	4115
1986	338	8.0%	3762	89.0%	129	3.1%	4229
1987	369	8.1%	4105	90.2%	77	1.7%	4551
1988	385	8.2%	4097	87.3%	209	4.5%	4691
1989	415	7.9%	4858	92.0%	9	0.2%	5282
1990	579	9.1%	5510	86.5%	278	4.4%	6367
1991	664	9.3%	6069	85.4%	370	5.2%	7103
1992	648	8.7%	6740	90.0%	97	1.3%	7485
1993	729	9.6%	6809	89.2%	94	1.2%	7632
1994	827	10.7%	6828	88.5%	56	0.7%	7711
1995	888	11.5%	6754	87.2%	107	1.4%	7749
1996	952	12.4%	6598	85.8%	141	1.8%	7691
1997	1010	12.7%	6817	85.7%	130	1.6%	7957
1998	1091	13.9%	6689	85.5%	44	0.6%	7824
1999	1265	15.0%	7142	84.7%	26	0.3%	8433
2000	1249	14.6%	7250	84.8%	50	0.6%	8549
2001	1339	15.1%	7419	83.9%	88	1.0%	8846
2002	1503	17.2%	7166	81.8%	90	1.0%	8759
2003	1563	17.6%	7099	79.9%	219	2.5%	8881
2004	1576	16.9%	7629	81.8%	124	1.3%	9329
2005	1699	17.2%	7874	79.9%	287	2.9%	9860
2006	1966	20.0%	7681	77.9%	207	2.1%	9854
2007	2072	20.1%	8046	78.0%	200	1.9%	10318
2008	2150	20.4%	8153	77.3%	246	2.3%	10549
2009	2382	21.3%	8394	75.2%	384	3.4%	11160
2010	2337	21.3%	8352	76.0%	295	2.7%	10984
2011	2303	22.9%	7744	76.9%	17	0.2%	10064
2012	2243	23.2%	7293	75.5%	130	1.3%	9666
2013	2318	23.3%	7485	75.4%	125	1.3%	9928

1. The method for determining Aboriginality status changed in 2002 - see explanatory note (d).

**Table 5.4 Trends in legal status of inmates (includes periodic detainees);
1982 to 2013**

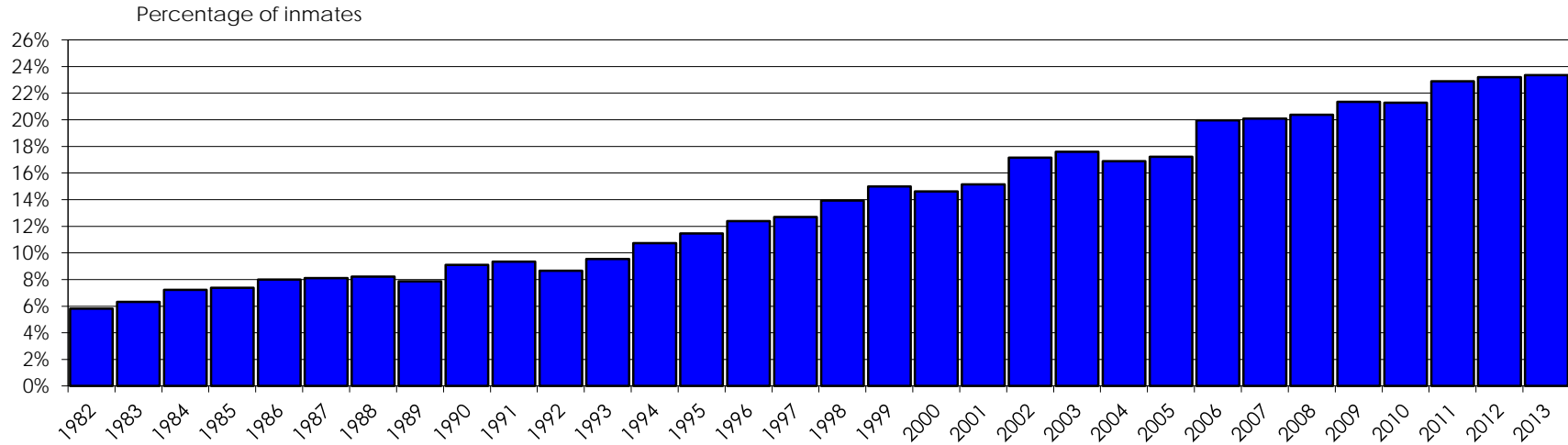
Year	Sentenced ¹		Appellant		Unconvicted ²		Other ³	
	Number	%	Number	%	Number	%	Number	%
1982	3110	83.6%	150	4.0%	456	12.3%	3	0.1%
1983	3098	83.0%	114	3.1%	519	13.9%	2	0.1%
1984	2722	81.2%	150	4.5%	479	14.3%	3	0.1%
1985	3339	81.1%	144	3.5%	629	15.3%	3	0.1%
1986	3477	82.2%	133	3.1%	614	14.5%	5	0.1%
1987	3702	81.3%	181	4.0%	663	14.6%	5	0.1%
1988	3712	79.1%	236	5.0%	734	15.6%	9	0.2%
1989	4193	79.4%	351	6.6%	738	14.0%	--	--
1990	4983	78.3%	535	8.4%	837	13.1%	12	0.2%
1991	5651	79.6%	609	8.6%	839	11.8%	4	0.1%
1992	6056	80.9%	676	9.0%	748	10.0%	5	0.1%
1993	6161	80.7%	691	9.1%	777	10.2%	3	0.0%
1994	6353	82.4%	617	8.0%	736	9.5%	5	0.1%
1995	6487	83.7%	543	7.0%	712	9.2%	7	0.1%
1996	6374	82.9%	513	6.7%	800	10.4%	4	0.1%
1997	6506	81.8%	459	5.8%	987	12.4%	5	0.1%
1998	6343	81.1%	426	5.4%	1048	13.4%	7	0.1%
1999	6519	77.3%	593	7.0%	1281	15.2%	40	0.5%
2000	6488	75.9%	582	6.8%	1434	16.8%	45	0.5%
2001	6636	75.0%	570	6.4%	1605	18.1%	35	0.4%
2002	6599	75.3%	517	5.9%	1634	18.7%	9	0.1%
2003	6580	74.1%	464	5.2%	1831	20.6%	6	0.1%
2004	6870	73.6%	585	6.3%	1870	20.0%	4	0.0%
2005	7381	74.9%	478	4.8%	1994	20.2%	7	0.1%
2006	7342	74.5%	370	3.8%	2136	21.7%	6	0.1%
2007	7658	74.2%	346	3.4%	2307	22.4%	7	0.1%
2008	7726	73.2%	349	3.3%	2469	23.4%	5	0.0%
2009	8213	73.6%	335	3.0%	2593	23.2%	19	0.2%
2010	8204	74.7%	276	2.5%	2502	22.8%	2	0.0%
2011	7125	70.8%	301	3.0%	2635	26.2%	3	0.0%
2012	6902	71.4%	278	2.9%	2486	25.7%	--	--
2013	6868	69.2%	281	2.8%	2778	28.0%	1	0.0%

1. Sentenced includes inmates with a legal status of forensic patient.

2. Unconvicted includes remand/trial and awaiting sentence.

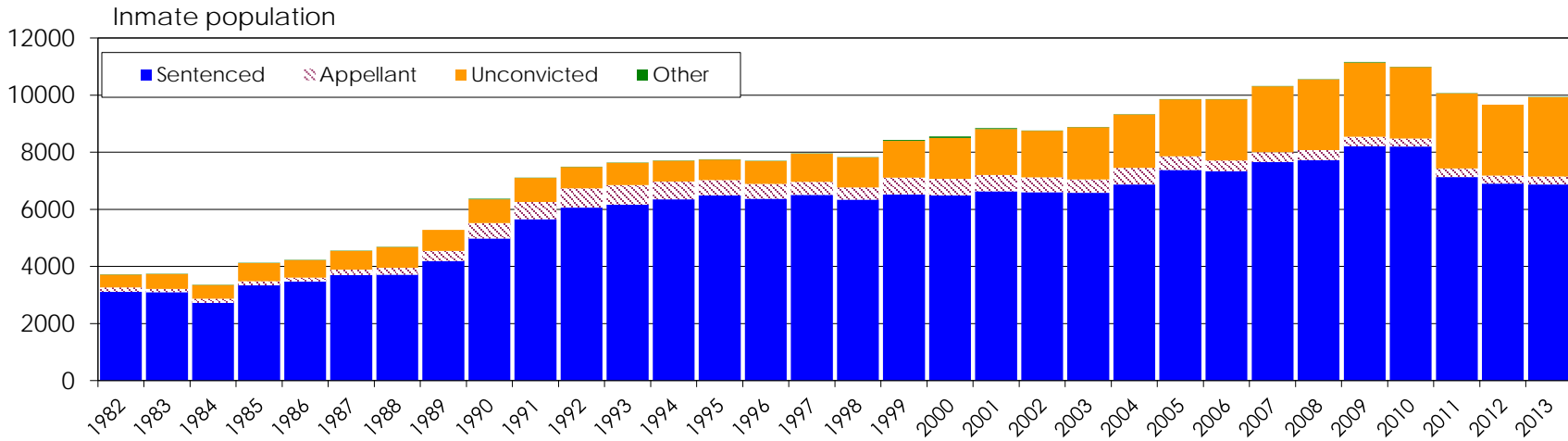
3. Other includes awaiting deportation, awaiting extradition and civil inmates.

Figure 3: Trends in the Aboriginal/Torres Strait Islander inmates (inc. periodic detention) as at 30 June each year



Note: Method for determining Aboriginality status changed in 2002. See explanatory note (d).

Figure 4: Trends in the legal status of inmates (includes periodic detention) as at 30 June each year



Note: Sentenced inmates includes Forensic patients. Other inmates includes awaiting sentence, deportees, extradition and civil inmates

Table 5.5 Trends in the Aboriginal and Torres Strait Islander¹ inmate population - by gender; 1982 to 2013 (All inmates - includes periodic detainees)

Year	Males		Females		Total
	Number	%	Number	%	Number
1982	210	97.2%	6	2.8%	216
1983	226	95.8%	10	4.2%	236
1984	234	96.7%	8	3.3%	242
1985	294	96.7%	10	3.3%	304
1986	325	96.2%	13	3.8%	338
1987	350	94.9%	19	5.1%	369
1988	358	93.0%	27	7.0%	385
1989	382	92.0%	33	8.0%	415
1990	543	93.8%	36	6.2%	579
1991	613	92.3%	51	7.7%	664
1992	599	92.4%	49	7.6%	648
1993	685	94.0%	44	6.0%	729
1994	764	92.4%	63	7.6%	827
1995	831	93.6%	57	6.4%	888
1996	878	92.2%	74	7.8%	952
1997	934	92.5%	76	7.5%	1010
1998	994	91.1%	97	8.9%	1091
1999	1152	91.1%	113	8.9%	1265
2000	1139	91.2%	110	8.8%	1249
2001	1201	89.7%	138	10.3%	1339
2002	1346	89.6%	157	10.4%	1503
2003	1403	89.8%	160	10.2%	1563
2004	1420	90.1%	156	9.9%	1576
2005	1521	89.5%	178	10.5%	1699
2006	1747	88.9%	219	11.1%	1966
2007	1846	89.1%	226	10.9%	2072
2008	1930	89.8%	220	10.2%	2150
2009	2146	90.1%	236	9.9%	2382
2010	2122	90.8%	215	9.2%	2337
2011	2092	90.8%	211	9.2%	2303
2012	2046	91.2%	197	8.8%	2243
2013	2117	91.3%	201	8.7%	2318

1. The method for determining Aboriginality status changed in 2002 - see explanatory note (d).

Table 5.6 Trends in the Aboriginal and Torres Strait Islander¹ inmate population - by gender and custodial program as at 30th June; 1982 to 2013

Year	FULL-TIME CUSTODY							PERIODIC DETENTION						
	Male			Female			Total %	Male			Female			Total %
	ATSI	Non-ATSI ²	% ATSI	ATSI	Non-ATSI ²	% ATSI		ATSI	Non-ATSI ²	% ATSI	ATSI	Non-ATSI ²	% ATSI	
1982	203	3132	6.1%	6	125	4.6%	6.0%	7	240	2.8%	--	6	--	2.8%
1983	220	3096	6.6%	10	161	5.8%	6.6%	6	229	2.6%	--	11	--	2.4%
1984	229	2707	7.8%	8	149	5.1%	7.7%	5	247	2.0%	--	9	--	1.9%
1985	287	3355	7.9%	9	191	4.5%	7.7%	7	258	2.6%	1	7	12.5%	2.9%
1986	319	3407	8.6%	13	188	6.5%	8.5%	6	275	2.1%	--	21	--	2.0%
1987	338	3623	8.5%	16	192	7.7%	8.5%	12	340	3.4%	3	27	10.0%	3.9%
1988	344	3694	8.5%	24	207	10.4%	8.6%	14	384	3.5%	3	21	12.5%	4.0%
1989	357	4116	8.0%	32	231	12.2%	8.2%	25	494	4.8%	1	26	3.7%	4.8%
1990	515	4682	9.9%	35	306	10.3%	9.9%	28	757	3.6%	1	43	2.3%	3.5%
1991	578	5048	10.3%	47	287	14.1%	10.5%	35	1050	3.2%	4	54	6.9%	3.4%
1992	567	5331	9.6%	43	287	13.0%	9.8%	32	1157	2.7%	6	62	8.8%	3.0%
1993	647	5440	10.6%	40	265	13.1%	10.7%	38	1146	3.2%	4	52	7.1%	3.4%
1994	717	5383	11.8%	59	261	18.4%	12.1%	47	1155	3.9%	4	85	4.5%	4.0%
1995	773	5297	12.7%	46	268	14.6%	12.8%	58	1212	4.6%	11	84	11.6%	5.1%
1996	803	5126	13.5%	66	272	19.5%	13.9%	75	1249	5.7%	8	92	8.0%	5.8%
1997	851	5206	14.0%	61	293	17.2%	14.2%	83	1336	5.8%	15	112	11.8%	6.3%
1998	903	5214	14.8%	84	288	22.6%	15.2%	91	1134	7.4%	13	97	11.8%	7.8%
1999	1083	5749	15.9%	107	354	23.2%	16.3%	69	962	6.7%	6	103	5.5%	6.6%
2000	1068	5809	15.5%	99	371	21.1%	15.9%	71	1024	6.5%	11	96	10.3%	6.8%
2001	1126	6133	15.5%	130	412	24.0%	16.1%	75	892	7.8%	8	70	10.3%	7.9%
2002	1276	6064	17.4%	149	387	27.8%	18.1%	70	744	8.6%	8	61	11.6%	8.8%
2003	1355	6210	17.9%	149	380	28.2%	18.6%	48	676	6.6%	11	52	17.5%	7.5%
2004	1377	6611	17.2%	152	447	25.4%	17.8%	43	640	6.3%	4	55	6.8%	6.3%
2005	1472	6912	17.6%	168	453	27.1%	18.2%	49	734	6.3%	10	62	13.9%	6.9%
2006	1705	6745	20.2%	210	470	30.9%	21.0%	42	622	6.3%	9	51	15.0%	7.0%
2007	1779	7073	20.1%	214	491	30.4%	20.9%	67	615	9.8%	12	67	15.2%	10.4%
2008	1866	7271	20.4%	214	508	29.6%	21.1%	64	567	10.1%	6	53	10.2%	10.1%
2009	2071	7516	21.6%	230	551	29.4%	22.2%	75	644	10.4%	6	67	8.2%	10.2%
2010	2066	7463	21.7%	209	555	27.4%	22.1%	56	582	8.8%	6	47	11.3%	9.0%
2011	2080	7173	22.5%	209	483	30.2%	23.0%	12	96	11.1%	2	9	18.2%	11.8%
2012	2045	6932	22.8%	196	470	29.4%	23.2%	1	20	4.8%	1	1	50.0%	8.7%
2013	2116	7124	22.9%	200	480	29.4%	23.3%	1	6	14.3%	1	0	100.0%	25.0%

ATSI - Aboriginal/Torres Strait Islander.

1. The method for determining Aboriginality status changed in 2002. See explanatory note (d).

2. Non-ATSI includes inmates with unknown Aboriginal/Torres Strait Islander status.

Table 5.7 Trends in the security classification of convicted inmates¹ held in full-time custody (excludes periodic detainees); 1983 to 2013

Year	Maximum ²		Medium ³		Minimum ⁴		Unclassified	
	Number	%	Number	%	Number	%	Number	%
1983	956	31.3%	189	6.2%	1702	55.7%	209	6.8%
1984	898	34.4%	268	10.3%	1396	53.5%	49	1.9%
1985	920	28.9%	362	11.4%	1845	57.9%	60	1.9%
1986	1004	30.3%	566	17.1%	1680	50.7%	61	1.8%
1987	871	25.9%	625	18.6%	1868	55.4%	5	0.1%
1988	884	25.2%	701	19.9%	1926	54.8%	3	0.1%
1989	1005	26.6%	770	20.4%	2005	53.0%	--	--
1990	1062	22.6%	866	18.5%	2643	56.4%	118	2.5%
1991	777	15.2%	1102	21.5%	2864	56.0%	374	7.3%
1992	726	13.3%	1306	23.9%	3229	59.0%	214	3.9%
1993	717	12.8%	1195	21.3%	3474	61.9%	226	4.0%
1994	727	12.8%	1102	19.4%	3538	62.3%	312	5.5%
1995	607	10.7%	1066	18.8%	3763	66.4%	229	4.0%
1996	479	8.8%	1149	21.0%	3709	67.9%	126	2.3%
1997	489	9.0%	1126	20.8%	3725	68.7%	79	1.5%
1998	502	9.3%	1094	20.2%	3732	68.9%	92	1.7%
1999	557	9.3%	1184	19.8%	3988	66.8%	243	4.1%
2000	530	9.0%	1191	20.3%	4019	68.5%	128	2.2%
2001	544	8.8%	1185	19.2%	4291	69.6%	141	2.3%
2002	481	7.7%	1141	18.3%	4239	68.0%	372	6.0%
2003	647	10.3%	1212	19.4%	4304	68.8%	94	1.5%
2004	741	11.0%	1329	19.8%	4483	66.8%	160	2.4%
2005	817	11.7%	1359	19.4%	4703	67.1%	125	1.8%
2006	809	11.6%	1287	18.4%	4737	67.8%	155	2.2%
2007	833	11.5%	1352	18.7%	4938	68.2%	120	1.7%
2008	781	10.6%	1399	18.9%	4964	67.2%	241	3.3%
2009	694	8.9%	1364	17.6%	5547	71.5%	151	1.9%
2010	764	9.8%	1464	18.8%	5434	69.8%	127	1.6%
2011	795	10.9%	1381	18.9%	5044	69.0%	87	1.2%
2012	756	10.6%	1425	19.9%	4849	67.8%	127	1.8%
2013	729	10.2%	1475	20.7%	4813	67.4%	124	1.7%

1. Based on legal status (rather than inmate classification).

2. Maximum comprises classifications AA, A1, A2 and E1 and Category 5 (females).

3. Medium comprises classifications B, E2 and Category 4 (females).

4. Minimum comprises inmates classified C1, C2 or C3 and Category 3, Category 2 and Category 1 (females). Includes Compulsory Drug Treatment Centres inmates (from 2007 onwards).

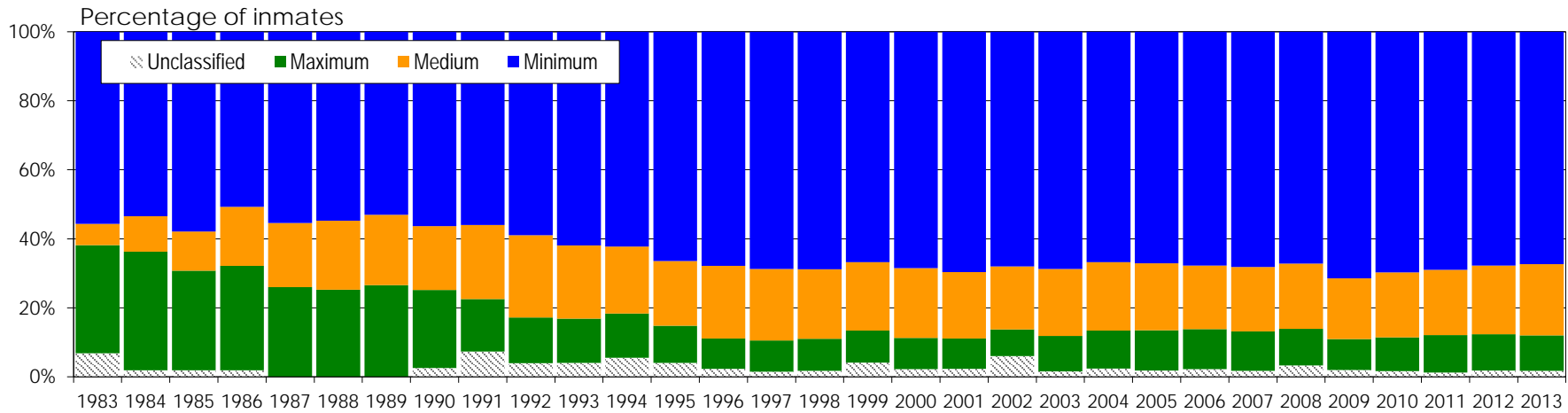
NB: Female specific classification system introduced in 1997.

Table 5.8 Trends in most serious offence (ASOC¹)- All inmates (inc. periodic detainees) ; 1982 to 2013

Year	Homicide and related	Acts intended to cause injury	Sexual assault and related	Dangerous or negligent acts endang. persons	Abduction, harassment and other offences	Robbery, extortion and related	Unlawful entry with intent/burglary, B&E	Theft and related	Fraud, deception and related	Illicit drug offences	Prohibited and regulated weapons and explosives	Property damage and environmental pollution	Public order offences	Traffic and vehicle regulatory offences	Offences against justice procedures etc	Miscellaneous offences
1982	423	231	289	224	22	661	577	443	165	384	14	48	23	130	72	13
1983	362	237	270	150	23	686	664	484	177	391	12	45	19	127	70	16
1984	361	231	204	123	26	646	545	425	148	388	8	36	35	111	57	10
1985	439	239	218	152	34	786	715	423	185	597	12	55	28	122	92	18
1986	429	201	287	146	31	807	693	464	190	670	13	41	18	127	95	17
1987	437	313	300	173	35	711	686	594	224	731	18	58	19	148	86	18
1988	480	377	294	163	38	728	737	604	227	697	25	54	37	119	94	17
1989	477	532	323	169	11	693	864	733	223	723	36	40	58	120	186	94
1990	519	594	466	124	44	746	968	791	274	800	39	66	149	452	232	103
1991	571	684	532	155	58	823	1091	864	333	861	29	85	130	471	316	100
1992	573	711	598	126	48	935	1017	864	371	1013	42	83	136	490	372	106
1993	575	770	678	103	40	1016	1010	766	352	1191	53	80	132	418	337	111
1994	579	801	745	105	38	1075	990	750	378	1203	45	76	117	321	380	108
1995	592	868	743	88	49	1029	942	740	379	1142	28	107	120	377	432	113
1996	633	937	712	106	43	1020	968	748	351	1016	30	70	117	407	426	107
1997	625	1009	701	103	48	1043	972	788	413	1015	24	90	137	424	447	118
1998	659	1031	756	92	57	1073	804	704	394	822	30	64	132	339	743	124
1999	695	1028	732	112	51	1175	871	731	369	862	46	69	138	420	957	177
2000	756	1020	716	111	58	1220	821	692	388	945	50	47	136	506	877	206
2001	801	1192	640	141	64	1346	949	703	327	948	37	65	155	513	789	176
2002	813	1222	585	141	93	1331	848	648	313	942	42	64	156	528	888	145
2003	844	1449	638	126	92	1213	937	625	290	950	67	58	154	566	727	145
2004	861	1473	647	132	106	1164	1046	617	293	1072	101	76	129	565	888	159
2005	876	1685	731	125	103	1110	1029	622	347	1152	126	60	145	664	937	148
2006	881	1587	754	115	130	1069	1012	629	336	1107	97	76	134	698	1056	173
2007	907	1921	819	109	131	1062	993	629	366	1142	102	84	146	653	1131	123
2008	929	1894	934	143	121	1163	941	450	337	1459	123	98	113	655	1100	89
2009	868	2173	983	187	139	1126	1064	515	339	1571	152	99	129	638	1150	27
2010	918	2071	998	187	144	1182	1046	506	313	1617	130	92	114	580	1065	21
2011	920	1777	978	202	142	1104	935	385	254	1546	118	105	93	322	1148	35
2012	870	1683	966	222	156	1063	875	410	233	1486	130	102	79	312	1049	30
2013	855	1875	1011	227	176	1031	883	418	222	1576	144	86	88	253	1035	48

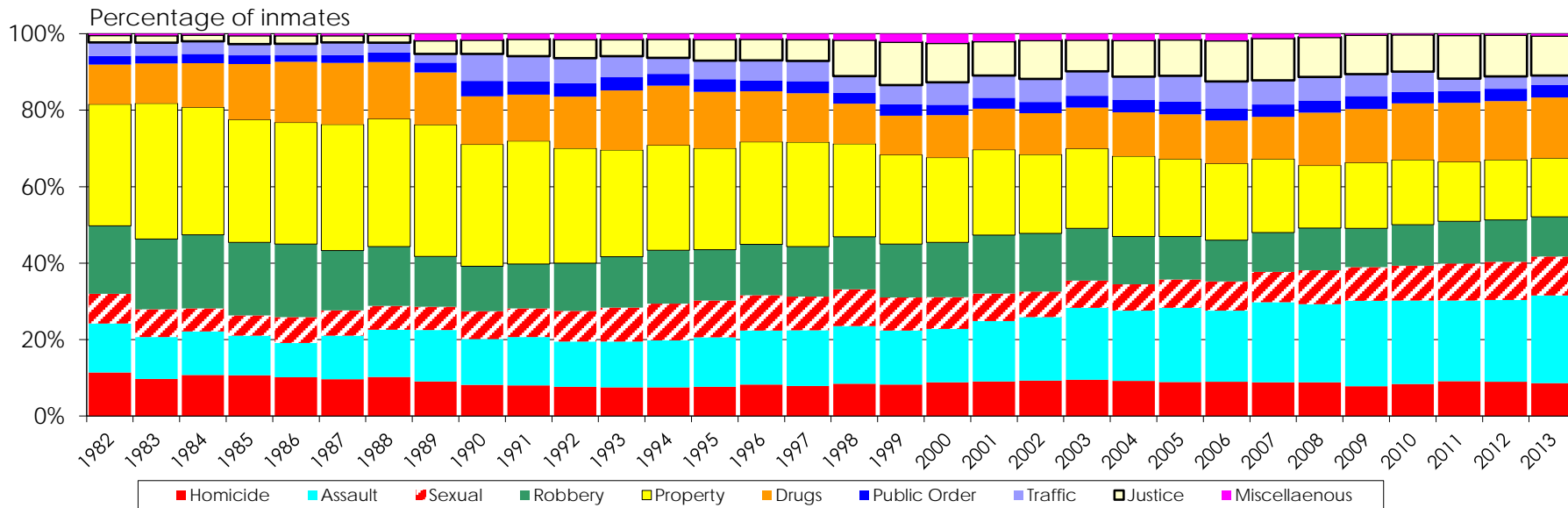
1. Series is based on ASOC 2008. Data for years prior to 1989 are unable to re-classified to ASOC 2008 and are mapped to ASOC Division 1997). Coding of Miscellaneous offences was revised in 2012 and previous year results have been amended. See explanatory notes (j) and (k).

Figure 5: Trends in the classification of convicted inmates (excl. periodic detention) as at 30 June each year



Note: Maximum includes AA, A1, A2 and E1. Medium includes B, E2 and Category 4 females. Minimum includes C1, C2 or C3, Category 1, 2 and 3 (females) and Compulsory Drug Treatment Centre inmates (from 2007 onwards).

Figure 6: Trends in most serious offence¹ (includes periodic detention) as at 30 June each year



1. Categories are based on ASOC 2008 and have been collapsed for presentation purposes (see Appendix 2). Refer to Table 5.8 and explanatory note (k) for details.

**Table 5.9 Trends in the age profile of inmates
(includes periodic detainees); 1982 to 2013**

Year	Under 18 ¹		18 to 24 years		25 to 34 years		35 to 44 years		45 years +	
	Number	%	Number	%	Number	%	Number	%	Number	%
1982	15	0.4%	1463	39.3%	1434	38.6%	538	14.5%	269	7.2%
1983	9	0.2%	1466	39.3%	1477	39.6%	553	14.8%	228	6.1%
1984	6	0.2%	1251	37.3%	1356	40.4%	510	15.2%	231	6.9%
1985	9	0.2%	1464	35.6%	1736	42.2%	629	15.3%	277	6.7%
1986	7	0.2%	1424	33.7%	1776	42.0%	720	17.0%	302	7.1%
1987	13	0.3%	1521	33.4%	1876	41.2%	759	16.7%	382	8.4%
1988	5	0.1%	1551	33.1%	1912	40.8%	820	17.5%	403	8.6%
1989	5	0.1%	1689	32.0%	2135	40.4%	1010	19.1%	443	8.4%
1990	6	0.1%	1996	31.3%	2639	41.4%	1181	18.5%	545	8.6%
1991	--	--	2269	31.9%	2892	40.7%	1328	18.7%	614	8.6%
1992	--	--	2253	30.1%	3056	40.8%	1452	19.4%	724	9.7%
1993	--	--	2174	28.5%	3018	39.5%	1593	20.9%	847	11.1%
1994	1	0.0%	2102	27.3%	3035	39.4%	1644	21.3%	929	12.0%
1995	1	0.0%	2072	26.7%	3023	39.0%	1673	21.6%	980	12.6%
1996	1	0.0%	2081	27.1%	2999	39.0%	1633	21.2%	977	12.7%
1997	--	--	2153	27.1%	3061	38.5%	1641	20.6%	1102	13.8%
1998	--	--	2042	26.1%	3051	39.0%	1644	21.0%	1087	13.9%
1999	2	0.0%	2110	25.0%	3389	40.2%	1792	21.2%	1140	13.5%
2000	1	0.0%	2180	25.5%	3333	39.0%	1807	21.1%	1228	14.4%
2001	--	--	2286	25.8%	3464	39.2%	1882	21.3%	1214	13.7%
2002	--	--	2222	25.4%	3428	39.1%	1962	22.4%	1147	13.1%
2003	1	0.0%	2130	24.0%	3519	39.6%	1986	22.4%	1245	14.0%
2004	--	--	2143	23.0%	3615	38.8%	2178	23.3%	1393	14.9%
2005	23	0.2%	2135	21.7%	3694	37.5%	2439	24.7%	1569	15.9%
2006	21	0.2%	2093	21.2%	3690	37.4%	2457	24.9%	1593	16.2%
2007	22	0.2%	2088	20.2%	3824	37.1%	2688	26.1%	1696	16.4%
2008	28	0.3%	2086	19.8%	3819	36.2%	2779	26.3%	1837	17.4%
2009	21	0.2%	2266	20.3%	3969	35.6%	2956	26.5%	1948	17.5%
2010	29	0.3%	2265	20.6%	3822	34.8%	2840	25.9%	2028	18.5%
2011	21	0.2%	2013	20.0%	3523	35.0%	2530	25.1%	1977	19.6%
2012	15	0.2%	1769	18.3%	3402	35.2%	2550	26.4%	1930	20.0%
2013	21	0.2%	1781	17.9%	3460	34.9%	2655	26.7%	2011	20.3%

1. Corrective Services NSW took management of Kariong Juvenile Correctional Centre in December 2004 accounting for the increase in the number of inmates in this age category reported for (30 June) 2005.

Figure 7: Trends in the age profile of inmates (includes periodic detention) as at 30 June each year

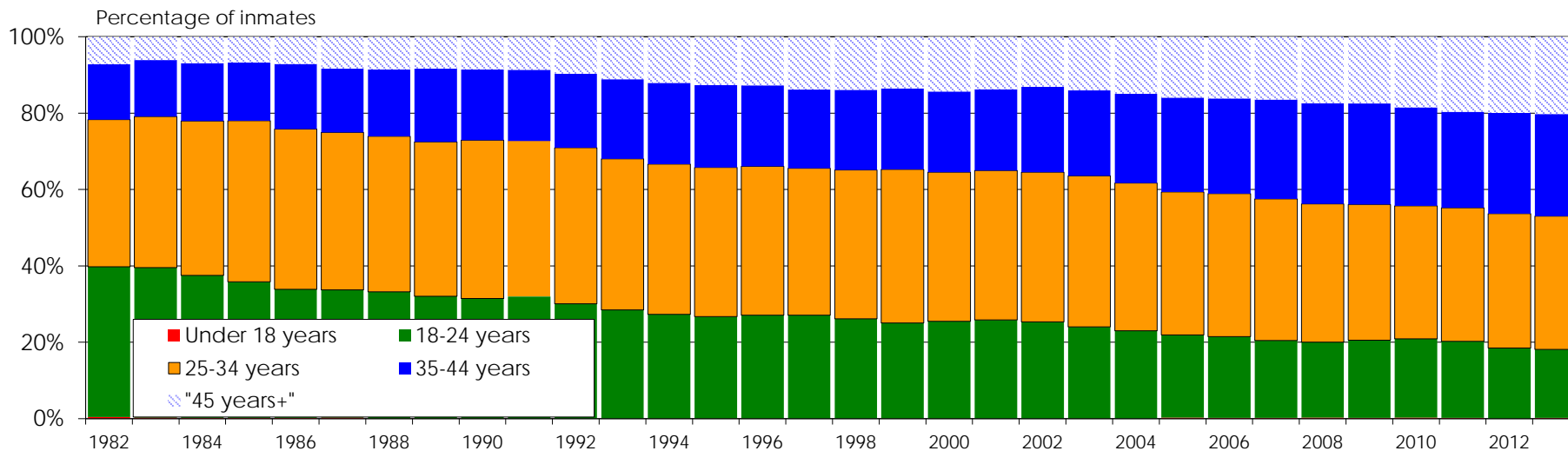
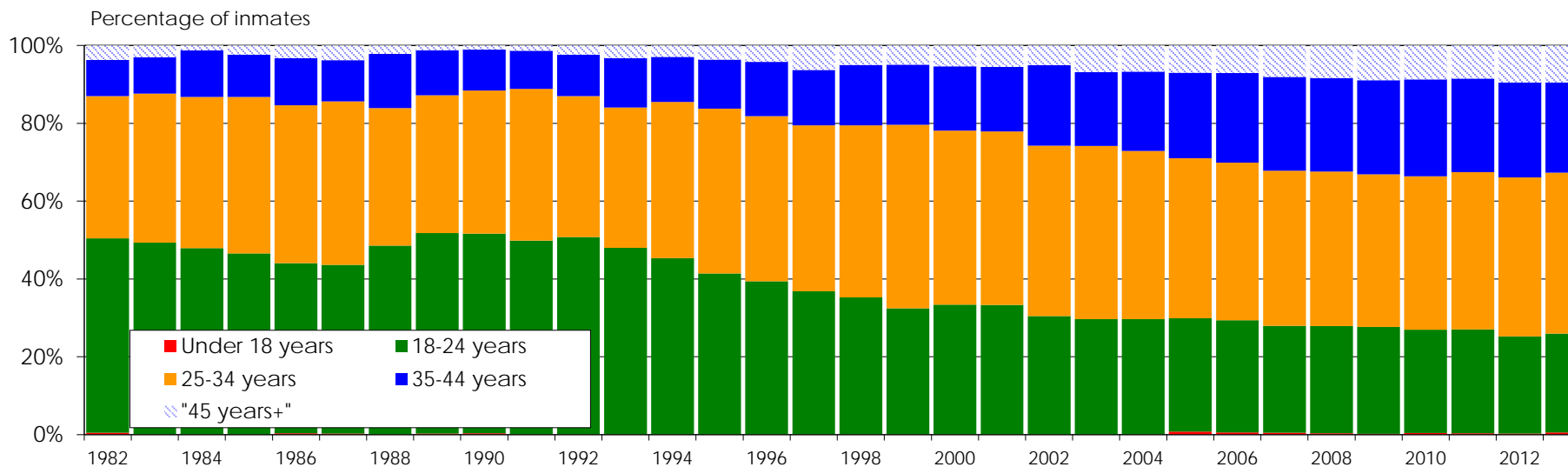


Figure 8: Trends in age profile of Aboriginal inmates (includes periodic detention) as at 30 June each year



APPENDICES

APPENDIX 1

Australian Standard Offence Classification, 2008 (2nd edition)

source: Australian Bureau of Statistics Catalogue No: 1234.0, ABS 2008

Division	Subdivision	Group
1	Homicide and related offences	
11	Murder	111 Murder
12	Attempted murder	121 Attempted murder
13	Manslaughter and driving causing death	131 Manslaughter 132 Driving causing death
2	Acts intended to cause injury	
21	Assault	211 Aggravated assault 212 Non-aggravated assault 213 Common assault
29	Other acts intended to cause injury	291 Stalking 299 Other acts intended to cause injury, nec
3	Sexual assault and related offences	
31	Sexual assault	311 Aggravated sexual assault 312 Non-aggravated sexual assault
32	Non-assaultive sexual offences	321 Non-assaultive sexual offences against a child 322 Child pornography offences 323 Sexual servitude offences 329 Non-assaultive sexual offences, nec
4	Dangerous or negligent acts endangering persons	
41	Dangerous or negligent operation of a vehicle	411 Driving under the influence of alcohol or other substance 412 Dangerous or negligent operation (driving) of a vehicle
49	Other dangerous or negligent acts endangering persons	491 Neglect or ill-treatment of persons under care 499 Other dangerous or negligent acts endangering persons, nec
5	Abduction, harassment and other offences against the person	
51	Abduction and kidnapping	511 Abduction and kidnapping
52	Deprivation of liberty/false imprisonment	521 Deprivation of liberty/false imprisonment
53	Harassment and threatening behaviour	531 Harassment and private nuisance 532 Threatening behaviour
6	Robbery, extortion and related offences	
61	Robbery	611 Aggravated robbery 612 Non-aggravated robbery
62	Blackmail and extortion	621 Blackmail and extortion
7	Unlawful entry with intent/burglary, break and enter	
71	Unlawful entry with intent/burglary, break and enter	711 Unlawful entry with intent/burglary, break and enter

APPENDIX 1

Australian Standard Offence Classification, 2008 (2nd edition)

source: Australian Bureau of Statistics Catalogue No: 1234.0, ABS 2008

Division	Subdivision	Group
8	Theft and related offences	
	81	Motor vehicle theft and related offences
	811	Theft of a motor vehicle
	812	Illegal use of a motor vehicle
	813	Theft of motor vehicle parts or contents
	82	Theft (except motor vehicles)
	821	Theft from a person (excluding by force)
	822	Theft of intellectual property
	823	Theft from retail premises
	829	Theft (except motor vehicles), nec
	83	Receive or handle proceeds of crime
	831	Receive or handle proceeds of crime
	84	Illegal use of property (except motor vehicles)
	841	Illegal use of property (except motor vehicles)
9	Fraud, deception and related offences	
	91	Obtain benefit by deception
	911	Obtain benefit by deception
	92	Forgery and counterfeiting
	921	Counterfeiting of currency
	922	Forgery of documents
	923	Possess equipment to make false/illegal instrument
	93	Deceptive business/government practices
	931	Fraudulent trade practices
	932	Misrepresentation of professional status
	933	Illegal non-fraudulent trade practices
	99	Other fraud and deception offences
	991	Dishonest conversion
	999	Other fraud and deception offences, nec
10	Illicit drug offences	
	101	Import or export illicit drugs
	1011	Import illicit drugs
	1012	Export illicit drugs
	102	Deal or traffic in illicit drugs
	1021	Deal or traffic in illicit drugs - commercial quantity
	1022	Deal or traffic in illicit drugs - non-commercial quantity
	103	Manufacture or cultivate illicit drugs
	1031	Manufacture illicit drugs
	1032	Cultivate illicit drugs
	104	Possess and/or use illicit drugs
	1041	Possess illicit drugs
	1042	Use illicit drugs
	109	Other illicit drug offences
	1099	Other illicit drug offences, nec
11	Prohibited and regulated weapons and explosives offences	
	111	Prohibited weapons/explosives offences
	1111	Import or export prohibited weapons/explosives
	1112	Sell, possess and/or use prohibited weapons/explosives
	1119	Prohibited weapons/explosives offences, nec

APPENDIX 1

Australian Standard Offence Classification, 2008 (2nd edition)

source: Australian Bureau of Statistics Catalogue No: 1234.0, ABS 2008

Division	Subdivision	Group
11	Prohibited and regulated weapons and explosives offences	
	112 Regulated weapons/explosives offences	
	1121	Unlawfully obtain or possess regulated weapons/explosives
	1122	Misuse of regulated weapons/explosives
	1123	Deal or traffic regulated weapons/explosives offences
	1129	Regulated weapons/explosives offences, nec
12	Property damage and environmental pollution	
	121 Property damage	
	1211	Property damage by fire or explosion
	1212	Graffiti
	1219	Property damage, nec
	122 Environmental pollution	
	1221	Air pollution offences
	1222	Water pollution offences
	1223	Noise pollution offences
	1224	Soil pollution offences
	1229	Environmental pollution, nec
13	Public order offences	
	131 Disorderly conduct	
	1311	Trespass
	1312	Criminal intent
	1313	Riot and affray
	1319	Disorderly conduct, nec
	132 Regulated public order offences	
	1321	Betting and gambling offences
	1322	Liquor and tobacco offences
	1323	Censorship offences
	1324	Prostitution offences
	1325	Offences against public order sexual standards
	1326	Consumption of legal substances in regulated spaces
	1329	Regulated public order offences, nec
	133 Offensive conduct	
	1331	Offensive language
	1332	Offensive behaviour
	1333	Vilify or incite hatred on racial, cultural, religious or ethnic grounds
	1334	Cruelty to animals
14	Traffic and vehicle regulatory offences	
	141 Driver Licence offences	
	1411	Drive while licence disqualified or suspended
	1412	Drive without a licence
	1419	Driver licence offences, nec
	142 Vehicle registration and roadworthiness offences	
	1421	Registration offences
	1422	Roadworthiness offences
	143 Regulatory driving offences	
	1431	Exceed the prescribed content of alcohol or other substance limit
	1432	Exceed the legal speed limit
	1433	Parking offences
	1439	Regulatory driving offences, nec
	144 Pedestrian offences	
	1441	Pedestrian offences

APPENDIX 1

Australian Standard Offence Classification, 2008 (2nd edition)

source: Australian Bureau of Statistics Catalogue No: 1234.0, ABS 2008

Division	Subdivision	Group
15	Offences against justice procedures, government security, and government operations	
151	Breach of custodial order offences	
	1511	Escape custody offences
	1512	Breach of home detention
	1513	Breach of suspended sentence
152	Breach of community-based orders	
	1521	Breach of community service order
	1522	Breach of parole
	1523	Breach of bail
	1524	Breach of bond - probation
	1525	Breach of bond - other
	1529	Breach of community-based order, nec
153	Breach of violence and non-violence orders	
	1531	Breach of violence order
	1532	Breach of non-violence order
154	Offences against government operations	
	1541	Resist or hinder govt. official (exc. police, justice officl. or govt. security officer)
	1542	Bribery involving government officials
	1543	Immigration offences
	1549	Offences against government operations, nec
155	Offences against government security	
	1551	Resist or hinder government officer concerned with government security
	1559	Offences against government security, nec
156	Offences against justice procedures	
	1561	Subvert the course of justice
	1562	Resist or hinder police officer or justice official
	1563	Prison regulation offences
	1569	Offences against justice procedures, nec
16	Miscellaneous offences	
161	Defamation, libel and privacy offences	
	1611	Defamation and libel
	1612	Offences against privacy
162	Public health and safety offences	
	1621	Sanitation offences
	1622	Disease prevention offences
	1623	Occupational health and safety offences
	1624	Transport regulation offences
	1625	Dangerous substances offences
	1626	Licit drug offences
	1629	Public health and safety offences, nec
163	Commercial/industry/financial regulation	
	1631	Commercial/industry/financial regulation
169	Other miscellaneous offences	
	1691	Environmental regulation offences
	1692	Bribery excluding government officials
	1693	Quarantine offences
	1694	Import/export regulations
	1695	Procure or commit illegal abortion
	1699	Other miscellaneous offences, nec

APPENDIX 2

Offence grouping for trends

Category of most serious offence (trends) ASOC Division

Homicide

Homicide and related offences

Assault

Acts intended to cause injury

Dangerous or negligent acts endangering persons

Abduction, harassment and other offences against the person

Sexual assault

Sexual assault and related offences

Robbery

Robbery, extortion and related offences

Property

Unlawful entry with intent/burglary, break and enter

Theft and related offences

Fraud, deception and related offences

Drugs

Illicit drug offences

Public Order

Prohibited and regulated weapons and explosives offences

Property damage and environmental pollution

Public order offences

Traffic

Traffic and vehicle regulatory offences

Justice order

Offences against justice procedures, government security, and government operations

Miscellaneous

Miscellaneous offences

Corrections Research Evaluation & Statistics
Corrective Services NSW
GPO Box 31
Sydney NSW Australia

Telephone (02) 8346 1556

Facsimile (02) 8346 1590

Email: research.enquiries@dcs.nsw.gov.au

Material published by
Corrections Research Evaluation & Statistics includes
Research Publications
Research Bulletins
Research Digests
Statistical Publications