



Statistical Publication

Inmate Statistics
(Weekly States)
July 1993 to June 1994

Sylviane Mariasson & Simon Eyland

Statistical Publication No.8
September 1994
ISSN 0814 1215

NSW Department of Corrective Services

TABLE OF CONTENTS

Tables of Contents	i
Acknowledgments	ii
Introduction	1
Daily average number of inmates in NSW	7
Trends in the inmate population 1971-1994	8
Inmates in full-time custody and periodic detention orders	10
Status of inmates in full-time custody	12
Sex of inmates in full-time custody	16
Periodic detainees - Total orders and number attending	18
Classification of institution in which inmates are held	20
Number of appellants in full-time custody	22
Segregation and protection	24
Number of fine defaulters in full-time custody	26
Number of Unsentenced Inmates less Appellants	28
Profile on last Sunday of June 1994	30
Institutional security - percentage on last Sunday of June 1994	31
Periodic Detainees - Attendance and reasons for non-attendance	32
Weekly states - First Sunday of each month	33

ACKNOWLEDGEMENTS

We wish to thank the staff of the Research and Statistics Unit involved with the compilation of these statistics: Nicolle Tierney who collected and collated the information and typed the returns; Barbara Thompson for editing the report and checking returns: as well as Margaret Bowery and Antonia Barila who also checked the returns.

We also wish to thank the Deputy Governors and the Clerks of each institution who provide their Correctional Centre's Weekly State on a regular basis.

INTRODUCTION

This is the tenth annual collection of inmate statistics derived from the Weekly States reports. The "Weekly States" is a statistical collection of information about the inmate population of each correctional centre in NSW as at midnight Sunday each week. As for previous years, this information is categorised in terms of the correctional centre, the sex of the inmate, and whether the inmate is being held under sentence (sentenced to terms of imprisonment, life sentence, forensic patient, fine defaulter) or not under sentence (remand, trial, appellant, deportee). Totals for inmates in full-time custody are separated from periodic detainees (those who undergo week-end detention). Two counts are provided for periodic detainees: a count of those who actually attend periodic detention during any week; and a count of the number of people with live periodic detention orders held by the Department. Each week's total state is compared with the highest and lowest weekly states in the previous twelve months, as well as with the total weekly state of the previous week. Information on the numbers held on segregation, protection, the number of appellants and the number of juveniles (aged under 18 years) is presented. Accommodation details including a comparison of the design accommodation of the institution with the number of inmates held are also provided. Since November 1991 information is also presented on the number of fine defaulters (inmates in custody for the sole reason of default of fine) and the numbers held on remand or for trial.

The "Weekly States" is, as the name implies, issued on a weekly basis. The purpose of this annual collection is to present information from these Weekly States statistical reports in a more convenient format to facilitate those interested in examining trends. Tables and graphs portraying weekly totals of:

- full-time custody versus periodic detainees;
- sentenced versus unsentenced;
- males versus females;
- male periodic detainees versus female periodic detainees;
- those held in maximum versus medium versus minimum security institutions;
- appellants;
- inmates held under protection or segregation;
- fine defaulters

for each Sunday in the 1993-94 financial year are provided in this publication. In addition, individual Weekly States returns for the first Sunday in each month as well as the last Sunday in the financial year are reproduced. To place the 1993-94 figures in context, a summary of NSW inmate population trends since 1971 is also provided.

The information in this publication replaces any figures previously released.

Trends in Inmate Numbers

The daily average of 6423 inmates in full-time custody (excluding periodic detainees) for 1993-94 is the highest recorded. During this year the inmate population varied from a low of 6255 to a high of 6526 inmates. It is of interest to note that the lowest inmate population 6255 for this year was again higher than the inmate population at any time prior to June 1991.

The number of sentenced male inmates (about 75% of the total inmate population) rose to a maximum of 4943 on 19th December, 1993 and fell to a yearly minimum of 4742 on 30th January, 1994 only to rise again to be 97 higher in June 1994, than at the start of the financial year in July 1993.

The number of unsentenced male inmates fell from a maximum of 1395 on 25th July 1993 to a minimum of 1126 on 26th December 1993, eventually finishing 92 lower in June 1994 than the number beginning the financial year in July 1993.

Other trends of note included:

- There was little variation in the number of sentenced female inmates (a difference between maximum and minimum number of inmates of only 41) or unsentenced female inmates (a difference of only 40);
- the number of appellants has remained at a lower level since a large fall in December 1994;
- the number of male remands, trials and deportees remained relatively constant during the first half of the year, dropped just before Christmas, rose to a peak at the end of March and then remained fairly constant until the end of the financial year;
- the number of males with periodic detention orders remained relatively constant for the financial year with only an increase of 52 by the end of the financial year;
- the number of females with periodic detention orders increased from 62 to 88 during the year;
- numbers on segregation were generally slightly lower after August 1993;
- numbers on protection fluctuated throughout the year between 423 and 499;
- the number of fine defaulters decreased to almost zero as a moratorium was placed on the execution of fine default warrants from 31st March 1994 to 30th June 1994;

Thus, at the end of the year, the total number of males and females was similar to the number at the beginning of the year.

Changes in the size of various components of the inmate population in recent years
Number present on last Sunday of financial year

	<i>This year 26.6.94</i>	<i>1 year earlier 27.6.93</i>	<i>2 years earlier 28.6.92</i>	<i>5 years earlier 25.6.89</i>
Full-time custody	6409	6386	6201	4742
Unsentenced	1328	1416	1286	1022
Sentenced	5081	4970	4915	3720
Males	6098	6080	5876	4486
Females	311	306	325	256
Maximum Security ⁽¹⁾⁽²⁾	1757	2110	2228	2042
Medium Security ⁽¹⁾⁽²⁾	1826	2147	1915	1490
Minimum Security ⁽¹⁾	2826	2129	2058	1210
Juveniles	1	0	0	5
Segregation	29	47	34	44
Protection	449	425	539	582
Appellants	569	639	571	262
P.D.C. ⁽³⁾	1344	1272	1324	562
Male P.D.C. ⁽³⁾	1256	1213	1250	536
Female P.D.C. ⁽³⁾	88	59	74	26

(1) These figures refer to the security classifications of the institutions in which the inmates were held. They do **not** refer to individual inmate security classifications.

(2) By the end of the 1992/93 financial year John Morony had been reclassified from maximum security to minimum security, Tamworth from maximum to medium and Cessnock from medium to minimum security. These security classification changes were not made on the Weekly States until 4th July, 1993. Parklea Correctional Centre was reclassified from maximum security to medium on 14.10.90.

(3) These are numbers of people with periodic detention orders. Counting rules for periodic detention orders changed during 1990-91. For further information on the way in which these counting rules changed, refer to "Prisoner Statistics (Weekly States) July 1990 to June 1991".

Percentage growth in various components of the inmate population in recent years

	Growth in past year 27.6.93 to 26.6.94	Growth in past 2 years 28.6.92 to 26.6.94	Growth in past 5 years 25.6.89 to 26.6.94
Full-time custody	+ 0.4%	+ 3.4%	+ 35.2%
Unsentenced	- 6.2%	+ 3.3%	+ 29.9%
Sentenced	+ 2.2%	+ 3.4%	+ 36.6%
Males	+ 0.3%	+ 3.8%	+ 35.9%
Females	+ 1.6%	- 4.3%	+ 21.5%
Maximum Security (1)(2)	- 16.7%	- 21.1%	- 14.0%
Medium Security (1)(2)	- 15.0%	- 4.6%	+ 22.6%
Minimum Security (1)	+ 32.7%	+ 37.3%	+ 133.6%
Segregation	- 38.3%	- 14.7%	- 34.1%
Protection	+ 5.6%	- 16.7%	- 22.9%
Appellants	- 11.0%	- 0.4%	+ 117.2%
P.D.C. (3)	+ 5.7%	+ 1.5%	+ 139.1%
Male P.D.C. (3)	+ 3.5%	+ 0.5%	+ 134.3%
Female P.D.C. (3)	+ 49.2%	+ 18.9%	+ 238.5%

(1) These figures refer to the security classifications of the institutions in which the inmates were held. They do **not** refer to individual inmate security classifications.

(2) By the end of the 1992/93 financial year John Morony had been reclassified from maximum security to minimum security, Tamworth from maximum to medium and Cessnock from medium to minimum security. These security classification changes were not made on the Weekly States until 4th July, 1993. Parklea Correctional Centre was reclassified from maximum security to medium on 14.10.90.

(3) These are numbers of people with periodic detention orders. Counting rules for periodic detention orders changed during 1990-91. For further information on the way in which these counting rules changed, refer to "Prisoner Statistics (Weekly States) July 1990 to June 1991".

Highlights of 1993/94 Inmate Statistics

- ☛ The daily average of 6423 inmates in full-time custody (excluding periodic detainees) is the highest recorded.
- ☛ There were 242 inmates in full-time custody more each day, on average, in 1993/94 than there were on average in 1992/93.
- ☛ There were 711 inmates in full-time custody more each day, on average in 1993/94 than three years ago in 1990/91.
- ☛ The lowest inmate population (6255) for 1993/94 was higher than the inmate population at any time prior to June 1991.
- ☛ The numbers in full-time custody climbed from 6386 on 27.6.93 to 6409 on 26.6.94.
- ☛ The number of male sentenced inmates rose from 4724 on 25.7.93 to 4943 on 19.12.93, fell to 4742 at the end of January 1994 and rose again to 4933 on 5.6.94., yet fell to 4872 by the end of the financial year.
- ☛ The number of male inmates in full-time custody rose from 6080 on 27.6.93 to 6098 on 26.6.94.
- ☛ The number of female inmates in full-time custody fluctuated between 273 and 325.
- ☛ The number of inmates held on protection fluctuated between 423 and 499.
- ☛ The number of inmates held on segregation decreased from a maximum of 60 on 15.8.93 to a low of 28 on 17.4.94.

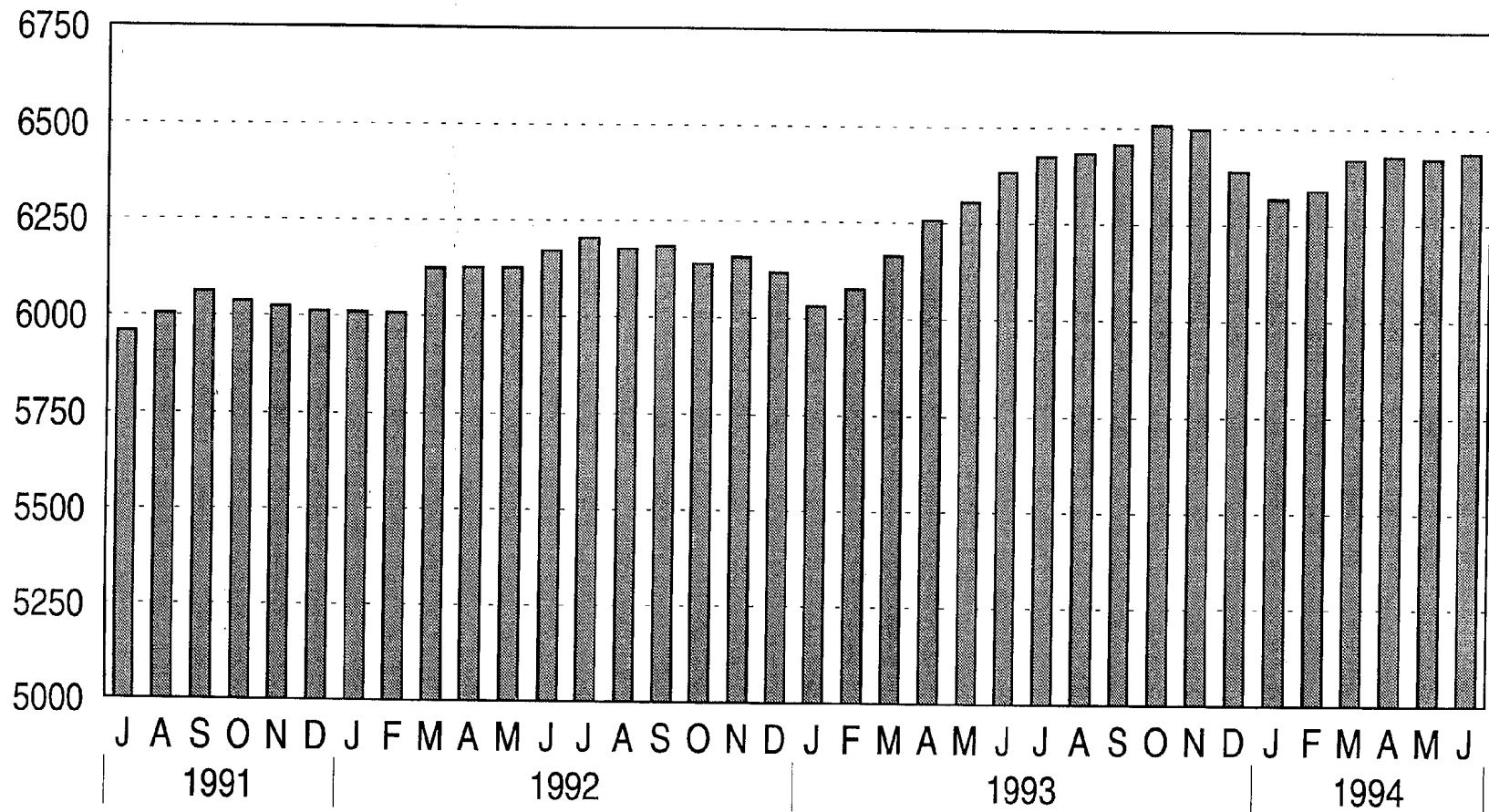
The table on page 5 provides comparisons between the numbers held at the end of different financial years. However, even within the twelve month period of this report, other significant fluctuations occurred in the size of the inmate population. The variation in the total number of inmates in full-time custody during 1993-94 was 271, approximately the design capacity of a smaller correctional centre like John Morony Correctional Centre (250). It is interesting to also note the size of the fluctuations within different section of the inmates population: male sentenced (219), male unsentenced (269), female sentenced (41), female unsentenced (40), maximum security (103), medium security (186), and minimum security (238).

The number of inmates on protection also varied by 76 during the year. On the last Sunday of the financial year protection inmates comprised 7.0% of the total number of inmates in full-time custody. Inmates on protection and segregation pose a special burden on the resources of the correctional system, both in terms of appropriate accommodation and the provision of services. When the Research and Statistics Unit began monitoring the number of inmates on protection in January 1986 there were only 259, by June 1991 this had increased to 629, by the end of June 1992 this number had fallen to 539 and by the end of June 1994 this number had increased to 449.

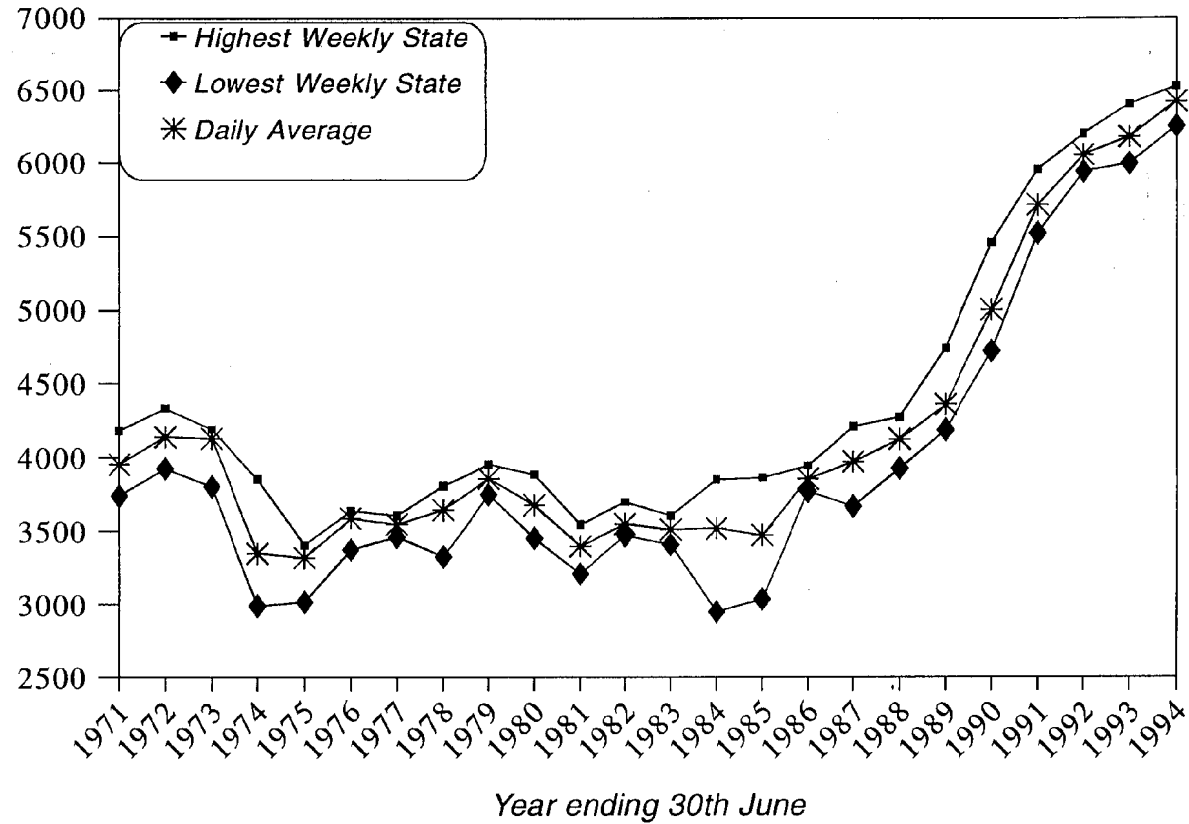
At the beginning of the financial year correctional centre accommodation designed for 6178 inmates (including accommodation for 112 inmates in the Prison Hospital, for 7 inmates in Prince Henry Annexe and for 27 inmates in the Special Care Unit) was in use. By the end of the financial year this had increased to accommodation designed for 6296 inmates.

Daily Average Number of Inmates in NSW

(Excluding Periodic Detainees)



Trends in the Inmate Population 1971 to 1994



Prepared by: Research & Statistics Unit, NSW Department of Corrective Services.

Annual Trends in the Inmate Population since 1971 to 1994

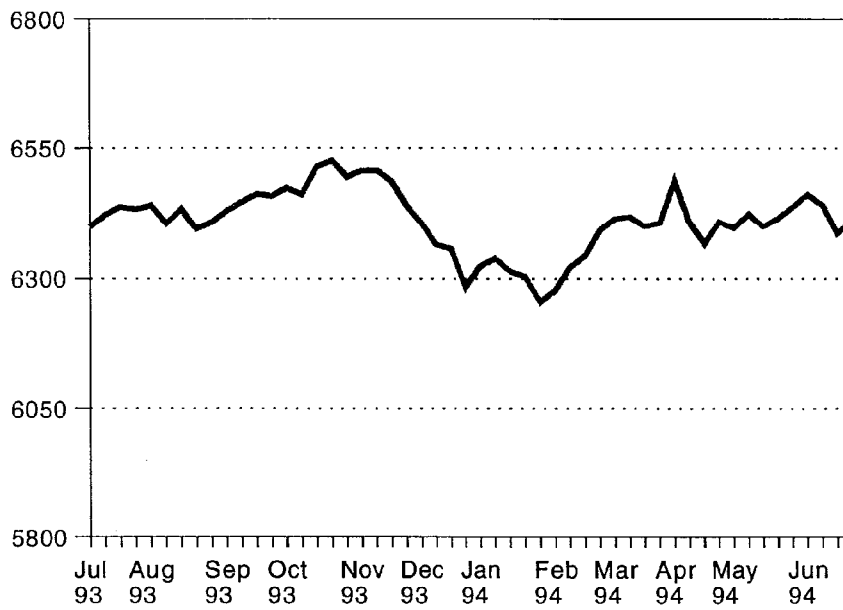
Year Ending 30 June	Daily Average ⁽¹⁾	Rate per 100,000 NSW Population ⁽²⁾	% Change from last year	Lowest Weekly State ⁽³⁾	Highest Weekly State ⁽³⁾	Difference	
						No.	% of Average
1971 ⁽⁴⁾	3953	85.9	-	3739	4182	443	11.2%
1972 ⁽⁴⁾	4141	86.4	+ 4.8%	3926	4333	407	9.8%
1973 ⁽⁴⁾	4130	85.7	- 0.3%	3803	4192	389	9.4%
1974	3348	68.8	- 18.9%	2988	3854	866	25.9%
1975	3318	67.5	- 0.9%	3015	3405	390	11.8%
1976	3587	72.5	+ 8.1%	3373	3637	264	7.4%
1977	3547	71.2	- 1.1%	3462	3605	143	4.0%
1978	3645	72.5	+ 2.8%	3326	3808	482	13.2%
1979	3858	75.9	+ 5.8%	3749	3952	203	5.3%
1980	3677	71.5	- 4.7%	3453	3885	432	11.7%
1981	3398	65.3	- 7.6%	3208	3546	338	9.9%
1982	3549	67.3	+ 4.4%	3471	3699	228	6.4%
1983	3511	65.8	- 1.1%	3408	3605	197	5.6%
1984	3518	65.3	+ 0.2%	2948	3851	903	25.7%
1985	3473	63.8	- 1.3%	3034	3862	828	23.8%
1986	3854	70.1	+ 11.0%	3767	3943	176	4.6%
1987	3971	71.3	+ 3.0%	3668	4210	542	13.6%
1988	4124	72.9	+ 3.9%	3925	4271	346	8.4%
1989	4358	75.9	+ 5.7%	4187	4742	555	12.7%
1990	5002	86.3	+ 14.8%	4722	5457	735	14.7%
1991	5712	97.4	+ 14.2%	5521	5956	435	7.6%
1992	6056	102.1 ⁽⁵⁾	+ 6.0%	5940	6201	261	4.3%
1993	6181	103.2 ⁽⁵⁾	+ 2.1%	5995	6405	410	6.6%
1994	6423	106.4 ⁽⁵⁾	+ 3.9%	6255	6526	271	4.2%
Average	4181	78.0	+ 2.4%	3953	4380	427	10.2%

- (1) Excluding the number in Periodic Detention.
- (2) Based on Australian Bureau of Statistics estimates of the mean resident population of New South Wales for the relevant financial year (Catalogue No. 3101.0).
- (3) Taken at midnight each Sunday, excluding Periodic Detainees.
- (4) For calendar year ending 31 December.
- (5) Preliminary figures.

Weekly States July 1993 - June 1994
Inmates in Full-time Custody and with Periodic Detention Orders

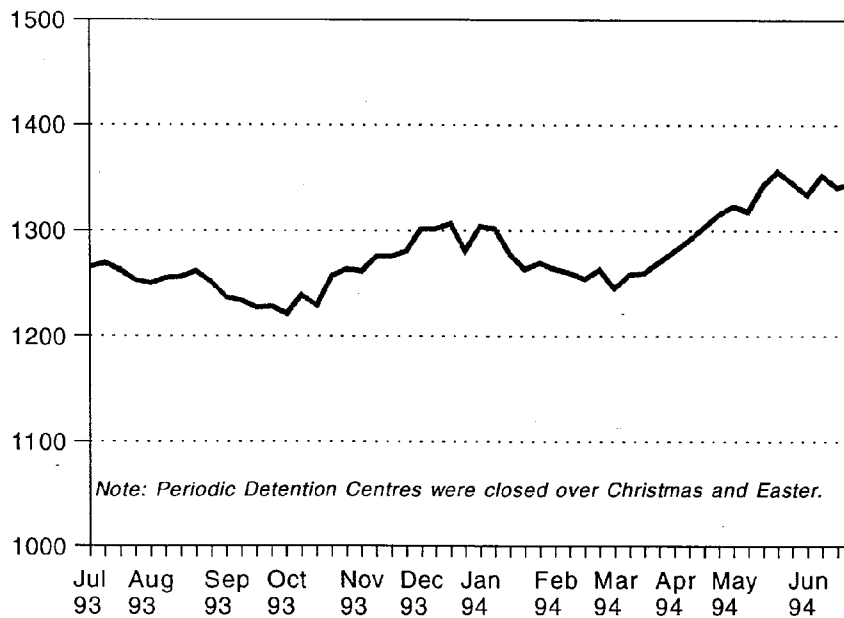
Date	Full-time Custody	Periodic Detainees	Total Inmates & Detainees	Date	Full-time Custody	Periodic Detainees	Total Inmates & Detainees
4 July 1993	6399	1266	7665	2 January 1994	6324	1304	7628
11 July 1993	6423	1270	7693	9 January 1994	6339	1302	7641
18 July 1993	6438	1263	7701	16 January 1994	6314	1278	7592
25 July 1993	6433	1254	7687	23 January 1994	6304	1264	7568
1 August 1993	6441	1251	7692	30 January 1994	6255	1270	7525
8 August 1993	6405	1256	7661	6 February 1994	6278	1264	7542
15 August 1993	6435	1257	7692	13 February 1994	6322	1261	7583
22 August 1993	6395	1262	7657	20 February 1994	6344	1255	7599
29 August 1993	6408	1252	7660	27 February 1994	6393	1264	7657
5 September 1993	6431	1237	7668	6 March 1994	6416	1246	7662
12 September 1993	6448	1234	7682	13 March 1994	6419	1259	7678
19 September 1993	6463	1227	7690	20 March 1994	6401	1261	7662
26 September 1993	6460	1228	7688	27 March 1994	6407	1271	7678
3 October 1993	6475	1221	7696	3 April 1994	6488	0	6488
10 October 1993	6462	1239	7701	10 April 1994	6409	1291	7700
17 October 1993	6515	1229	7744	17 April 1994	6367	1303	7670
24 October 1993	6526	1258	7784	24 April 1994	6409	1315	7724
31 October 1993	6495	1264	7759	1 May 1994	6397	1323	7720
7 November 1993	6507	1262	7769	8 May 1994	6425	1318	7743
14 November 1993	6508	1276	7784	15 May 1994	6400	1342	7742
21 November 1993	6487	1276	7763	22 May 1994	6416	1356	7772
28 November 1993	6441	1281	7722	29 May 1994	6438	1345	7783
5 December 1993	6407	1302	7709	5 June 1994	6462	1334	7796
12 December 1993	6365	1302	7667	12 June 1994	6442	1352	7794
19 December 1993	6357	1307	7664	19 June 1994	6387	1341	7728
26 December 1993	6284	1281	7565	26 June 1994	6409	1344	7753

Inmates in Full-time Custody



Graph prepared by: Research & Statistics, NSW Department of Corrective Services.

People with Periodic Detention Orders



Graph prepared by: Research & Statistics, NSW Department of Corrective Services.

Weekly States July 1993 - June 1994
Status of Inmates in Full-time Custody

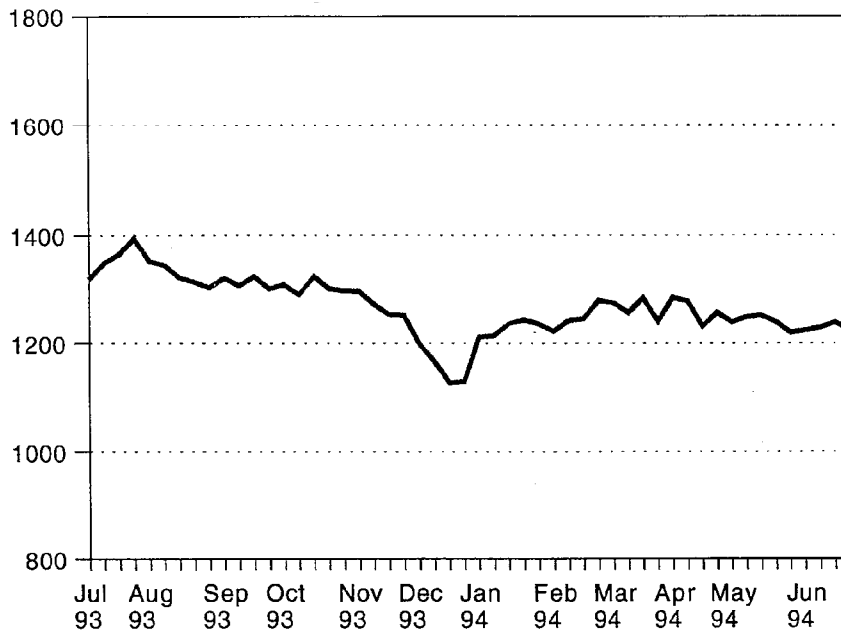
Date	Unsentenced* Inmates			Sentenced# Inmates			Total Inmates
	Male	Female	Total Unsentenced Inmates	Male	Female	Total Sentenced Inmates	
4 July 1993	1318	88	1406	4775	218	4993	6399
11 July 1993	1348	86	1434	4765	224	4989	6423
18 July 1993	1364	97	1461	4757	220	4977	6438
25 July 1993	1395	96	1491	4724	218	4942	6433
1 August 1993	1351	89	1440	4781	220	5001	6441
8 August 1993	1344	93	1437	4748	220	4968	6405
15 August 1993	1321	87	1408	4794	233	5027	6435
22 August 1993	1313	85	1398	4769	228	4997	6395
29 August 1993	1303	92	1395	4790	223	5013	6408
5 September 1993	1320	93	1413	4801	217	5018	6431
12 September 1993	1306	100	1406	4823	219	5042	6448
19 September 1993	1322	99	1421	4816	226	5042	6463
26 September 1993	1301	101	1402	4846	212	5058	6460
3 October 1993	1308	100	1408	4854	213	5067	6475
10 October 1993	1289	94	1383	4879	200	5079	6462
17 October 1993	1323	107	1430	4886	199	5085	6515
24 October 1993	1301	116	1417	4910	199	5109	6526
31 October 1993	1297	107	1404	4887	204	5091	6495
7 November 1993	1296	102	1398	4900	209	5109	6507
14 November 1993	1271	108	1379	4925	204	5129	6508
21 November 1993	1252	104	1356	4928	203	5131	6487
28 November 1993	1251	94	1345	4887	209	5096	6441
5 December 1993	1199	97	1296	4909	202	5111	6407
12 December 1993	1167	87	1254	4907	204	5111	6365
19 December 1993	1126	78	1204	4943	210	5153	6357
26 December 1993	1128	76	1204	4874	206	5080	6284

*"Unsentenced" includes remands, trials, appellants and deportees

#"Sentenced" includes sentenced to term imprisonment, life sentence, forensic patient and fine defaulters

Number of Unsentenced Males in Full-time Custody

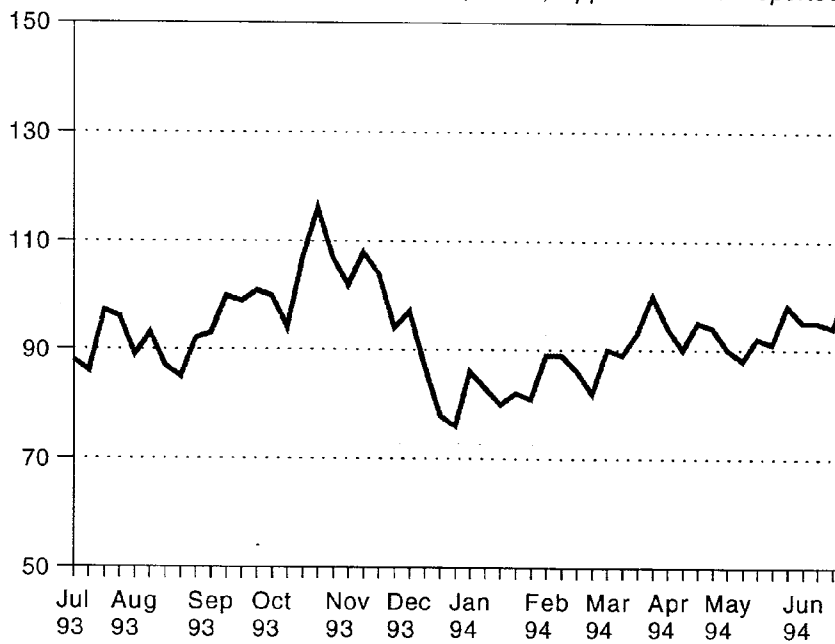
("Unsentenced" includes: Remands, Trials, Appellants and Deportees.)



Graph prepared by: Research & Statistics, NSW Department of Corrective Services.

Number of Unsentenced Females in Full-time Custody

("Unsentenced" includes: Remands, Trials, Appellants and Deportees.)



Graph prepared by: Research & Statistics, NSW Department of Corrective Services.

Weekly States July 1993 - June 1994
Status of Inmates in Full-time Custody

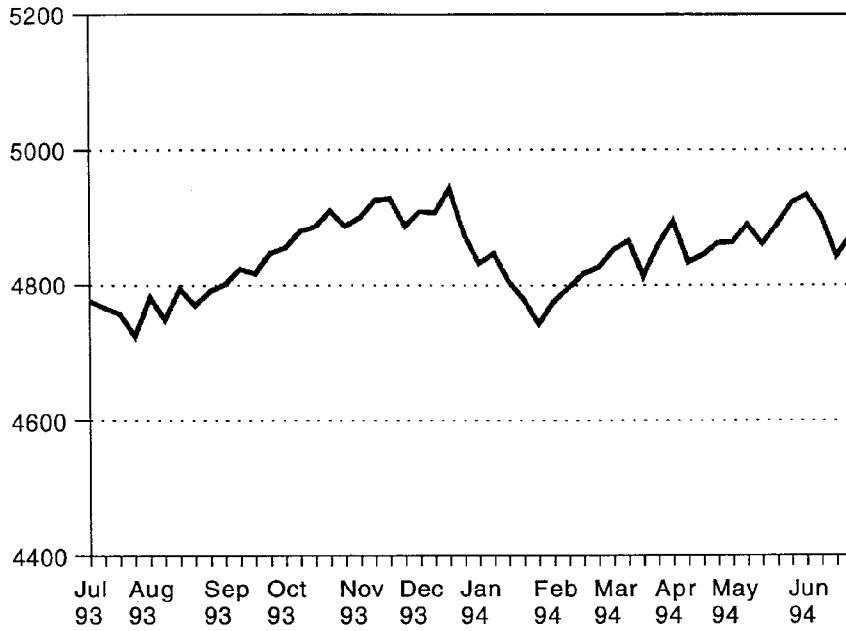
Date	Unsentenced* Inmates			Sentenced [†] Inmates			Total Inmates
	Male	Female	Total Unsentenced Inmates	Male	Female	Total Sentenced Inmates	
2 January 1994	1212	86	1298	4831	195	5026	6324
9 January 1994	1214	83	1297	4845	196	5041	6338
16 January 1994	1236	80	1316	4805	193	4998	6314
23 January 1994	1243	82	1325	4778	201	4979	6304
30 January 1994	1235	81	1316	4742	197	4939	6255
6 February 1994	1222	89	1311	4775	192	4967	6278
13 February 1994	1242	89	1331	4795	196	4991	6322
20 February 1994	1245	86	1331	4816	197	5013	6344
27 February 1994	1278	82	1360	4826	207	5033	6393
6 March 1994	1274	90	1364	4851	201	5052	6416
13 March 1994	1256	89	1345	4865	209	5074	6419
20 March 1994	1283	93	1376	4813	210	5025	6399
27 March 1994	1240	100	1340	4859	208	5067	6407
3 April 1994	1283	94	1377	4894	217	5111	6488
10 April 1994	1277	90	1367	4833	209	5042	6409
17 April 1994	1231	95	1326	4844	197	5041	6367
24 April 1994	1256	94	1350	4861	198	5059	6409
1 May 1994	1239	90	1329	4863	205	5086	6397
8 May 1994	1248	88	1336	4889	200	5089	6425
15 May 1994	1251	92	1343	4860	197	5057	6400
22 May 1994	1239	91	1330	4889	197	5086	6416
29 May 1994	1220	98	1318	4922	198	5120	6438
5 June 1994	1224	95	1319	4933	210	5143	6462
12 June 1994	1229	95	1324	4901	217	5118	6442
19 June 1994	1238	94	1332	4842	213	5055	6387
26 June 1994	1226	102	1328	4872	209	5081	6409

*Unsentenced" includes remands, trials, appellants and deportees

†Sentenced" includes sentenced to term imprisonment, life sentence, forensic patient and fine defaulters

Number of Sentenced Males in Full-time Custody

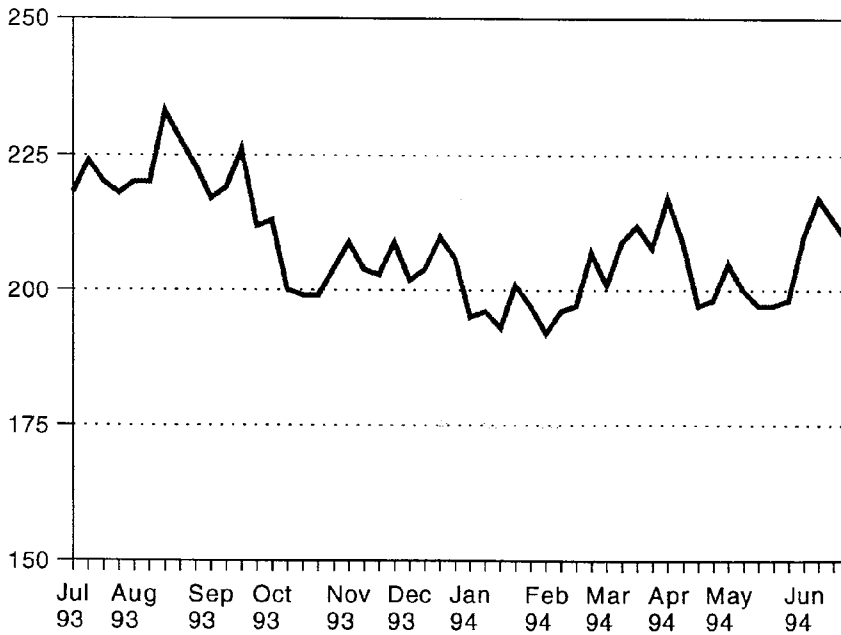
"Sentenced" includes: Fine Defaulters, Lifers and Forensic Patients.



Graph prepared by: Research & Statistics, NSW Department of Corrective Services.

Number of Sentenced Females in Full-time Custody

"Sentenced" includes: Fine Defaulters, Lifers and Forensic Patients.

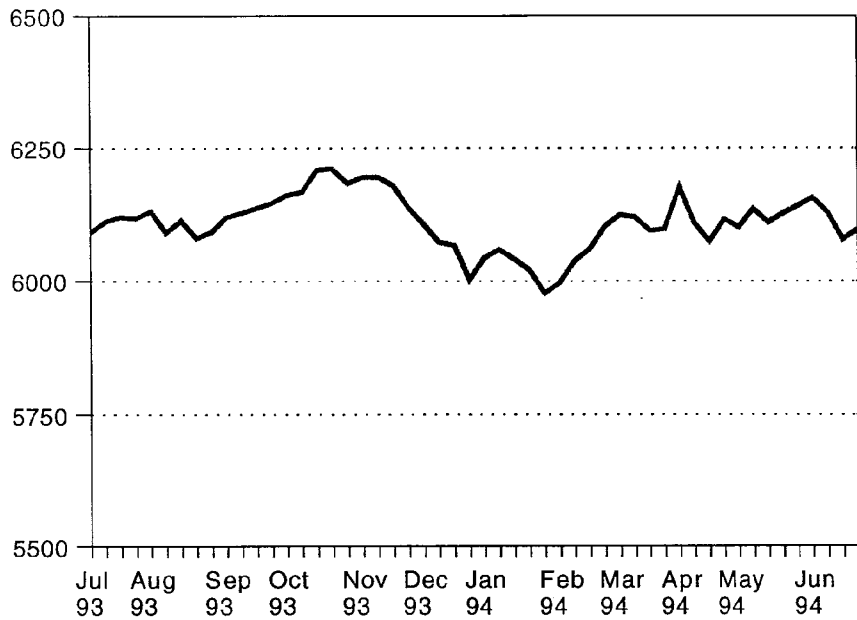


Graph prepared by: Research & Statistics, NSW Department of Corrective Services.

Weekly States July 1993 - June 1994
Sex of Inmates in Full-time Custody

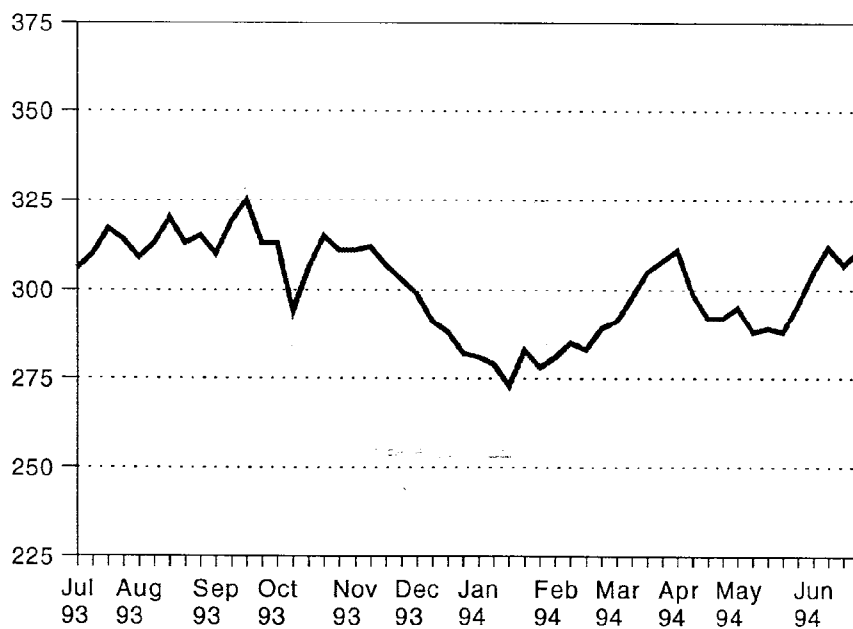
Date	Males Inmates	Females Inmates	Total Inmates	Date	Males Inmates	Females Inmates	Total Inmates
4 July 1993	6093	306	6399	2 January 1994	6043	281	6324
11 July 1993	6113	310	6423	9 January 1994	6059	279	6338
18 July 1993	6121	317	6438	16 January 1994	6041	273	6314
25 July 1993	6119	314	6433	23 January 1994	6021	283	6304
1 August 1993	6132	309	6441	30 January 1994	5977	278	6255
8 August 1993	6092	313	6405	6 February 1994	5997	281	6278
15 August 1993	6115	320	6435	13 February 1994	6037	285	6322
22 August 1993	6082	313	6395	20 February 1994	6061	283	6344
29 August 1993	6093	315	6408	27 February 1994	6104	289	6393
5 September 1993	6121	310	6431	6 March 1994	6125	291	6466
12 September 1993	6129	319	6448	13 March 1994	6121	298	6419
19 September 1993	6138	325	6463	20 March 1994	6096	303	6399
26 September 1993	6147	313	6460	27 March 1994	6099	308	6407
3 October 1993	6162	313	6475	3 April 1994	6177	311	6488
10 October 1993	6168	294	6462	10 April 1994	6110	299	6409
17 October 1993	6209	306	6515	17 April 1994	6075	292	6367
24 October 1993	6211	315	6526	24 April 1994	6117	292	6409
31 October 1993	6184	311	6495	1 May 1994	6102	295	6397
7 November 1993	6196	311	6507	8 May 1994	6137	288	6425
14 November 1993	6196	312	6508	15 May 1994	6111	289	6400
21 November 1993	6180	307	6487	22 May 1994	6128	288	6416
28 November 1993	6138	303	6441	29 May 1994	6142	296	6438
5 December 1993	6108	299	6407	5 June 1994	6157	305	6462
12 December 1993	6074	291	6365	12 June 1994	6130	312	6442
19 December 1993	6069	288	6367	19 June 1994	6080	307	6387
26 December 1993	6002	282	6284	26 June 1994	6098	311	6409

Number of Males in Full-time Custody



Graph prepared by: Research & Statistics, NSW Department of Corrective Services.

Number of Females in Full-time Custody



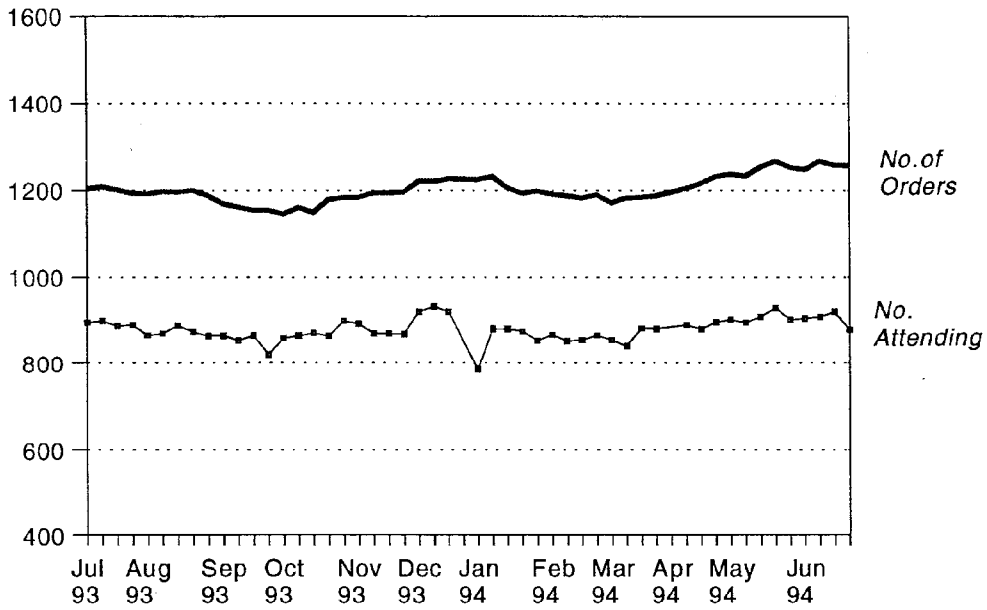
Graph prepared by: Research & Statistics, NSW Department of Corrective Services.

Weekly States July 1993 - June 1994
Periodic Detainees

Date	No. Of Orders		No. Attending		Date	No. Of Orders		No. Attending	
	M	F	M	F		M	F	M	F
4 July 1993	1204	62	895	45	2 January 1994	1225	79	785	42
11 July 1993	1208	62	899	44	9 January 1994	1231	71	881	51
18 July 1993	1202	61	887	48	16 January 1994	1207	71	881	54
25 July 1993	1194	60	890	46	23 January 1994	1194	70	875	46
1 August 1993	1193	58	866	40	30 January 1994	1199	71	854	48
8 August 1993	1198	58	870	44	6 February 1994	1191	73	867	51
15 August 1993	1197	60	888	46	13 February 1994	1188	73	852	51
22 August 1993	1201	61	874	48	20 February 1994	1183	72	855	47
29 August 1993	1189	63	864	45	27 February 1994	1190	74	866	49
5 September 1993	1170	67	865	50	6 March 1994	1172	74	855	47
12 September 1993	1162	72	854	52	13 March 1994	1183	76	841	49
19 September 1993	1155	72	865	56	20 March 1994	1185	76	882	49
26 September 1993	1155	73	852	54	27 March 1994	1188	82	881	58
3 October 1993	1146	75	821	56	3 April 1994	*	*	*	*
10 October 1993	1161	78	859	59	10 April 1994	1205	86	890	67
17 October 1993	1150	79	865	61	17 April 1994	1216	88	880	58
24 October 1993	1179	79	871	60	24 April 1994	1232	83	897	61
31 October 1993	1185	79	864	54	1 May 1994	1237	86	902	62
7 November 1993	1185	77	899	55	8 May 1994	1232	86	895	52
14 November 1993	1194	82	892	62	15 May 1994	1253	89	908	65
21 November 1993	1194	82	870	60	22 May 1994	1266	90	929	69
28 November 1993	1197	84	868	57	29 May 1994	1253	92	902	63
5 December 1993	1220	82	920	64	5 June 1994	1247	87	905	64
12 December 1993	1220	82	932	60	12 June 1994	1266	86	908	63
19 December 1993	1226	81	920	57	19 June 1994	1257	84	920	60
26 December 1993	1203	78	*	*	26 June 1994	1256	88	879	63

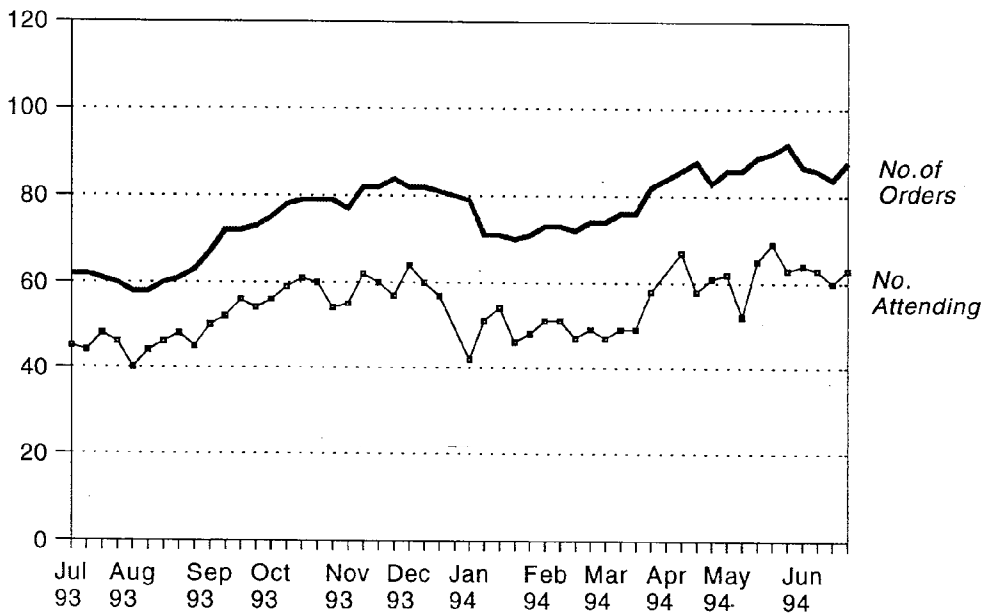
* Periodic Detention Centres closed over Christmas and Easter.

Male Periodic Detainees



Note: Periodic Detention Centres were closed over Christmas and Easter.
 Graph prepared by: Research & Statistics, NSW Department of Corrective Services.

Female Periodic Detainees



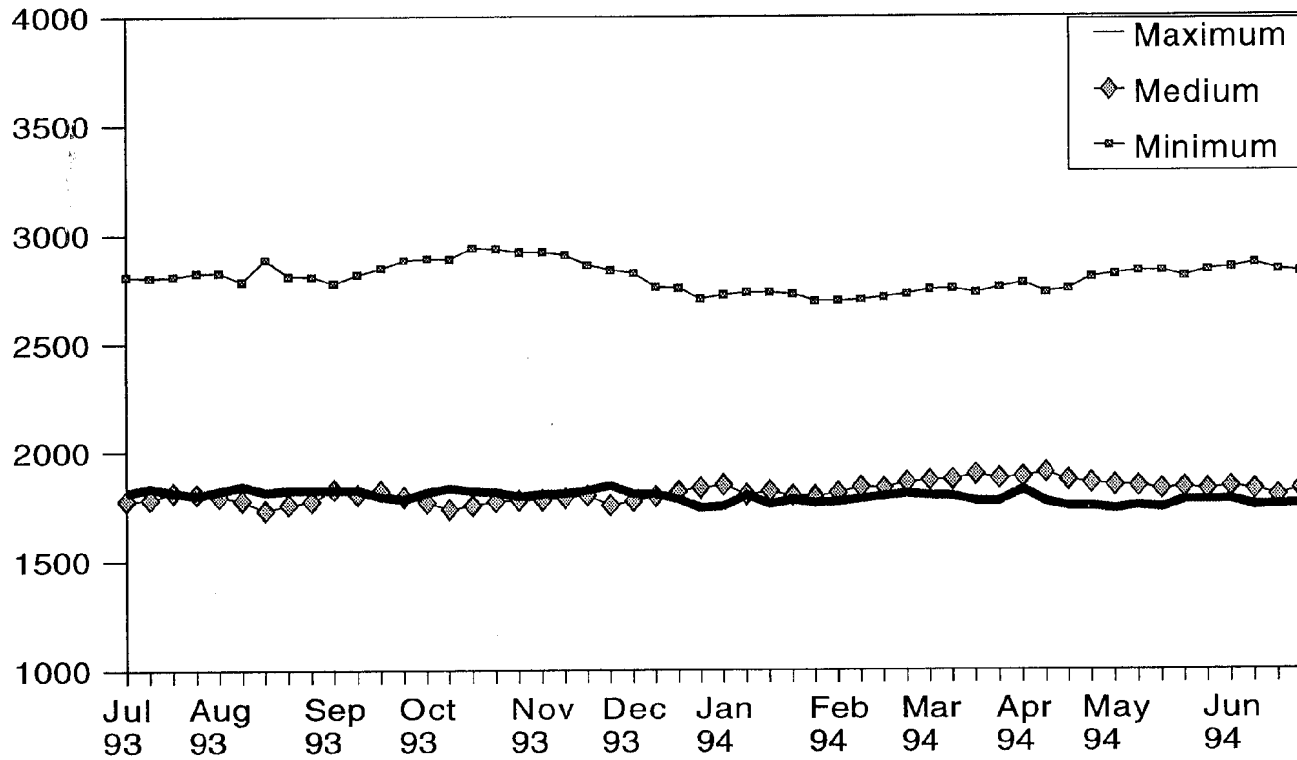
Note: Periodic Detention Centres were closed over Christmas and Easter.
 Graph prepared by: Research & Statistics, NSW Department of Corrective Services.

Weekly States July 1993 - June 1994
Classification of Institution in Which Inmates are Held

Date	Security			Total	Date	Security			Total
	Max	Med	Min			Max	Med	Min	
4 July 1993	1813	1776	2810	6399	2 January 1994	1750	1849	2725	6324
11 July 1993	1835	1782	2806	6423	9 January 1994	1800	1803	2736	6339
18 July 1993	1814	1813	2811	6438	16 January 1994	1759	1918	2736	6314
25 July 1993	1800	1806	2827	6433	23 January 1994	1779	1798	2727	6304
1 August 1993	1819	1794	2828	6441	30 January 1994	1765	1795	2695	6255
8 August 1993	1843	1776	2786	6405	6 February 1994	1770	1811	2697	6278
15 August 1993	1815	1732	2888	6435	13 February 1994	1782	1838	2702	6325
22 August 1993	1824	1759	2812	6395	20 February 1994	1796	1834	2714	6344
29 August 1993	1826	1773	2809	6408	27 February 1994	1806	1859	2728	6393
5 September 1993	1824	1828	2779	6431	6 March 1994	1798	1869	2749	6416
12 September 1993	1825	1804	2819	6448	13 March 1994	1796	1871	2752	6419
19 September 1993	1793	1822	2848	6463	20 March 1994	1772	1895	2734	6401
26 September 1993	1782	1793	2885	6460	27 March 1994	1772	1877	2758	6407
3 October 1993	1814	1768	2893	6475	3 April 1994	1825	1885	2778	6488
10 October 1993	1834	1737	2891	6462	10 April 1994	1770	1904	2735	6409
17 October 1993	1820	1755	2940	6515	17 April 1994	1748	1869	2750	6367
24 October 1993	1816	1773	2937	6526	24 April 1994	1748	1857	2804	6409
31 October 1993	1796	1778	2921	6495	1 May 1994	1735	1845	2817	6397
7 November 1993	1806	1779	2922	6507	8 May 1994	1751	1842	2832	6425
14 November 1993	1810	1789	2909	6508	15 May 1994	1740	1828	2832	6400
21 November 1993	1824	1801	2862	6487	22 May 1994	1774	1835	2807	6416
28 November 1993	1846	1756	2839	6441	29 May 1994	1775	1827	2836	6438
5 December 1993	1807	1775	2825	6407	5 June 1994	1778	1837	2847	6462
12 December 1993	1807	1797	2761	6365	12 June 1994	1750	1826	2866	6442
19 December 1993	1782	1819	2756	6357	19 June 1994	1755	1797	2835	6387
26 December 1993	1743	1834	2707	6284	26 June 1994	1757	1826	2826	6409

NOTE: Security Classification for Cessnock, John Morony and Tamworth Correctional Centres were changed on 4th July 1993.

Institutional Security Inmates in Full-time Custody

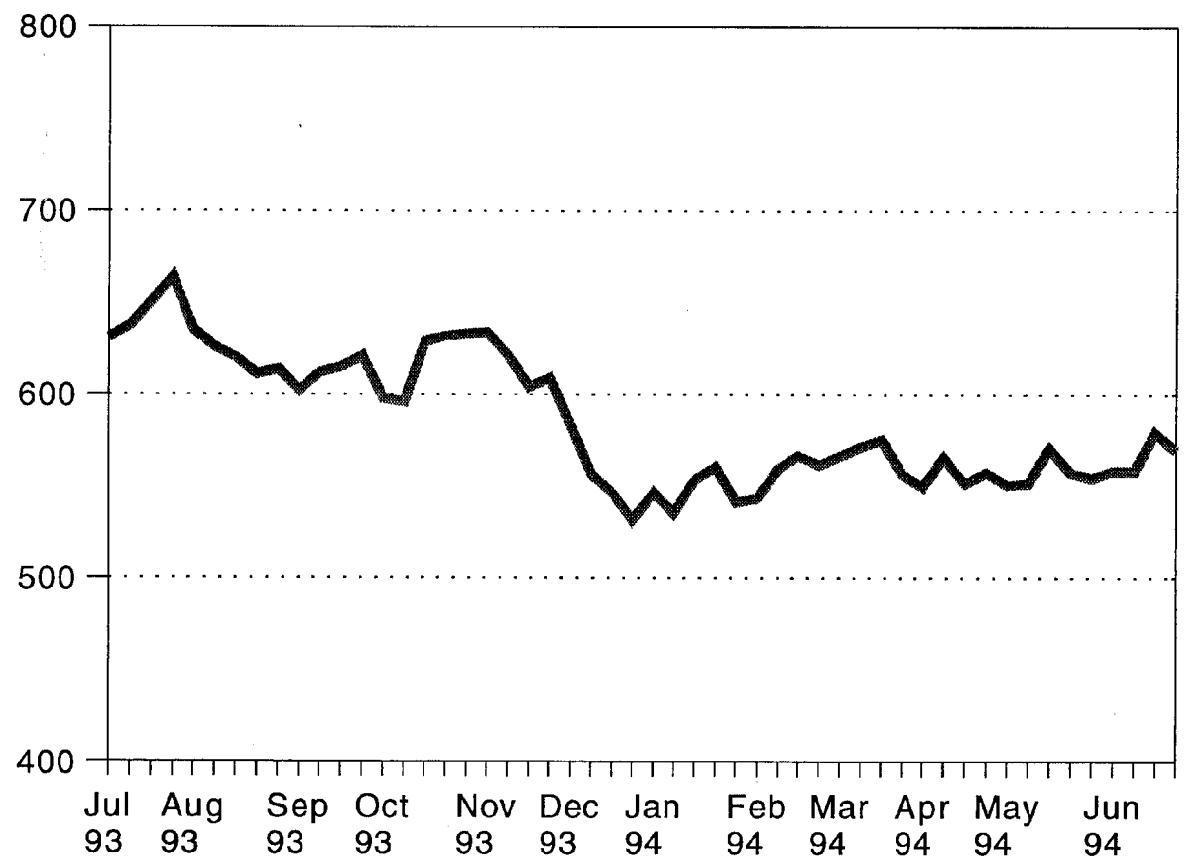


Graph prepared by: Research & Statistics, NSW Department of Corrective Services.

Weekly States July 1993 - June 1994
Number of Appellants in Full-time Custody

Date	Males Appellants	Females Appellants	Total Appellants	Date	Male Appellants	Females Appellants	Total Appellants
4 July 1993	576	55	631	2 January 1994	502	44	546
11 July 1993	585	53	638	9 January 1994	493	42	535
18 July 1993	592	59	651	16 January 1994	510	43	553
25 July 1993	608	56	664	23 January 1994	515	45	560
1 August 1993	582	53	635	30 January 1994	496	45	541
8 August 1993	574	52	626	6 February 1994	497	46	543
15 August 1993	571	49	620	13 February 1994	511	48	559
22 August 1993	561	50	611	20 February 1994	519	47	566
29 August 1993	560	54	614	27 February 1994	521	40	561
5 September 1993	556	46	602	6 March 1994	518	48	566
12 September 1993	558	54	612	13 March 1994	521	50	571
19 September 1993	565	50	615	20 March 1994	522	53	575
26 September 1993	567	54	621	27 March 1994	504	52	556
3 October 1993	543	55	598	3 April 1994	500	49	549
10 October 1993	540	56	596	10 April 1994	515	50	565
17 October 1993	572	57	629	17 April 1994	499	52	551
24 October 1993	572	60	632	24 April 1994	505	52	557
31 October 1993	577	56	633	1 May 1994	503	47	550
7 November 1993	579	55	634	8 May 1994	503	48	551
14 November 1993	561	60	621	15 May 1994	521	49	570
21 November 1993	548	56	604	22 May 1994	508	49	557
28 November 1993	557	52	609	29 May 1994	505	49	554
5 December 1993	531	52	583	5 June 1994	509	49	558
12 December 1993	510	46	556	12 June 1994	508	50	558
19 December 1993	504	42	546	19 June 1994	526	53	579
26 December 1993	496	35	531	26 June 1994	512	57	569

Number of Appellants in Full-time Custody

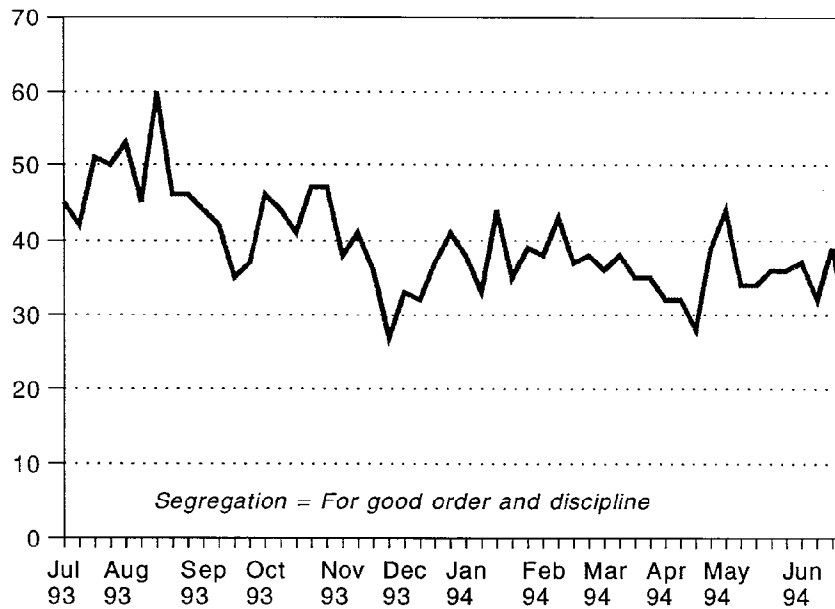


Graph prepared by: Research & Statistics, NSW Department of Corrective services.

Weekly States July 1993 - June 1994
Segregation and Protection

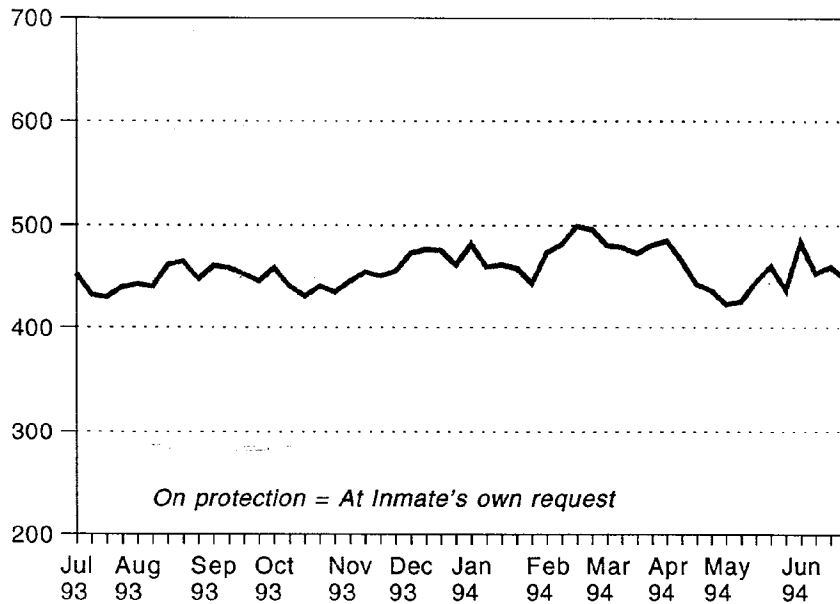
Date	Segregation			Protection			Date	Segregation			Protection		
	M	F	Total	M	F	Total		M	F	Total	M	F	Total
4 July 1993	42	3	45	447	6	453	2 January 1994	35	3	38	479	3	482
11 July 1993	41	1	42	425	7	432	9 January 1994	28	5	33	457	3	460
18 July 1993	50	1	51	424	6	430	16 January 1993	39	5	44	459	3	462
25 July 1993	48	2	50	434	6	440	23 January 1993	32	3	35	454	5	459
1 August 1993	51	2	53	437	6	443	30 January 1994	35	4	39	438	6	444
8 August 1993	44	1	45	432	9	441	6 February 1994	34	4	38	463	11	474
15 August 1993	59	1	60	452	10	462	13 February 1994	39	4	41	471	11	482
22 August 1993	42	4	46	454	11	465	20 February 1994	32	5	37	488	11	499
29 August 1993	42	4	46	440	8	448	27 February 1994	33	5	38	484	12	496
5 September 1993	42	2	44	453	8	461	6 March 1994	32	4	36	470	11	481
12 September 1993	41	1	42	451	8	459	13 March 1994	35	3	38	467	12	479
19 September 1993	33	2	35	444	9	453	20 March 1994	33	2	35	463	10	473
26 September 1993	36	1	37	437	9	446	27 March 1994	33	2	35	472	9	481
3 October 1993	43	3	46	451	8	459	3 April 1994	29	3	32	476	9	485
10 October 1993	41	3	44	433	8	441	10 April 1994	28	4	32	458	8	466
17 October 1993	38	3	41	423	8	431	17 April 1994	24	4	28	436	7	443
24 October 1993	44	3	47	435	6	441	24 April 1994	35	4	39	430	7	437
31 October 1993	46	1	47	430	5	435	1 May 1994	40	4	44	417	6	423
7 November 1993	34	4	38	442	4	446	8 May 1994	34	0	34	421	5	426
14 November 1993	37	4	41	448	7	455	15 May 1994	33	1	34	439	7	446
21 November 1993	34	2	36	444	7	451	22 May 1994	35	1	36	453	8	461
28 November 1993	25	2	27	450	6	456	29 May 1994	35	1	36	428	9	437
5 December 1993	31	2	33	467	6	473	5 June 1994	35	2	37	476	8	484
12 December 1993	30	2	32	472	5	477	12 June 1994	30	2	32	445	9	454
19 December 1993	34	3	37	472	4	476	19 June 1994	37	2	39	451	9	460
26 December 1993	36	5	41	459	3	462	26 June 1994	28	1	29	440	9	449

Number of Inmates on Segregation



Graph prepared by: Research & Statistics, NSW Department of Corrective Services.

Number of Inmates on Protection

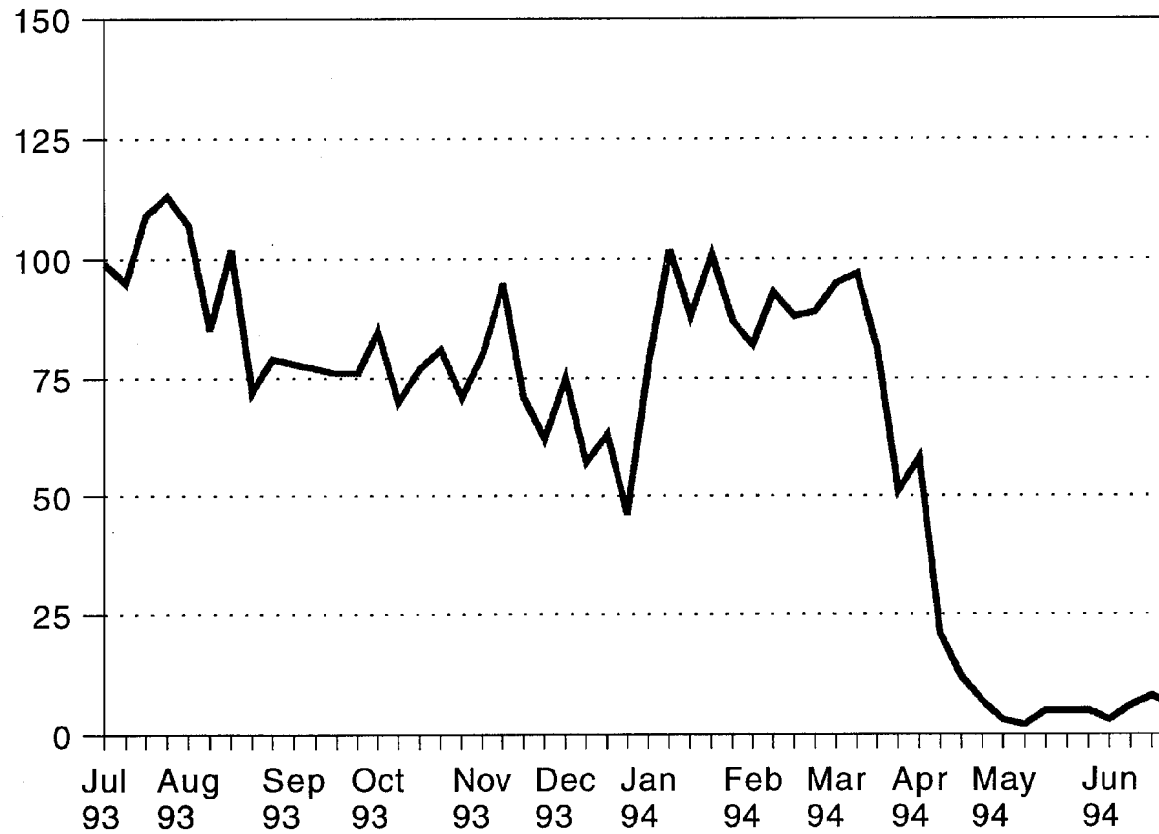


Graph prepared by: Research & Statistics, NSW Department of Corrective Services.

Weekly States July 1993 - June 1994
Number of Fine Defaulters in Full-time Custody

Date	Male Fine Defaulters	Female Fine Defaulters	Total Fine Defaulters	Date	Male Fine Defaulters	Female Fine Defaulters	Total Fine Defaulters
4 July 1993	90	9	99	2 January 1994	67	11	78
11 July 1993	83	12	95	9 January 1994	92	10	102
18 July 1993	96	13	109	16 January 1994	79	9	88
25 July 1993	100	13	113	23 January 1994	84	17	101
1 August 1993	96	11	107	30 January 1994	73	14	87
8 August 1993	75	10	85	6 February 1994	70	12	82
15 August 1993	84	18	102	13 February 1994	78	15	93
2 August 1993	56	16	72	20 February 1994	79	9	88
29 August 1993	62	17	79	27 February 1994	76	13	89
5 September 1993	66	12	78	6 March 1994	82	13	95
12 September 1993	69	8	77	13 March 1994	82	15	97
19 September 1993	64	12	76	20 March 1994	65	16	81
26 September 1993	68	8	76	27 March 1994	40	11	51
3 October 1993	69	16	85	3 April 1994	51	7	58
10 October 1993	63	7	70	10 April 1993	17	4	21
17 October 1993	68	9	77	17 April 1994	11	1	12
24 October 1993	68	13	81	24 April 1994	4	3	7
31 October 1993	60	11	71	1 May 1994	1	2	3
7 November 1993	67	13	80	8 May 1994	2	0	2
14 November 1993	80	15	95	15 May 1994	5	0	5
21 November 1993	62	9	71	22 May 1994	5	0	5
28 November 1993	52	10	62	29 May 1994	5	0	5
5 December 1993	67	8	75	5 June 1994	2	1	3
12 December 1993	47	10	57	12 June 1994	3	3	6
19 December 1993	51	12	63	19 June 1994	6	2	8
26 December 1993	38	8	46	26 June 1994	4	2	6

Number of Fine Defaulters



Graph prepared by: Research & Statistics, NSW Department of Corrective Services.

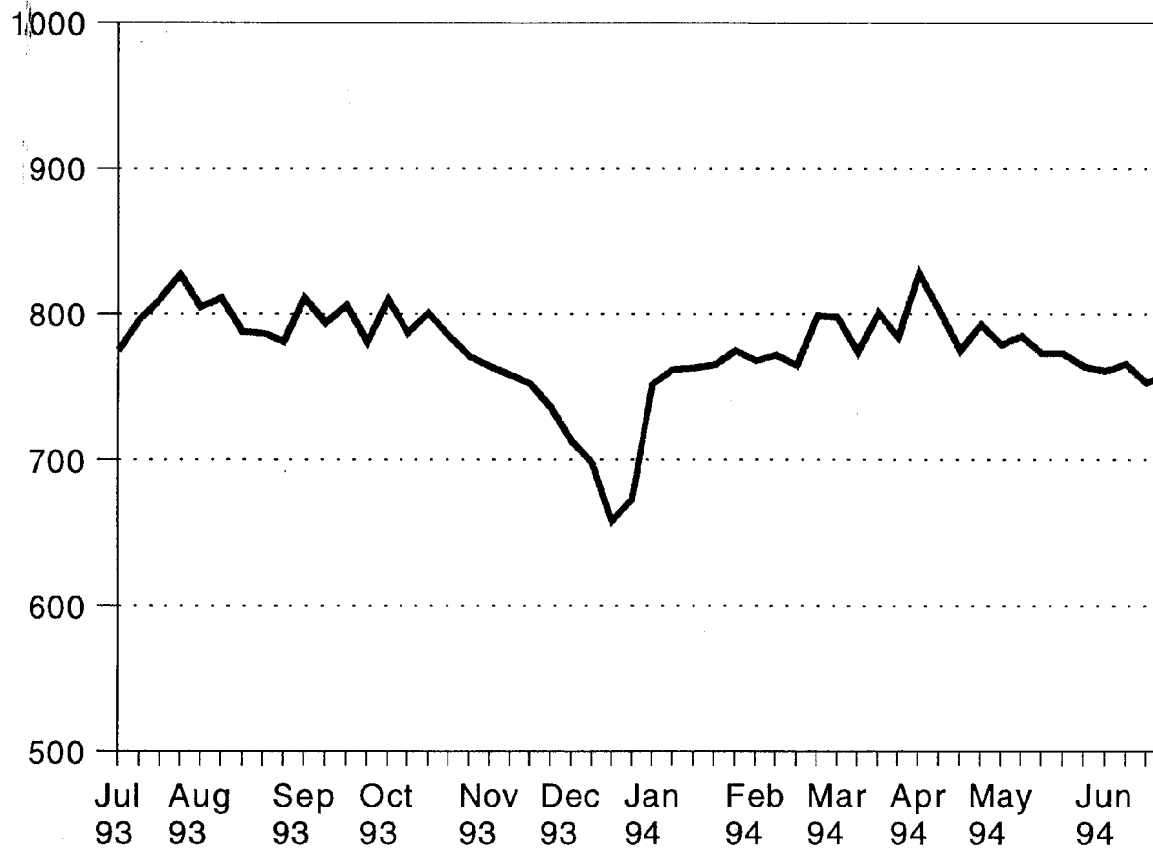
Note: A Moratorium was placed on the execution of fine default orders from 31st March to 30th June 1994.

Weekly States July 1993 - June 1994

Number of Unsented Inmates less Appellants

Date	Unsented	Appellants	Unsented less Appellants	Date	Unsented	Appellants	Unsented less appellants
4 July 1993	1406	631	775	2 January 1994	1298	546	752
11 July 1993	1434	638	796	9 January 1994	1297	535	762
18 July 1993	1461	651	810	16 January 1994	1316	553	763
25 July 1993	1491	664	827	23 January 1994	1325	560	765
1 August 1993	1440	635	805	30 January 1994	1316	541	775
8 August 1993	1437	626	811	6 February 1994	1311	543	768
15 August 1993	1408	620	788	13 February 1994	1331	559	772
22 August 1993	1398	611	787	20 February 1994	1331	566	765
29 August 1993	1395	614	781	27 February 1994	1360	561	799
5 September 1993	1413	602	811	6 March 1994	1364	566	798
12 September 1993	1406	612	794	13 March 1994	1345	571	774
19 September 1993	1421	615	806	20 March 1994	1376	575	801
26 September 1993	1402	621	781	27 March 1994	1340	556	784
3 October 1993	1408	598	810	3 April 1994	1377	549	828
10 October 1993	1383	596	787	10 April 1994	1367	565	802
17 October 1993	1430	629	801	17 April 1994	1326	551	775
24 October 1993	1417	632	785	24 April 1994	1350	557	793
31 October 1993	1404	633	771	1 May 1994	1329	550	779
7 November 1993	1398	634	764	8 May 1994	1336	551	785
14 November 1993	1379	621	758	15 May 1994	1343	570	773
21 November 1993	1356	604	752	22 May 1994	1330	557	773
28 November 1993	1345	609	736	29 May 1994	1318	554	764
5 December 1993	1296	583	713	5 June 1994	1319	558	761
12 December 1993	1254	556	698	12 June 1994	1324	558	766
19 December 1993	1204	546	658	19 June 1994	1332	579	753
26 December 1993	1204	531	673	26 June 1994	1328	569	759

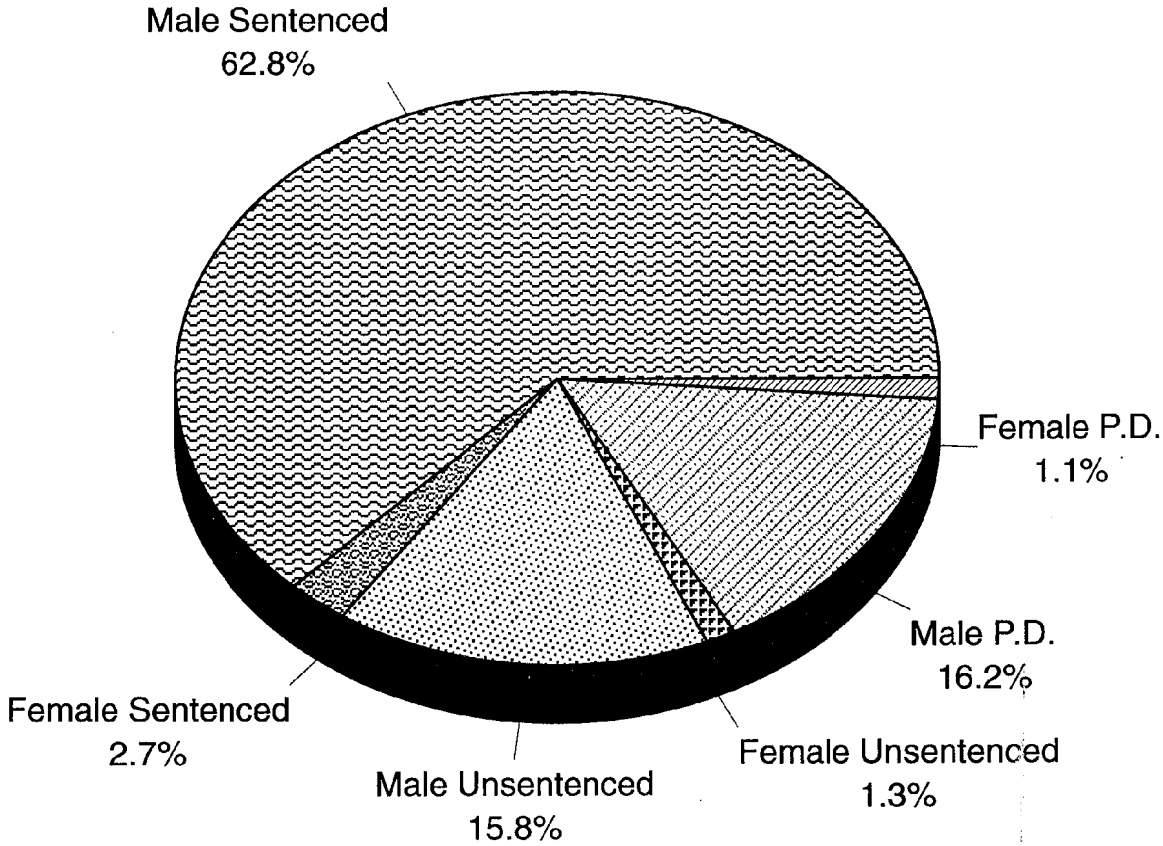
Remand, Trial and Deportee Inmates



Graph prepared by: Research & Statistics, NSW Department of Corrective Services.

Profile on last Sunday of June 1994

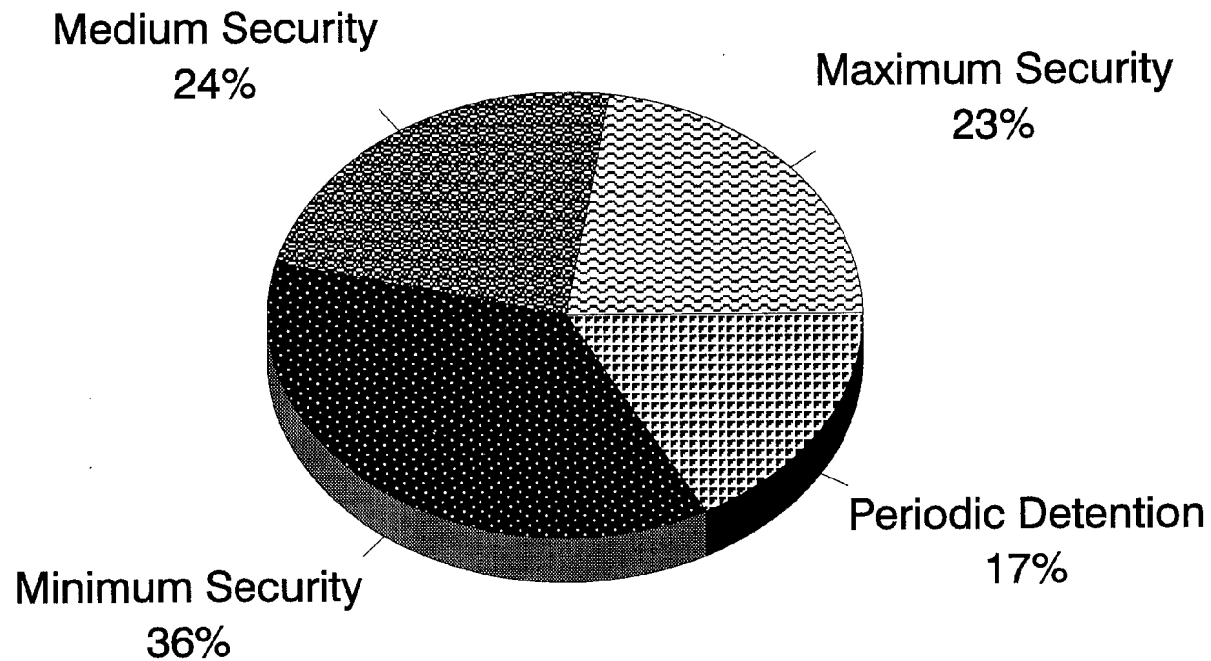
30



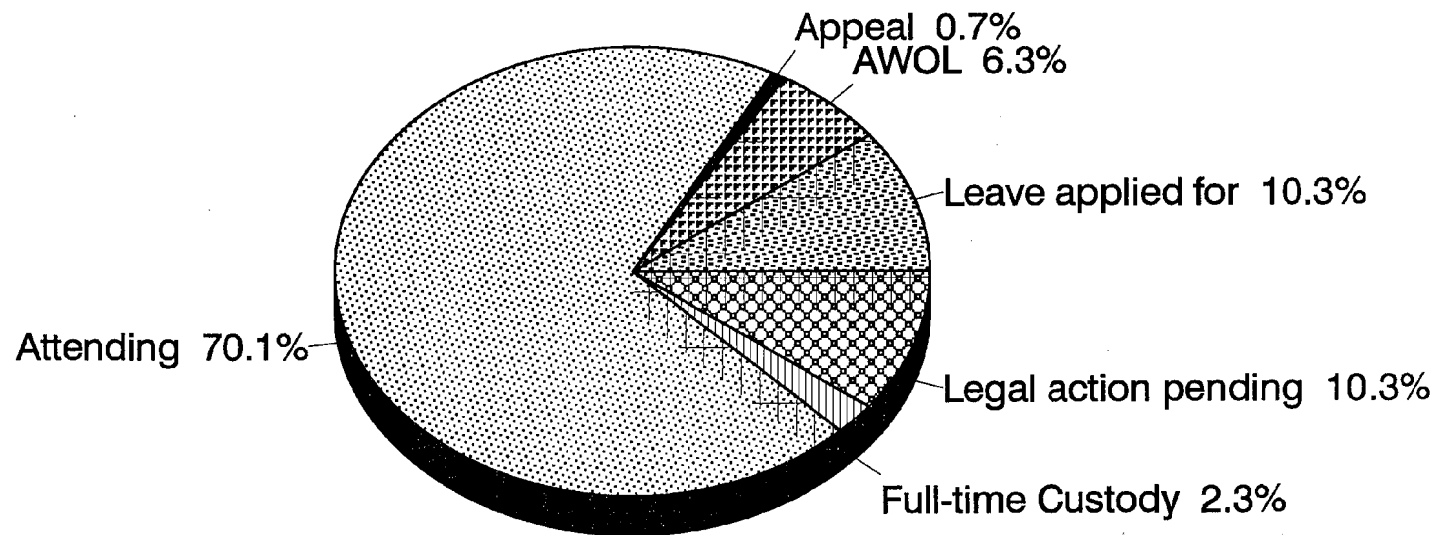
P.D. = Periodic Detention
Research & Statistics, NSW Department of Corrective Services

Institutional Security

Percentage on last Sunday of June 1994



Periodic Detainees Attendance and Reasons for Non-attendance on last Sunday of June 1994



WEEKLY STATES AT MIDNIGHT ON: 4TH JULY, 1993

FULL-TIME INMATES		INMATES				*Accommodation in				Beds +/- **	Segreg-Protec ation ion			
		Males		Females		Total	Single Cells	Multi Cells	Dorm		Total Beds	M	F	M
		U/S	S	U/S	S									
	Goulburn (Main)	78	379	-	-	457	314	55	-	369	-88	14	-	277
	Maitland	50	86	-	-	136	51	76	-	127	-9	-	-	19
	Long Bay Complex													
	- Special Purpose Centre	17	28	1	3	49	60	-	-	60	11	-	-	-
M	- L. B. Hospital - Med.	5	23	-	-	28	16	12	-	28	0	-	-	-
A	- L. B. Hospital - Psych.	31	50	-	-	81	84	-	-	84	3	-	-	-
X	- Prince Henry Annexe	2	4	-	-	6	-	-	7	7	1	-	-	-
I	- Reception & Industrial	54	323	-	-	377	410	2	-	412	35	16	-	42
M	- Special Care C. C.													
U	- Special Care Unit	1	22	-	-	23	27	-	-	27	4	-	-	-
M	- Crisis Support Unit	4	2	-	2	8	-	18	-	18	10	-	-	-
	- Lifestyles Unit	-	4	-	1	5	-	8	-	8	3	-	-	-
	- Remand Centre	343	16	-	-	359	216	2	8	226	-133	2	-	56
	Lithgow	71	213	-	-	284	298	-	-	298	14	1	-	30
	John Morony	39	182	-	-	221	232	18	-	250	29	-	-	-
	Tamworth	13	38	-	-	51	-	66	-	66	15	5	-	4
	Sub-total	708	1370	1	6	2085	1708	257	15	1980	-105	38	0	428
	Bathurst (Main)	34	174	-	-	208	220	4	-	224	16	1	-	5
M	Broken Hill	10	32	-	1	43	14	14	-	28	-15	-	-	1
E	Cessnock	45	407	-	-	452	407	50	-	457	5	1	-	9
D	Cooma	13	147	-	-	160	112	-	8	120	-40	-	-	-
I	Grafton (Main)	20	38	2	1	61	42	-	12	54	-7	-	-	4
U	Mulawa	-	-	77	140	217	162	52	8	222	5	-	3	-
M	Parramatta	272	138	-	-	410	292	-	-	292	-118	-	-	-
	Parklea N.W.R.	41	205	-	-	260	313	-	-	313	53	-	-	-
	- Work Release	-	14	-	-	-	-	-	-	-	-	-	-	-
	Juncce (Medium)	53	313	-	-	366	368	16	-	384	18	2	-	-
	Sub-total	488	1468	79	142	2177	1930	136	28	2094	-83	4	3	19
	Berrima	7	54	-	-	61	57	4	-	61	0	-	-	-
	Emu Plains	10	127	-	-	137	116	2	-	118	-19	-	-	-
	Norma Parker N.W.R.	-	-	8	44	78	26	38	-	64	-14	-	-	-
	- Work Release	-	-	-	26	-	-	-	-	-	-	-	-	-
M	Silverwater N.W.R.	14	188	-	-	328	45	408	-	453	125	-	-	-
I	- Work Release	7	119	-	-	-	-	-	-	-	-	-	-	-
N	Goulburn (X-Wing)	8	97	-	-	105	90	-	-	90	-15	-	-	-
I	Bathurst (X-Wing)	13	69	-	-	82	89	-	-	89	7	-	-	-
M	Grafton (C-Unit)	6	103	-	-	109	96	-	-	96	-13	-	-	-
U	Training Centre (Long Bay)	10	273	-	-	283	211	-	-	211	-72	-	-	-
M	St Heliers	-	237	-	-	237	184	-	5	189	-48	-	-	-
	Glen Innes	-	139	-	-	139	154	-	-	154	15	-	-	-
	Mannus	5	141	-	-	146	81	48	12	141	-5	-	-	-
	Oberon	7	31	-	-	38	80	-	-	80	42	-	-	-
	Kirkconnell	13	166	-	-	179	70	60	-	130	-49	-	-	-
	Juncce (Minimum)	22	193	-	-	215	228	-	-	228	13	-	-	-
	Sub-total	122	1937	8	70	2137	1527	560	17	2104	-33	0	0	0
	TOTAL FULL-TIME	1318	4775	88	218	6399	5165	953	60	6178	-221	42	3	447

* Design accommodation in uncrowded conditions - amended 21st June, 1993.

N.W.R.=Non Work Release

**Difference between number of beds in uncrowded conditions and number of inmates.

S=Sentenced inmates (not including appellants) U/S=Unsentenced inmates (including appellants, trials, remandees and deportees)

Included in the above figures are:

Number of fine defaulters (in gaol for no other reason)	90 M +	9 F =	99	(including	0 at June
Number of inmates on appeal	576 M +	55 F =	631	(including	75 at June
Number of inmates on remand or for trial	740 M +	33 F =	773	(including	0 at June
Number of juveniles under 18 years	0 M +	0 F =	0	(including	0 at June
Total full-time inmates =	5818 (at DOCS institutions)	+	581 (at Juncce)	=	6399

WEEKLY STATES FOR THE WEEK ENDING: 4TH JULY, 1993

(P.D.'S)	People with warrants			Attending			No.* Beds	Beds* +/-
	Stage1	Stage2	Total	Stage1	Stage2	Total		
Campbelltown	76	41	117	50	36	86	52	2
Emu Plains	53	33	86	38	32	70	66	28
Grafton	44	16	60	38	16	54	50	12
Malabar	143	45	188	101	42	143	164	63
Malabar Mid-week	54	40	94	36	37	73	164	128
Parramatta	42	3	45	28	3	31	33	5
St Heliers	21	13	34	15	12	27	25	10
Silverwater	122	58	180	85	54	139	110	25
Silverwater Mid-week	51	28	79	32	26	58	110	78
Tomago	107	34	141	64	30	94	96	32
Windsor	130	44	174	80	40	120	60	-20
Administration**	6	0	6	0	0	0	0	0
Total Males	849	355	1204	567	328	895	930	363

Merinda	38	24	62	25	20	45	52	27
Administration**	0	0	0	0	0	0	0	0
Total Females	38	24	62	25	20	45	52	27

TOTAL P.D.'S	887	379	1266	592	348	940	982	390
---------------------	------------	------------	-------------	------------	------------	------------	------------	------------

* Number of free beds calculated on the numbers attending in Stage 1 and assuming uncrowded conditions.

Amended 28th June, 1992.

** Comprises detainees who have failed to attend for more than 8 consecutive weeks.

The total number of people with warrants comprises:

Number attending		895	45	940
Number in full-time custody	sentenced - one month or less	2 M +	1 F =	3
	sentenced - more than one month	7 M +	0 F =	7
	remand	8 M +	0 F =	8
Number on appeal with bail		17 M +	1 F =	18
Number absent - leave applied for	- sick	122 M +	9 F =	131
	- other	17 M +	1 F =	18
Total absent - reasons known		173 M +	12 F =	185
Number absent without leave	- no reason given	51 M +	4 F =	55
	- legal action pending	84 M +	1 F =	85
Total absent without leave		135 M +	5 F =	140
Total number of people with warrants		1204 M +	62 F =	1266

WEEKLY STATES FOR THE WEEK ENDING: 4TH JULY, 1993

	Full-time Inmates		All Inmates Full-time + PD	
	No.	Date	No.	Date
Highest weekly state, year ending previous week	6405	13/6/93	7658	27/6/93
Lowest weekly state, year ending previous week	5995	3/1/93	7102	7/6/93
State for previous week	6386	27/6/93	7658	27/6/93
State for this week	6399	4/7/93	7665	4/7/93

WEEKLY STATES AT MIDNIGHT ON: 1ST AUGUST, 1993

FULL-TIME INMATES	INMATES					*Accommodation in				Beds +/- **	Segregation		Protection	
	Males		Females		Total	Single Cells	Multi Cells	Dorm	Total Beds		M	F	M	F
	U/S	S	U/S	S										
Goulburn (Main)	75	382	-	-	457	314	55	-	369	-88	12	-	285	-
Maitland	52	80	-	-	132	51	76	-	127	-5	3	-	15	-
Long Bay Complex														
- Special Purpose Centre	16	28	-	3	47	60	-	-	60	13	-	-	-	-
M - L. B. Hospital - Med.	3	20	-	-	23	16	12	-	28	5	-	-	-	-
A - L. B. Hospital - Psych.	30	47	-	-	77	84	-	-	84	7	-	-	-	-
X - Prince Henry Annexe	1	5	-	-	6	-	-	7	7	1	-	-	-	-
I - Reception & Industrial	64	341	-	-	405	410	2	-	412	7	15	-	41	-
M - Special Care C. C.														
U - Special Care Unit	1	20	-	-	21	27	-	-	27	6	-	-	-	-
M - Crisis Support Unit	4	4	-	1	9	-	18	-	18	9	-	-	-	-
- Lifestyles Unit	-	6	-	-	6	-	8	-	8	2	-	-	-	-
- Remand Centre	335	16	-	-	351	216	2	8	226	-125	2	-	51	-
Lithgow	77	208	-	-	285	298	-	-	298	13	2	-	30	-
John Morony	33	177	-	-	210	232	18	-	250	40	-	-	1	-
Tamworth	18	39	-	-	57	-	66	-	66	9	-	-	2	-
Sub-total	709	1373	0	4	2086	1708	257	15	1980	-106	34	0	425	0
Bathurst (Main)	48	154	-	-	202	220	4	-	224	22	8	-	1	-
M Broken Hill	13	27	-	1	41	14	14	-	28	-13	-	-	-	-
E Cessnock	46	404	-	-	450	407	50	-	457	7	1	-	9	-
D Cooma	12	145	-	-	157	112	-	8	120	-37	-	-	-	-
I Grafton (Main)	26	36	3	2	67	42	-	12	54	-13	1	-	1	-
U Mulawa	-	-	77	152	229	162	52	8	222	-7	-	2	-	6
M Parramatta	277	127	-	-	404	292	-	-	292	-112	2	-	-	-
Parklea N.W.R.	46	200	-	-	263	313	-	-	313	50	-	-	1	-
- Work Release	-	17	-	-										
Junee (Medium)	52	322	-	-	374	368	16	-	384	10	5	-	-	-
Sub-total	520	1432	80	155	2187	1930	136	28	2094	-93	17	2	12	6
Berrima	8	53	-	-	61	57	4	-	61	0	-	-	-	-
Emu Plains	9	135	-	-	144	116	2	-	118	-26	-	-	-	-
Norma Parker N.W.R.	-	-	6	39	70	26	38	-	64	-6	-	-	-	-
- Work Release	-	-	3	22										
M Silverwater N.W.R.	15	186	-	-	339	45	408	-	453	114	-	-	-	-
I - Work Release	7	131	-	-										
N Goulburn (X-Wing)	8	104	-	-	112	90	-	-	90	-22	-	-	-	-
I Bathurst (X-Wing)	15	80	-	-	95	89	-	-	89	-6	-	-	-	-
M Grafton (C-Unit)	7	97	-	-	104	96	-	-	96	-8	-	-	-	-
U Training Centre (Long Bay)	9	276	-	-	285	211	-	-	211	-74	-	-	-	-
M St Heliers	-	233	-	-	233	184	-	5	189	-44	-	-	-	-
Glen Innes	-	146	-	-	146	154	-	-	154	8	-	-	-	-
Mannus	4	140	-	-	144	81	48	12	141	-3	-	-	-	-
Oberon	9	40	-	-	49	80	-	-	80	31	-	-	-	-
Kirkconnell	13	170	-	-	183	70	60	-	130	-53	-	-	-	-
Junee (Minimum)	18	185	-	-	203	228	-	-	228	25	-	-	-	-
Sub-total	122	1976	9	61	2168	1527	560	17	2104	-64	0	0	0	0
TOTAL FULL-TIME	1351	4781	89	220	6441	5165	953	60	6178	-263	51	2	437	6

* Design accommodation in uncrowded conditions - amended 21st June, 1993.

N.W.R. = Non Work Release

** Difference between number of beds in uncrowded conditions and number of inmates.

S = Sentenced inmates (not including appellants) U/S = Unsented inmates (including appellants, trials, remandees and deportees)

Included in the above figures are:

Number of fine defaulters (in gaol for no other reason)	96 M +	11 F =	107	(including 0 at Junee)
Number of inmates on appeal	582 M +	53 F =	635	(including 70 at Junee)
Number of inmates on remand or for trial	763 M +	36 F =	799	(including 0 at Junee)
Number of juveniles under 18 years	0 M +	0 F =	0	(including 0 at Junee)
Total full-time inmates =	5864 (at DOCS institutions)	+ 577 (at Junee)	=	6441

WEEKLY STATES FOR THE WEEK ENDING: 1ST AUGUST, 1993

(P.D.'S)	People with warrants			Attending			No.* Beds	Beds* +/-
	Stage1	Stage2	Total	Stage1	Stage2	Total		
Campbelltown	76	43	119	43	41	84	52	9
Emu Plains	47	33	80	26	33	59	66	40
Grafton	37	20	57	25	20	45	50	25
Malabar	139	17	156	98	16	114	164	66
Malabar Mid-week	52	24	76	38	20	58	164	126
Parramatta	35	4	39	20	4	24	33	13
St Heliers	31	15	46	23	14	37	25	2
Silverwater	121	70	191	86	66	152	110	24
Silverwater Mid-week	55	32	87	36	28	64	110	74
Tomago	111	32	143	69	29	98	96	27
Windsor	112	41	153	59	34	93	60	1
Administration**	6	40	46	0	38	38	0	0
Total Males	822	371	1193	523	343	866	930	407

Merinda	34	24	58	20	20	40	52	32
Administration**	0	0	0	0	0	0	0	0
Total Females	34	24	58	20	20	40	52	32

TOTAL P.D.'S	856	395	1251	543	363	906	982	439
---------------------	------------	------------	-------------	------------	------------	------------	------------	------------

* Number of free beds calculated on the numbers attending in Stage 1 and assuming uncrowded conditions.

Amended 28th June, 1992.

** Administration Stage 1 comprises detainees who have failed to attend for more than 8 consecutive weeks.

** Administration Stage 2 comprises Stage 2 detainees not attached to any particular PDC.

The total number of people with warrants comprises:

Number attending		866	40	906
Number in full-time custody	sentenced—one month or less	4 M +	0 F =	4
	sentenced—more than one month	7 M +	0 F =	7
	remand	12 M +	0 F =	12
Number on appeal with bail		22 M +	1 F =	23
Number absent — leave applied for	— sick	107 M +	10 F =	117
	— other	15 M +	5 F =	20
Total absent — reasons known		167 M +	16 F =	183
Number absent without leave	— no reason given	77 M +	1 F =	78
	— legal action pending	83 M +	1 F =	84
Total absent without leave		160 M +	2 F =	162
Total number of people with warrants		1193 M +	58 F =	1251

WEEKLY STATES FOR THE WEEK ENDING:

1ST AUGUST, 1993

	Full-time Inmates		All Inmates Full-time + PD	
	No.	Date	No.	Date
Highest weekly state, year ending previous week	6438	18/7/93	7701	18/7/93
Lowest weekly state, year ending previous week	5995	3/1/93	7102	7/2/93
State for previous week (Amended figure)	6433	25/7/93	7687	25/7/93
State for this week	6441	1/8/93	7692	1/8/93

WEEKLY STATES AT MIDNIGHT ON: 5TH SEPTEMBER, 1993

FULL-TIME INMATES	INMATES					*Accommodation in				Beds +/- **	Segregation		Protection	
	Males		Females		Total	Single Cells	Multi Cells	Dorm	Total Beds		M	F	M	F
	U/S	S	U/S	S										
Goulburn (Main)	67	369	-	-	436	314	55	-	369	-67	7	-	294	-
Maitland	58	83	-	-	141	51	76	-	127	-14	1	-	19	-
Long Bay Complex														
- Special Purpose Centre	14	28	-	3	45	60	-	-	60	15	-	-	-	-
M - L. B. Hospital - Med.	6	22	-	-	28	16	12	-	28	0	-	-	-	-
A - L. B. Hospital - Psych.	36	41	-	-	77	84	-	-	84	7	-	-	-	-
X - Prince Henry Annexe	3	4	-	-	7	-	-	7	7	0	-	-	-	-
I - Reception & Industrial	68	355	-	-	423	410	2	-	412	-11	19	-	34	-
M - Special Care C. C.														
U - Special Care Unit	3	18	-	-	21	27	-	-	27	6	-	-	-	-
M - Crisis Support Unit	4	5	-	1	10	-	18	-	18	8	-	-	-	-
- Lifestyles Unit	-	5	-	-	5	-	8	-	8	3	-	-	-	-
- Remand Centre	345	19	-	-	364	216	2	8	226	-138	1	-	61	-
Lithgow	73	194	-	-	267	298	-	-	298	31	2	-	31	-
Sub-total	677	1143	0	4	1824	1476	173	15	1664	-160	30	0	439	0
M Bathurst (Main)	54	169	-	-	223	220	4	-	224	1	2	-	2	-
M Broken Hill	8	28	-	-	36	14	14	-	28	-8	-	-	-	-
E Cooma	14	147	-	-	161	112	-	8	120	-41	-	-	-	-
D Grafton (Main)	25	32	3	1	61	42	-	12	54	-7	-	-	4	-
I Mulawa	-	-	82	152	234	162	52	8	222	-12	-	2	-	8
U Parramatta	250	158	-	-	408	292	-	-	292	-116	1	-	-	-
M Parklea N.W.R.	39	226	-	-	277	313	-	-	313	36	-	-	2	-
- Work Release	-	12	-	-										
Junee (Medium)	53	320	-	-	373	368	16	-	384	11	7	-	-	-
Tamworth	22	33	-	-	55	-	66	-	66	11	2	-	2	-
Sub-total	465	1125	85	153	1828	1523	152	28	1703	-125	12	2	10	8
M Berrima	8	53	-	-	61	57	4	-	61	0	-	-	-	-
Emu Plains	4	141	-	-	145	116	2	-	118	-27	-	-	-	-
Norma Parker N.W.R.	-	-	7	40	68	26	38	-	64	-4	-	-	-	-
- Work Release	-	-	1	20										
M Silverwater N.W.R.	12	152	-	-	329	45	408	-	453	124	-	-	-	-
I - Work Release	3	162	-	-										
N Goulburn (X-Wing)	7	103	-	-	110	90	-	-	90	-20	-	-	-	-
I Bathurst (X-Wing)	11	78	-	-	89	89	-	-	89	0	-	-	-	-
M Grafton (C-Unit)	3	102	-	-	105	96	-	-	96	-9	-	-	-	-
U Training Centre (Long Bay)	6	270	-	-	276	211	-	-	211	-65	-	-	-	-
M St Heliers	-	227	-	-	227	184	-	5	189	-38	-	-	-	-
Glen Innes	-	139	-	-	139	154	-	-	154	15	-	-	-	-
Mannus	6	129	-	-	135	81	48	12	141	6	-	-	-	-
Oberon	8	50	-	-	58	80	-	-	80	22	-	-	-	-
Kirkconnell	13	175	-	-	188	70	60	-	130	-58	-	-	-	-
Junee (Minimum)	16	174	-	-	190	228	-	-	228	38	-	-	-	-
John Morony	35	184	-	-	219	232	18	-	250	31	-	-	1	-
Cessnock	46	394	-	-	440	407	50	-	457	17	-	-	3	-
Sub-total	178	2533	8	60	2779	2166	628	17	2811	32	0	0	4	0
TOTAL FULL-TIME	1320	4801	93	217	6431	5165	953	60	6178	-253	42	2	453	8

* Design accommodation in uncrowded conditions - amended 21st June, 1993.

N.W.R. = Non Work Release

**Difference between number of beds in uncrowded conditions and number of inmates.

S=Sentenced inmates (not including appellants) U/S=Unsentenced inmates (including appellants, trials, remandees and deportees)

Included in the above figures are:

Number of fine defaulters (in gaol for no other reason)	66 M +	12 F =	78	(including	0 at Junee)
Number of inmates on appeal	556 M +	46 F =	602	(including	69 at Junee)
Number of inmates on remand or for trial	759 M +	47 F =	806	(including	0 at Junee)
Number of juveniles under 18 years	0 M +	0 F =	0	(including	0 at Junee)
Total full-time inmates =	5868 (at DOCS institutions)	+	563 (at Junee)	=	6431

WEEKLY STATES FOR THE WEEK ENDING: 5TH SEPTEMBER, 1993

(P.D.'S)	People with warrants			Attending			No.* Beds	Beds* +/-
	Stage1	Stage2	Total	Stage1	Stage2	Total		
Campbelltown	81	39	120	47	38	85	52	5
Emu Plains	60	32	92	39	30	69	66	27
Grafton	38	21	59	29	19	48	50	21
Malabar	124	1	125	90	1	91	164	74
Malabar Mid-week	41	4	45	31	3	34	164	133
Parramatta	37	3	40	23	3	26	33	10
St Heliers	33	15	48	25	15	40	25	0
Silverwater	116	65	181	78	62	140	110	32
Silverwater Mid-week	56	36	92	33	32	65	110	77
Tomago	111	29	140	73	29	102	96	23
Windsor	105	41	146	60	37	97	60	0
Administration**	8	74	82	0	68	68	0	0
Total Males	810	360	1170	528	337	865	930	402

Merinda	44	23	67	31	19	50	52	21
Administration**	0	0	0	0	0	0	0	0
Total Females	44	23	67	31	19	50	52	21

TOTAL P.D.'S	854	383	1237	559	356	915	982	423
---------------------	------------	------------	-------------	------------	------------	------------	------------	------------

* Number of free beds calculated on the numbers attending in Stage 1 and assuming uncrowded conditions.
Amended 28th June, 1992.

** Administration Stage 1 comprises detainees who have failed to attend for more than 8 consecutive weeks.

** Administration Stage 2 comprises Stage 2 detainees not attached to any particular PDC.

The total number of people with warrants comprises:

Number attending		865	50	915
Number in full-time custody	sentenced - one month or less	1 M +	0 F =	1
	sentenced - more than one month	8 M +	0 F =	8
	remand	6 M +	0 F =	6
Number on appeal with bail		23 M +	1 F =	24
Number absent - leave applied for	- sick	109 M +	10 F =	119
	- other	15 M +	0 F =	15
Total absent - reasons known		162 M +	11 F =	173
Number absent without leave	- no reason given	66 M +	5 F =	71
	- legal action pending	77 M +	1 F =	78
Total absent without leave		143 M +	6 F =	149
Total number of people with warrants		1170 M +	67 F =	1237

WEEKLY STATES FOR THE WEEK ENDING: 5TH SEPTEMBER, 1993

	Full-time Inmates		All Inmates Full-time + PD	
	No.	Date	No.	Date
Highest weekly state, year ending previous week	6441	1/8/93	7701	18/7/93
Lowest weekly state, year ending previous week	5995	3/1/93	7102	7/2/93
State for previous week	6408	29/8/93	7660	29/8/93
State for this week	6431	5/9/93	7668	5/9/93

WEEKLY STATES AT MIDNIGHT ON: 3RD OCTOBER, 1993

FULL-TIME INMATES	INMATES					*Accommodation in				Beds +/- **	Segregation		Protection	
	Males		Females		Total	Single Cells	Multi Cells	Dorm	Total Beds		M	F	M	F
	U/S	S	U/S	S										
Goulburn (Main)	74	370	-	-	444	314	55	-	369	-75	6	-	302	-
Maitland	53	85	-	-	138	51	76	-	127	-11	4	-	14	-
Long Bay Complex														
- Special Purpose Centre	13	28	1	2	44	60	-	-	60	16	-	-	-	-
M - L. B. Hospital - Med.	4	24	-	-	28	16	12	-	28	0	-	-	-	-
A - L. B. Hospital - Psych.	41	34	-	-	75	84	-	-	84	9	-	-	-	-
X - Prince Henry Annexe	2	4	-	-	6	-	-	7	7	1	-	-	-	-
I - Reception & Industrial	63	344	-	-	407	410	2	-	412	5	22	-	30	-
M - Special Care C. C.														
U - Special Care Unit	2	21	-	-	23	27	-	-	27	4	-	-	-	-
M - Crisis Support Unit	2	7	-	1	10	-	18	-	18	8	-	-	-	-
- Lifestyles Unit	-	6	-	-	6	-	8	-	8	2	-	-	-	-
- Remand Centre	337	14	-	-	351	216	2	8	226	-125	1	-	52	-
Lithgow	72	210	-	-	282	298	-	-	298	16	2	-	31	-
Sub-total	663	1147	1	3	1814	1476	173	15	1664	-150	35	0	429	0
M Bathurst (Main)	49	149	-	-	198	220	4	-	224	26	1	-	5	-
E Broken Hill	7	27	-	2	36	14	14	-	28	-8	-	-	-	-
D Cooma	11	150	-	-	161	112	-	8	120	-41	-	-	-	-
I Grafton (Main)	20	40	5	3	68	42	-	12	54	-14	-	-	6	-
U Mulawa	-	-	85	143	228	162	52	8	222	-6	-	3	-	8
M Parramatta	271	134	-	-	405	292	-	-	292	-113	1	-	-	-
M Parklea N.W.R.	40	189	-	-	243	313	-	-	313	70	-	-	2	-
- Work Release	-	14	-	-										
June (Medium)	50	320	-	-	370	368	16	-	384	14	4	-	-	-
Tamworth	19	40	-	-	59	-	66	-	66	7	1	-	2	-
Sub-total	467	1063	90	148	1768	1523	152	28	1703	-65	7	3	15	8
M Berrima	6	54	-	-	60	57	4	-	61	1	-	-	-	-
Emu Plains	4	129	-	-	133	116	2	-	118	-15	-	-	-	-
Norma Parker N.W.R.	-	-	8	42	71	16	46	28	90	19	-	-	-	-
- Work Release	-	-	1	20										
M Silverwater N.W.R.	10	212	-	-	360	45	408	-	453	93	-	-	-	-
I - Work Release	1	137	-	-										
N Goulburn (X-Wing)	5	107	-	-	112	90	-	-	90	-22	-	-	-	-
I Bathurst (X-Wing)	14	100	-	-	114	89	-	-	89	-25	-	-	-	-
M Grafton (C-Unit)	3	104	-	-	107	96	-	-	96	-11	-	-	-	-
U Training Centre (Long Bay)	7	280	-	-	287	211	-	-	211	-76	-	-	-	-
M St Heliers	-	235	-	-	235	184	-	5	189	-46	-	-	-	-
Glen Innes	-	136	-	-	136	154	-	-	154	18	-	-	-	-
Mannus	3	131	-	-	134	81	48	12	141	7	-	-	-	-
Oberon	10	64	-	-	74	80	-	-	80	6	-	-	-	-
Kirkconnell	12	181	-	-	193	70	60	-	130	-63	-	-	-	-
June (Minimum)	19	195	-	-	214	228	-	-	228	14	-	-	-	-
John Morony	38	178	-	-	216	232	18	-	250	34	-	-	1	-
Cessnock	46	401	-	-	447	407	50	-	457	10	1	-	6	-
Sub-total	178	2644	9	62	2893	2156	636	45	2837	-56	1	0	7	0
TOTAL FULL-TIME	1308	4854	100	213	6475	5155	961	88	6204	-271	43	3	451	8

* Design accommodation in uncrowded conditions - amended 12th September, 1993. N.W.R. = Non Work Release

** Difference between number of beds in uncrowded conditions and number of inmates.

S = Sentenced inmates (not including appellants) U/S = Unsented inmates (including appellants, trials, remandees and deportees)

Included in the above figures are:

Number of fine defaulters (in gaol for no other reason)	69 M +	16 F =	85	(including 0 at June)
Number of inmates on appeal	543 M +	55 F =	598	(including 69 at June)
Number of inmates on remand or for trial	763 M +	45 F =	808	(including 0 at June)
Number of juveniles under 18 years	0 M +	0 F =	0	(including 0 at June)
Total full-time inmates =	5891 (at DOCS institutions)	+ 584 (at June)	= 6475	

WEEKLY STATES FOR THE WEEK ENDING: 3RD OCTOBER, 1993

PERIODIC DETAINEES (P.D.'S)	People with warrants			Attending			No.* Beds	Beds* +/-
	Stage1	Stage2	Total	Stage1	Stage2	Total		
Campbelltown	72	37	109	43	35	78	52	9
Emu Plains	52	29	81	30	23	53	66	36
Grafton	31	24	55	17	22	39	50	33
Malabar	117	1	118	74	1	75	164	90
Malabar Mid-week	48	3	51	37	3	40	164	127
Parramatta	41	3	44	26	3	29	33	7
St Heliers	30	19	49	18	18	36	25	7
Silverwater	127	68	195	85	63	148	110	25
Silverwater Mid-week	54	37	91	35	34	69	110	75
Tomago	95	35	130	54	32	86	96	42
Windsor	85	39	124	51	31	82	60	9
Administration**	7	47	54	0	45	45	0	0
Administration Mid-Week	0	29	29	0	28	28	0	0
Wollongong	10	6	16	7	6	13	82	75
Total Males	769	377	1146	477	344	821	1012	535

Merinda	50	25	75	36	20	56	52	16
Administration**	0	0	0	0	0	0	0	0
Total Females	50	25	75	36	20	56	52	16

TOTAL P.D.'S	819	402	1221	513	364	877	1064	551
---------------------	------------	------------	-------------	------------	------------	------------	-------------	------------

* Number of free beds calculated on the numbers attending in Stage 1 and assuming uncrowded conditions.
Amended 28th June, 1992.

** Administration Stage 1 comprises detainees who have failed to attend for more than 8 consecutive weeks.

** Administration Stage 2 comprises Stage 2 detainees not attached to any particular PDC.

The total number of people with warrants comprises:

Number attending		821	56	877
Number in full-time custody				
sentenced—one month or less		1 M +	0 F =	1
sentenced—more than one month		7 M +	0 F =	7
remand		6 M +	0 F =	6
Number on appeal with bail		24 M +	1 F =	25
Number absent — leave applied for				
— sick		133 M +	12 F =	145
— other		20 M +	1 F =	21
Total absent — reasons known		191 M +	14 F =	205
Number absent without leave				
— no reason given		67 M +	2 F =	69
— legal action pending		67 M +	3 F =	70
Total absent without leave		134 M +	5 F =	139
Total number of people with warrants		1146 M +	75 F =	1221

WEEKLY STATES FOR THE WEEK ENDING: 3RD OCTOBER, 1993

	Full-time Inmates		All Inmates Full-time + PD	
	No.	Date	No.	Date
Highest weekly state, year ending previous week	6463	19/9/93	7701	18/7/93
Lowest weekly state, year ending previous week	5995	3/1/93	7102	7/2/93
State for previous week (Amended Figure)	6460	26/9/93	7686	26/9/93
State for this week	6475	3/10/93	7696	3/10/93

WEEKLY STATES AT MIDNIGHT ON: 7TH NOVEMBER, 1993

FULL-TIME INMATES		INMATES				*Accommodation in				Beds +/- **	Segreg- ation		Protect ion		
		Males		Females		Total	Single Cells	Multi Cells	Dorm		Total Beds	M	F	M	F
		U/S	S	U/S	S										
	Goulburn (Main)	86	350	-	-	436	314	55	-	369	-67	12	-	287	-
	Maitland	51	92	-	-	143	51	76	-	127	-16	1	-	17	-
	Long Bay Complex														
	- Special Purpose Centre	12	30	1	2	45	60	-	-	60	15	-	-	-	-
M	- L. B. Hospital - Med.	8	22	-	-	30	16	12	-	28	-2	-	-	-	-
A	- L. B. Hospital - Psych.	41	32	-	-	73	84	-	-	84	11	-	-	-	-
X	- Prince Henry Annexe	1	5	-	-	6	-	-	7	7	1	-	-	-	-
I	- Reception & Industrial	73	352	-	-	425	410	2	-	412	-13	12	-	36	-
M	- Special Care C. C.														
U	- Special Care Unit	-	25	-	-	25	27	-	-	27	2	-	-	-	-
M	- Crisis Support Unit	1	9	-	-	10	-	18	-	18	8	-	-	-	-
	- Lifestyles Unit	1	2	-	-	3	-	8	-	8	5	-	-	-	-
	- Remand Centre	327	17	-	-	344	216	2	8	226	-118	-	-	55	-
	Lithgow	68	198	-	-	266	298	-	-	298	32	2	-	27	-
	Sub-total	669	1134	1	2	1806	1476	173	15	1664	-142	27	0	422	0
	Bathurst (Main)	50	148	-	-	198	220	4	-	224	26	1	-	4	-
M	Broken Hill	5	32	-	2	39	14	14	-	28	-11	-	-	-	-
E	Cooma	8	152	-	-	160	112	-	8	120	-40	-	-	-	-
D	Grafton (Main)	25	37	2	2	66	42	-	12	54	-12	1	-	6	-
I	Mulawa	-	-	89	140	229	162	52	8	222	-7	-	4	-	4
U	Parramatta	244	187	-	-	431	292	-	-	292	-139	1	-	-	-
M	Parklea N.W.R.	45	180	-	-	240	313	-	-	313	73	-	-	2	-
	- Work Release	-	15	-	-										
	Junee (Medium)	49	313	-	-	362	368	16	-	384	22	2	-	-	-
	Tamworth	15	39	-	-	54	-	66	-	66	12	-	-	1	-
	Sub-total	441	1103	91	144	1779	1523	152	28	1703	-76	5	4	13	4
	Berrima	6	52	-	-	58	57	4	-	61	3	-	-	-	-
	Emu Plains	7	143	-	-	150	116	2	-	118	-32	-	-	-	-
	Norma Parker N.W.R.	-	-	9	43	73	16	46	28	90	17	-	-	-	-
	- Work Release	-	-	1	20										
M	Silverwater N.W.R.	12	199	-	-	342	45	408	-	453	111	-	-	-	-
I	- Work Release	1	130	-	-										
N	Goulburn (X-Wing)	5	107	-	-	112	90	-	-	90	-22	-	-	-	-
I	Bathurst (X-Wing)	11	98	-	-	109	89	-	-	89	-20	-	-	-	-
M	Grafton (C-Unit)	7	101	-	-	108	96	-	-	96	-12	-	-	-	-
U	Training Centre (Long Bay)	7	277	-	-	284	211	-	-	211	-73	-	-	-	-
M	St Heliers	-	246	-	-	246	184	-	5	189	-57	-	-	-	-
	Glen Innes	-	129	-	-	129	154	-	-	154	25	-	-	-	-
	Mannus	6	134	-	-	140	81	48	12	141	1	-	-	-	-
	Oberon	11	76	-	-	87	80	-	-	80	-7	-	-	-	-
	Kirkconnell	9	182	-	-	191	70	60	-	130	-61	-	-	-	-
	Junee (Minimum)	21	200	-	-	221	228	-	-	228	7	2	-	-	-
	John Morony	40	183	-	-	223	232	18	-	250	27	-	-	-	-
	Cessnock	43	406	-	-	449	407	50	-	457	8	-	-	7	-
	Sub-total	186	2663	10	63	2922	2156	636	45	2837	-85	2	0	7	0
	TOTAL FULL-TIME	1296	4900	102	209	6507	5155	961	88	6204	-303	34	4	442	4

* Design accommodation in uncrowded conditions -- amended 12th September, 1993. N.W.R.=Non Work Release

**Difference between number of beds in uncrowded conditions and number of inmates.

S=Sentenced inmates (not including appellants) U/S=Unsentenced inmates (including appellants, trials, remandees and deportees)

Included in the above figures are:

Number of fine defaulters (in gaol for no other reason)	67 M +	13 F =	80	(including 0 at Junee)
Number of inmates on appeal	579 M +	55 F =	634	(including 70 at Junee)
Number of inmates on remand or for trial	715 M +	45 F =	760	(including 0 at Junee)
Number of juveniles under 18 years	0 M +	0 F =	0	(including 0 at Junee)
Total full-time inmates =	5924 (at DOCS institutions)	+ 583 (at Junee)	= 6507	

WEEKLY STATES FOR THE WEEK ENDING: 7TH NOVEMBER, 1993

PERIODIC DETAINEES (P.D.'S)	People with warrants			Attending			No.*	Beds*
	Stage1	Stage2	Total	Stage1	Stage2	Total	Beds	+/-
Campbelltown	82	29	111	52	28	80	52	0
Emu Plains	52	26	78	35	24	59	66	31
Grafton	34	26	60	22	25	47	50	28
Malabar	116	8	124	79	8	87	164	85
Malabar Mid-week	49	4	53	36	4	40	164	128
Parramatta	37	6	43	24	6	30	33	9
St Heliers	28	24	52	19	24	43	25	6
Silverwater	124	75	199	84	72	156	110	26
Silverwater Mid-week	64	37	101	45	35	80	110	65
Tomago	106	35	141	69	33	102	96	27
Windsor	86	33	119	57	27	84	60	3
Administration**	7	41	48	0	40	40	0	0
Administration Midweek	1	26	27	0	26	26	0	0
Wollongong	19	10	29	14	10	24	82	68
Total Males	805	380	1185	536	362	898	1012	476

Merinda	53	24	77	35	20	55	52	17
Administration**	0	0	0	0	0	0	0	0
Total Females	53	24	77	35	20	55	52	17

TOTAL P.D.'S	858	404	1262	571	382	953	1064	493
---------------------	------------	------------	-------------	------------	------------	------------	-------------	------------

* Number of free beds calculated on the numbers attending in Stage 1 and assuming uncrowded conditions.
Amended 28th June, 1992.

** Administration Stage 1 comprises detainees who have failed to attend for more than 8 consecutive weeks.

** Administration Stage 2 comprises Stage 2 detainees not attached to any particular PDC.

The total number of people with warrants comprises:

Number attending	898	55	953
Number in full-time custody			
sentenced—one month or less	0 M +	0 F =	0
sentenced—more than one month	6 M +	0 F =	6
remand	7 M +	0 F =	7
Number on appeal with bail	23 M +	0 F =	23
Number absent — leave applied for			
— sick	94 M +	13 F =	107
— other	16 M +	1 F =	17
Total absent — reasons known	146 M +	14 F =	160
Number absent without leave			
— no reason given	62 M +	7 F =	69
— legal action pending	79 M +	1 F =	80
Total absent without leave	141 M +	8 F =	149
Total number of people with warrants	1185 M +	77 F =	1262

WEEKLY STATES FOR THE WEEK ENDING: 7TH NOVEMBER, 1993

	Full-time Inmates		All Inmates Full-time + PD	
	No.	Date	No.	Date
Highest weekly state, year ending previous week	6526	24/10/93	7784	24/10/93
Lowest weekly state, year ending previous week	5995	3/1/93	7102	7/2/93
State for previous week	6495	31/10/93	7759	31/10/93
State for this week	6507	7/11/93	7769	7/11/93

WEEKLY STATES AT MIDNIGHT ON: 5TH DECEMBER, 1993

FULL-TIME INMATES		INMATES				*Accommodation in				Beds +/- **	Segreg-		Protect-		
		Males		Females		Total	Single Cells	Multi Cells	Dorm		Total Beds	ation		ion	
		U/S	S	U/S	S							M	F	M	F
	Goulburn (Main)	76	383	--	--	459	314	55	--	369	-90	9	--	305	--
	Maitland	44	84	--	--	128	51	76	--	127	-1	2	--	19	--
	Long Bay Complex														
	- Special Purpose Centre	11	33	1	2	47	60	--	--	60	13	--	--	--	--
M	- L. B. Hospital - Med.	5	22	--	1	28#	16	12	--	28	28	--	--	--	--
A	- L. B. Hospital - Psych.	33	44	--	--	77	84	--	--	84	7	--	--	--	--
X	- Prince Henry Annexe	--	4	--	--	4	--	--	7	7	3	--	--	--	--
I	- Reception & Industrial	75	366	--	--	441	410	2	--	412	-29	12	--	37	--
M	- Special Care C. C.														
U	- Special Care Unit	--	20	--	--	20	27	--	--	27	7	--	--	--	--
M	- Crisis Support Unit	1	8	--	--	9	--	18	--	18	9	--	--	--	--
	- Lifestyles Unit	1	4	--	--	5	--	8	--	8	3	--	--	--	--
	- Remand Centre	295	21	--	--	316	216	2	8	226	-90	--	--	54	--
	Lithgow	66	207	--	--	273	298	--	--	298	25	--	--	25	--
	Sub-total	607	1196	1	3	1807	1476	173	15	1664	-115	23	0	440	0
	Bathurst (Main)	46	152	--	--	198	220	4	--	224	26	1	--	4	--
M	Broken Hill	6	30	--	1	37	14	14	--	28	-9	--	--	--	--
E	Cooma	11	148	--	--	159	112	--	8	120	-39	--	--	--	--
D	Grafton (Main)	15	44	2	2	63	42	--	12	54	-9	1	--	6	--
I	Mulawa	--	--	86	129	215	162	52	8	222	7	--	2	--	6
U	Parramatta	250	153	--	--	403	292	--	--	292	-111	1	--	--	--
M	Parklea N.W.R.	48	196	--	--	257	313	--	--	313	56	--	--	3	--
	- Work Release	--	13	--	--										
	Junee (Medium)	48	349	--	--	397	368	16	--	384	-13	4	--	--	--
	Tamworth	6	40	--	--	46	--	66	--	66	20	--	--	4	--
	Sub-total	430	1125	88	132	1775	1523	152	28	1703	-72	7	2	17	6
	Berrima	4	52	--	--	56	57	4	--	61	5	--	--	--	--
	Emu Plains	6	140	--	--	146	116	2	--	118	-28	--	--	--	--
	Norma Parker N.W.R.	--	--	8	50	75	16	46	28	90	15	--	--	--	--
	- Work Release	--	--	--	17										
M	Silverwater N.W.R.	10	183	--	--	330	45	408	--	453	123	--	--	--	--
I	- Work Release	5	132	--	--										
N	Goulburn (X-Wing)	5	105	--	--	110	90	--	--	90	-20	--	--	--	--
I	Bathurst (X-Wing)	11	101	--	--	112	89	--	--	89	-23	--	--	--	--
M	Grafton (C-Unit)	6	102	--	--	108	96	--	--	96	-12	--	--	--	--
U	Training Centre (Long Bay)	7	276	--	--	283	211	--	--	211	-72	--	--	--	--
M	St Heliers	--	218	--	--	218	184	--	5	189	-29	--	--	--	--
	Glen Innes	--	130	--	--	130	154	--	--	154	24	--	--	--	--
	Mannus	5	129	--	--	134	81	48	12	141	7	--	--	--	--
	Oberon	--	89	--	--	89	80	--	--	80	-9	--	--	--	--
	Kirkconnell	10	184	--	--	194	70	60	--	130	-64	--	--	--	--
	Junee (Minimum)	14	167	--	--	181	228	--	--	228	47	--	--	--	--
	John Morony	34	182	--	--	216	232	18	--	250	34	--	--	--	--
	Cessnock	45	398	--	--	443	407	50	--	457	14	1	--	10	--
	Sub-total	162	2588	8	67	2825	2156	636	45	2837	12	1	0	10	0
	TOTAL FULL-TIME	1199	4909	97	202	6407#	5155	961	88	6204	-175	31	2	467	6

* Design accommodation in uncrowded conditions - amended 12th September, 1993. N.W.R.=Non Work Release

**Difference between number of beds in uncrowded conditions and number of inmates.

S=Sentenced inmates (not including appellants) U/S=Unsentenced inmates (including appellants, trials, remandees and deportees)

Included in the above figures are:

Number of fine defaulters (in gaol for no other reason)	67 M +	8 F =	75	(including	0 at Junee)
Number of inmates on appeal	531 M +	52 F =	583	(including	62 at Junee)
Number of inmates on remand or for trial	665 M +	45 F =	710	(including	0 at Junee)
Number of juveniles under 18 years	0 M +	0 F =	0	(including	0 at Junee)
Total full-time inmates =	5829	(at DOCS institutions)	+	578 (at Junee)	= 6407#

Preliminary figure

***** Research & Statistics *****

WEEKLY STATES FOR THE WEEK ENDING: 5TH DECEMBER, 1993

(P.D.'S)	People with warrants			Attending			No.*	Beds*
	Stage1	Stage2	Total	Stage1	Stage2	Total	Beds	+/-
Campbelltown	78	31	109	47	29	76	52	5
Emu Plains	53	24	77	34	23	57	66	32
Grafton	35	23	58	24	23	47	50	26
Malabar	139	39	178	96	36	132	164	68
Malabar Mid-week	50	29	79	36	28	64	164	128
Parramatta	43	10	53	31	10	41	33	2
St Heliers	28	28	56	17	28	45	25	8
Silverwater	110	70	180	72	68	140	110	38
Silverwater Mid-week	83	37	120	59	33	92	110	51
Tomago	98	43	141	64	43	107	96	32
Windsor	78	44	122	53	41	94	60	7
Administration**	8	0	8	0	0	0	0	0
Administration Midweek	0	0	0	0	0	0	0	0
Wollongong	28	11	39	15	10	25	82	67
Total Males	831	389	1220	548	372	920	1012	464

Merinda	53	29	82	35	29	64	52	17
Administration**	0	0	0	0	0	0	0	0
Total Females	53	29	82	35	29	64	52	17

TOTAL P.D.'S	884	418	1302	583	401	984	1064	481
---------------------	------------	------------	-------------	------------	------------	------------	-------------	------------

* Number of free beds calculated on the numbers attending in Stage 1 and assuming uncrowded conditions.
Amended 28th June, 1992.

** Administration Stage 1 comprises detainees who have failed to attend for more than 8 consecutive weeks.

** Administration Stage 2 comprises Stage 2 detainees not attached to any particular PDC.

The total number of people with warrants comprises:

Number attending	920	64	984
Number in full-time custody			
sentenced - one month or less	1 M +	0 F =	1
sentenced - more than one month	7 M +	0 F =	7
remand	6 M +	0 F =	6
Number on appeal with bail	18 M +	2 F =	20
Number absent - leave applied for			
- sick	93 M +	4 F =	97
- other	27 M +	1 F =	28
Total absent - reasons known	152 M +	7 F =	159
Number absent without leave			
- no reason given	66 M +	7 F =	73
- legal action pending	82 M +	4 F =	86
Total absent without leave	148 M +	11 F =	159
Total number of people with warrants	1220 M +	82 F =	1302

WEEKLY STATES FOR THE WEEK ENDING: 5TH DECEMBER, 1993

	Full-time Inmates		All Inmates Full-time + PD	
	No.	Date	No.	Date
Highest weekly state, year ending previous week	6526	24/10/93	7784	24/10/93
Lowest weekly state, year ending previous week	5995	3/1/93	7102	7/2/93
State for previous week	6441	28/11/93	7722	28/11/93
State for this week	6407#	5/12/93	7709#	5/12/93

Preliminary figure

***** Research & Statistics *****

WEEKLY STATES AT MIDNIGHT ON: 2ND JANUARY, 1994

FULL-TIME INMATES		INMATES					*Accommodation in				Beds +/- **	Segreg-		Protect-	
		Males		Females		Total	Single Cells	Multi Cells	Dorm	Total Beds		ation		ion	
		U/S	S	U/S	S							M	F	M	F
	Goulburn (Main)	69	358	-	-	427	314	55	-	369	-58	13	-	311	-
	Maitland	42	116	-	-	158	51	76	-	127	-31	2	-	33	-
	Long Bay Complex														
	- Special Purpose Centre	14	30	1	2	47	60	-	-	60	13	-	-	-	-
M	- L. B. Hospital - Med.	7	19	-	-	26	16	12	-	28	2	-	-	-	-
A	- L. B. Hospital - Psych.	33	37	-	-	70	84	-	-	84	14	-	-	-	-
X	- Prince Henry Annexe	1	6	-	-	7	-	-	7	7	0	-	-	-	-
I	- Reception & Industrial	83	300	-	-	383	410	2	-	412	29	13	-	37	-
M	- Special Care C. C.														
U	- Special Care Unit	-	19	-	-	19	27	-	-	27	8	-	-	-	-
M	- Crisis Support Unit	2	6	-	-	8	-	18	-	18	10	-	-	-	-
	- Lifestyles Unit	1	5	-	-	6	-	8	-	8	2	-	-	-	-
	- Remand Centre	303	18	-	-	321	216	2	8	226	-95	-	-	49	-
	Lithgow	63	215	-	-	278	298	-	-	298	20	3	-	29	-
	Sub-total	618	1129	1	2	1750	1476	173	15	1664	-86	31	0	459	0
	Bathurst (Main)	55	192	-	-	247	220	4	-	224	-23	-	-	5	-
M	Broken Hill	10	31	-	1	42	14	14	-	28	-14	-	-	-	-
E	Cooma	11	145	-	-	156	112	-	8	120	-36	-	-	-	-
D	Grafton (Main)	32	39	-	1	72	42	-	12	54	-18	-	-	10	-
I	Mulawa	-	-	76	121	197	162	52	8	222	25	-	3	-	3
U	Parramatta	237	161	-	-	398	292	-	-	292	-106	-	-	-	-
M	Parklea N.W.R.	37	239	-	-	287	313	-	-	313	26	-	-	-	-
	- Work Release	-	11	-	-										
	Junee (Medium)	38	360	-	-	398	368	16	-	384	-14	4	-	-	-
	Tamworth	15	37	-	-	52	-	66	-	66	14	-	-	2	-
	Sub-total	435	1215	76	123	1849	1523	152	28	1703	-146	4	3	17	3
	Berrima	5	54	-	-	59	57	4	-	61	2	-	-	-	-
	Emu Plains	4	144	-	-	148	116	2	-	118	-30	-	-	-	-
	Norma Parker N.W.R.	-	-	9	54	79	16	46	28	90	11	-	-	-	-
	- Work Release	-	-	-	16										
M	Silverwater N.W.R.	10	182	-	-	322	45	408	-	453	131	-	-	-	-
I	- Work Release	5	125	-	-										
N	Goulburn (X-Wing)	3	110	-	-	113	90	-	-	90	-23	-	-	-	-
I	Bathurst (X-Wing)	10	94	-	-	104	89	-	-	89	-15	-	-	-	-
M	Grafton (C-Unit)	9	106	-	-	115	96	-	-	96	-19	-	-	-	-
U	Training Centre (Long Bay)	7	227	-	-	234	211	-	-	211	-23	-	-	-	-
M	St Heliers	-	216	-	-	216	184	-	5	189	-27	-	-	-	-
	Glen Innes	-	135	-	-	135	154	-	-	154	19	-	-	-	-
	Mannus	5	127	-	-	132	81	48	12	141	9	-	-	-	-
	Oberon	3	78	-	-	81	80	-	-	80	-1	-	-	-	-
	Kirkconnell	9	174	-	-	183	70	60	-	130	-53	-	-	-	-
	Junee (Minimum)	18	145	-	-	163	228	-	-	228	65	-	-	-	-
	John Morony	34	177	-	-	211	232	18	-	250	39	-	-	-	-
	Cessnock	37	393	-	-	430	407	50	-	457	27	-	-	3	-
	Sub-total	159	2487	9	70	2725	2156	636	45	2837	112	0	0	3	0
	TOTAL FULL-TIME	1212	4831	86	195	6324	5155	961	88	6204	-120	35	3	479	3

* Design accommodation in uncrowded conditions - amended 12th September, 1993. N.W.R.=Non Work Release

**Difference between number of beds in uncrowded conditions and number of inmates.

S=Sentenced inmates (not including appellants) U/S=Unsentenced inmates (including appellants, trials, remandees and deportees)

Included in the above figures are:

Number of fine defaulters (in gaol for no other reason)	67 M +	11 F =	78	(including 0 at Junee)
Number of inmates on appeal	502 M +	44 F =	546	(including 56 at Junee)
Number of inmates on remand or for trial	707 M +	41 F =	748	(including 0 at Junee)
Number of juveniles under 18 years	0 M +	0 F =	0	(including 0 at Junee)
Total full-time inmates =	5763 (at DOCS institutions)	+	561 (at Junee)	= 6324

WEEKLY STATES FOR THE WEEK ENDING: 2ND JANUARY, 1994

PERIODIC DETAINEES (P.D.'S)	People with warrants			Attending			No.* Beds	Beds* +/-
	Stage1	Stage2	Total	Stage1	Stage2	Total		
Campbelltown	76	29	105	30	26	56	52	22
Emu Plains	58	21	79	30	21	51	66	36
Grafton	31	24	55	18	21	39	50	32
Malabar	148	41	189	87	39	126	164	77
Malabar Mid-week	48	33	81	30	32	62	164	134
Parramatta	43	9	52	25	9	34	33	8
St Heliers	28	29	57	15	29	44	25	10
Silverwater	97	68	165	44	63	107	110	66
Silverwater Mid-week	97	33	130	58	29	87	110	52
Tomago	96	39	135	45	39	84	96	51
Windsor	89	33	122	39	31	70	60	21
Administration**	6	0	6	0	0	0	0	0
Administration Midweek	0	0	0	0	0	0	0	0
Wollongong	41	8	49	19	6	25	82	63
Total Males	858	367	1225	440	345	785	1012	572

Merinda	51	28	79	20	22	42	52	32
Administration**	0	0	0	0	0	0	0	0
Total Females	51	28	79	20	22	42	52	32

TOTAL P.D.'S	909	395	1304	460	367	827	1064	604
---------------------	------------	------------	-------------	------------	------------	------------	-------------	------------

* Number of free beds calculated on the numbers attending in Stage 1 and assuming uncrowded conditions.
Amended 28th June, 1992.

** Administration Stage 1 comprises detainees who have failed to attend for more than 8 consecutive weeks.

** Administration Stage 2 comprises Stage 2 detainees not attached to any particular PDC.

The total number of people with warrants comprises:

Number attending		785	42	827
Number in full-time custody				
sentenced—one month or less		0 M +	0 F =	0
sentenced—more than one month		8 M +	0 F =	8
remand		7 M +	0 F =	7
Number on appeal with bail		16 M +	1 F =	17
Number absent — leave applied for				
— sick		122 M +	15 F =	137
— other		9 M +	1 F =	10
Total absent — reasons known		162 M +	17 F =	179
Number absent without leave				
— no reason given		171 M +	20 F =	191
— legal action pending		107 M +	0 F =	107
Total absent without leave		278 M +	20 F =	298
Total number of people with warrants		1225 M +	79 F =	1304

WEEKLY STATES FOR THE WEEK ENDING: 2ND JANUARY, 1994

	Full-time Inmates		All Inmates Full-time + PD	
	No.	Date	No.	Date
Highest weekly state, year ending previous week	6526	24/10/93	7784	24/10/93
Lowest weekly state, year ending previous week	5995	3/1/93	7102	7/2/93
State for previous week	6284	26/12/93	6284#	26/12/93
State for this week	6324	2/1/94	7628	2/1/94

PDCs were closed over Christmas.

WEEKLY STATES AT MIDNIGHT ON: 6TH FEBRUARY, 1994

FULL-TIME INMATES		INMATES					*Accommodation in				Beds +/- **	Segregation		Protection	
		Males		Females		Total	Single Cells	Multi Cells	Dorm	Total Beds		M	F	M	F
		U/S	S	U/S	S										
	Goulburn (Main)	64	323	-	-	387	314	55	-	369	-18	9	-	271	-
	Maitland	54	104	-	-	158	51	76	-	127	-31	1	-	38	-
	Long Bay Complex														
	- Special Purpose Centre	12	31	1	2	46	60	-	-	60	14	-	-	-	-
M	- L. B. Hospital - Med.	5	19	-	1	25	16	12	-	28	3	-	-	-	-
A	- L. B. Hospital - Psych.	38	41	-	-	79	84	-	-	84	5	-	-	-	-
X	- Prince Henry Annexe	3	5	-	-	8	-	-	7	7	-1	-	-	-	-
I	- Reception & Industrial	76	365	-	-	441	410	2	-	412	-29	13	-	52	-
M	- Special Care C. C.														
U	- Special Care Unit	-	21	-	-	21	27	-	-	27	6	-	-	-	-
M	- Crisis Support Unit	3	3	-	-	6	-	18	-	18	12	-	-	-	-
	- Lifestyles Unit	2	5	-	-	7	-	8	-	8	1	-	-	-	-
	- Remand Centre	310	23	-	-	333	216	2	8	226	-107	-	-	63	-
	Lithgow	54	205	-	-	259	298	-	-	298	39	-	-	23	-
	Sub-total	621	1145	1	3	1770	1476	173	15	1664	-106	23	0	447	0
	Bathurst (Main)	52	176	-	-	228	220	4	-	224	-4	2	-	6	-
M	Broken Hill	11	24	-	1	36	14	14	-	28	-8	-	-	-	-
E	Cooma	12	146	-	-	158	112	-	8	120	-38	-	-	-	-
D	Grafton (Main)	38	72	-	2	112	42	-	12	54	-58	2	-	6	-
I	Mulawa	-	-	82	117	199	162	52	8	222	23	-	4	-	11
U	Parramatta	251	157	-	-	408	292	-	-	292	-116	-	-	-	-
M	Parklea N.W.R.	26	208	-	-	242	313	-	-	313	71	-	-	-	-
	- Work Release	-	8	-	-										
	June (Medium)	38	331	-	-	369	368	16	-	384	15	4	-	1	-
	Tamworth	11	48	-	-	59	-	66	-	66	7	1	-	2	-
	Sub-total	439	1170	82	120	1811	1523	152	28	1703	-108	9	4	15	11
	Berrima	4	50	-	-	54	57	4	-	61	7	-	-	-	-
	Emu Plains	6	136	-	-	142	116	2	-	118	-24	-	-	-	-
	Norma Parker N.W.R.	-	-	6	54	75	16	46	28	90	15	-	-	-	-
	- Work Release	-	-	-	15										
M	Silverwater N.W.R.	8	191	-	-	334	45	408	-	453	119	-	-	-	-
I	- Work Release	4	131	-	-										
N	Goulburn (X-Wing)	1	110	-	-	111	90	-	-	90	-21	-	-	-	-
I	Bathurst (X-Wing)	11	86	-	-	97	89	-	-	89	-8	-	-	-	-
M	Grafton (C-Unit)	5	100	-	-	105	96	-	-	96	-9	-	-	-	-
U	Training Centre (Long Bay)	10	274	-	-	284	211	-	-	211	-73	-	-	-	-
M	St Heliers	-	212	-	-	212	184	-	5	189	-23	1	-	-	-
	Glen Innes	-	127	-	-	127	154	-	-	154	27	1	-	1	-
	Mannus	7	103	-	-	110	81	48	12	141	31	-	-	-	-
	Obcron	5	73	-	-	78	80	-	-	80	2	-	-	-	-
	Kirkconnell	8	185	-	-	193	70	60	-	130	-63	-	-	-	-
	June (Minimum)	12	149	-	-	161	228	-	-	228	67	-	-	-	-
	John Morony	37	176	-	-	213	232	18	-	250	37	-	-	-	-
	Cessnock	44	357	-	-	401	407	50	-	457	56	-	-	-	-
	Sub-total	162	2460	6	69	2697	2156	636	45	2837	140	2	0	1	0
	TOTAL FULL-TIME	1222	4775	89	192	6278	5155	961	88	6204	-74	34	4	463	11

* Design accommodation in uncrowded conditions - amended 12th September, 1993. N.W.R.=Non Work Release

**Difference between number of beds in uncrowded conditions and number of inmates.

S=Sentenced inmates (not including appellants) U/S=Unsentenced inmates (including appellants, trials, remandees and deportees)

Included in the above figures are:

Number of fine defaulters (in gaol for no other reason)	70 M +	12 F =	82	(including 0 at June)
Number of inmates on appeal	497 M +	46 F =	543	(including 50 at June)
Number of inmates on remand or for trial	723 M +	43 F =	766	(including 0 at June)
Number of juveniles under 18 years	0 M +	0 F =	0	(including 0 at June)
Total full-time inmates =	5748 (at DOCS institutions)	+ 530 (at June)	= 6278	

WEEKLY STATES FOR THE WEEK ENDING: 6TH FEBRUARY, 1994

PERIODIC DETAINEES (P.D.'S)	People with warrants			Attending			No.*	Beds*
	Stage1	Stage2	Total	Stage1	Stage2	Total	Beds	+/-
Campbelltown	74	36	110	30	34	64	52	22
Emu Plains	43	22	65	26	21	47	66	40
Grafton	37	23	60	24	21	45	50	26
Malabar	133	40	173	87	38	125	164	77
Malabar Mid-week	49	33	82	40	32	72	164	124
Parramatta	42	16	58	28	16	44	33	5
St Heliers	26	29	55	16	28	44	25	9
Silverwater	104	57	161	56	55	111	110	54
Silverwater Mid-week	97	35	132	64	35	99	110	46
Tomago	91	33	124	63	33	96	96	33
Windsor	81	30	111	56	29	85	60	4
Administration**	6	0	6	0	0	0	0	0
Administration Midweek	0	0	0	0	0	0	0	0
Wollongong	48	6	54	29	6	35	82	53
Total Males	831	360	1191	519	348	867	1012	493

Merinda	44	28	72	25	26	51	52	27
Administration**	1	0	1	0	0	0	0	0
Total Females	45	28	73	25	26	51	52	27

TOTAL P.D.'S	876	388	1264	544	374	918	1064	520
---------------------	------------	------------	-------------	------------	------------	------------	-------------	------------

* Number of free beds calculated on the numbers attending in Stage 1 and assuming uncrowded conditions.
Amended 28th June, 1992.

** Administration Stage 1 comprises detainees who have failed to attend for more than 8 consecutive weeks.

** Administration Stage 2 comprises Stage 2 detainees not attached to any particular PDC.

The total number of people with warrants comprises:

Number attending		867	51	918
Number in full-time custody	sentenced—one month or less	2 M +	1 F =	3
	sentenced—more than one month	13 M +	0 F =	13
	remand	5 M +	0 F =	5
Number on appeal with bail		17 M +	3 F =	20
Number absent — leave applied for	— sick	78 M +	8 F =	86
	— other	12 M +	1 F =	13
Total absent — reasons known		127 M +	13 F =	140
Number absent without leave	— no reason given	66 M +	5 F =	71
	— legal action pending	131 M +	4 F =	135
Total absent without leave		197 M +	9 F =	206
Total number of people with warrants		1191 M +	73 F =	1264

WEEKLY STATES FOR THE WEEK ENDING: 6TH FEBRUARY, 1994

	Full-time Inmates		All Inmates Full-time + PD	
	No.	Date	No.	Date
Highest weekly state, year ending previous week	6526	24/10/93	7784	24/10/93
Lowest weekly state, year ending previous week	6021	24/1/93	7102	7/2/93
State for previous week	6255	30/1/94	7525	30/1/94
State for this week	6278	6/2/94	7542	6/2/94

WEEKLY STATES AT MIDNIGHT ON: 6TH MARCH, 1994

FULL-TIME INMATES	INMATES					*Accommodation in				Beds +/- **	Segreg- ation		Protect- ion	
	Males		Females		Total	Single Cells	Multi Cells	Dorm	Total Beds		M	F	M	F
	U/S	S	U/S	S										
Goulburn (Main)	67	314	-	-	381	314	55	-	369	-12	10	-	261	-
Maitland	56	128	-	-	184	51	76	-	127	-57	3	-	41	-
Long Bay Complex														
- Special Purpose Centre	14	31	1	2	48	60	-	-	60	12	-	-	-	-
M - L. B. Hospital - Med.	4	22	-	1	27	16	12	-	28	1	-	-	-	-
A - L. B. Hospital - Psych.	26	52	-	1	79	84	-	-	84	5	-	-	-	-
X - Prince Henry Annexe	2	6	-	-	8	-	-	7	7	-1	-	-	-	-
I - Reception & Industrial	80	353	-	-	433	410	2	-	412	-21	7	-	51	-
M - Special Care C. C.														
U - Special Care Unit	-	22	-	-	22	27	-	-	27	5	-	-	-	-
M - Crisis Support Unit	2	4	-	2	8	-	18	-	18	10	-	-	-	-
- Lifestyles Unit	2	3	-	-	5	-	8	-	8	3	-	-	-	-
- Remand Centre	323	19	-	-	342	216	2	8	226	-116	-	-	63	-
Lithgow	63	198	-	-	261	298	-	-	298	37	3	-	32	-
Sub-total	639	1152	1	6	1798	1476	173	15	1664	-134	23	0	448	0
Bathurst (Main)	50	158	-	-	208	220	4	-	224	16	3	-	6	-
M Broken Hill	10	28	-	1	39	14	14	-	28	-11	-	-	-	-
E Cooma	17	138	-	-	155	112	-	8	120	-35	-	-	-	-
D Grafton (Main)	37	75	-	3	115	42	-	12	54	-61	1	-	10	-
I Mulawa	-	-	82	126	208	162	52	8	222	14	-	4	-	11
U Parramatta	261	190	-	-	451	292	-	-	292	-159	4	-	-	-
M Parklea N.W.R.	24	211	-	-	243	313	-	-	313	70	-	-	-	-
- Work Release	-	8	-	-										
Junee (Medium)	49	343	-	-	392	368	16	-	384	-8	-	-	1	-
Tamworth	15	43	-	-	58	-	66	-	66	8	1	-	3	-
Sub-total	463	1194	82	130	1869	1523	152	28	1703	-166	9	4	20	11
Berrima	4	53	-	-	57	57	4	-	61	4	-	-	-	-
Emu Plains	5	134	-	-	139	116	2	-	118	-21	-	-	-	-
Norma Parker N.W.R.	-	-	7	48	72	16	46	28	90	18	-	-	-	-
- Work Release	-	-	-	17										
M Silverwater N.W.R.	9	189	-	-	322	45	408	-	453	131	-	-	-	-
I - Work Release	4	120	-	-										
N Goulburn (X-Wing)	4	109	-	-	113	90	-	-	90	-23	-	-	-	-
I Bathurst (X-Wing)	14	98	-	-	112	89	-	-	89	-23	-	-	-	-
M Grafton (C-Unit)	6	107	-	-	113	96	-	-	96	-17	-	-	-	-
U Training Centre (Long Bay)	10	277	-	-	287	211	-	-	211	-76	-	-	-	-
M St Heliers	-	193	-	-	193	184	-	5	189	-4	-	-	-	-
Glen Innes	-	131	-	-	131	154	-	-	154	23	-	-	-	-
Mannus	6	122	-	-	128	81	48	12	141	13	-	-	-	-
Oberon	6	63	-	-	69	80	-	-	80	11	-	-	-	-
Kirkconnell	9	189	-	-	198	70	60	-	130	-68	-	-	-	-
Junee (Minimum)	12	177	-	-	189	228	-	-	228	39	-	-	-	-
John Morony	34	172	-	-	206	232	18	-	250	44	-	-	-	-
Cessnock	49	371	-	-	420	407	50	-	457	37	-	-	2	-
Sub-total	172	2505	7	65	2749	2156	636	45	2837	88	0	0	2	0
TOTAL FULL-TIME	1274	4851	90	201	6416	5155	961	88	6204	-212	32	4	470	11

* Design accommodation in uncrowded conditions - amended 12th September, 1993. N.W.R.=Non Work Release

**Difference between number of beds in uncrowded conditions and number of inmates.

S=Sentenced inmates (not including appellants) U/S=Unsentenced inmates (including appellants, trials, remandees and deportees)

Included in the above figures are:

Number of fine defaulters (in gaol for no other reason)	82 M +	13 F =	95	(including 0 at Junee)
Number of inmates on appeal	518 M +	48 F =	566	(including 61 at Junee)
Number of inmates on remand or for trial	754 M +	42 F =	796	(including 0 at Junee)
Number of juveniles under 18 years	0 M +	0 F =	0	(including 0 at Junee)
Total full-time inmates =	5835 (at DOCS institutions) +	581 (at Junee) =	6416	

WEEKLY STATES FOR THE WEEK ENDING: 6TH MARCH, 1994

PERIODIC DETAINEES (P.D.'S)	People with warrants			Attending			No.* Beds	Beds* +/-
	Stage1	Stage2	Total	Stage1	Stage2	Total		
Campbelltown	74	28	102	31	27	58	52	21
Emu Plains	48	21	69	30	19	49	66	36
Grafton	36	26	62	26	25	51	50	24
Malabar	114	43	157	68	43	111	164	96
Malabar Mid-week	44	36	80	33	35	68	164	131
Parramatta	40	17	57	28	16	44	33	5
St Heliers	30	23	53	18	23	41	25	7
Silverwater	116	58	174	71	57	128	110	39
Silverwater Mid-week	77	44	121	44	43	87	110	66
Tomago	87	35	122	50	35	85	96	46
Windsor	85	26	111	60	25	85	60	0
Administration**	5	-	5	-	-	0	0	0
Administration Midweek	-	-	0	-	-	0	0	0
Wollongong	52	7	59	41	7	48	82	41
Total Males	808	364	1172	500	355	855	1012	512

Merinda	49	24	73	24	23	47	52	28
Administration**	1	-	1	-	-	0	0	0
Total Females	50	24	74	24	23	47	52	28

TOTAL P.D.'S	858	388	1246	524	378	902	1064	540
---------------------	------------	------------	-------------	------------	------------	------------	-------------	------------

* Number of free beds calculated on the numbers attending in Stage 1 and assuming uncrowded conditions.

Amended 28th June, 1992.

** Administration Stage 1 comprises detainees who have failed to attend for more than 8 consecutive weeks.

** Administration Stage 2 comprises Stage 2 detainees not attached to any particular PDC.

The total number of people with warrants comprises:

Number attending		855	47	902
Number in full-time custody				
sentenced—one month or less	1 M +	0 F =		1
sentenced—more than one month	12 M +	0 F =		12
remand	7 M +	0 F =		7
Number on appeal with bail	11 M +	3 F =		14
Number absent — leave applied for				
— sick	75 M +	7 F =		82
— other	11 M +	7 F =		18
Total absent — reasons known	117 M +	17 F =		134
Number absent without leave				
— no reason given	94 M +	1 F =		95
— legal action pending	106 M +	9 F =		115
Total absent without leave	200 M +	10 F =		210
Total number of people with warrants	1172 M +	74 F =		1246

WEEKLY STATES FOR THE WEEK ENDING: 6TH MARCH, 1994

	Full-time Inmates		All Inmates Full-time + PD	
	No.	Date	No.	Date
Highest weekly state, year ending previous week	6526	24/10/93	7784	24/10/93
Lowest weekly state, year ending previous week	6090	28/2/93	7176	28/2/93
State for previous week	6393	27/2/94	7657	27/2/94
State for this week	6416	6/3/94	7662	6/3/94

WEEKLY STATES AT MIDNIGHT ON: 3RD APRIL, 1994

FULL-TIME INMATES		INMATES				*Accommodation in				Beds +/- **	Segregation		Protection		
		Males		Females		Total	Single Cells	Multi Cells	Dorm		Total Beds	M	F	M	F
		U/S	S	U/S	S										
	Goulburn (Main)	70	315	-	-	385	314	55	-	369	-16	4	-	269	-
	Maitland	55	116	-	-	171	51	76	-	127	-44	1	-	43	-
	Long Bay Complex														
	- Special Purpose Centre	15	32	-	3	50	60	-	-	60	10	-	-	-	-
M	- L. B. Hospital - Med.	10	16	-	1	27	16	12	-	28	1	-	-	-	-
A	- L. B. Hospital - Psych.	32	38	-	-	70	84	-	-	84	14	-	-	-	-
X	- Prince Henry Annexe	2	3	-	-	5	-	-	7	7	2	-	-	-	-
I	- Reception & Industrial	95	356	-	-	451	410	2	-	412	-39	10	-	44	-
M	- Special Care C. C.														
U	- Special Care Unit	1	19	-	-	20	27	-	-	27	7	-	-	-	-
M	- Crisis Support Unit	3	8	1	1	13	-	18	-	18	5	-	-	-	-
	- Lifestyles Unit	1	2	-	-	3	-	8	-	8	5	-	-	-	-
	- Remand Centre	338	20	-	-	358	216	2	8	226	-132	-	-	67	-
	Lithgow	56	216	-	-	272	298	-	-	298	26	2	-	33	-
	Sub-total	678	1141	1	5	1825	1476	173	15	1664	-161	17	0	456	0
	Bathurst (Main)	61	145	-	-	206	220	4	-	224	18	-	-	8	-
M	Broken Hill	9	31	-	1	41	14	14	-	28	-13	-	-	-	-
E	Cooma	18	133	-	-	151	112	-	8	120	-31	-	-	-	-
D	Grafton (Main)	32	91	-	6	129	42	-	12	54	-75	-	-	9	-
I	Mulawa	-	-	86	145	231	162	52	8	222	-9	-	3	-	9
U	Parramatta	241	207	-	-	448	292	-	-	292	-156	4	-	-	-
M	Parklea N.W.R.	20	233	-	-	260	313	-	-	313	53	-	-	-	-
	- Work Release	-	7	-	-	-	-	-	-	-	-	-	-	-	-
	Junee (Medium)	37	326	-	-	363	368	16	-	384	21	3	-	-	-
	Tamworth	18	38	-	-	56	-	66	-	66	10	-	-	-	-
	Sub-total	436	1211	86	152	1885	1523	152	28	1703	-182	7	3	17	9
	Berrima	6	51	-	-	57	57	4	-	61	4	-	-	-	-
	Emu Plains	4	131	-	-	135	116	2	-	118	-17	-	-	-	-
	Norma Parker N.W.R.	-	-	6	45	67	16	46	28	90	23	-	-	-	-
	- Work Release	-	-	1	15	-	-	-	-	-	-	-	-	-	-
M	Silverwater N.W.R.	9	176	-	-	300	45	408	-	453	153	-	-	2	-
I	- Work Release	1	114	-	-	-	-	-	-	-	-	-	-	-	-
N	Goulburn (X-Wing)	2	106	-	-	108	90	-	-	90	-18	-	-	-	-
I	Bathurst (X-Wing)	12	97	-	-	109	89	-	-	89	-20	-	-	-	-
M	Grafton (C-Unit)	5	108	-	-	113	96	-	-	96	-17	-	-	-	-
U	Training Centre (Long Bay)	1	272	-	-	273	211	-	-	211	-62	-	-	-	-
M	St Heliers	-	231	-	-	231	184	-	5	189	-42	-	-	-	-
	Glen Innes	-	139	-	-	139	154	-	-	154	15	-	-	-	-
	Mannus	5	114	-	-	119	81	48	12	141	22	-	-	-	-
	Oberon	8	68	-	-	76	80	-	-	80	4	-	-	-	-
	Kirkconnell	13	169	-	-	182	70	60	-	130	-52	-	-	-	-
	Junee (Minimum)	18	201	-	-	219	228	-	-	228	9	2	-	-	-
	John Morony	31	183	-	-	214	232	18	-	250	36	-	-	-	-
	Cessnock	54	382	-	-	436	407	50	-	457	21	3	-	1	-
	Sub-total	169	2542	7	60	2778	2156	636	45	2837	59	5	0	3	0
	TOTAL FULL-TIME	1283	4894	94	217	6488	5155	961	88	6204	-284	29	3	476	9

* Design accommodation in uncrowded conditions - amended 12th September, 1993. N.W.R. = Non Work Release

** Difference between number of beds in uncrowded conditions and number of inmates.

S = Sentenced inmates (not including appellants) U/S = Unsented inmates (including appellants, trials, remandees and deportees)

Included in the above figures are:

Number of fine defaulters (in gaol for no other reason)	51 M +	7 F =	58	(including 0 at Junee)
Number of inmates on appeal	500 M +	49 F =	549	(including 55 at Junee)
Number of inmates on remand or for trial	775 M +	45 F =	820	(including 0 at Junee)
Number of juveniles under 18 years	0 M +	0 F =	0	(including 0 at Junee)
Total full-time inmates =	5906 (at DOCS institutions)	+ 582 (at Junee)	=	6488

WEEKLY STATES FOR THE WEEK ENDING: 3RD APRIL, 1994

PERIODIC DETAINEES (P.D.'S)	People with warrants			Attending			No.* Beds	Beds* +/-
	Stage1	Stage2	Total	Stage1	Stage2	Total		
Campbelltown			0			0	52	52
Emu Plains			0			0	66	66
Grafton			0			0	50	50
Malabar			0			0	164	164
Malabar Mid-week			0			0	164	164
Parramatta			0			0	33	33
St Heliers			0			0	25	25
Silverwater			0			0	110	110
Silverwater Mid-week			0			0	110	110
Tomago			0			0	96	96
Windsor			0			0	60	60
Administration**			0			0	0	0
Administration Midweek			0			0	0	0
Wollongong			0			0	82	82
Total Males	0	0	0	0	0	0	1012	1012

Merinda	0	0	0			0	52	52
Administration**	0	0	0			0	0	0
Total Females	0	0	0	0	0	0	52	52

#TOTAL P.D.'S	0	0	0	0	0	0	1064	1064
----------------------	----------	----------	----------	----------	----------	----------	-------------	-------------

* Number of free beds calculated on the numbers attending in Stage 1 and assuming uncrowded conditions.

Amended 28th June, 1992.

** Administration Stage 1 comprises detainees who have failed to attend for more than 8 consecutive weeks.

** Administration Stage 2 comprises Stage 2 detainees not attached to any particular PDC.

All Periodic Detention Centres were closed over Easter.

WEEKLY STATES FOR THE WEEK ENDING: 3RD APRIL, 1994

	Full-time Inmates		All Inmates Full-time + PD	
	No.	Date	No.	Date
Highest weekly state, year ending previous week	6526	24/10/93	7784	24/10/93
Lowest weekly state, year ending previous week	6205	2/5/93	7327	28/3/93
State for previous week	6407	27/3/94	7677	27/3/94
State for this week	6488	3/4/94	N/A#	3/4/94

***** Research & Statistics *****

WEEKLY STATES AT MIDNIGHT ON: 1ST MAY, 1994

FULL-TIME INMATES		INMATES				*Accommodation in				Beds +/- **	Segregation		Protection		
		Males		Females		Total	Single Cells	Multi Cells	Dorm		Total Beds	M	F	M	F
		U/S	S	U/S	S										
M A X I M U M	Goulburn (Main)	64	296	-	-	360	314	55	-	369	9	6	-	219	-
	Maitland	54	108	-	-	162	51	76	-	127	-35	3	-	40	-
	Long Bay Complex														
	- Special Purpose Centre	15	36	1	2	54	60	-	-	60	6	-	-	-	-
	- L. B. Hospital - Med.	7	16	-	-	23	16	12	-	28	5	-	-	-	-
	- L. B. Hospital - Psych.	28	46	-	-	74	84	-	-	84	10	-	-	-	-
	- Prince Henry Annexe	1	7	-	-	8	-	-	7	7	-1	-	-	-	-
	- Reception & Industrial	74	326	-	-	400	410	2	-	412	12	10	-	44	-
	- Special Care C. C.														
	- Special Care Unit	2	18	-	-	20	27	-	-	27	7	-	-	-	-
	- Crisis Support Unit	3	5	1	1	10	-	18	-	18	8	-	-	-	-
- Lifestyles Unit	2	2	-	-	4	-	8	-	8	4	-	-	-	-	
- Remand Centre	326	18	-	-	344	216	2	8	226	-118	-	-	61	-	
Lithgow	61	215	-	-	276	298	-	-	298	22	10	-	34	-	
Sub-total		637	1093	2	3	1735	1476	173	15	1664	-71	29	0	398	0
M E D I U M	Bathurst (Main)	52	156	-	-	208	220	4	-	224	16	1	-	7	-
	Broken Hill	9	33	-	1	43	14	14	-	28	-15	2	-	1	-
	Cooma	18	138	-	-	156	112	-	8	120	-36	-	-	-	-
	Grafton (Main)	42	87	-	1	130	42	-	12	54	-76	1	-	9	-
	Mulawa	-	-	77	138	215	162	52	8	222	7	-	4	-	6
	Parramatta	227	193	-	-	420	292	-	-	292	-128	4	-	-	-
	Parklea N.W.R.	22	234	-	-	262	313	-	-	313	51	-	-	2	-
	- Work Release	-	6	-	-	-	-	-	-	-	-	-	-	-	-
	Junee (Medium)	48	318	-	-	366	368	16	-	384	18	-	-	-	-
	Tamworth	11	34	-	-	45	-	66	-	66	21	1	-	-	-
Sub-total		429	1199	77	140	1845	1523	152	28	1703	-142	9	4	19	6
M I N U M	Berrima	8	54	-	-	62	57	4	-	61	-1	-	-	-	-
	Emu Plains	5	130	-	-	135	116	2	-	118	-17	-	-	-	-
	Norma Parker N.W.R.	-	-	10	50	73	16	46	28	90	17	-	-	-	-
	- Work Release	-	-	1	12	-	-	-	-	-	-	-	-	-	-
	Silverwater N.W.R.	12	200	-	-	316	45	408	-	453	137	-	-	-	-
	- Work Release	-	104	-	-	-	-	-	-	-	-	-	-	-	-
	Goulburn (X-Wing)	3	104	-	-	107	90	-	-	90	-17	-	-	-	-
	Bathurst (X-Wing)	11	97	-	-	108	89	-	-	89	-19	-	-	-	-
	Grafton (C-Unit)	3	107	-	-	110	96	-	-	96	-14	-	-	-	-
	Training Centre (Long Bay)	1	280	-	-	281	211	-	-	211	-70	-	-	-	-
	St Heliers	-	224	-	-	224	184	-	5	189	-35	-	-	-	-
	Glen Innes	-	141	-	-	141	154	-	-	154	13	-	-	-	-
	Mannus	3	132	-	-	135	81	48	12	141	6	-	-	-	-
	Oberon	8	80	-	-	88	80	-	-	80	-8	-	-	-	-
	Kirkconnell	15	182	-	-	197	70	60	-	130	-67	-	-	-	-
Junee (Minimum)	15	191	-	-	206	228	-	-	228	22	1	-	-	-	
John Morony	30	175	-	-	205	232	18	-	250	45	-	-	-	-	
Cessnock	59	370	-	-	429	407	50	-	457	28	1	-	-	-	
Sub-total		173	2571	11	62	2817	2156	636	45	2837	20	2	0	0	0
TOTAL FULL-TIME		1239	4863	90	205	6397	5155	961	88	6204	-193	40	4	417	6

* Design accommodation in uncrowded conditions - amended 12th September, 1993. N.W.R. = Non Work Release

**Difference between number of beds in uncrowded conditions and number of inmates.

S=Sentenced inmates (not including appellants) U/S=Unsentenced inmates (including appellants, trials, remandees and deportees)

Included in the above figures are:

Number of fine defaulters (in gaol for no other reason)	1 M +	2 F =	3	(including 0 at Junee)
Number of inmates on appeal	503 M +	47 F =	550	(including 63 at Junee)
Number of inmates on remand or for trial	732 M +	43 F =	775	(including 0 at Junee)
Number of juveniles under 18 years	0 M +	0 F =	0	(including 0 at Junee)
Total full-time inmates =	5825 (at DOCS institutions) +	572 (at Junee) =	6397	

WEEKLY STATES FOR THE WEEK ENDING: 1ST MAY, 1994

PERIODIC DETAINEES (P.D.'S)	People with warrants			Attending			No.*	Beds*
	Stage1	Stage2	Total	Stage1	Stage2	Total	Beds	+/-
Campbelltown	76	24	100	31	23	54	52	21
Emu Plains	52	18	70	35	18	53	66	31
Grafton	43	34	77	34	32	66	50	16
Malabar	116	45	161	79	45	124	164	85
Malabar Mid-week	48	33	81	33	32	65	164	131
Parramatta	42	13	55	24	11	35	33	9
St Heliers	21	22	43	14	22	36	25	11
Silverwater	138	54	192	93	51	144	110	17
Silverwater Mid-week	89	39	128	60	38	98	110	50
Tomago	102	28	130	64	28	92	96	32
Windsor	99	22	121	64	22	86	60	-4
Administration**	6	0	6	0	0	0	0	0
Administration Midweek	0	0	0	0	0	0	0	0
Wollongong	61	12	73	38	11	49	82	44
Total Males	893	344	1237	569	333	902	1012	443

Merinda	67	19	86	43	19	62	52	9
Administration**	0	0	0	0	0	0	0	0
Total Females	67	19	86	43	19	62	52	9

TOTAL P.D.'S	960	363	1323	612	352	964	1064	452
---------------------	------------	------------	-------------	------------	------------	------------	-------------	------------

* Number of free beds calculated on the numbers attending in Stage 1 and assuming uncrowded conditions.

Amended 28th June, 1992.

** Administration Stage 1 comprises detainees who have failed to attend for more than 8 consecutive weeks.

** Administration Stage 2 comprises Stage 2 detainees not attached to any particular PDC.

The total number of people with warrants comprises:

Number attending	902	62	964
Number in full-time custody			
sentenced - one month or less	1 M +	0 F =	1
sentenced - more than one month	11 M +	0 F =	11
remand	15 M +	2 F =	17
Number on appeal with bail	14 M +	1 F =	15
Number absent - leave applied for			
- sick	81 M +	7 F =	88
- other	13 M +	3 F =	16
Total absent - reasons known	135 M +	13 F =	148
Number absent without leave			
- no reason given	89 M +	3 F =	92
- legal action pending	111 M +	8 F =	119
Total absent without leave	200 M +	11 F =	211
Total number of people with warrants	1237 M +	86 F =	1323

WEEKLY STATES FOR THE WEEK ENDING: 1ST MAY, 1994

	Full-time Inmates		All Inmates Full-time + PD	
	No.	Date	No.	Date
Highest weekly state, year ending previous week	6526	24/10/93	7784	24/10/93
Lowest weekly state, year ending previous week	6205	2/5/93	7352	2/5/93
State for previous week	6409	24/4/94	7724	24/4/94
State for this week	6397	1/5/94	7720	1/5/94

WEEKLY STATES AT MIDNIGHT ON: 5TH JUNE, 1994

FULL-TIME INMATES	INMATES				Total	*Accommodation in				Beds +/- **	Segregation		Protection	
	Males		Females			Single Cells	Multi Cells	Dorm	Total Beds		M	F	M	F
	U/S	S	U/S	S										
Goulburn (Main)	76	325	-	-	401	314	55	-	369	-32	4	-	261	-
Maitland	70	110	-	-	180	51	76	-	127	-53	2	-	42	-
Long Bay Complex														
- Special Purpose Centre	14	37	1	2	54	60	-	-	60	6	-	-	-	-
M - L. B. Hospital - Med.	2	23	-	-	25	16	12	-	28	3	-	-	-	-
A - L. B. Hospital - Psych.	26	56	-	-	82	84	-	-	84	2	-	-	-	-
X - Prince Henry Annexe	2	4	-	-	6	-	-	7	7	1	-	-	-	-
I - Reception & Industrial	65	345	-	-	410	410	2	-	412	2	10	-	60	-
M - Special Care C. C.														
U - Special Care Unit	3	18	-	-	21	27	-	-	27	6	-	-	-	-
M - Crisis Support Unit	5	4	1	1	11	-	18	-	18	7	-	-	-	-
- Lifestyles Unit	-	5	-	-	5	-	8	-	8	3	-	-	-	-
- Remand Centre	306	13	-	-	319	216	2	8	226	-93	-	-	58	-
Lithgow	59	205	-	-	264	298	-	-	298	34	6	-	28	-
Sub-total	628	1145	2	3	1778	1476	173	15	1664	-114	22	0	449	0
Bathurst (Main)	42	177	-	-	219	220	4	-	224	5	-	-	10	-
M Broken Hill	8	31	-	1	40	14	14	-	28	-12	-	-	-	-
E Cooma	19	139	-	-	158	112	-	8	120	-38	-	-	-	-
D Grafton (Main)	27	84	-	1	112	42	-	12	54	-58	1	-	7	-
I Mulawa	-	-	78	147	225	162	52	8	222	-3	-	2	-	8
U Parramatta	240	187	-	-	427	292	-	-	292	-135	2	-	-	-
M Parklea N.W.R.	22	231	-	-	268	405	-	-	405	137	-	-	2	-
- Work Release	-	15	-	-	-	-	-	-	-	-	-	-	-	-
Junee (Medium)	49	285	-	-	334	368	16	-	384	50	2	-	-	-
Tamworth	5	49	-	-	54	-	66	-	66	12	5	-	5	-
Sub-total	412	1198	78	149	1837	1615	152	28	1795	-42	10	2	24	8
Berrima	8	55	-	-	63	57	4	-	61	-2	-	-	-	-
Emu Plains	6	131	-	-	137	116	2	-	118	-19	-	-	-	-
Norma Parker N.W.R.	-	-	15	41	73	16	46	28	90	17	-	-	-	-
- Work Release	-	-	-	17	-	-	-	-	-	-	-	-	-	-
M Silverwater N.W.R.	23	203	-	-	325	45	408	-	453	128	-	-	-	-
I - Work Release	2	97	-	-	-	-	-	-	-	-	-	-	-	-
N Goulburn (X-Wing)	1	109	-	-	110	90	-	-	90	-20	-	-	-	-
I Bathurst (X-Wing)	2	117	-	-	119	89	-	-	89	-30	-	-	-	-
M Grafton (C-Unit)	8	100	-	-	108	96	-	-	96	-12	-	-	-	-
U Training Centre (Long Bay)	7	281	-	-	288	211	-	-	211	-77	-	-	-	-
M St Heliers	16	216	-	-	232	184	-	5	189	-43	-	-	-	-
Glen Innes	-	132	-	-	132	154	-	-	154	22	-	-	-	-
Mannus	3	134	-	-	137	81	48	12	141	4	-	-	-	-
Oberon	5	91	-	-	96	80	-	-	80	-16	-	-	-	-
Kirkconnell	8	180	-	-	188	70	60	-	130	-58	-	-	-	-
Junee (Minimum)	16	183	-	-	199	228	-	-	228	29	1	-	-	-
John Morony	30	173	-	-	203	232	18	-	250	47	1	-	1	-
Cessnock	49	388	-	-	437	407	50	-	457	20	1	-	2	-
Sub-total	184	2590	15	58	2847	2156	636	45	2837	-10	3	0	3	0
TOTAL FULL-TIME	1224	4933	95	210	6462	5247	961	88	6296	-166	35	2	476	8

* Design accommodation in uncrowded conditions - amended 15th May, 1994.

N.W.R.=Non Work Release

**Difference between number of beds in uncrowded conditions and number of inmates.

S=Sentenced inmates (not including appellants) U/S=Unsentenced inmates (including appellants, trials, remandees and deportees)

Included in the above figures are:

Number of fine defaulters (in gaol for no other reason)	2 M +	1 F =	3	(including 0 at Junee)
Number of inmates on appeal	509 M +	49 F =	558	(including 65 at Junee)
Number of inmates on remand or for trial	711 M +	46 F =	757	(including 0 at Junee)
Number of juveniles under 18 years	1 M +	0 F =	1	(including 0 at Junee)
Total full-time inmates =	5929 (at DOCS institutions)	+	533 (at Junee)	= 6462

WEEKLY STATES FOR THE WEEK ENDING: 5TH JUNE, 1994

PERIODIC DETAINEES (P.D.'S)	People with warrants			Attending			No.* Beds	Beds* +/-
	Stage1	Stage2	Total	Stage1	Stage2	Total		
Campbelltown	68	21	89	30	20	50	52	22
Emu Plains	45	17	62	26	17	43	66	40
Grafton	43	33	76	35	30	65	50	15
Malabar	125	43	168	87	42	129	164	77
Malabar Mid-week	44	31	75	28	30	58	164	136
Parramatta	44	13	57	23	13	36	33	10
St Heliers	38	18	56	31	18	49	25	-6
Silverwater	127	58	185	81	54	135	110	29
Silverwater Mid-week	90	42	132	61	39	100	110	49
Tomago	102	31	133	59	31	90	96	37
Windsor	91	29	120	62	29	91	60	-2
Administration**	4	0	4	0	0	0	0	0
Administration Midweek	1	0	1	0	0	0	0	0
Wollongong	75	14	89	46	13	59	82	36
Total Males	897	350	1247	569	336	905	1012	443

Merinda	67	20	87	44	20	64	52	8
Administration**	0	0	0	0	0	0	0	0
Total Females	67	20	87	44	20	64	52	8

TOTAL P.D.'S	964	370	1334	613	356	969	1064	451
---------------------	------------	------------	-------------	------------	------------	------------	-------------	------------

* Number of free beds calculated on the numbers attending in Stage 1 and assuming uncrowded conditions.

Amended 28th June, 1992.

** Administration Stage 1 comprises detainees who have failed to attend for more than 8 consecutive weeks.

** Administration Stage 2 comprises Stage 2 detainees not attached to any particular PDC.

The total number of people with warrants comprises:

Number attending		905	64	969
Number in full-time custody	sentenced-one month or less	3 M +	0 F =	3
	sentenced-more than one month	9 M +	0 F =	9
	remand	17 M +	1 F =	18
Number on appeal with bail		14 M +	1 F =	15
Number absent - leave applied for	- sick	88 M +	8 F =	96
	- other	20 M +	2 F =	22
Total absent - reasons known		151 M +	12 F =	163
Number absent without leave	- no reason given	65 M +	3 F =	68
	- legal action pending	126 M +	8 F =	134
Total absent without leave		191 M +	11 F =	202
Total number of people with warrants		1247 M +	87 F =	1334

WEEKLY STATES FOR THE WEEK ENDING:

5TH JUNE, 1994

	Full-time Inmates		All Inmates Full-time + PD	
	No.	Date	No.	Date
Highest weekly state, year ending previous week	6526	24/10/93	7784	24/10/93
Lowest weekly state, year ending previous week	6255	30/1/94	7525	30/1/94
State for previous week	6438	29/5/94	7778	29/5/94
State for this week	6462	5/6/94	7796	5/6/94

WEEKLY STATES AT MIDNIGHT ON: 26TH JUNE, 1994

FULL-TIME INMATES		INMATES				*Accommodation in				Beds +/- **	Segregation		Protection		
		Males		Females		Total	Single Cells	Multi Cells	Dorm		Total Beds	M	F	M	F
		U/S	S	U/S	S										
	Goulburn (Main)	72	309	-	-	381	314	55	-	369	-12	5	-	239	-
	Maitland	60	107	-	-	167	51	76	-	127	-40	1	-	42	-
	Long Bay Complex														
	- Special Purpose Centre	14	39	1	2	56	60	-	-	60	4	-	-	-	-
M	- L. B. Hospital - Med.	10	20	-	-	30	16	12	-	28	-2	-	-	-	-
A	- L. B. Hospital - Psych.	29	56	-	1	86	84	-	-	84	-2	-	-	-	-
X	- Prince Henry Annexe	-	2	-	-	2	-	-	7	7	5	-	-	-	-
I	- Reception & Industrial	86	324	-	-	410	410	2	-	412	2	11	-	48	-
M	- Special Care C. C.														
U	- Special Care Unit	3	15	-	-	18	27	-	-	27	9	-	-	-	-
M	- Crisis Support Unit	4	7	1	1	13	-	18	-	18	5	-	-	-	-
	- Lifestyles Unit	-	7	-	-	7	-	8	-	8	1	-	-	-	-
	- Remand Centre	313	14	-	-	327	216	2	8	226	-101	-	-	59	-
	Lithgow	54	206	-	-	260	298	-	-	298	38	6	-	30	-
	Sub-total	645	1106	2	4	1757	1476	173	15	1664	-93	23	0	418	0
	Bathurst (Main)	54	164	-	-	218	220	4	-	224	6	1	-	3	-
M	Broken Hill	8	30	-	1	39	14	14	-	28	-11	-	-	-	-
E	Cooma	19	141	-	-	160	112	-	8	120	-40	-	-	-	-
D	Grafton (Main)	41	72	4	1	118	42	-	12	54	-64	-	-	10	-
I	Mulawa	-	-	80	139	219	162	52	8	222	3	-	1	-	9
U	Parramatta	224	193	-	-	417	292	-	-	292	-125	1	-	-	-
M	Parklea N.W.R.	26	242	-	-	281	405	-	-	405	124	1	-	2	-
	- Work Release	-	13	-	-										
	Junee (Medium)	45	277	-	-	322	368	16	-	384	62	2	-	-	-
	Tamworth	9	43	-	-	52	-	66	-	66	14	-	-	5	-
	Sub-total	426	1175	84	141	1826	1615	152	28	1795	-31	5	1	20	9
	Berrima	7	56	-	-	63	57	4	-	61	-2	-	-	-	-
	Emu Plains	7	124	-	-	131	116	2	-	118	-13	-	-	-	-
	Norma Parker N.W.R.	-	-	15	47	80	16	46	28	90	10	-	-	-	-
	- Work Release	-	-	1	17										
M	Silverwater N.W.R.	23	206	-	-	328	45	408	-	453	125	-	-	-	-
I	- Work Release	-	99	-	-										
N	Goulburn (X-Wing)	1	106	-	-	107	90	-	-	90	-17	-	-	-	-
I	Bathurst (X-Wing)	5	102	-	-	107	89	-	-	89	-18	-	-	-	-
M	Grafton (C-Unit)	8	111	-	-	119	96	-	-	96	-23	-	-	-	-
U	Training Centre (Long Bay)	7	278	-	-	285	211	-	-	211	-74	-	-	-	-
M	St Heliers	-	217	-	-	217	184	-	5	189	-28	-	-	-	-
	Glen Innes	-	127	-	-	127	154	-	-	154	27	-	-	-	-
	Mannus	4	138	-	-	142	81	48	12	141	-1	-	-	-	-
	Oberon	3	93	-	-	96	80	-	-	80	-16	-	-	-	-
	Kirkconnell	9	180	-	-	189	70	60	-	130	-59	-	-	-	-
	Junee (Minimum)	17	213	-	-	230	228	-	-	228	-2	-	-	-	-
	John Morony	17	165	-	-	182	232	18	-	250	68	-	-	-	-
	Cessnock	47	376	-	-	423	407	50	-	457	34	-	-	2	-
	Sub-total	155	2591	16	64	2826	2156	636	45	2837	11	0	0	2	0
	TOTAL FULL-TIME	1226	4872	102	209	6409	5247	961	88	6296	-113	28	1	440	9

* Design accommodation in uncrowded conditions - amended 15th May, 1994.

N.W.R.=Non Work Release

**Difference between number of beds in uncrowded conditions and number of inmates.

S=Sentenced inmates (not including appellants) U/S=Unsentenced inmates (including appellants, trials, remandees and deportees)

Included in the above figures are:

Number of fine defaulters (in gaol for no other reason) 4 M + 2 F = 6 (including 0 at Junee)

Number of inmates on appeal 512 M + 57 F = 569 (including 62 at Junee)

Number of inmates on remand or for trial 713 M + 45 F = 758 (including 0 at Junee)

Number of juveniles under 18 years 1 M + 0 F = 1 (including 0 at Junee)

Total full-time inmates = 5857 (at DOCS institutions) + 552 (at Junee) = 6409

WEEKLY STATES FOR THE WEEK ENDING: 26TH JUNE, 1994

PERIODIC DETAINEES (P.D.'S)	People with warrants			Attending			No.*	Beds*
	Stage1	Stage2	Total	Stage1	Stage2	Total	Beds	+/-
Campbelltown	74	22	96	35	22	57	52	17
Emu Plains	46	20	66	24	20	44	66	42
Grafton	47	32	79	37	31	68	50	13
Malabar	126	38	164	82	37	119	164	82
Malabar Mid-week	58	29	87	40	28	68	164	124
Parramatta	38	13	51	20	12	32	33	13
St Heliers	20	19	39	14	19	33	25	11
Silverwater	129	57	186	75	55	130	110	35
Silverwater Mid-week	102	43	145	59	39	98	110	51
Tomago	119	30	149	71	30	101	96	25
Windsor	85	24	109	51	24	75	60	9
Administration**	4	0	4	0	0	0	0	0
Administration Midweek	1	0	1	0	0	0	0	0
Wollongong	66	14	80	41	13	54	82	41
Total Males	915	341	1256	549	330	879	1012	463

Merinda	68	20	88	44	19	63	52	8
Administration**	0	0	0	0	0	0	0	0
Total Females	68	20	88	44	19	63	52	8

TOTAL P.D.'S	983	361	1344	593	349	942	1064	471
---------------------	------------	------------	-------------	------------	------------	------------	-------------	------------

* Number of free beds calculated on the numbers attending in Stage 1 and assuming uncrowded conditions.

Amended 28th June, 1992.

** Administration Stage 1 comprises detainees who have failed to attend for more than 8 consecutive weeks.

** Administration Stage 2 comprises Stage 2 detainees not attached to any particular PDC.

The total number of people with warrants comprises:

Number attending		879	63	942
Number in full-time custody	sentenced-one month or less	1 M +	0 F =	1
	sentenced-more than one month	17 M +	0 F =	17
	remand	13 M +	0 F =	13
Number on appeal with bail		10 M +	0 F =	10
Number absent - leave applied for	- sick	108 M +	8 F =	116
	- other	20 M +	2 F =	22
Total absent - reasons known		169 M +	10 F =	179
Number absent without leave	- no reason given	78 M +	6 F =	84
	- legal action pending	130 M +	9 F =	139
Total absent without leave		208 M +	15 F =	223
Total number of people with warrants		1256 M +	88 F =	1344

WEEKLY STATES FOR THE WEEK ENDING: 26TH JUNE, 1994

	Full-time Inmates		All Inmates Full-time + PD	
	No.	Date	No.	Date
Highest weekly state, year ending previous week	6526	24/10/93	7796	5/6/94
Lowest weekly state, year ending previous week	6255	30/1/94	7525	30/1/94
State for previous week	6387	19/6/94	7728	19/6/94
State for this week	6409	26/6/94	7753	26/6/94