



South Coast Correctional Centre Upgrade

Sketch Design Submission for Hydraulic Services

Project Reference No: #115577

July 2016

Prepared For:

Guymer Bailey Architects
1/1025 High Street
Armadale VIC 3143

Meinhardt

Level 4, 66 Clarence Street
Sydney NSW, 2000

P. 02 9699 3088 | F.02 9319 7508
www.meinhardtgroup.com

Copyright

© Meinhardt

This document is subject to copyright. Use or copying of this document in whole or part without the written permission of Meinhardt constitutes an infringement of copyright.

Disclaimer

Information in this document is current at the time of writing. While all professional care has been undertaken in preparing the document, Meinhardt accepts no liability for loss or damages incurred as a result of reliance placed upon its content.

The mention of any company, product or process in this report does not constitute or imply endorsement by Meinhardt.

REV	DATE	WRITTEN BY	REVIEWED BY	APPROVED BY
A	20/5/16	MB	TN	BP
B	22/7/16	AS	MP	BP

TABLE OF CONTENTS

TABLE OF CONTENTS	3
1 Hydraulic Design Philosophy	7
1.1 General	7
2 Building Specific Hydraulic Design – Stage 1	7
2.1 Management Hydraulic Design – Building G1	7
2.1.1 Cold water.....	7
2.1.2 Hot water	7
2.1.3 Reuse water.....	7
2.1.4 Natural gas	7
2.1.5 Sanitary drainage.....	7
2.1.6 Gutters and Down pipes	7
2.2 Industries Hydraulic Design – Building H1	7
2.2.1 Cold water.....	7
2.2.2 Hot water	8
2.2.3 Reuse water.....	8
2.2.4 Natural gas	8
2.2.5 Sanitary drainage.....	8
2.2.6 Gutters and Down pipes	8
2.3 AVL Hydraulic – Building I	8
2.3.1 Cold water.....	8
2.3.2 Hot water	8
2.3.3 Reuse water.....	8
2.3.4 Natural gas	8
2.3.5 Sanitary drainage.....	8
2.3.6 Gutters and Down pipes	8
2.4 Medium Security Accommodation Hydraulic Design – Buildings M1 to M4	8
2.4.1 Cold water.....	8
2.4.2 Hot water	9
2.4.3 Reuse water.....	9
2.4.4 Natural gas	9
2.4.5 Sanitary drainage.....	9
2.4.6 Gutters and Down pipes	9
2.5 Medium Security Programs Room Hydraulic Design – Buildings M+.....	9
2.5.1 Cold water.....	9
2.5.2 Hot water	9
2.5.3 Reuse water.....	9
2.5.4 Natural gas	9
2.5.5 Sanitary drainage.....	9
2.5.6 Gutters and Down pipes	9
2.6 Visits Expansion Hydraulic Design – Building N1	10
2.6.1 Cold water.....	10

2.6.2	Hot water	10
2.6.3	Reuse water.....	10
2.6.4	Natural gas	10
2.6.5	Sanitary drainage.....	10
2.6.6	Gutters and Down pipes	10
2.7	Reception Alterations Hydraulic Design – Building N2	10
2.7.1	Cold water.....	10
2.7.2	Hot water	10
2.7.3	Reuse water.....	10
2.7.4	Natural gas	10
2.7.5	Sanitary drainage.....	10
2.7.6	Gutters and Down pipes	10
2.8	Clinic Expansion Hydraulic Design – Building N3	11
2.8.1	Cold water.....	11
2.8.2	Hot water	11
2.8.3	Reuse water.....	11
2.8.4	Natural gas	11
2.8.5	Sanitary drainage.....	11
2.8.6	Gutters and Down pipes	11
2.9	Maximum Security Accommodation Hydraulic Design – Building Y.....	11
2.9.1	Cold water.....	11
2.9.2	Hot water	11
2.9.3	Reuse water.....	11
2.9.4	Natural gas	11
2.9.5	Sanitary drainage.....	11
2.9.6	Gutters and Down pipes	11
2.10	Satellite Clinic & Programs Security Hydraulic Design – Building Z.....	12
2.10.1	Cold water.....	12
2.10.2	Hot water	12
2.10.3	Reuse water.....	12
2.10.4	Natural gas	12
2.10.5	Sanitary drainage.....	12
2.10.6	Gutters and Down pipes	12
3	Building Specific Hydraulic Design – Stage 2	13
3.1	Minimum Security Entry & Visits Hydraulic Design – Building 01	13
3.1.1	Cold water.....	13
3.1.2	Hot water	13
3.1.3	Reuse water.....	13
3.1.4	Natural gas	13
3.1.5	Sanitary drainage.....	13
3.1.6	Gutters and Down pipes	13
3.2	Minimum Security Programs Hydraulic Design Building 02	13
3.2.1	Cold water.....	13
3.2.2	Hot water	13

3.2.3	Reuse water.....	13
3.2.4	Natural gas	13
3.2.5	Sanitary drainage.....	14
3.2.6	Gutters and Down pipes	14
3.3	Minimum Security Hydraulic Design – Building O5, O6, O7and O8.....	14
3.3.1	Cold water.....	14
3.3.2	Hot water	14
3.3.3	Reuse water.....	14
3.3.4	Natural gas	14
3.3.5	Sanitary drainage.....	14
3.3.6	Gutters and Down pipes	14
3.4	Carpark Hydraulic Design –	14
3.4.1	Cold water.....	14
3.4.2	Hot water	14
3.4.3	Reuse water.....	14
3.4.4	Natural gas	14
3.4.5	Sanitary drainage.....	14
3.4.6	Carpark drainage	14
3.5	Staff Amenities Hydraulic Design – Building R	15
3.5.1	Cold water.....	15
3.5.2	Hot water	15
3.5.3	Reuse water.....	15
3.5.4	Natural gas	15
3.5.5	Sanitary drainage.....	15
3.5.6	Gutters and Down pipes	15
3.6	Medium Security Accommodation Hydraulic Design – Buildings W1& W2.....	15
3.6.1	Cold water.....	15
3.6.2	Hot water	15
3.6.3	Reuse water.....	15
3.6.4	Natural gas	15
3.6.5	Sanitary drainage.....	15
3.6.6	Gutters and Down pipes	15
3.7	Medium Security Programs RoomHydraulic Design – Buildings W+	15
3.7.1	Cold water.....	15
3.7.2	Hot water	15
3.7.3	Reuse water.....	16
3.7.4	Natural gas	16
3.7.5	Sanitary drainage.....	16
3.7.6	Gutters and Down pipes	16
3.8	Recreation Security Programs Room Hydraulic Design – Buildings K1.....	16
3.8.1	Cold water.....	16
3.8.2	Hot water	16
3.8.3	Reuse water.....	16
3.8.4	Natural gas	16

3.8.5	Sanitary drainage.....	16
3.8.6	Gutters and Down pipes	16
4	Site Wide Mark-up.....	17

1 Hydraulic Design Philosophy

1.1 General

The exiting 600 bed facilities are connected to the authority water, gas and drainage infrastructure. The hydraulic services Infrastructure are adequate for the additional load require to the proposed development.

Maximum Security Facility (Building Y1, Y2)

We intend to use these existing connections located at south side of building C to supply the new 160 maximum security facility to the south, The roof gutters will collect rain water and transfer via down pipes to the new in-ground 60,000L rain water tank, The collected rain water will be used for all WCs for flushing .

Minimum Security Facility (Building O1, O2,O4,O5,O6,O7 and O8)

We intend to use these existing connections for Water, gas and drainage located on the east side of the proposed new 200 bed minimum security facility.

The roof gutters will collect rain water and transfer via down pipes to the new in-ground 100,000L rain water tank, the collected rain water will be used for all WCs for flushing.

2 Building Specific Hydraulic Design – Stage 1

2.1 Management Hydraulic Design – Building G1

2.1.1 Cold water

Cold water will be supplied from a connection to the existing 100mm located at the west side of the building. Isolation valves will be provided to allow periodic or emergency maintenance without disruption to the wider network. Water sup meter will be provided.

Cold water will be supplied to the fixtures fittings and localized Gas boost hot water units

2.1.2 Hot water

Hot water will be generated locally with pipe work reticulation in a flow and return system to reduce the lengths of dead legs and improve efficiency.

Tempered water will be provided by a centralized Thermostatic mixing valve set to 42 degree to all fixtures and fittings.

2.1.3 Reuse water.

Reuse water will be provided to all WCs for flushing from the exiting site collection tanks and pumping distribution system.

2.1.4 Natural gas

Natural gas will be supplied from a connection to the existing site wide reticulated infrastructure located at the west side of the building. Isolation valves will be provided to allow periodic or emergency maintenance without disruption to the wider network.

Natural gas will be supplied to the hot water generators only in a low pressure arrangement, gas regulator will be provided .

2.1.5 Sanitary drainage

The sanitary drainage system will connect to the 225mm existing sewer site wide reticulated network located at the west of the proposed building. Manholes and inspection openings will be strategically located to allow periodic or emergency maintenance of the system.

2.1.6 Gutters and Down pipes

The roof gutters will collect rain water and transfer via down pipes to the existing site wide rainwater reuse system.

2.2 Industries Hydraulic Design – Building H1

2.2.1 Cold water

Cold water will be supplied from a connection to the existing site wide reticulated infrastructure. Isolation valves will be provided to allow periodic or emergency maintenance without disruption to the wider network.

Cold water will be supplied to the fixtures fittings and localized hot water units

2.2.2 Hot water

Hot water will be generated locally with pipe work reticulation in a flow and return system to reduce the lengths of dead legs and improve efficiency.

Tempered water will be provided by a centralized Thermostatic mixing valve set to 42 degree to all fixtures and fittings.

2.2.3 Reuse water.

Reuse water will be provided to all WCs for flushing from the exiting site collection tanks and pumping distribution system.

2.2.4 Natural gas

Natural gas will be supplied from a connection to the existing site wide reticulated infrastructure. Isolation valves will be provided to allow periodic or emergency maintenance without disruption to the wider network.

Natural gas will be supplied to the hot water generators only in a low pressure arrangement

2.2.5 Sanitary drainage

The sanitary drainage system will connect to the existing site wide reticulated network. Manholes and inspection openings will be strategically located to allow periodic or emergency maintenance of the system.

2.2.6 Gutters and Down pipes

The roof gutters will collect rain water and transfer via down pipes to the existing site wide rainwater reuse system.

2.3 AVL Hydraulic – Building I

2.3.1 Cold water

Cold water will be supplied from a connection to the existing site wide reticulated infrastructure located at the north of the proposed building. Isolation valves will be provided to allow periodic or emergency maintenance without disruption to the wider network.

Cold water will be supplied to the fixtures fittings and localized hot water units

2.3.2 Hot water

Hot water will be generated locally with pipe work reticulation in a flow and return system to reduce the lengths of dead legs and improve efficiency.

Tempered water will be provided by a centralized Thermostatic mixing valve set to 42 degree to all fixtures and fittings

2.3.3 Reuse water.

Reuse water will be provided to all WCs for flushing from the exiting site collection tanks and pumping distribution system.

2.3.4 Natural gas

Natural gas will be supplied from a connection to the existing site wide reticulated infrastructure located at the north of the proposed building. Isolation valves will be provided to allow periodic or emergency maintenance without disruption to the wider network.

Natural gas will be supplied to the hot water generators only in a low pressure arrangement

2.3.5 Sanitary drainage

The sanitary drainage system will connect to the existing site wide reticulated network. Manholes and inspection openings will be strategically located to allow periodic or emergency maintenance of the system.

2.3.6 Gutters and Down pipes

The roof gutters will collect rain water and transfer via down pipes to the existing site wide rainwater reuse system.

2.4 Medium Security Accommodation Hydraulic Design – Buildings M1 to M4

2.4.1 Cold water

Cold water will be supplied from existing reticulation to the building. Isolation valves will be provided to allow periodic or emergency maintenance without disruption to the wider network.

Cold water will be supplied to the fixtures fittings and localized hot water units

2.4.2 Hot water

Hot water will be generated locally with pipe work reticulation in a flow and return system to reduce the lengths of dead legs and improve efficiency.

Tempered water will be provided by a Thermostatic mixing valve to all fixtures and fittings

2.4.3 Reuse water.

Reuse water will be provided to all WCs for flushing from the exiting site collection tanks and pumping distribution system.

2.4.4 Natural gas

Natural gas will be supplied from existing reticulation to the building. Isolation valves will be provided to allow periodic or emergency maintenance without disruption to the wider network.

Natural gas will be supplied to the hot water generators only in a low pressure arrangement

2.4.5 Sanitary drainage

The sanitary drainage system will connect to the existing site wide reticulated network. Manholes and inspection openings will be strategically located to allow periodic or emergency maintenance of the system.

2.4.6 Gutters and Down pipes

The roof gutters will collect rain water and transfer via down pipes to the existing site wide rainwater reuse system.

2.5 Medium Security Programs Room Hydraulic Design – Buildings M+

2.5.1 Cold water

Cold water will be supplied from existing reticulation to the building. Isolation valves will be provided to allow periodic or emergency maintenance without disruption to the wider network.

Cold water will be supplied to the fixtures fittings and localized hot water units

2.5.2 Hot water

Hot water will be generated locally with pipe work reticulation in a flow and return system to reduce the lengths of dead legs and improve efficiency.

Tempered water will be provided by a Thermostatic mixing valve to all fixtures and fittings

2.5.3 Reuse water.

Reuse water will be provided to all WCs for flushing from the exiting site collection tanks and pumping distribution system.

2.5.4 Natural gas

Natural gas will be supplied from existing reticulation to the building. Isolation valves will be provided to allow periodic or emergency maintenance without disruption to the wider network.

Natural gas will be supplied to the hot water generators only in a low pressure arrangement

2.5.5 Sanitary drainage

The sanitary drainage system will connect to the existing site wide reticulated network. Manholes and inspection openings will be strategically located to allow periodic or emergency maintenance of the system.

2.5.6 Gutters and Down pipes

The roof gutters will collect rain water and transfer via down pipes to the existing site wide rainwater reuse system.

2.6 Visits Expansion Hydraulic Design – Building N1

2.6.1 Cold water

Cold water will be supplied from a connection to the existing site wide reticulated infrastructure. Isolation valves will be provided to allow periodic or emergency maintenance without disruption to the wider network. Cold water will be supplied to the fixtures fittings and localized hot water units

2.6.2 Hot water

Hot water will be generated locally with pipe work reticulation in a flow and return system to reduce the lengths of dead legs and improve efficiency.

Tempered water will be provided by a Thermostatic mixing valve to all fixtures and fittings

2.6.3 Reuse water.

Reuse water will be provided to all WCs for flushing from the exiting site collection tanks and pumping distribution system.

2.6.4 Natural gas

Natural gas will be supplied from a connection to the existing site wide reticulated infrastructure. Isolation valves will be provided to allow periodic or emergency maintenance without disruption to the wider network.

Natural gas will be supplied to the hot water generators only in a low pressure arrangement

2.6.5 Sanitary drainage

The sanitary drainage system will connect to the existing site wide reticulated network. Manholes and inspection openings will be strategically located to allow periodic or emergency maintenance of the system.

2.6.6 Gutters and Down pipes

The roof gutters will collect rain water and transfer via down pipes to the existing site wide rainwater reuse system.

2.7 Reception Alterations Hydraulic Design – Building N2

2.7.1 Cold water

Cold water will be supplied from a connection to the existing site wide reticulated infrastructure. Isolation valves will be provided to allow periodic or emergency maintenance without disruption to the wider network. Cold water will be supplied to the fixtures fittings and localized hot water units

2.7.2 Hot water

Hot water will be generated locally with pipe work reticulation in a flow and return system to reduce the lengths of dead legs and improve efficiency.

Tempered water will be provided by a Thermostatic mixing valve to all fixtures and fittings

2.7.3 Reuse water.

Reuse water will be provided to all WCs for flushing from the exiting site collection tanks and pumping distribution system.

2.7.4 Natural gas

Natural gas will be supplied from a connection to the existing site wide reticulated infrastructure. Isolation valves will be provided to allow periodic or emergency maintenance without disruption to the wider network.

Natural gas will be supplied to the hot water generators only in a low pressure arrangement

2.7.5 Sanitary drainage

The sanitary drainage system will connect to the existing site wide reticulated network. Manholes and inspection openings will be strategically located to allow periodic or emergency maintenance of the system.

2.7.6 Gutters and Down pipes

The roof gutters will collect rain water and transfer via down pipes to the existing site wide rainwater reuse system.

2.8 Clinic Expansion Hydraulic Design – Building N3

2.8.1 Cold water

Cold water will be supplied from a connection to the existing site wide reticulated infrastructure. Isolation valves will be provided to allow periodic or emergency maintenance without disruption to the wider network. Cold water will be supplied to the fixtures fittings and localized hot water units

2.8.2 Hot water

Hot water will be generated locally with pipe work reticulation in a flow and return system to reduce the lengths of dead legs and improve efficiency. Tempered water will be provided by a Thermostatic mixing valve to all fixtures and fittings

2.8.3 Reuse water.

Reuse water will be provided to all WCs for flushing from the exiting site collection tanks and pumping distribution system.

2.8.4 Natural gas

Natural gas will be supplied from a connection to the existing site wide reticulated infrastructure. Isolation valves will be provided to allow periodic or emergency maintenance without disruption to the wider network. Natural gas will be supplied to the hot water generators only in a low pressure arrangement

2.8.5 Sanitary drainage

The sanitary drainage system will connect to the existing site wide reticulated network. Manholes and inspection openings will be strategically located to allow periodic or emergency maintenance of the system.

2.8.6 Gutters and Down pipes

The roof gutters will collect rain water and transfer via down pipes to the existing site wide rainwater reuse system.

2.9 Maximum Security Accommodation Hydraulic Design – Building Y

2.9.1 Cold water

Cold water will be supplied from a connection to the existing site wide reticulated infrastructure located south of building C. Isolation valves will be provided to allow periodic or emergency maintenance without disruption to the wider network. Cold water will be supplied to the fixtures fittings and localized hot water units

2.9.2 Hot water

Hot water will be generated locally with pipe work reticulation in a flow and return system to reduce the lengths of dead legs and improve efficiency. Tempered water will be provided by a centralized Thermostatic mixing valve set to 42 degree to all fixtures and fittings.

2.9.3 Reuse water.

Reuse water will be provided to all WCs for flushing from the new 60,000L collection tanks and pumping distribution system.

2.9.4 Natural gas

Natural gas will be supplied from a connection to the existing site wide reticulated infrastructure located south of building C. Isolation valves will be provided to allow periodic or emergency maintenance without disruption to the wider network. Natural gas will be supplied to the hot water generators only in a low pressure arrangement

2.9.5 Sanitary drainage

The 225mm sanitary drainage system will connect to the existing 225mm network located north of building A. Manholes and inspection openings will be strategically located to allow periodic or emergency maintenance of the system.

2.9.6 Gutters and Down pipes

The roof gutters will collect rain water and transfer via down pipes to the new rainwater reuse system.

2.10 Satellite Clinic & Programs Security Hydraulic Design – Building Z

2.10.1 Cold water

Cold water will be supplied from a connection to the existing site wide reticulated infrastructure. Isolation valves will be provided to allow periodic or emergency maintenance without disruption to the wider network. Cold water will be supplied to the fixtures fittings and localized hot water units

2.10.2 Hot water

Hot water will be generated locally with pipe work reticulation in a flow and return system to reduce the lengths of dead legs and improve efficiency. Tempered water will be provided by a Thermostatic mixing valve to all fixtures and fittings

2.10.3 Reuse water.

Reuse water will be provided to all WCs for flushing from the exiting site collection tanks and pumping distribution system.

2.10.4 Natural gas

Natural gas will be supplied from a connection to the existing site wide reticulated infrastructure. Isolation valves will be provided to allow periodic or emergency maintenance without disruption to the wider network. Natural gas will be supplied to the hot water generators only in a low pressure arrangement

2.10.5 Sanitary drainage

The sanitary drainage system will connect to the existing site wide reticulated network. Manholes and inspection openings will be strategically located to allow periodic or emergency maintenance of the system.

2.10.6 Gutters and Down pipes

The roof gutters will collect rain water and transfer via down pipes to the existing site wide rainwater reuse system.

3 Building Specific Hydraulic Design – Stage 2

3.1 Minimum Security Entry & Visits Hydraulic Design – Building 01

3.1.1 Cold water

Cold water will be supplied from a connection to the existing 150mm water located to the east of the proposed site. Ring main to site O and Isolation valves will be provided to allow periodic or emergency maintenance without disruption to the wider network.

Cold water will be supplied to the fixtures, fittings and localized hot water units

3.1.2 Hot water

Hot water will be generated locally with pipe work reticulation in a flow and return system to reduce the lengths of dead legs and improve efficiency.

Tempered water will be provided by a Thermostatic mixing valve to all fixtures and fittings

3.1.3 Reuse water.

Reuse water will be provided to all WCs for flushing from the new 100,000L collection tanks filtration and pumping distribution system.

3.1.4 Natural gas

Natural gas will be supplied from a connection to the existing 100mm gas reticulated infrastructure. Isolation ring main to site O, valves will be provided to allow periodic or emergency maintenance without disruption to the wider network.

Natural gas will be supplied to the hot water generators only in a low pressure arrangement.

3.1.5 Sanitary drainage

The sanitary drainage system will connect to the existing sewer 225 mm located to the east of the proposed site. Manholes and inspection openings will be strategically located to allow periodic or emergency maintenance of the system.

3.1.6 Gutters and Down pipes

The roof gutters will collect rain water and transfer via down pipes to the new rainwater storage tank to be used for rain water harvest system.

3.2 Minimum Security Programs Hydraulic Design Building O2

3.2.1 Cold water

Cold water will be supplied from a connection to the existing 150mm water located to the east of the proposed site. Ring main to site O and Isolation valves will be provided to allow periodic or emergency maintenance without disruption to the wider network.

Cold water will be supplied to the fixtures, fittings and localized hot water units

3.2.2 Hot water

Hot water will be generated locally with pipe work reticulation in a flow and return system to reduce the lengths of dead legs and improve efficiency.

Tempered water will be provided by a centralized Thermostatic mixing valve set to 42 degree to all fixtures and fittings.

3.2.3 Reuse water.

Reuse water will be provided to all WCs for flushing from the new 100,000L collection tanks filtration and pumping distribution system.

3.2.4 Natural gas

Natural gas will be supplied from a connection to the existing 100mm gas reticulated infrastructure. Isolation ring main to site O, valves will be provided to allow periodic or emergency maintenance without disruption to the wider network.

Natural gas will be supplied to the hot water generators only in a low pressure arrangement.

3.2.5 Sanitary drainage

The sanitary drainage system will connect to the existing sewer 225 mm located to the east of the proposed site. Manholes and inspection openings will be strategically located to allow periodic or emergency maintenance of the system.

3.2.6 Gutters and Down pipes

The roof gutters will collect rain water and transfer via down pipes to the new rainwater storage tank to be used for rain water harvest system.

3.3 Minimum Security Hydraulic Design – Building O5, O6, O7 and O8

3.3.1 Cold water

Cold water will be supplied from a connection to the existing 150mm water located to the east of the proposed site. Ring main to site O and Isolation valves will be provided to allow periodic or emergency maintenance without disruption to the wider network.

Cold water will be supplied to the fixtures, fittings and localized hot water units

3.3.2 Hot water

Hot water will be generated locally with pipe work reticulation in a flow and return system to reduce the lengths of dead legs and improve efficiency.

Tempered water will be provided by a Thermostatic mixing valve to all fixtures and fittings

3.3.3 Reuse water.

Reuse water will be provided to all WCs for flushing from the new 100,000L collection tanks filtration and pumping distribution system.

3.3.4 Natural gas

Natural gas will be supplied from a connection to the existing 100mm gas reticulated infrastructure. Isolation ring main to site O, valves will be provided to allow periodic or emergency maintenance without disruption to the wider network.

Natural gas will be supplied to the hot water generators only in a low pressure arrangement.

3.3.5 Sanitary drainage

The sanitary drainage system will connect to the existing sewer 225 mm located to the east of the proposed site. Manholes and inspection openings will be strategically located to allow periodic or emergency maintenance of the system.

3.3.6 Gutters and Down pipes

The roof gutters will collect rain water and transfer via down pipes to the new rainwater storage tank to be used for rain water harvest system.

3.4 Carpark Hydraulic Design –

3.4.1 Cold water

Not required

3.4.2 Hot water

Not required

3.4.3 Reuse water.

Reuse water will be provided to all hose taps for flushing from the exiting site collection tanks and pumping distribution system.

3.4.4 Natural gas

Not required

3.4.5 Sanitary drainage

Not required

3.4.6 Carpark drainage

Refer civil works

3.5 Staff Amenities Hydraulic Design – Building R

3.5.1 Cold water

Cold water will be supplied from a connection to the exiting 50mm located at the east of building Q. Isolation valves will be provided to allow periodic or emergency maintenance without disruption to the wider network. Cold water will be supplied to the fixtures, fittings and localized hot water units

3.5.2 Hot water

Hot water will be generated locally with pipe work reticulation in a flow and return system to reduce the lengths of dead legs and improve efficiency. Tempered water will be provided by a Thermostatic mixing valve to all fixtures and fittings

3.5.3 Reuse water.

Reuse water will be provided to all WCs for flushing from the new 5000 L collection tanks located at the north sit of the building rain water reuse system will include filtration and pumping distribution system.

3.5.4 Natural gas

Natural gas will be supplied from a connection to the exiting 50mm located at the east of building Q. Isolation valves will be provided to allow periodic or emergency maintenance without disruption to the wider network. Natural gas will be supplied to the hot water generators only in a low pressure arrangement

3.5.5 Sanitary drainage

The sanitary drainage system will connect to the exiting 225 mm located at the east of building Q. Manholes and inspection openings will be strategically located to allow periodic or emergency maintenance of the system.

3.5.6 Gutters and Down pipes

The roof gutters will collect rain water and transfer via down pipes to the new rainwater storage tank to be used for rain water harvest system.

3.6 Medium Security Accommodation Hydraulic Design – Buildings W1& W2

3.6.1 Cold water

Not required

3.6.2 Hot water

Not required

3.6.3 Reuse water.

Not required

3.6.4 Natural gas

Not required

3.6.5 Sanitary drainage

Not required

3.6.6 Gutters and Down pipes

Not required

3.7 Medium Security Programs RoomHydraulic Design – Buildings W+

3.7.1 Cold water

Cold water will be supplied from existing reticulation to the building. Isolation valves will be provided to allow periodic or emergency maintenance without disruption to the wider network. Cold water will be supplied to the fixtures fittings and localized hot water units

3.7.2 Hot water

Hot water will be generated locally with pipe work reticulation in a flow and return system to reduce the lengths of dead legs and improve efficiency. Tempered water will be provided by a Thermostatic mixing valve to all fixtures and fittings

3.7.3 Reuse water.

Reuse water will be provided to all WCs for flushing from the exiting site collection tanks and pumping distribution system.

3.7.4 Natural gas

Natural gas will be supplied from existing reticulation to the building. Isolation valves will be provided to allow periodic or emergency maintenance without disruption to the wider network.

Natural gas will be supplied to the hot water generators only in a low pressure arrangement

3.7.5 Sanitary drainage

The sanitary drainage system will connect to the existing site wide reticulated network. Manholes and inspection openings will be strategically located to allow periodic or emergency maintenance of the system.

3.7.6 Gutters and Down pipes

The roof gutters will collect rain water and transfer via down pipes to the existing site wide rainwater reuse system.

3.8 Recreation Security Programs Room Hydraulic Design – Buildings K1

3.8.1 Cold water

Cold water will be supplied from a connection to the existing site wide reticulated infrastructure. Isolation valves will be provided to allow periodic or emergency maintenance without disruption to the wider network.

Cold water will be supplied to the fixtures fittings and localized hot water units

3.8.2 Hot water

Hot water will be generated locally with pipe work reticulation in a flow and return system to reduce the lengths of dead legs and improve efficiency.

Tempered water will be provided by a Thermostatic mixing valve to all fixtures and fittings

3.8.3 Reuse water.

Not required

3.8.4 Natural gas

Natural gas will be supplied from a connection to the existing site wide reticulated infrastructure. Isolation valves will be provided to allow periodic or emergency maintenance without disruption to the wider network.

Natural gas will be supplied to the hot water generators only in a low pressure arrangement

3.8.5 Sanitary drainage

The sanitary drainage system will connect to the existing site wide reticulated network. Manholes and inspection openings will be strategically located to allow periodic or emergency maintenance of the system.

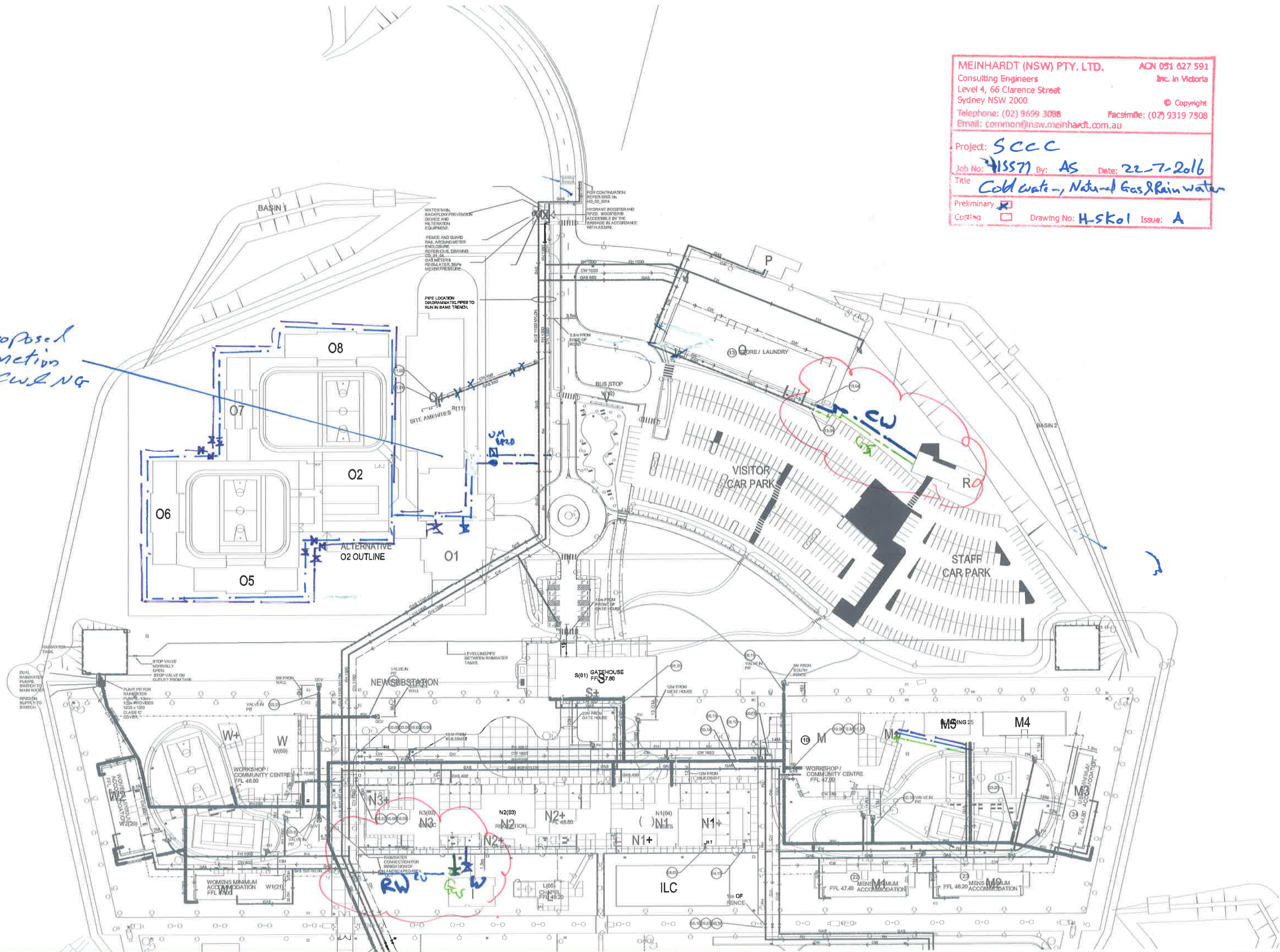
3.8.6 Gutters and Down pipes

The roof gutters will collect rain water and transfer via down pipes to the existing site wide rainwater reuse system.

MEINHARDT (NSW) PTY. LTD. AON 031 627 591
 Consulting Engineers Inc. in Victoria
 Level 4, 66 Clarence Street
 Sydney NSW 2000
 Telephone: (02) 9659 3088 Copyright
 Facsimile: (02) 9319 7508
 Email: common@nsw.meinhardt.com.au

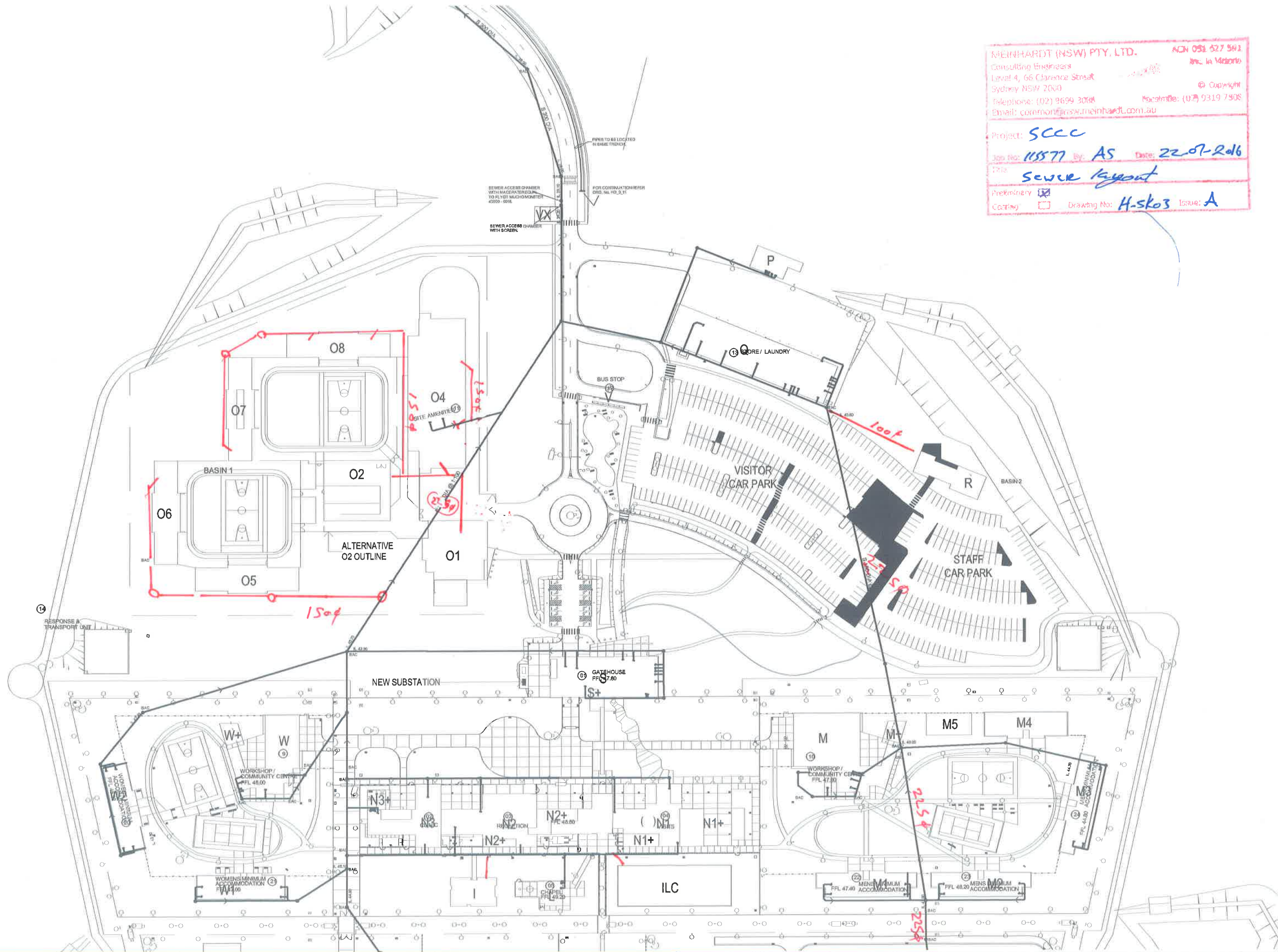
Project: **SCCC**
 Job No: **415571** By: **AS** Date: **22-7-2016**
 Title: **Cold water, Natural Gas & Rain water**
 Preliminary ☒
 Drawing No: **H-5K01** Issue: **A**

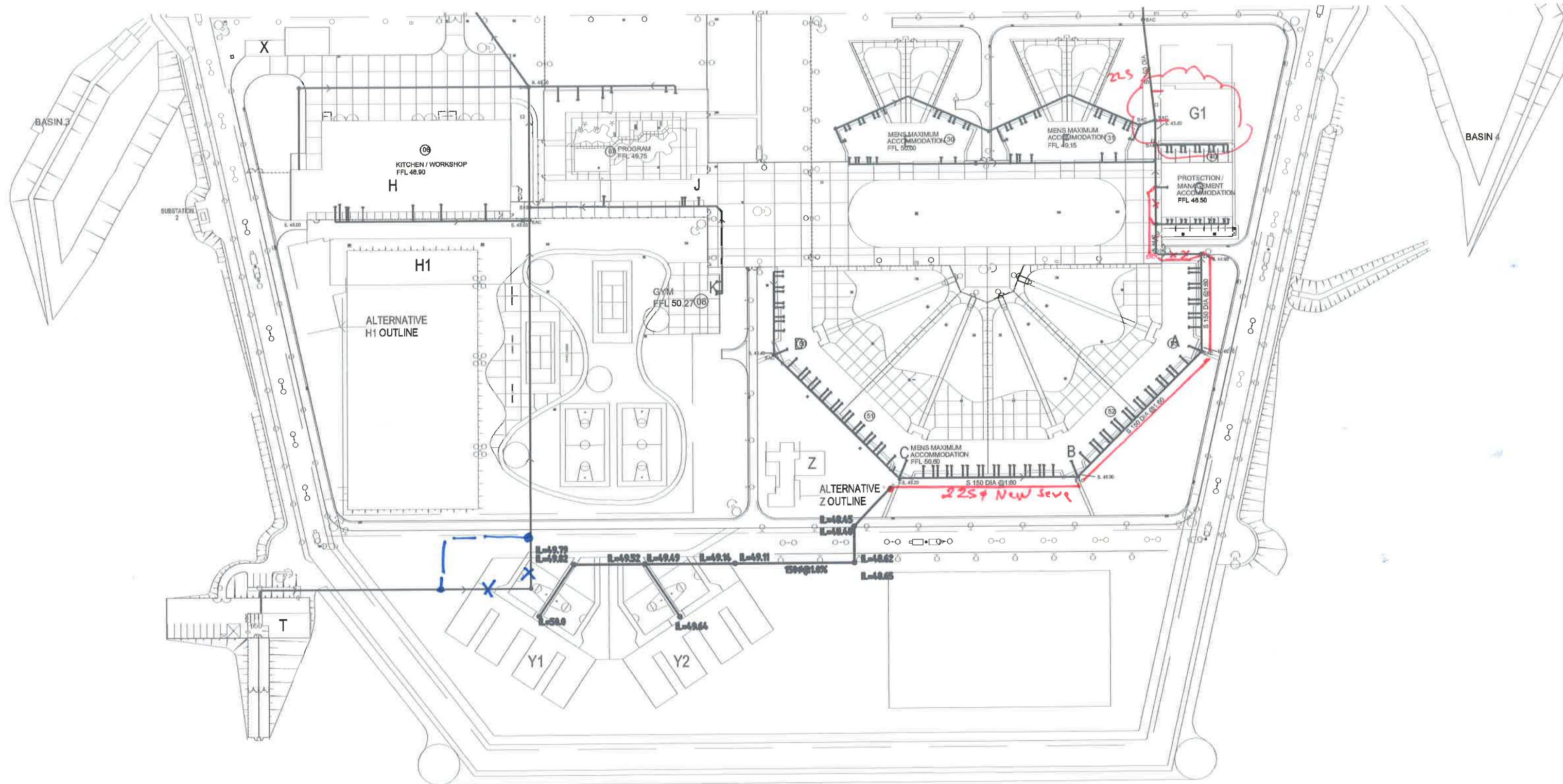
*Proposed
 connection
 to CW & NG
 to*



MEINHARDT (NSW) PTY. LTD. ACH 051 527 581
Consulting Engineers Inc. in Victoria
Level 4, 66 Clarence Street
Sydney NSW 2000 © Copyright
Telephone: (02) 9699 3088 Facsimile: (02) 9319 7908
Email: coremont@nsw.meinhardt.com.au

Project: **SCCC**
Job No: **115577** By: **AS** Date: **22-07-2016**
Title: **sewer layout**
Preliminary ☒
Conting ☐ Drawing No: **H-sk03** Issue: **A**





MEINHARDT (NSW) PTY. LTD.		ACN 051 627 591
Consulting Engineers		Inc. in Victoria
Level 4, 66 Clarence Street		
Sydney NSW 2000		© Copyright
Telephone: (02) 9699 3088		Facsimile: (02) 9319 7908
Email: common@nsw.meinhardt.com.au		
Project: <i>SCCC</i>		
Job No: <i>115177</i>	By: <i>AS</i>	Date: <i>22-7-2016</i>
Title: <i>Sever layout</i>		
Preliminary <input checked="" type="checkbox"/>		
Coating <input type="checkbox"/>	Drawing No: <i>H-404</i>	Issue: <i>A</i>