

NSW
GOVERNMENT

Justice



NSW
GOVERNMENT

Public Works

SYDNEY REGION
Level 5, 2 BURBANK PLACE, BAULKHAM HILLS NSW 2153
A division of the Department of Finance and Services.

STRUCTURAL, CIVIL + HYDRAULIC WOOLACOTTS CONSULTING ENGINEERS T: 02 8241 990 F: 02 8241 9999
ELECTRICAL JHA CONSULTING T: 02 9437 1000
MECHANICAL + ESD ERBAS & ASSOCIATES T: 02 9437 1022
COMMS, SECURITY, DATA + IT IPP CONSULTING T: 02 8272 7200 F: 02 8272 7272

LANDSCAPE LOWE WARRINGTON PTY LTD T: 02 9555 1147 F: 02 9555 1146
FIRE EXOVA WARRINGTONFIRE AUS T: 02 8270 7804
BCA + DDA du CHATEAU CHUN T: 03 9081 1688
ACCUSTIC DAY DESIGN T: 02 9046 3874

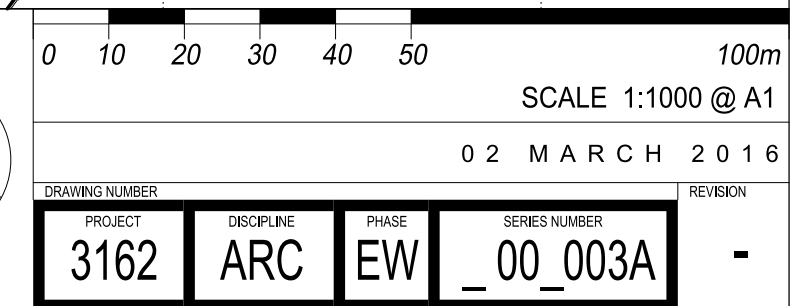
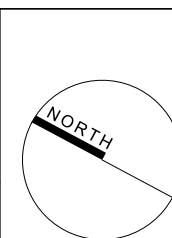
PERUMAL PEDAVOLI ARCHITECTS
T: +61 2 9291 0000
WEB: www.pp-a.com.au
Nominated Architect:
Vince Pedavoli NSW reg No. 5045

PERUMAL
PEDAVOLI

ARCHITECTS

**PARKLEA CORRECTIONAL
CENTRE EXPANSION**
66 SENTRY DRIVE, PARKLEA NSW

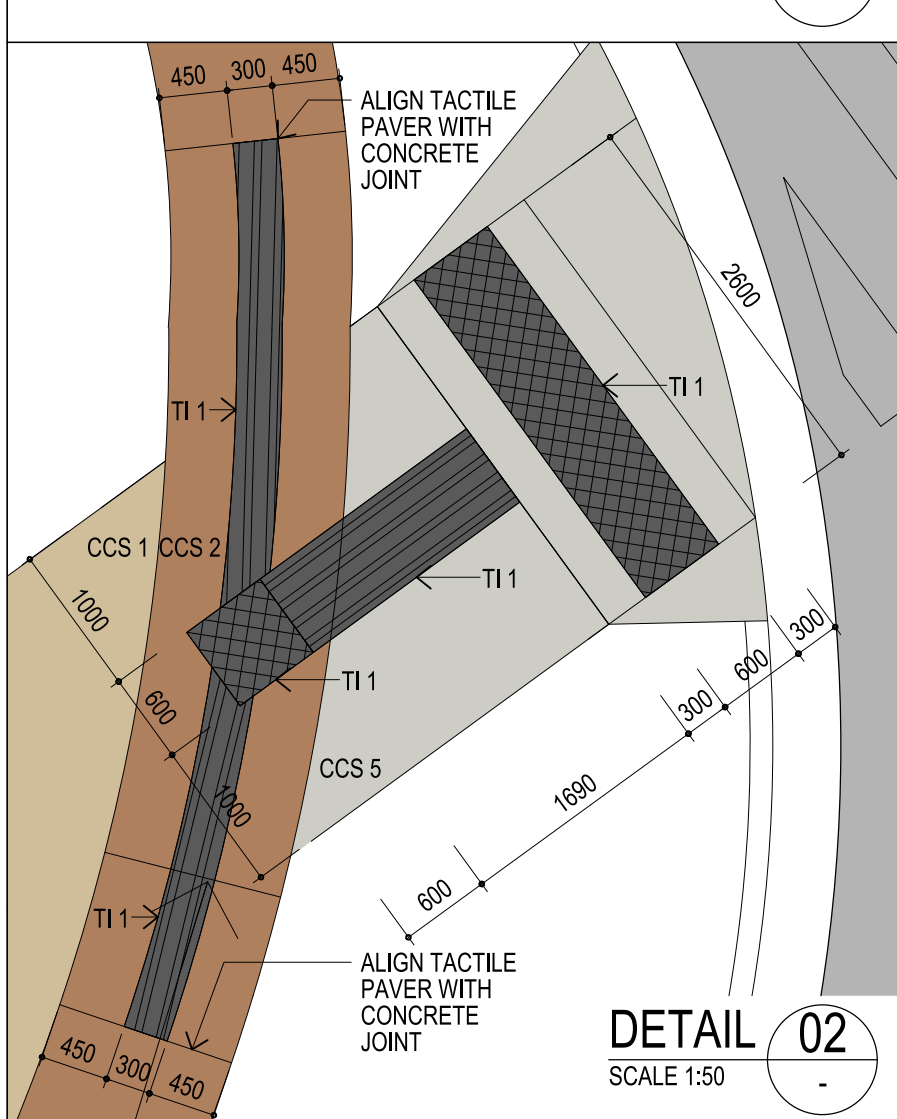
**EARLY WORKS - PHASE A
SITE PLAN**



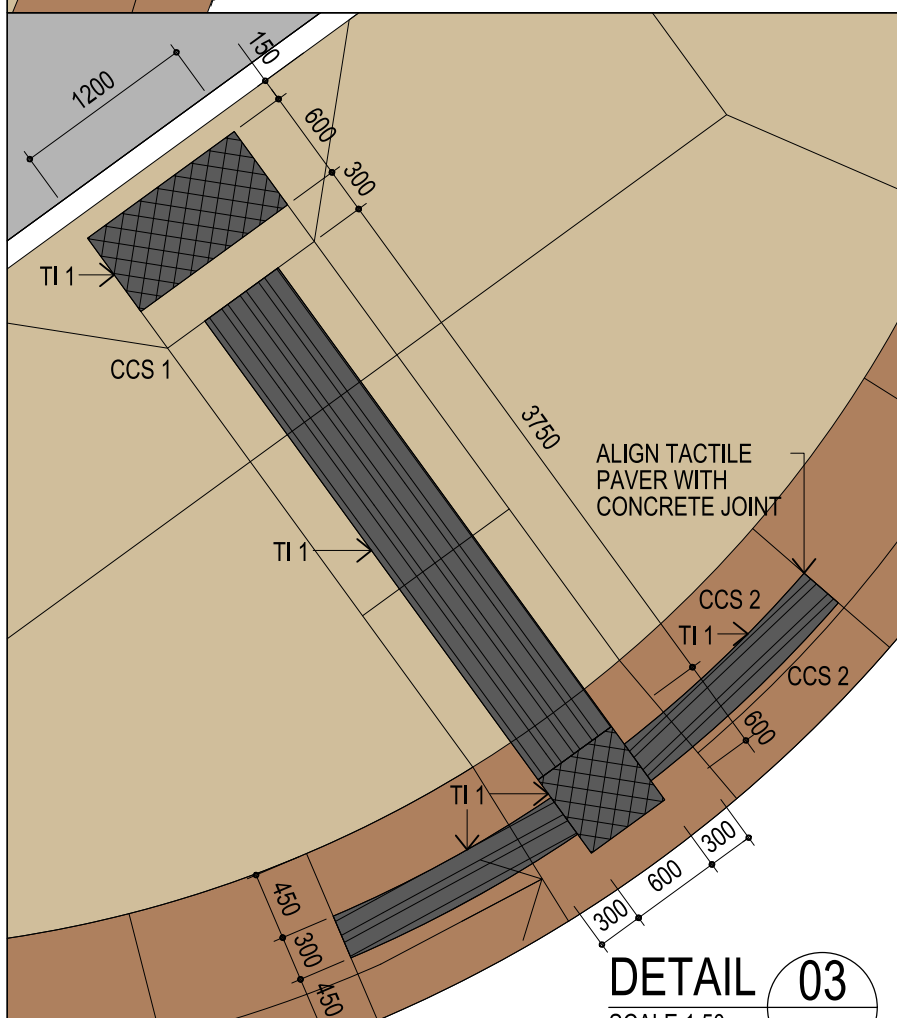
TACTILE GROUND SURFACE INDICATORS



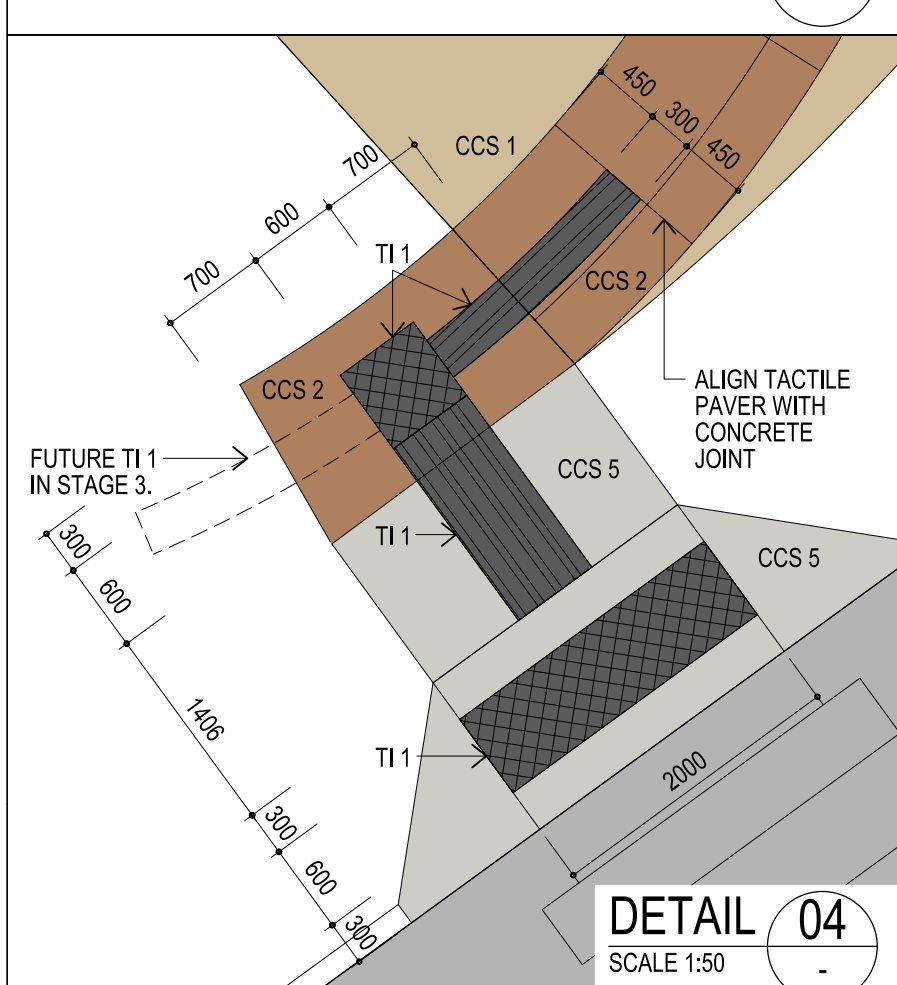
DETAIL 01
SCALE 1:50



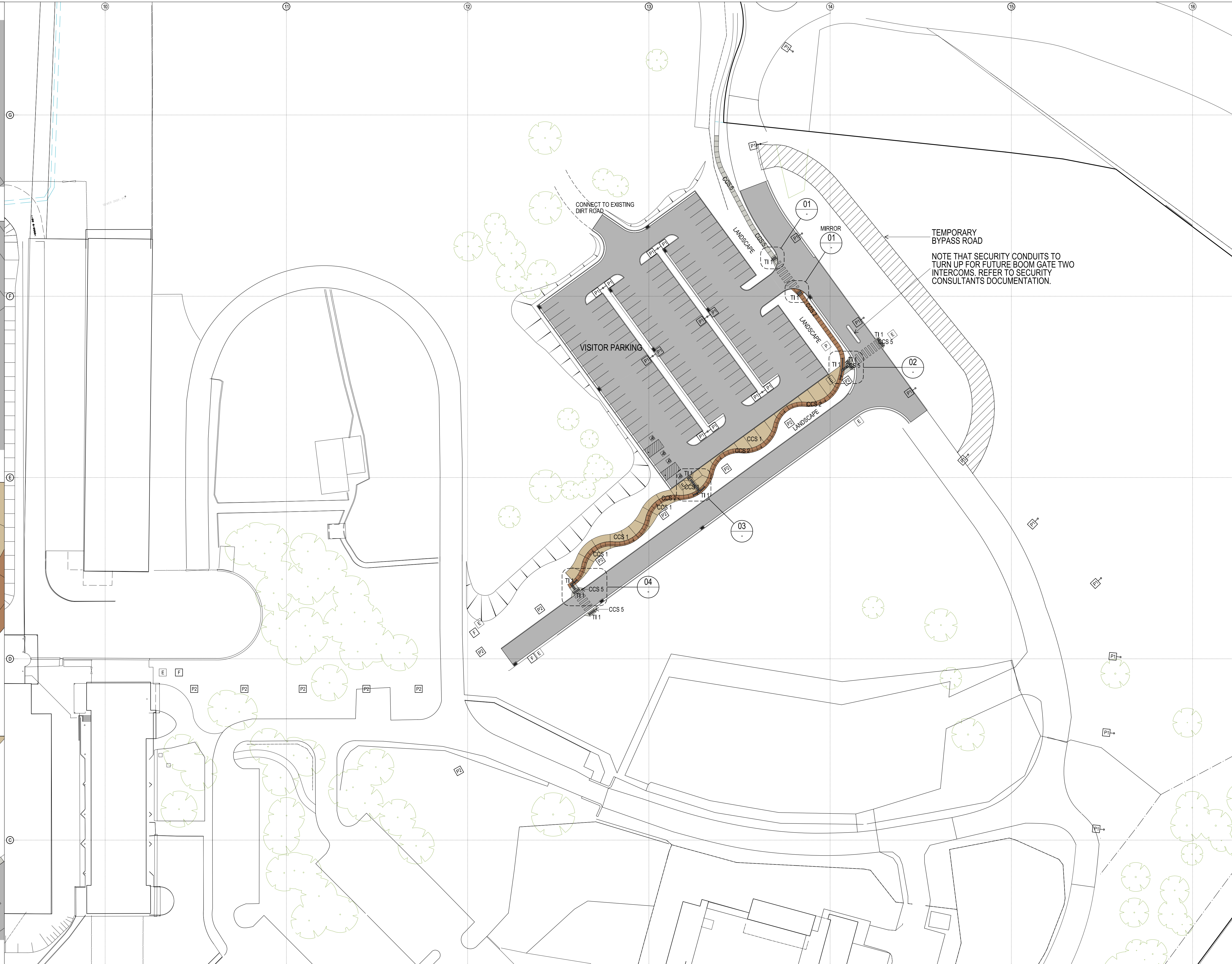
DETAIL 02
SCALE 1:50

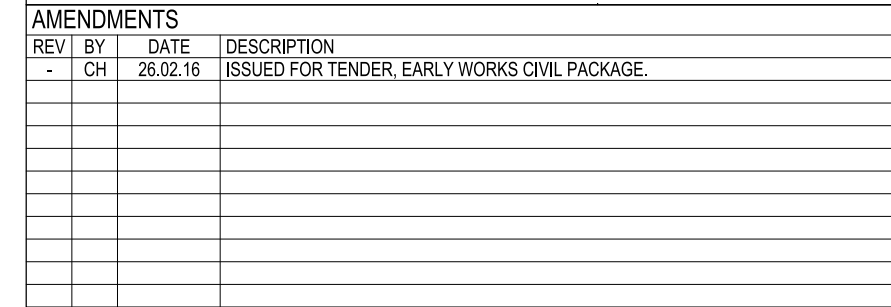


DETAIL 03
SCALE 1:50



DETAIL 04
SCALE 1:50

[illegible][illegible]



NSW
GOVERNMENT | **Public Works**

SYDNEY REGION
Level 5, 2 BURBANK PLACE, BAULKHAM HILLS NSW 2153
A division of the Department of Finance and Services.

STRUCTURAL, CIVIL + HYDRAULIC WOOLACOTTS CONSULTING ENGINEERS T: 02 8241 990 F: 02 8241 9999
ELECTRICAL JHA CONSULTING T: 02 9437 1000
MECHANICAL + ESD ERBAS & ASSOCIATES T: 02 9437 1022
COMMS, SECURITY, DATA + IT IPP CONSULTING T: 02 8272 7200 F: 02 8272 7272

LANDSCAPE LORNA HARRISON PTY LTD T: 02 9555 1147 F: 02 9555 1146
FIRE EXOVA WARRINGTONFIRE AUS T: 02 8270 7604
BCA + DOA du CHATEAU CHUN T: 03 9081 1688
ACOUSTIC DAY DESIGN T: 02 9046 3874

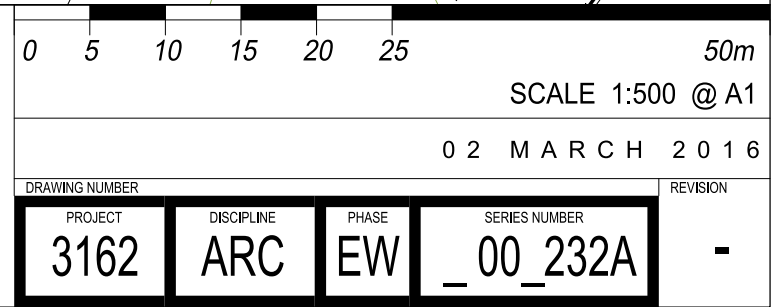
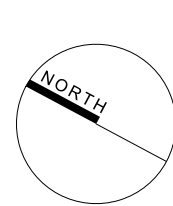
PERUMAL PEDAVOLI ARCHITECTS
T: +61 2 9291 0000
WEB: www.pp-a.com.au
Nominated Architect:
Vince Pedavoli NSW reg No. 5045

PERUMAL
PEDAVOLI

ARCHITECTS

**PARKLEA CORRECTIONAL
CENTRE EXPANSION**
66 SENTRY DRIVE, PARKLEA NSW

SITE PLAN
EARLY WORKS PHASE A STAGE 2
SOUTH EAST DEMOLITION PLAN



PLOTFILE DATE: 2/03/2016 PLOTFILE TIME: 12:31:51 PM

AMENDMENTS			
REV	BY	DATE	DESCRIPTION
-	CH	26.02.16	ISSUED FOR TENDER, EARLY WORKS CIVIL PACKAGE.



STRUCTURAL, CIVIL + HYDRAULIC
WOOLACOTTS CONSULTING ENGINEERS
T: 02 8241 990 F: 02 8241 9999

ELECTRICAL
JHA CONSULTING
T: 02 9437 1000

MECHANICAL + E
ERBAS & ASSOCI
T: 02 9437 1022

COMMS, SECURITY, DATA + IT
IPP CONSULTING
T: 02 8272 7200 F: 02 8272 7272

LANDSCAPE
LORNA HARRISON PTY LTD
T: 02 9555 1147 F: 02 9555 1146

FIRE
EXOVA WARRINGTON FIRE A
T: 02 8270 7804

BCA + DOA
du CHATEAU CHUN
T: 03 90 81 16 88

ACOUSTIC
DAY DESIGN
T: 02 9046 3874

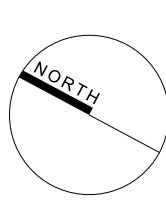
PERUMAL PEDAVOLI ARCHITECTS
T: +61 2 9291 0000
WEB: www.pp-a.com.au
Nominated Architect:
Vince Pedavoli NSW reg No. 5045

PERUMAL
PEDAVOLI

ARCHITECTS

PARKLEA CORRECTIONAL
CENTRE EXPANSION
66 SENTRY DRIVE, PARKLEA NSW

SITE PLAN
EARLY WORKS PHASE A STAGE 1
SOUTH EAST DEMOLITION PLAN



0 5 10 15 20 25 50m
SCALE 1:500 @ A1

02 MARCH 2016

DRAWING NUMBER				REVISION
PROJECT	DISCIPLINE	PHASE	SERIES NUMBER	
3162	ARC	EW	_00_231A	-